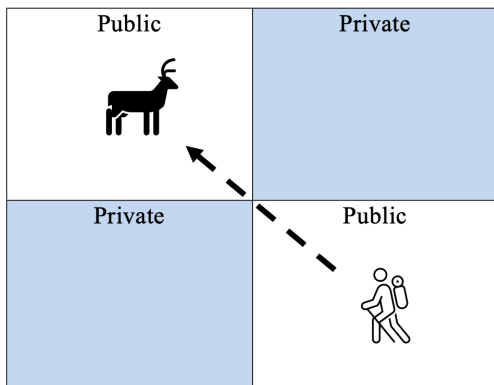


# SB 1545

## IMPROVES & CLARIFIES PUBLIC LANDS ACCESS WHILE PROTECTING PRIVATE LANDOWNERS



### What is 'corner crossing'?

To cross on foot from one parcel of public land to another parcel of public land by stepping across the corner where two parcels of public land and one or more parcel of privately owned land meet.

---

### 53% of Oregon is public land - over 32 million acres.

Many of those acres are interwoven with private land in a 'checkerboard' pattern, making access difficult or, in some cases, impossible without the ability to corner cross between public land parcels.

The absence of clear statutory guidance has not served landowners, sportsmen, or law enforcement well, often leaving all parties to operate in a legal gray area.

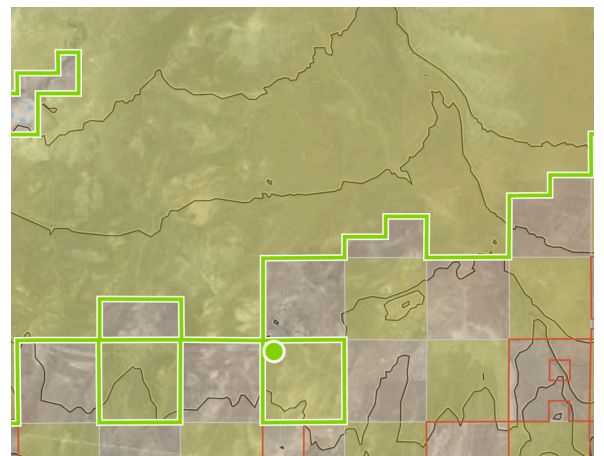
SB 1545 provides this much needed clarity to protect members of the public who corner cross to access public lands from allegations of trespass while also protecting landowners from allegations of negligence and potential lawsuits.

The bill protects private property by preserving remedies for damage and unreasonable interference, while also ensuring that lawful access to public land is not treated as a criminal act.

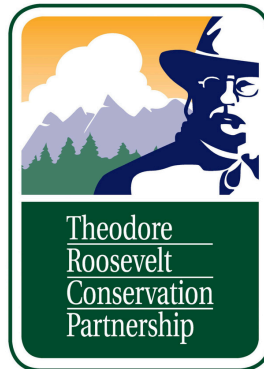
---

## WE URGE YOUR SUPPORT FOR SB 1545

- Bipartisan, bicameral support
- Protects public land users from criminal trespass allegations
- Protects private landowners from allegations of negligence and potential lawsuits
- Does not require new programs, funding, or enforcement infrastructure - does not impose costs on landowners or the state
- Broadly supported by the conservation, outdoor, and recreational communities.



# SB 1545 SUPPORTERS



OREGON ASSOCIATION



OF SHOOTING RANGES



Contact Amy Patrick - [DriftCreekConsulting@gmail.com](mailto:DriftCreekConsulting@gmail.com)