

**Testimony – Donna Cohen – HB 2025 – June 12, 2025.**  
**Joint Committee on Transportation**

I have been a resident of the St Johns neighborhood of Portland for almost 22 years.

A natural disaster IS coming to my area and it is one that *will* cause a life and death threat for 20,000 residents and workers on the north peninsula of Portland, which includes the Port of Portland. This disaster will be compounded because the state has made vulnerable the north peninsula due to storing 90% of the fuel for the whole state at the CEI Hub less than a mile away! After the earthquake, if a toxic cloud comes, we will have no route from which to escape. Plus, we will be completely cut off, possibly for months – no ingress to procure food, or to receive medical help or unite families. You will see this reality from the maps I have provided in my written testimony.

We are asking for \$5 million so that the city of Portland can do the design work necessary to then apply for federal monies to rebuild one of the four bridges that **WILL** collapse, as determined by PBOT, on what is *supposed to be* an emergency route. It will take years before we realize an actual seismically resilient bridge even after we obtain these funds. With a 1 in 3 chance of a major quake in the next 35 years, it behooves us to start as soon as possible, the process of securing this emergency route.

IF WE DO NOT MITIGATE THE DANGER, OREGON WILL FACE A SITUATION THAT WILL DWARF THAT OF THE HORRORS OF THE SUPERDOME AFTER KATRINA. We must have an emergency route! Please amend the transportation bill to do so. Thank you.

- Families will be separated
- No emergency vehicles in/out
- No medical help
- No food resupply
- No repair trucks
- In the worst-case scenario, if a toxic cloud comes from the CEI Hub -WE WILL BE TRAPPED!
- This is a STATE issue and an issue of environmental justice. We live under the threat of the CEI Hub, which holds 90% of the fuel for the whole state of Oregon! If we are going to be under that threat the least the state can do is provide us an emergency route out for when it explodes!
- Any city in Oregon under the threat we are under deserves an emergency route.

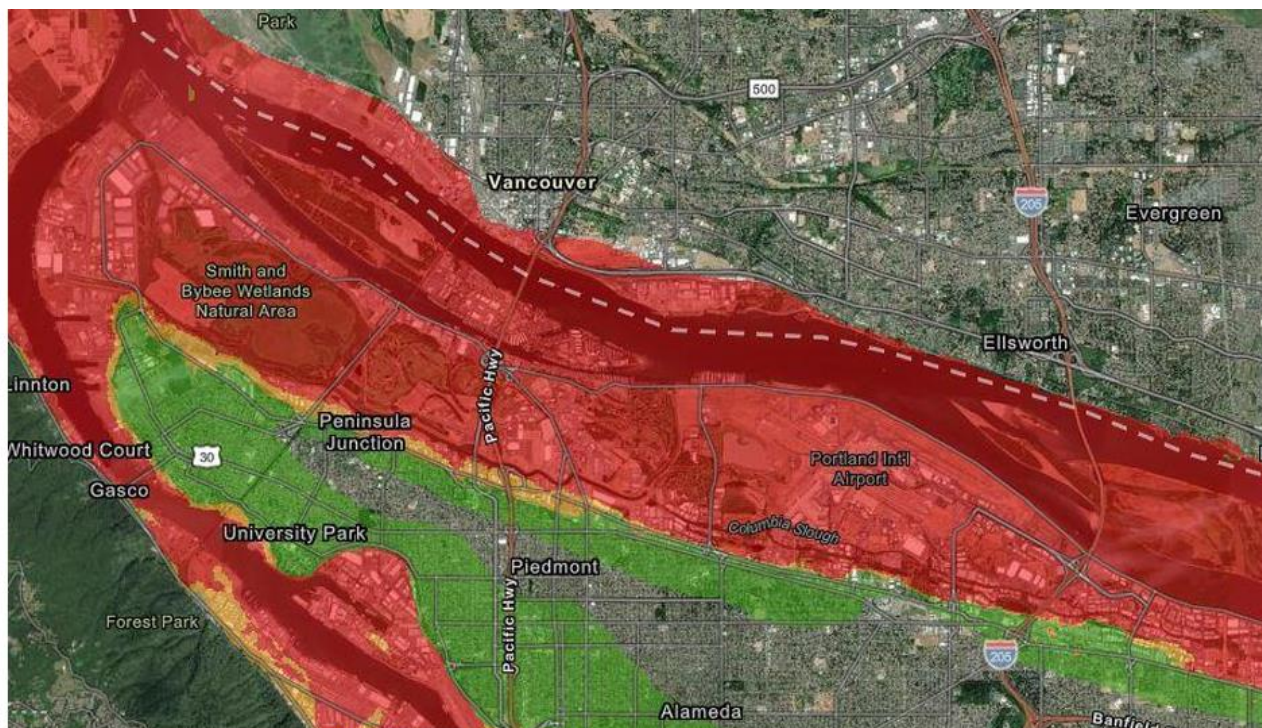
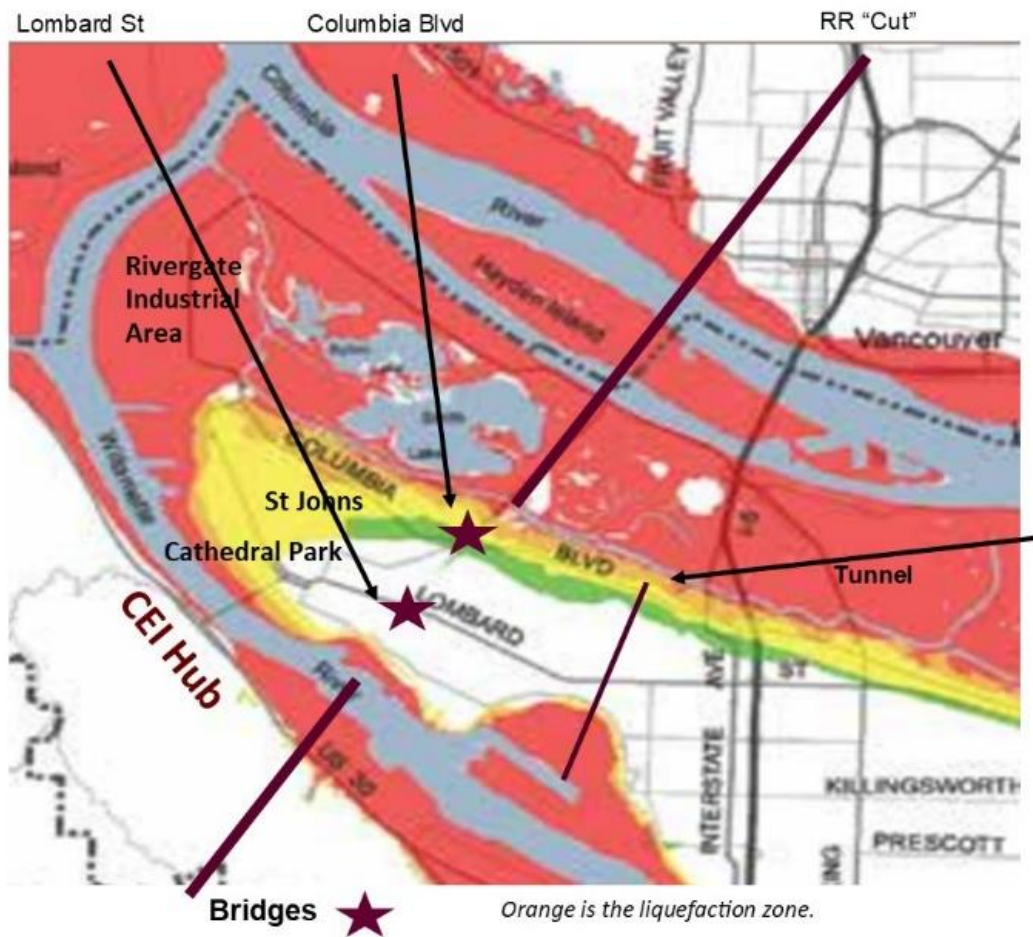


Figure 196 - Map showing soil liquefaction risk at the Port of Portland's critical community assets. Areas in red, which include the Portland International Airport and Terminal 6, have high risk of soil liquefaction. Map from DOGAMI