

120 Smith Street  
PO Box 378  
Harrisburg, OR 97446



(541) 995-6655  
FAX: (541) 995-9244  
TDD: (800) 753-2900

*"2002 Award of Excellence"*

*"2006 All-America City Finalist"*

[www.ci.harrisburg.or.us](http://www.ci.harrisburg.or.us)

May 9, 2025

Honorable Chairs and Members of the Joint Ways and Means Committee.

Harrisburg, located in the heart of the Willamette Valley, on the banks of the Willamette River, has a beautiful gem of a park located just south of the City. Our newest park, which we've aptly named Eagle Park, is 132 acres. This former gravel mine has gone through reclamation, and has 3 large ponds, one of which has joined with the Willamette River.

This beautiful area of town is home to riparian forest, wetlands, wonderful views of the Willamette River, open space and an incredible variety of flora and fauna! The City is working hard to develop the park, but at a slow pace, due to the high cost of development. The upper park, 31.2 acres, was annexed into the City. The lower portion has undergone a conditional use permit and greenway development permit with Linn County to operate as a park. A wetland delineation has been made and filed, and the cultural survey has been completed.

Due to the size, and the location of this park, we believe it's a regional gem. We plan on this being a location that will attract tourism to our area. Sporting a dog park that is almost an acre, there is both a big dog, and a little dog side, and plenty of room to allow for playing and running. There are .32 miles of trails in the upper park, which just received it's first coat of wood chips, and gravel for the ADA pathway. The ADA pathway, and trail through riparian forest, has 3 views of the Willamette River!

In the future, a playground and outdoor physical work out area will be added, along with a pit set restroom. The City will add another 1.82 miles worth of trails in the southern part of Eagle Park. This includes another area accessible to people with disabilities, and which includes viewpoints over the ponds from benches that will be added in the future. There will also be trailheads, and parking areas. A future boat ramp, and docks will be added to the big pond, once the City works through additional regulatory requirements.

As a small City of 3,700 people, with an operating budget of \$8 million to \$9 million when not inflated by bond funds; Harrisburg doesn't have enough funds to develop the park at a faster rate. We have aggressively applied for grants, of course, but the amounts we can

afford to apply for are limited to the City due to the match requirements. It's a very slow process, and people are eager to use the facility in the way we've always planned.

The City has submitted a capital request for \$1.5 million, which will help us to reach the next phase of development. This is a highly desired boat ramp and docks in the big pond. As many people are aware, the City's boat ramp for over 50 years is no longer accessible by bigger boats, due to the presence of Harrisburg 'Beach'. (A giant gravel bar). The city obtained approval to dig out the boat ramp area, but the feasibility of the cost to maintain an erosion barrier and silt fence in the middle of the main current of the Willamette River, was too exorbitant for the City to absorb.

The proposed boat ramp will eliminate the need for the Harrisburg Fire/Rescue District to go ten miles out of its way to the nearest boat ramp in order to launch a larger rescue boat when doing river rescues. Having a viable boat ramp will also attract those recreationists who ply the Willamette River, and will certainly attract more tourists to our area. The city has just been told by DSL less than five days ago that we will need to come up with riverine mitigation to be able to add the boat ramp. This is such a new development that it's not even mentioned in the capital request that was submitted.

We need your assistance to help the City develop this portion of the park, and to add a boat ramp and docks to Eagle Park. Our request is only \$1.5 million; but the cost of the lives that could be saved by the Harrisburg Fire/Rescue District is priceless.

Thank you for your consideration.

Sincerely;



Michele Eldridge  
City Administrator



The background of the image is a close-up, blurred photograph of green grass or reeds, creating a sense of motion and nature. The text is centered within a white rectangular border.

# **HARRISBURG EAGLE PARK TRAILS PROJECT**





## HARRISBURG EAGLE PARK

- 1.84 Miles New Trails
- 2.20 Total Miles
- 3 Trailheads:
  - North Park Area
  - North End of Big Pond
  - Inter-pond Location





## Northern Eagle Park:

### 1<sup>st</sup> Phase:

Dog Park

.36 miles natural (unimproved) trails

3 river viewpoints

3 Signs

ADA/General Use Trail

1 Main River Viewpoint

ADA Accessible Picnic Areas

### RTP Improvements:

2 Trailheads in this area

### Future Phases:

Natural Field/Boulders

Play field

Playground Area

Picnic Tables

Dock

Boat Launch

Footbridge over seasonal overflow creek



## NORTH PARK AREA TRAILHEAD

- ❖ 2 Parking Spaces
- ❖ 500 sq. ft. 'landing'
- ❖ Wayfinder Sign w/legend

Leads to existing (not improved)  
.36 miles of recreational/active  
trail through forest with two  
Willamette River Side Channel  
View Point – Connects with ADA  
Trail. One interactive Historical  
Sign Planned in this section.











ADA/MULTI-PURPOSE  
PATHWAY



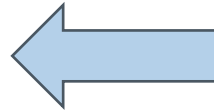


## ADA/MULTI-PURPOSE PATHWAY

ADA Pathway links with Wood Chip Recreational/Active Trail.

Includes Willamette River Viewpoint, and Big Pond Viewpoints to the side.

ADA Accessible Picnic Spots and Historical Sign in relation to Morse Bros to be in this location.





TRAILHEAD NO. 2:  
2 PARKING SPACES  
500 SQ. FT. LANDING  
WAYFINDER SIGN &  
LEGEND  
LEADS TO 5' GRAVEL  
PATH TO PONDS

FUTURE GRANT TO  
FUND PLAYGROUND,  
PLAY FIELD, DOCK, &  
BOAT LANDING







# Lower Eagle Park Area:

## RTP Grant Funds:

1.84 Miles of new Trail

Compacted Gravel in middle pond area

5 Parking Spaces

1 ADA Space

Bulletin Board/Legend/Wayfinding Signs

Woodchip Pathway on west bank of southwest pond

New River Viewpoint

Natural paths with wayfinding signs in Riparian area

ADA Viewpoints on Compacted Roadway with Park

Benches

Future Grants:

Planting Trees on west bank

ADA Accessible Dock

Footbridge over Fish Channel

Disc Golf Course



# Lower Eagle Park & Ponds

## Trailhead No. 3:

- 5 Parking Spaces
- 1 ADA Space
- Bulletin Board/Wayfinding Sign with legend

Future ADA Accessible Dock  
Location









## LOCATION OF WOOD CHIP TRAIL ON WEST BANK OF SW POND

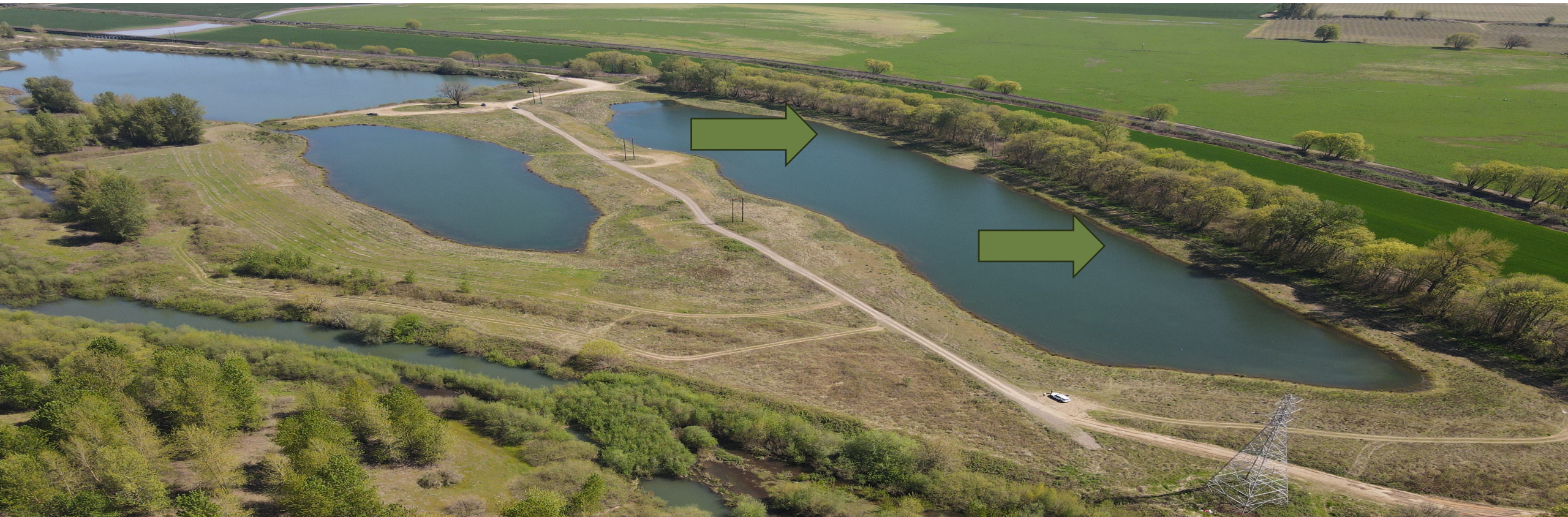


- Future Trees to be planted to replace those that have died after the reclamation process on the west bank of the sw pond.
- This trail matches up with the bottom of the Compacted Roadway/ADA Trail on the east bank of the southeast pond.
- People can also walk back on the middle driveway.



## ADA TRAIL ON COMPACTED/NATURAL ROADWAY BED

- This pathway will be graded to stay level.
- 3 benches to be added to this area for wildlife viewing
- Concrete Bollards to block transportation devices







NATURAL TRAILS  
BLAZED IN RIPARIAN  
AREAS – WAYFINDING  
SIGNS ON TREES TO  
ESTABLISH LOCATIONS  
AFTER FLOODING





THANK YOU

Michele Eldridge

541-995-2200

[meldridge@ci.harrisburg.or.us](mailto:meldridge@ci.harrisburg.or.us)

[www.ci.harrisburg.or.us](http://www.ci.harrisburg.or.us)

