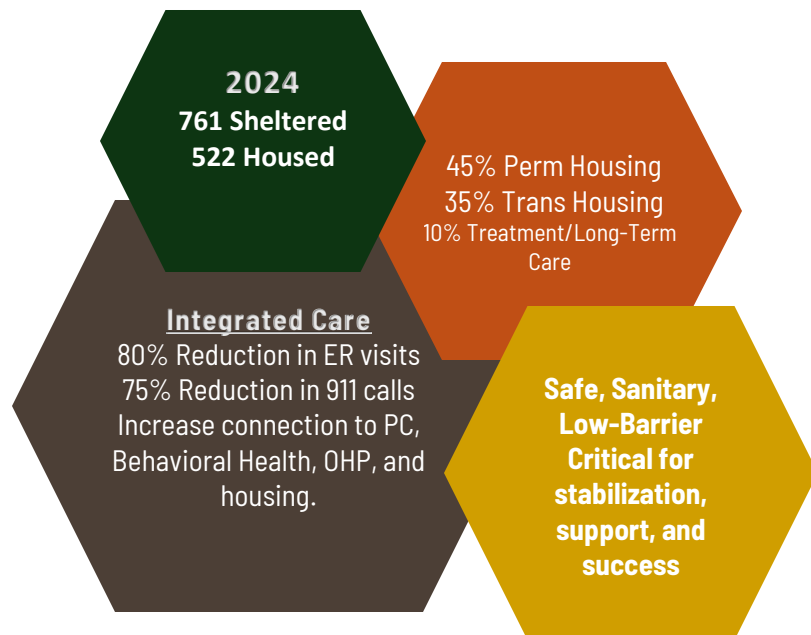


## Support HB 3644 and HB 5011

Oregon has invested in a strong shelter system over the last several years. In Marion and Polk County this investment has resulted in 322 safe, supported shelter beds. The policy proposal in HB 3644 and funding HB 5011/POP 501 continues that investment in proven models and ensures continued support for the existing shelter bed capacity.



- Funds available year after year make a lasting impact. State shelter beds should be a part of the Continued Service Level (CSL).
- Funding levels are adequate to sustain existing program operations.
- Funding that can be adapted to the unique needs in each community and enable service providers to lean on best practices for reaching the specific communities they serve.
- The shift from EO funding and Direct Contracting has been considered and extended to July 2026.



Visit [church-at-the-park.org](https://church-at-the-park.org) for more info

Church at the Park (CAP) is a non-profit located in Salem, OR serving unhoused adults and families in Marion and Polk Counties. CAP empowers people to change their lives and exit poverty by providing low barrier shelter and employment services.

DJ Vincent - (503) 949-2124  
Pastor & CEO, Church at the Park  
[dj.vincent@churchatthepark.org](mailto:dj.vincent@churchatthepark.org)