



CRITICAL RESPONSE GROUP

America's Common Operating Picture®

School Mapping

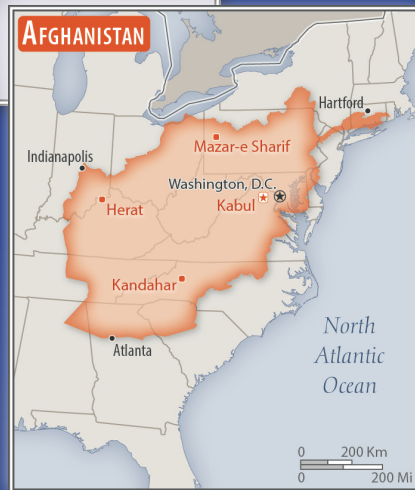
Presented by Josh Longenecker

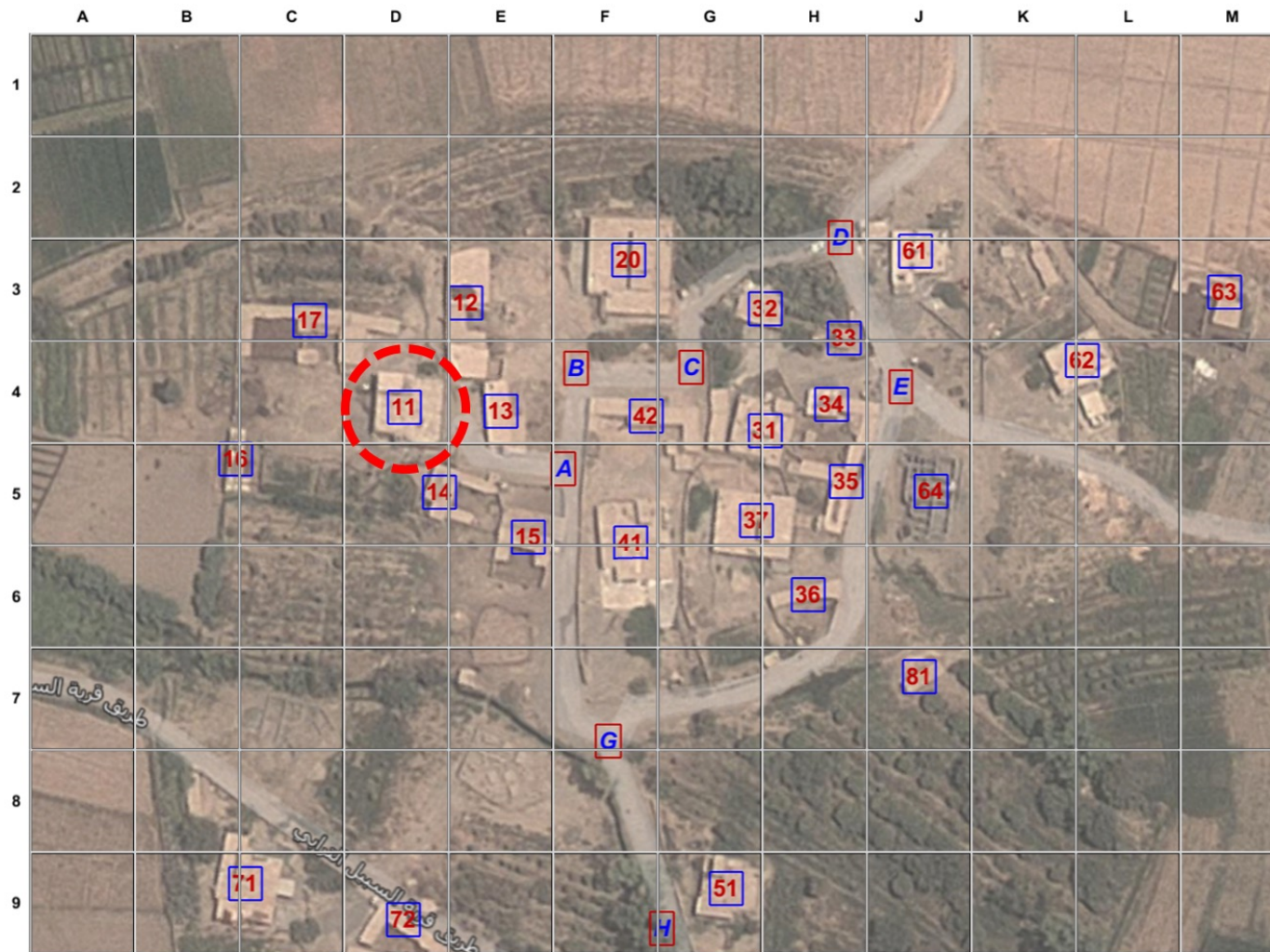
*Director
Pacific Northwest*





Development of the Gridded Reference Graphic (GRG)





North is UP

Date

25 Yard Grid

Iraq Village #192



Mapping Technique Was Derived From a Military Best Practice

Validated and Implemented at the Highest Level

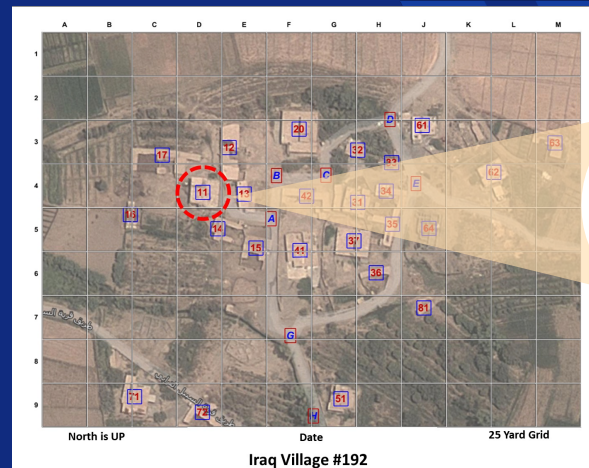


GRG in use during Bin Laden raid.



NAVY SEAL ROB O'NEILL

- ✓ Communication technique used by **US Military Special Operations** in every mission of the last 20 years.
- ✓ Turns the operational area **into a simple game of battleship**, so that operators from the different services, agencies, and nationalities can **speak a common language about an unfamiliar location under stress**.

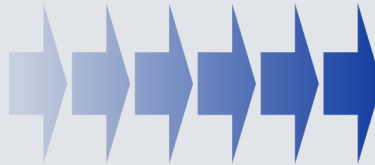
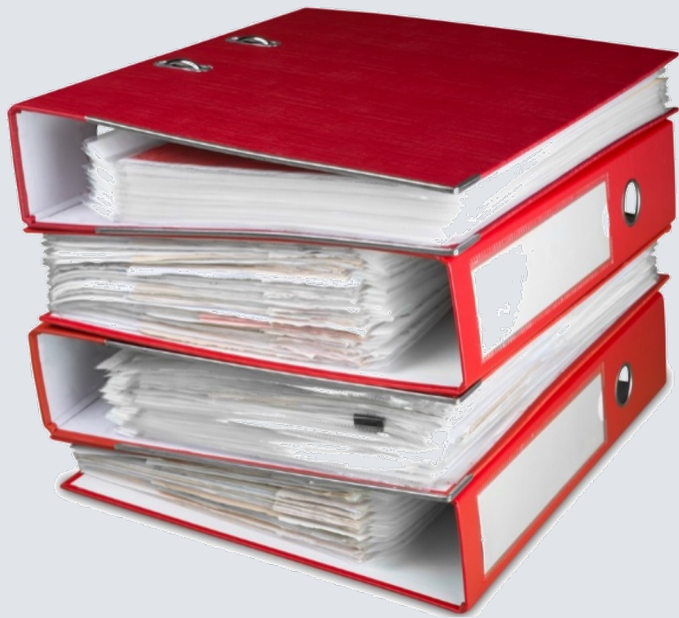


Sample gridded reference graphic.



Evolution of the GRG into the CRG

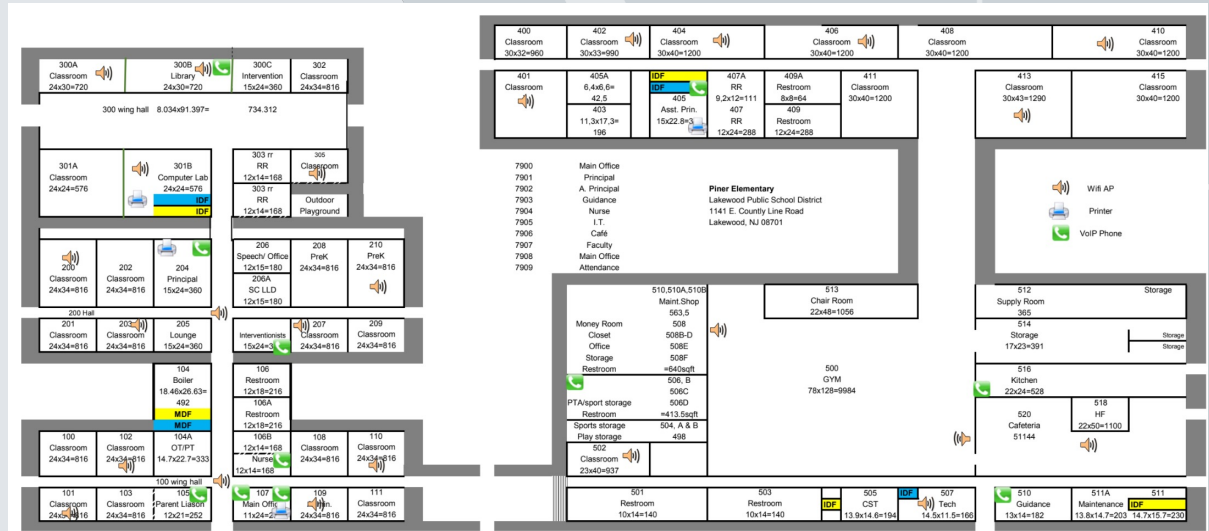
Collaborative Response Graphics.





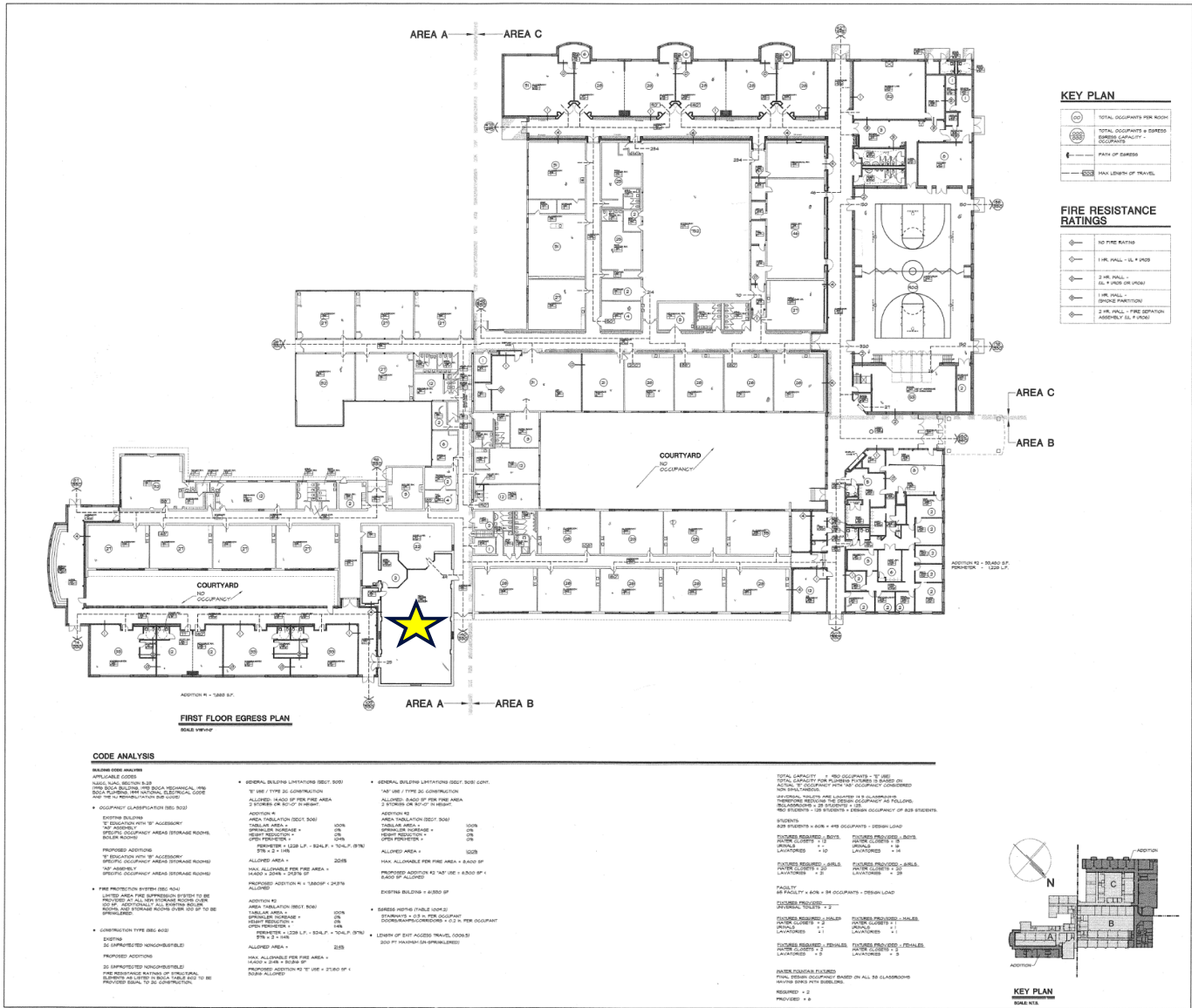
Unusable, Inaccurate, and Inaccessible Floor Plans

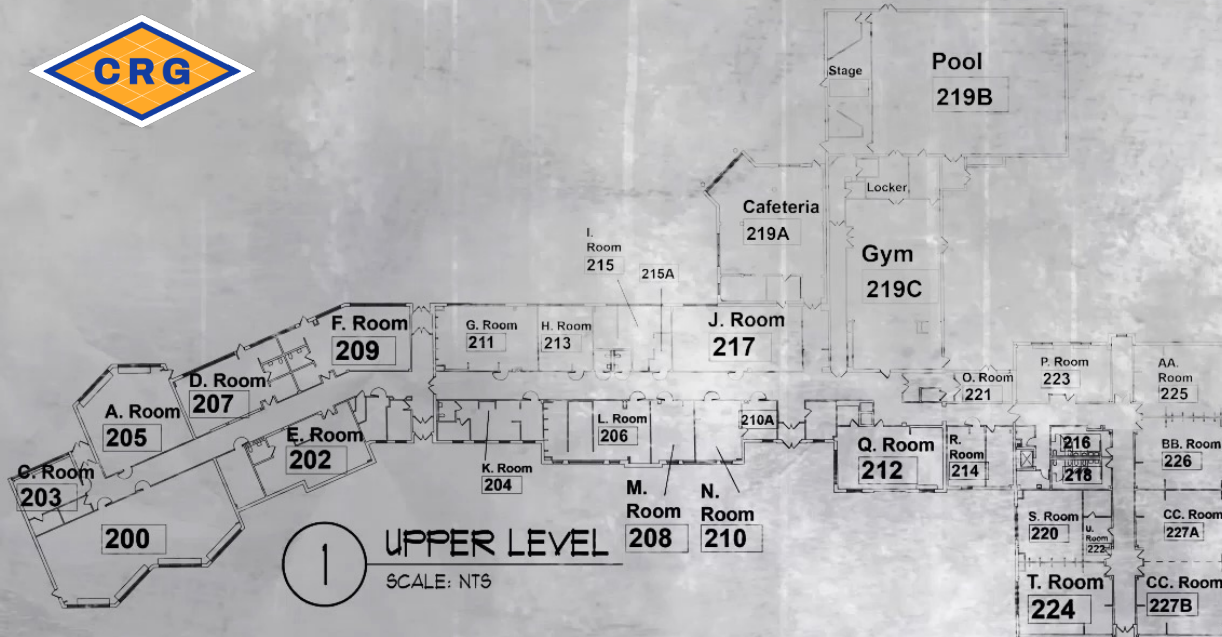
According to the Texas House Committee on Youth Health and Safety report on the Uvalde incident, **"the schematic maps of the campus design used by law enforcement to identify potential points of entry were inaccurate.** They wrongly depicted classrooms 111 and 112 as sharing a wall with the library, when in reality, the back walls were flanked with windows. Law enforcement officers testified to the Investigative Committee that they asked whether they could gain access to the classrooms through windows but were deterred by the inaccurate plans." (Page 40-41 *Uvalde After Action- Youth-Health-&-Safety-Committee-Interim-Report-2022*)



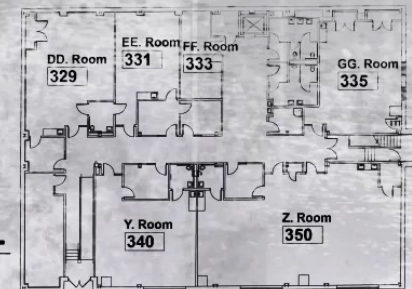
According to the after-action report by the Connecticut State Police after the Sandy Hook Elementary incident, “When officers conducted initial and subsequent searches of the school... **...neither floorplans nor schematics of the school were readily available for tactical team search units.**” (Page 22, *Sandy Hook After Action Report- Connecticut State Police*)







1 UPPER LEVEL
SCALE: NTS



2 LOWER LEVEL
SCALE: NTS

ACME & ABC FLOOR PLANS

123 N. There St.
Somewhere, NJ

Architecture • Interior Design
Planning • Project Management

Chris Smith
Tom Penny

consultant:

client/project:

THIS-SCHOOL
BOARD OF EDUCATION
LRFP
456 Over-there Rd.
Backroad, NJ 08000

drawing title:

REVISIONS	002		
no.	date	description	
drawn	check	scale	
MP	MP	AS NOTED	
issue date		project no.	
		0535	
drawing number			

A-1



EPK 01 DEC 2017



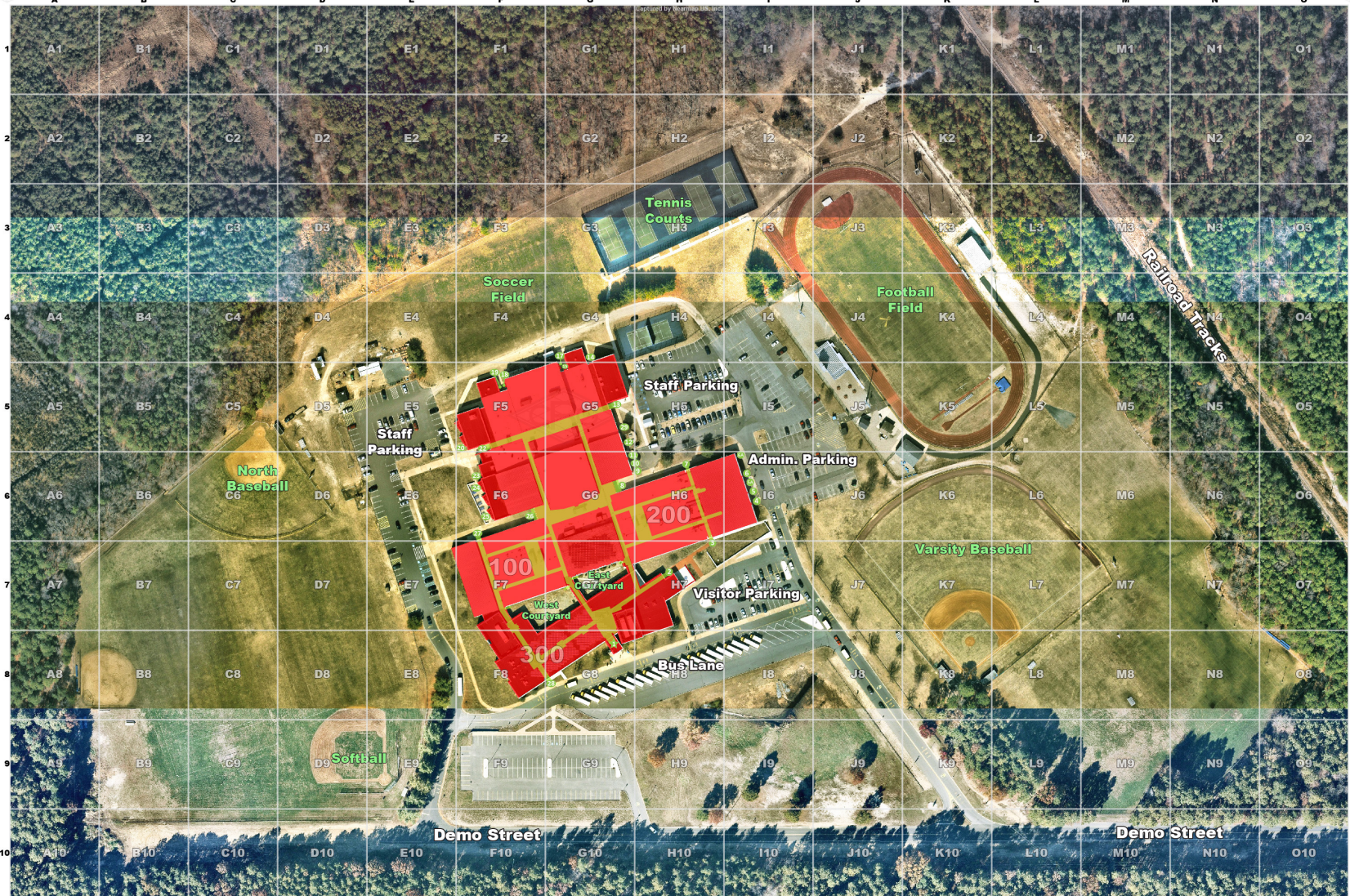
Created by:
CRITICAL RESPONSE GROUP
A Rodgers Group Company

20 YARD GRID

Version
Control #
D1.0

Anywhere Elementary School
123 Main St. Anytown, NJ 12345





Collaborative Response Systems™ is a CRG Regional Group, Inc. | www.CRGplans.com



Version Control # D1.0

MACRO
Demo High School
200 Demo Street, Anywhere, NJ 06789

(732) 779-4393
info@crplans.com
www.CRGplans.com

Collaborative Response Systems™ is a CRG Regional Group, Inc. | www.CRGplans.com



North UP
Version
Control #
20 V1.0

Micro
Demo High School
200 Demo Street, Anywhere, NJ 06789

(732) 779-4393
info@crplans.com
www.CRGplans.com

Floor Plan Locations



Large Format Prints



Binder Inserts



CDs



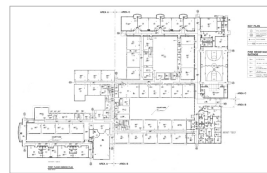
Local Hard Drives



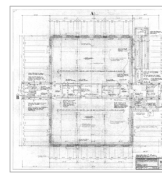
Various File Types



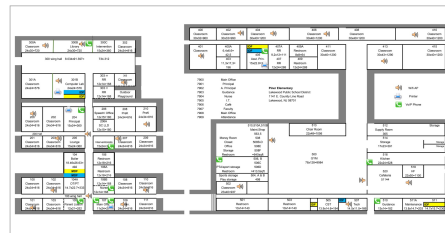
Floor Plan Conditions



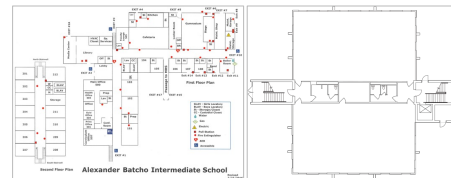
Raster Plans



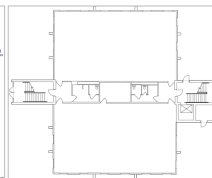
Poor Quality Plans



Abstract Plans



Segmented Plans



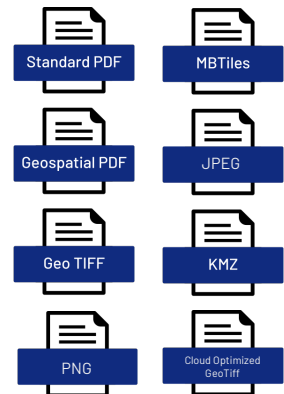
Unlabeled Plans

Collaborative Response Graphic



CRG File Formats

Standard Raster Files



WMS

Vector Data Outputs *Optional*



Emergency Response Mapping Data Law

- (a) It must be **compatible** with platforms and applications used by **local, state, and federal public** safety officials.
- (b) It must not require the purchase or integration of **additional software** to view the mapping data.
- (c) It must be provided in a printable format.
- (d) It must be verified for accuracy through a **walk-through** of a school building and school grounds.
- (e) It must be oriented **true north**.
- (f) It must include **accurate floor plans** overlaid on **current aerial imagery** of a school building or school plan.
- (g) It must include **site-specific labeling that matches the structure** of the school building, including room labels, hallway names, external door or stairwell numbers, locations of hazards, key utility locations, key boxes, automated external defibrillators, and trauma kits.
- (h) It must include **site-specific labeling that matches the school grounds**, including parking areas, athletic fields, surrounding roads, and neighboring properties.
- (i) It must include a **gridded overlay with x/y coordinates**.
- (j) provided to the school district and appropriate public safety agencies at no cost beyond the initial cost of production and shall be made available to such entities permanently.



Questions

Jlongenecker@crgplans.com

971-260-7884