
ROGUE SISKIYOU REGIONAL WILDFIRE TRAINING FACILITY

Addressing Oregon's Wildfire Crisis
Through Training & Preparedness



OREGON'S WILDFIRE CRISIS IS ESCALATING

Oregon wildfires burned **nearly 2 million acres** in 2024.

\$350+ million in suppression costs, with billions more in losses.

2020 Labor Day Fires: Over 1.2 million acres burned, **5,000+ structures destroyed**.

Air quality & tourism impacts: Smoke affects the entire state, damaging public health and the economy.



***“WE NEED MORE TRAINED FIRE FIGHTERS
FOR THE LARGE PROJECT FIRES. WE RUN OUT
OF TRAINED FIRE CREWS EVERY YEAR AND
FIRES GET BIGGER AS A DIRECT RESULT”***

– Mark Labhart, Incident Commander for Oregon’s Fire
Team 1 of the Governor’s Wildfire Response Council.

WILDFIRE THREATS ARE DRIVING INSURERS OUT OF OREGON



Wildfire losses since 2020 exceed **\$3 billion**—more than the previous 40 years combined.



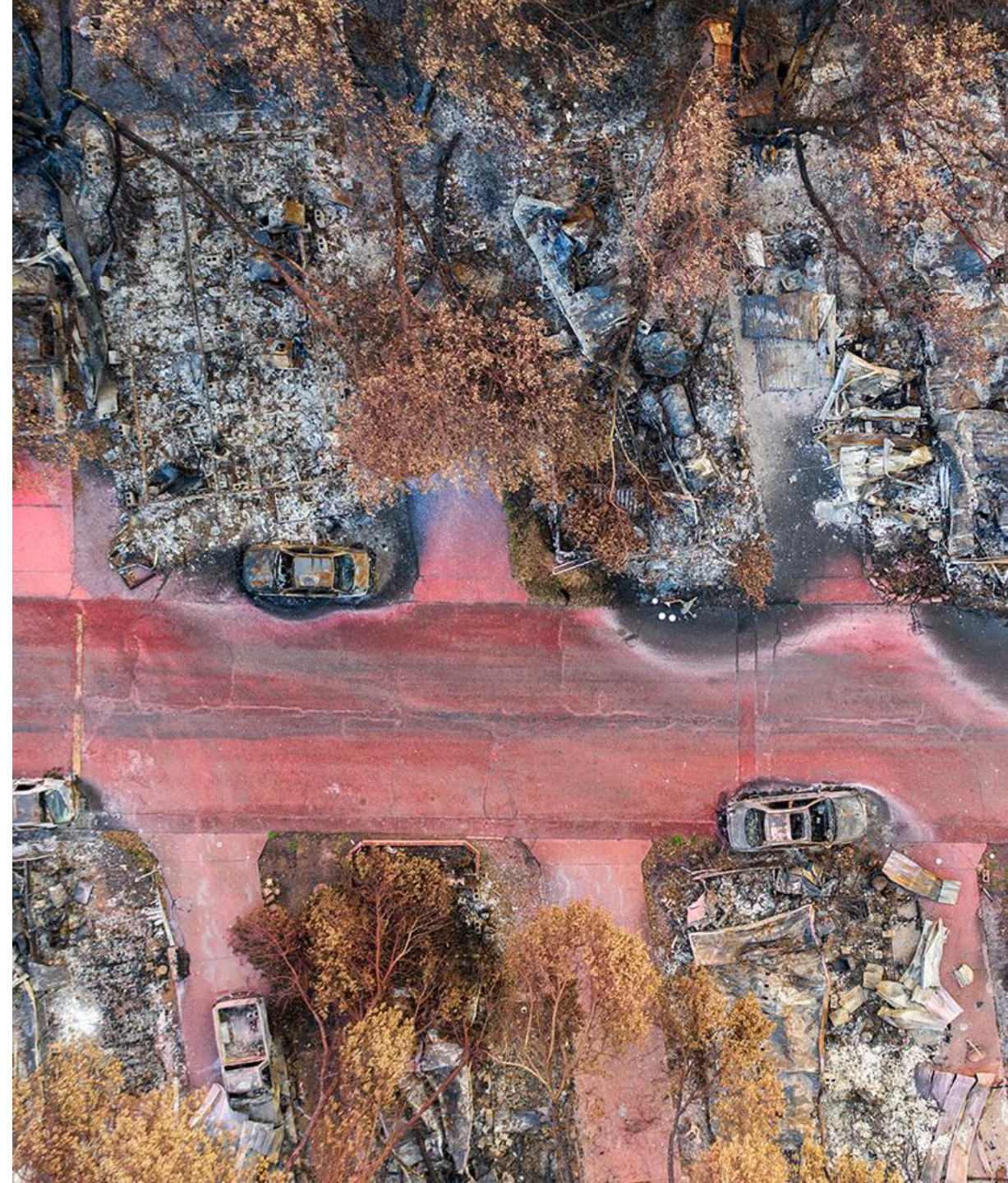
Homeowners face skyrocketing insurance rates or outright cancellations.



Some insurers have **stopped writing new policies** in high-risk areas.



The **solution**: Mitigate risk through proactive firefighting and preparedness.





A BOLD, PRACTICAL SOLUTION: THE ROGUE SISKIYOU REGIONAL WILDFIRE TRAINING FACILITY

- **Over \$4 million raised** in cash and in-kind donations
- Trains up to **1,500 wildfire cadets annually**
- Reduces reliance on out-of-state and out-of-country crews
- Enhances **rapid response capabilities**
- Supports **incident command & emergency logistics**

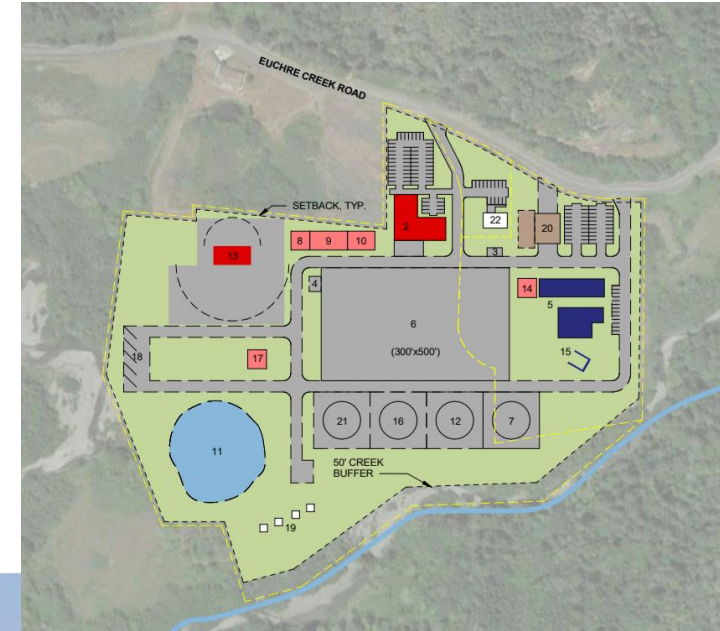
This \$33 million project will pay massive dividends to the state if it prevents even one wildfire

A STATE-OF-THE-ART PURPOSE-BUILT FACILITY FOR YEAR-ROUND TRAINING & EMERGENCY RESPONSE

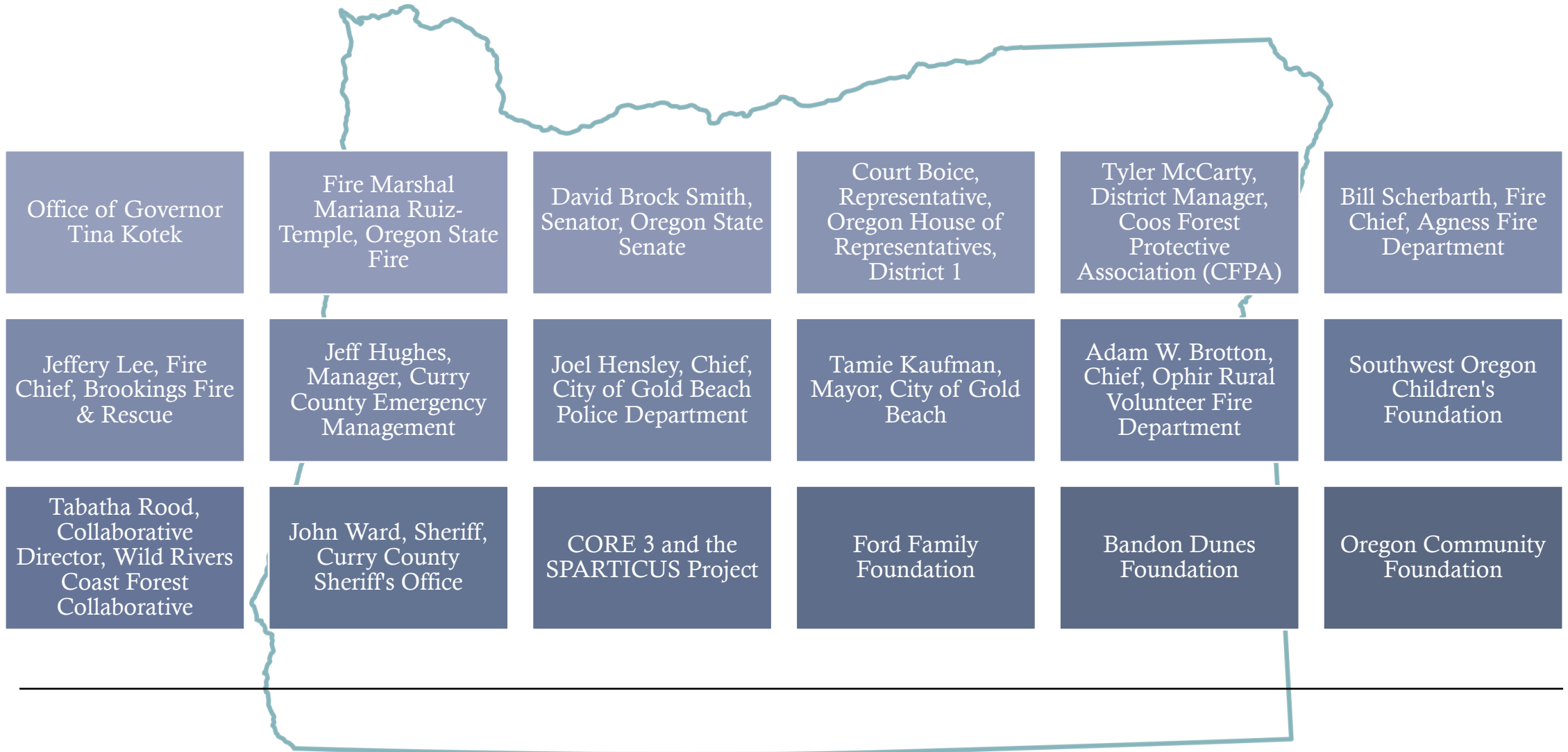
Southern Oregon wildfire and disaster command center

Classrooms, dorms, cafeteria for 200+ personnel

Heli-base & rapid response hand crews for fighting wildfires



JUST A FEW MEMBERS OF OUR STATEWIDE COALITION OF SUPPORTERS



THE COST OF INACTION: RECENT WILDFIRE DISASTERS

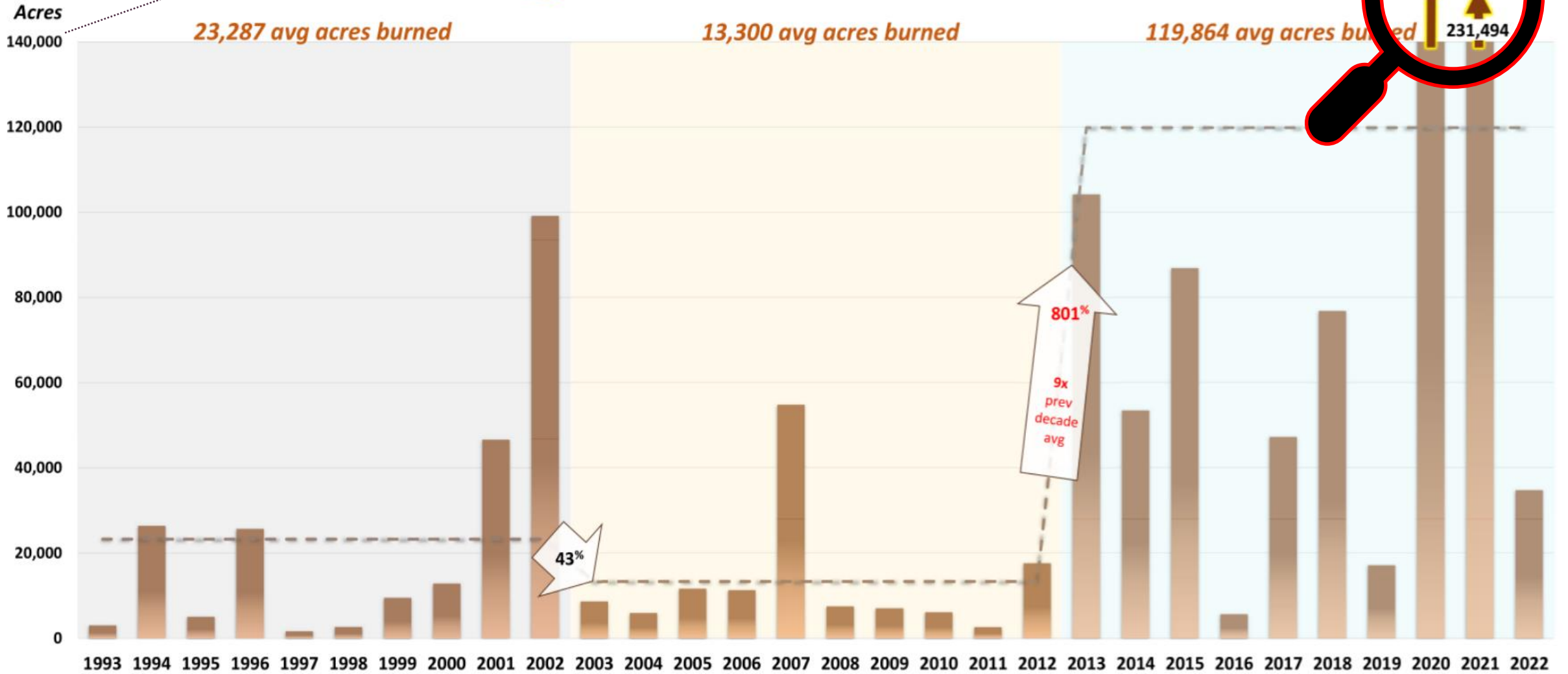
- **Almeda Fire (2020):** 2,800 structures destroyed, 8,500 residents displaced.
- **Obenchain Fire (2020):** 32,000 acres burned, 153 structures lost.
- **Bootleg Fire (2021):** 413,000 acres, 2,300 personnel required.
- **Chetco Bar Fire (2017):** 191,000 acres, came within miles of Brookings.





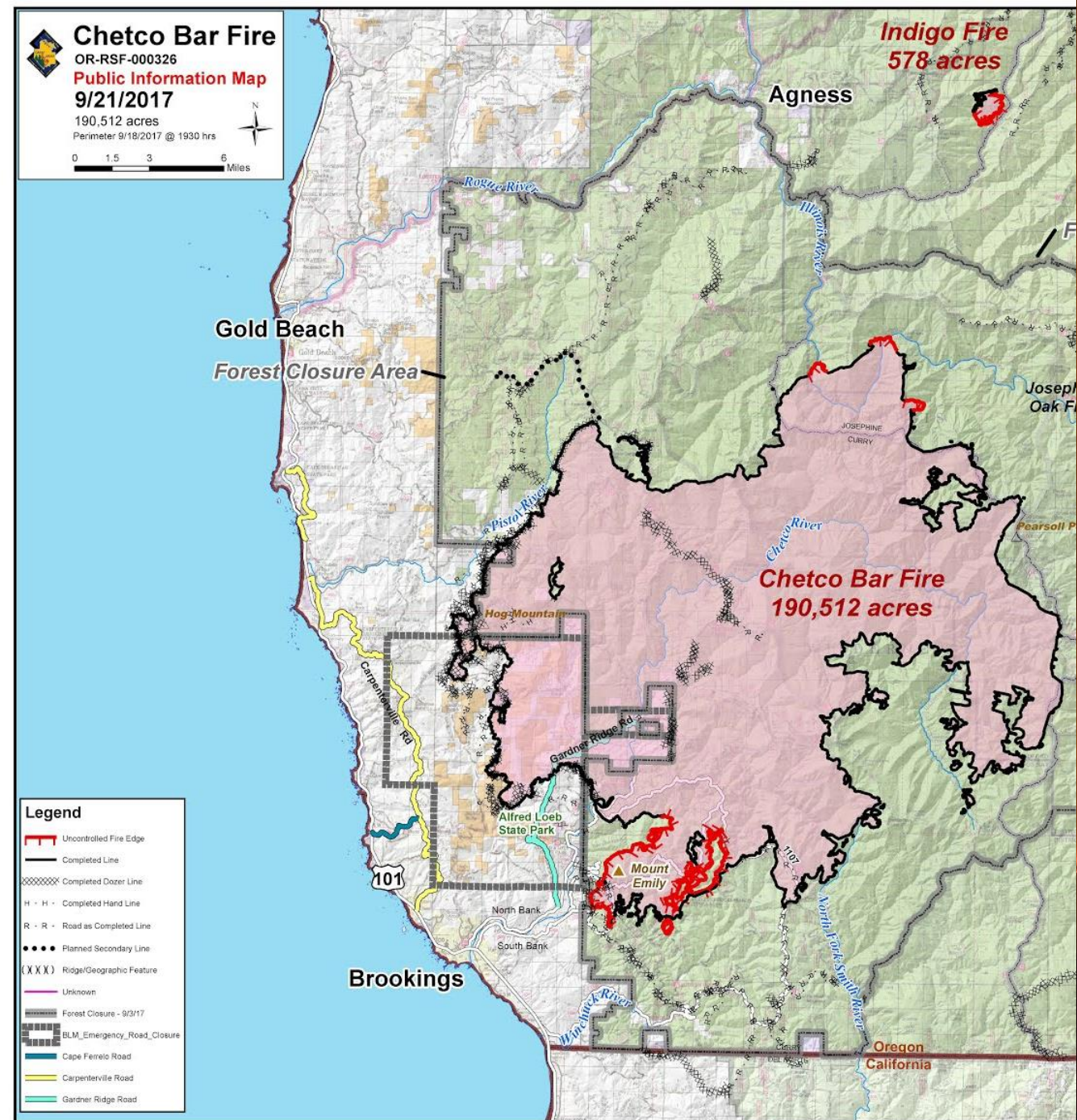
ODF Protected Lands - Wildfire Acres Burned by Decade

1/06/2023. ODF.



DISASTERS AVERTED... BUT JUST BARELY

- **Chetco Bar Fire:** A sudden wind shift saved Brookings—next time, we may not be so lucky.
 - **Eagle Creek Fire (Columbia Gorge):** Threatened Multnomah Falls Lodge & Portland outskirts.
 - **Adequate response teams could have reduced these fires' impact early.**
-



SITE LOCATION:

EUCHRE CREEK VALLEY

— OPHIR, OREGON

Oregon Coast

Coos Bay

Gold Beach

Brookings



THE PERFECT TRAINING LOCATION: ROGUE-SISKIYOU NATIONAL FOREST

- **Remote yet accessible:** Located in Curry County, near Gold Beach.
 - **Diverse and rugged fire conditions:** Training in forests, hills, and dry brush.
 - **Former industrial site repurposed for high-impact use.**
-



BUILDING THE NEXT GENERATION OF FIREFIGHTERS



GRADE SCHOOL, HIGH
SCHOOL, AND
COLLEGE OUTREACH &
FIREFIGHTER CADET
PROGRAMS.



IMPACTFUL AND
REWARDING WORK.



DIRECT EMPLOYMENT
PIPELINES TO **ODF**,
USFS, & **FIRE
DISTRICTS**.

A YEAR-ROUND FIREFIGHTER WORKFORCE

- Rep. Val Hoyle supports retaining **firefighters** for off-season fuels work.
- Trained crews will perform **fuel reduction, prescribed burns**.
- Reducing wildfire severity saves Oregon **millions in suppression costs**.

Goal of RSR: **Recruit–Train–Retain**

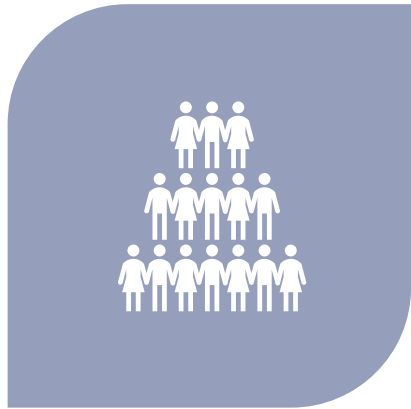


A LOOK AT THE FUTURE OF WILDFIRE TRAINING



MACKENZIE.

A CRUCIAL BASE FOR FIREFIGHTING OPERATIONS



FACILITY AND SITE CAN HOUSE AND SUPPORT **500+ FIREFIGHTERS AND DISASTER REFUGEES** DURING ACTIVE WILDFIRES AND OTHER DISASTERS.



AIR SUPPORT & EQUIPMENT STAGING FOR RAPID RESPONSE WITH ON-SITE HELICOPTER HAND CREWS.



COULD HAVE BEEN THE DIFFERENCE MAKER FOR RECENT FIRES.

THE TIME TO ACT IS NOW

- This facility will **save lives, protect homes, and dramatically reduce costs.**
- **Support Wildfire Preparedness** and invest in a safer future for Oregon.
- **Contact Us:**
 - Rogue Siskiyou Regional Wildfire Training Center
 - Ty Krieger, Executive Director
 - 707-972-4851
 - info@roguefire.org
 - P.O. Box 1444, Gold Beach, OR 97444

