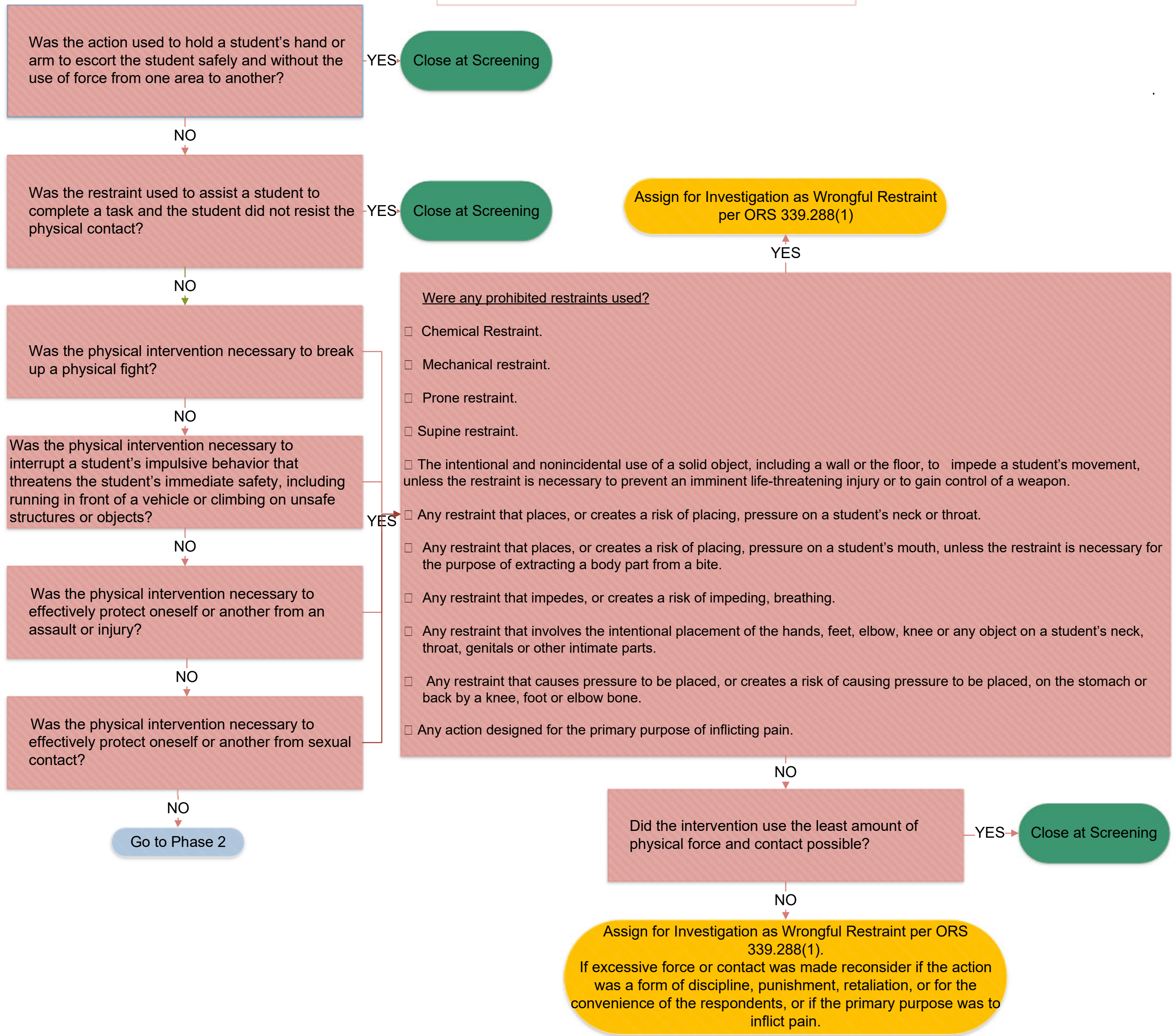
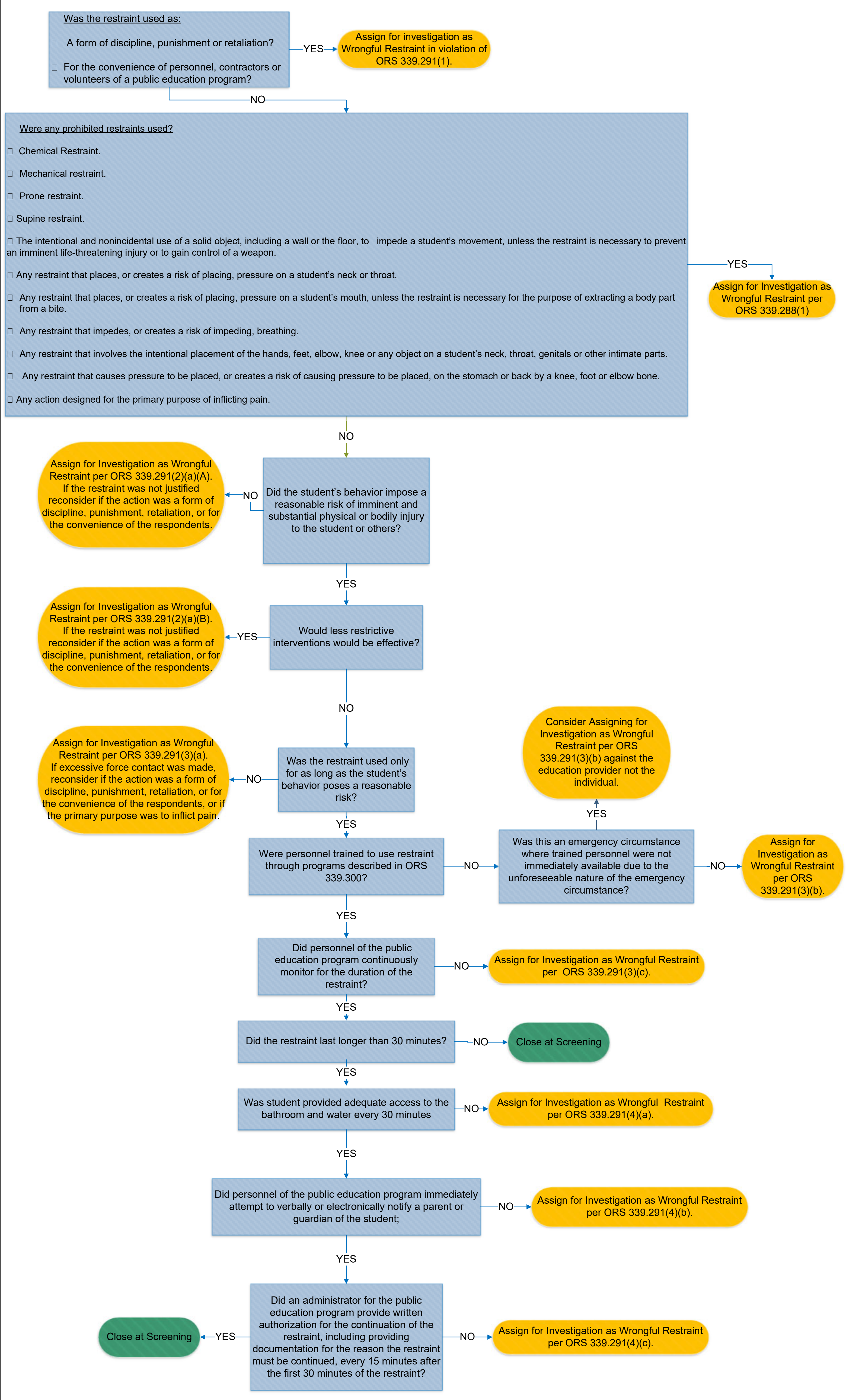


Report of Possible Wrongful Restraint

PHASE ONE



PHASE TWO



DEFINITIONS

“Chemical restraint” means a drug or medication that is used on a student to control behavior or restrict freedom of movement and that is not:
 (A) Prescribed by a licensed physician or other qualified health professional acting under the professional's scope of practice for standard treatment of the student's medical or psychiatric condition; and
 (B) Administered as prescribed by a licensed physician or other qualified health professional acting under the professional's scope of practice.

“Mechanical restraint” means a device used to restrict the movement of a student or the movement or normal function of a portion of the body of a student.
 “Mechanical restraint” does not include:
 A protective or stabilizing device ordered by a licensed physician; or
 A vehicle safety restraint when used as intended during the transport of a student in a moving vehicle.

“Prone restraint” means a restraint in which a student is held face down on the floor.

“Restraint” means the restriction of a student's actions or movements by holding the student or using pressure or other means.

“Serious bodily injury” means any significant impairment of the physical condition of a person, as determined by qualified medical personnel, whether self-inflicted or inflicted by someone else.

“Supine restraint” means a restraint in which a student is held face up on the floor.