

STATE OF OREGON FRESH WATER INVASIVE MUSSEL EARLY DETECTION MONITORING OUTLOOK

***DR. ARICK ROUHE
CENTER FOR LAKES AND RESERVOIRS***

HB 2981 Public Hearing

March 13, 2025



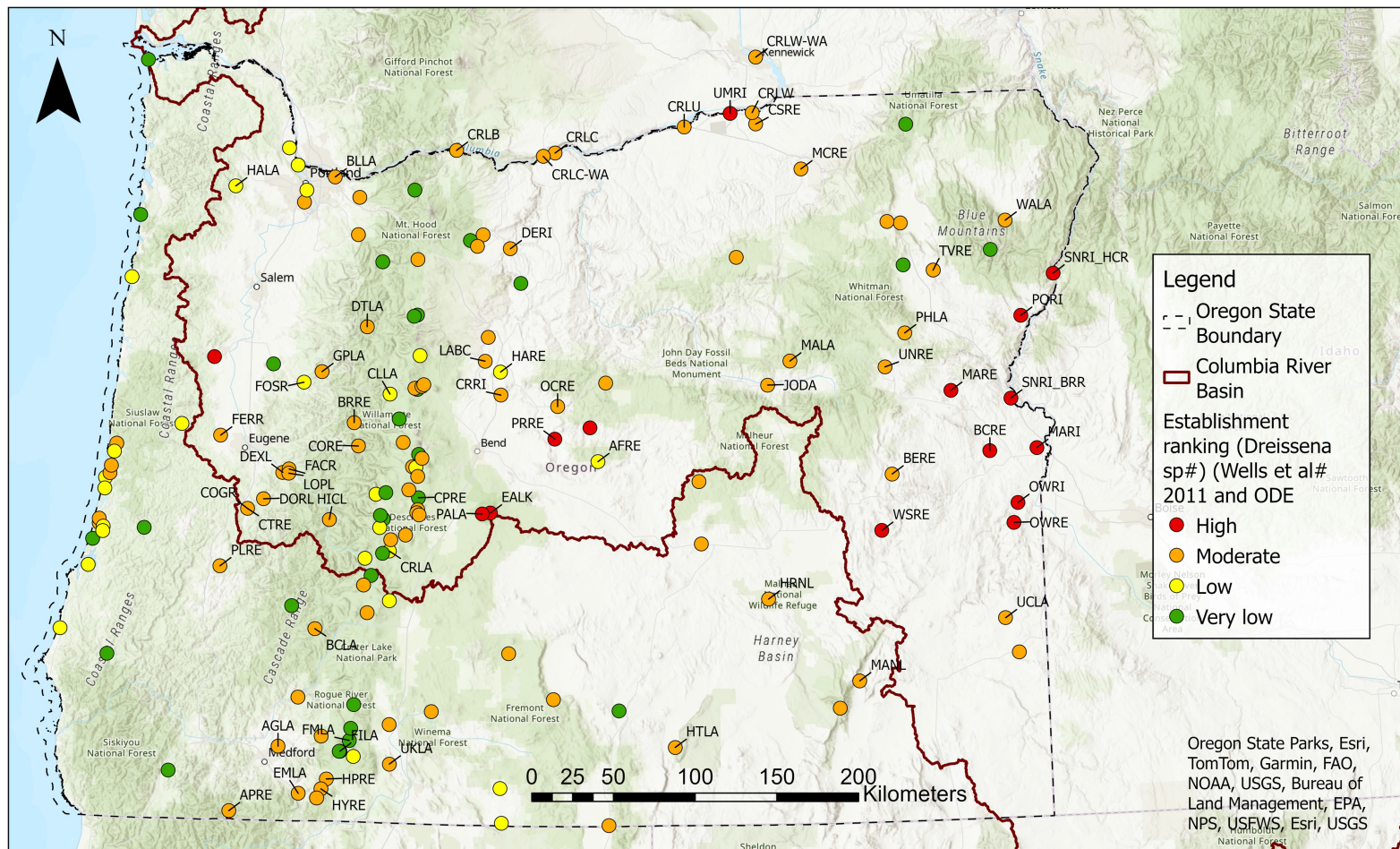
Center for Lakes and Reservoirs (CLR) *at Portland State University*



- ✓ **Established** by ORS 352.691 to be administered by Portland State University
- ✓ **Assist state and federal agencies in researching and mitigating nonindigenous, invasive aquatic species in Oregon**
- ✓ Work with communities in developing effective management of lakes and reservoirs

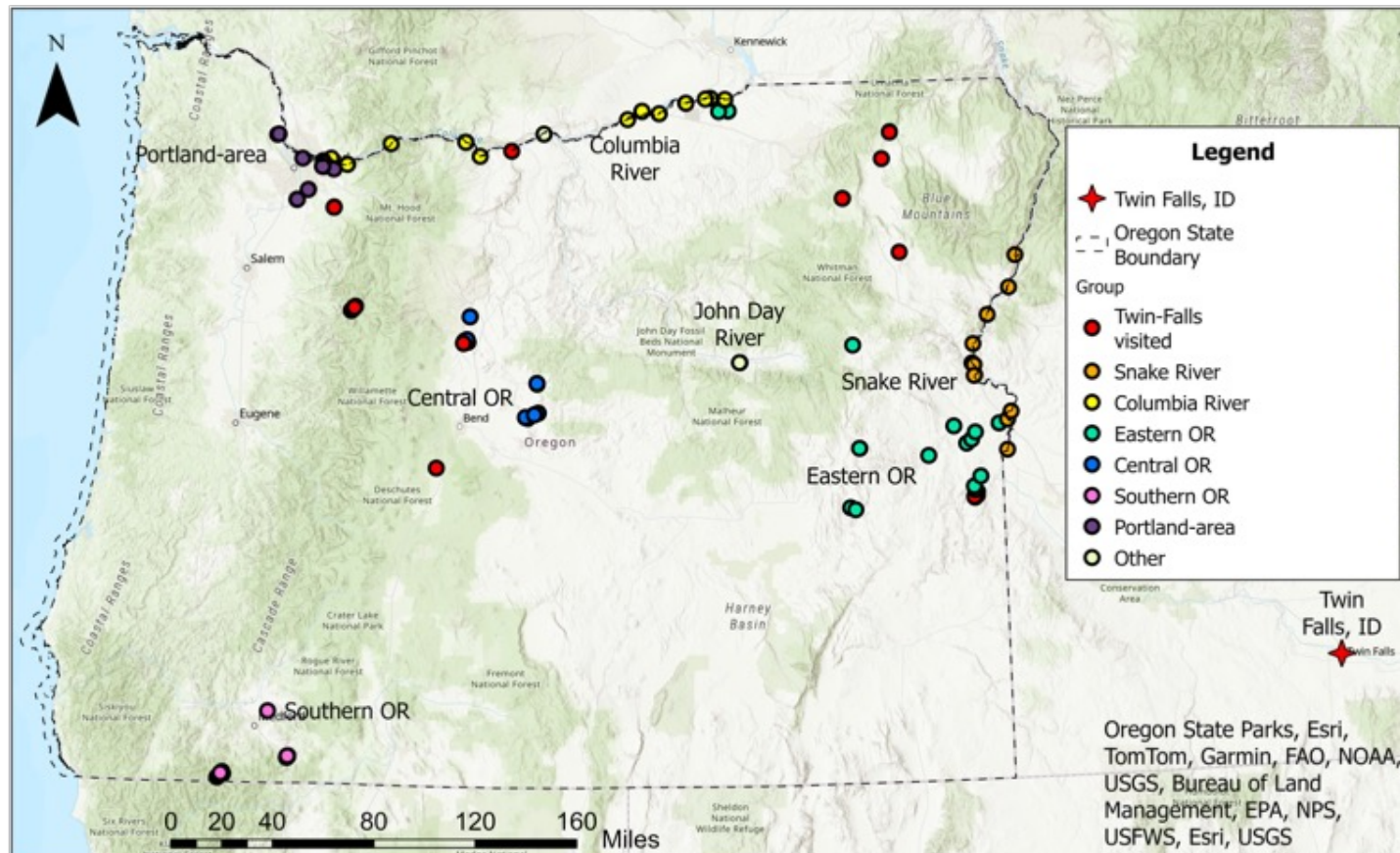


CLR Early Detection Monitoring Locations



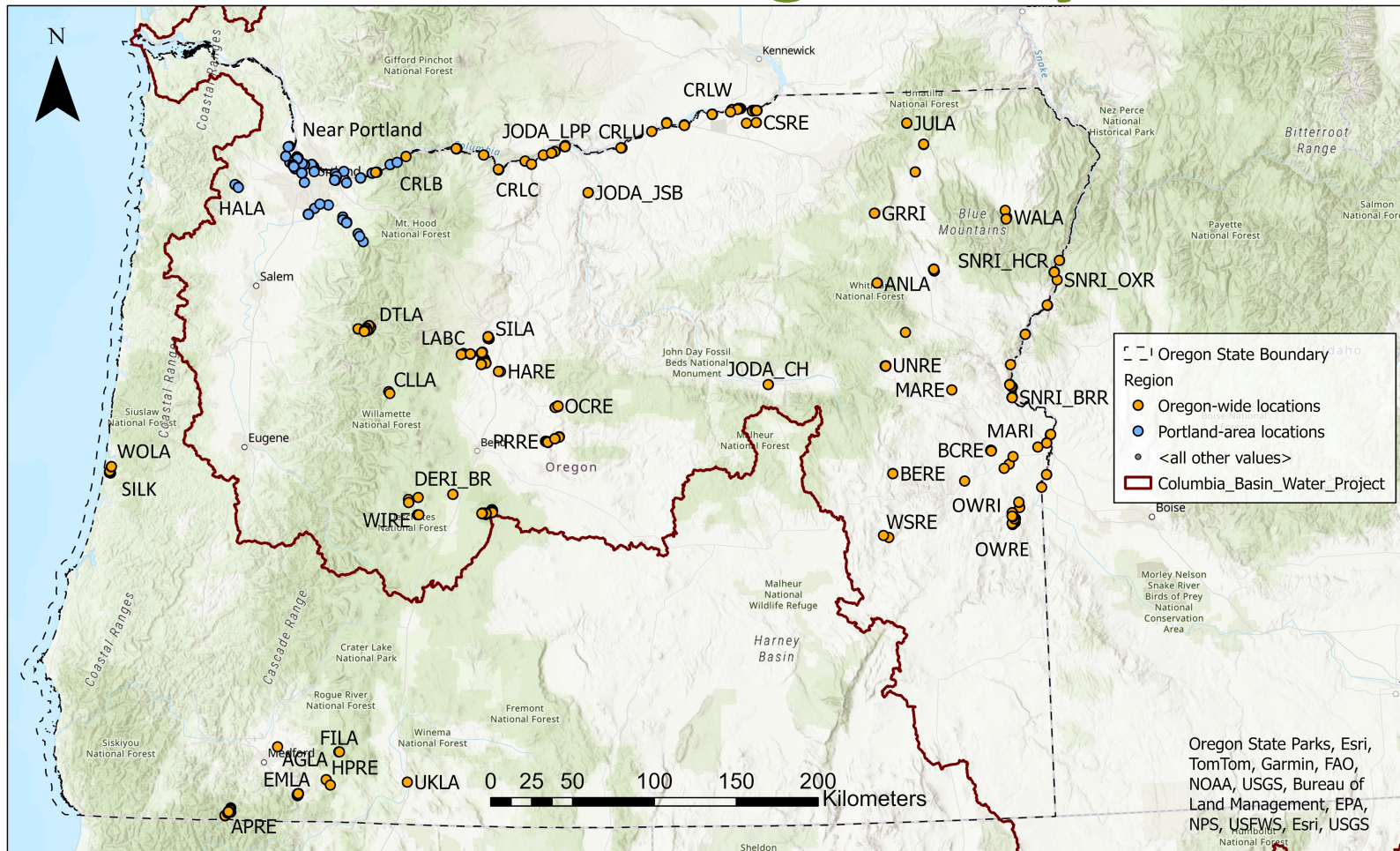


Water bodies visited by boats from Twin Falls around Quagga event in 2023

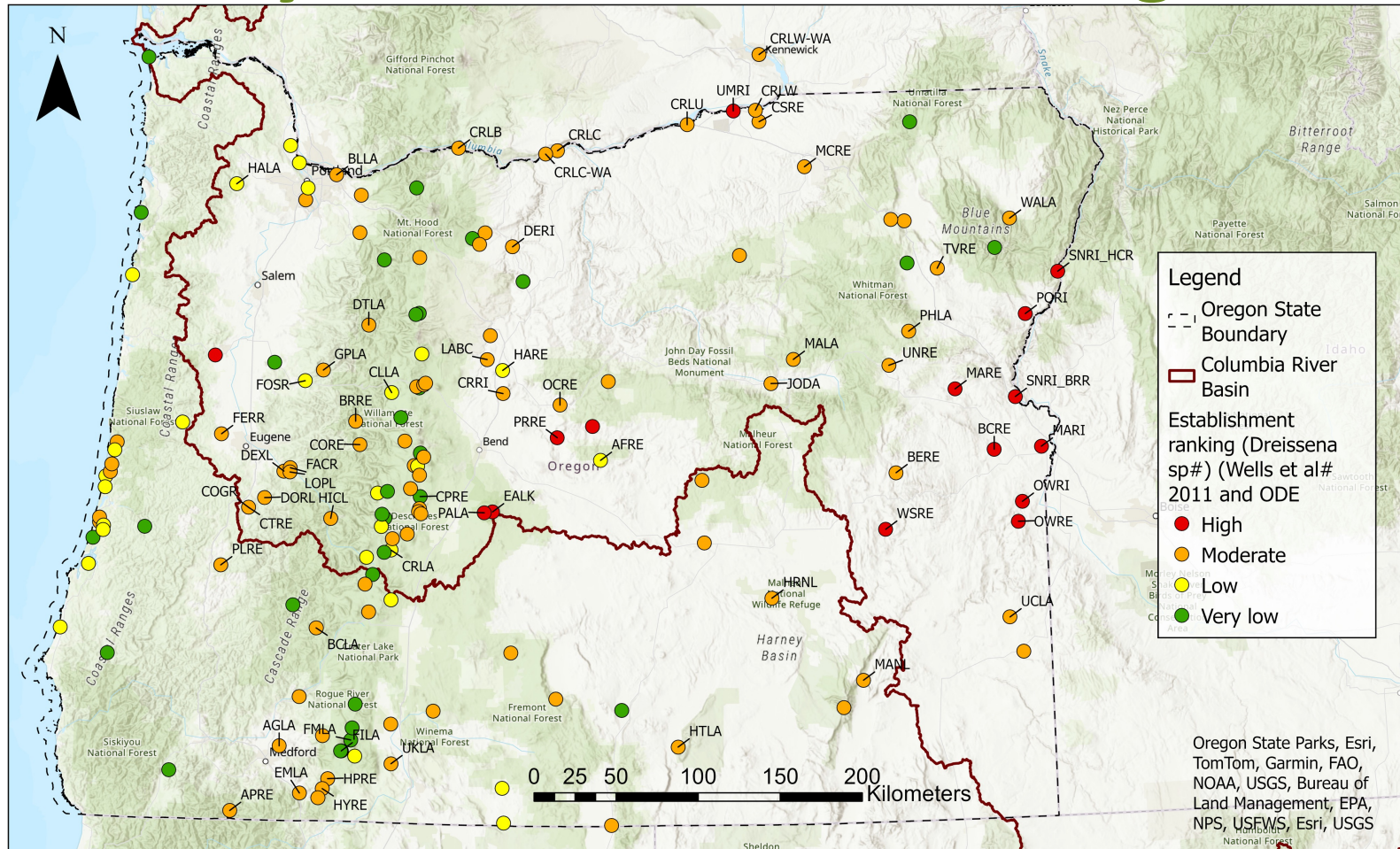




CLR AIS Monitoring Surveys 2024



CLR Early Detection Monitoring Locations



HB 2981 Monitoring Key Take Away Points

- Early detection monitoring is the canary in the coal mine for mussel invasions
- CLR does not have the resources to visit all priority sites each year with current resources
- Targeted monitoring has allowed for minimum threshold of monitoring only at highest priority waterbodies
- HB 2981 funding for monitoring would allow CLR to meet minimum threshold of monitoring priority waterbodies

