

worksource
OREGON



OREGON WORKFORCE
PARTNERSHIP

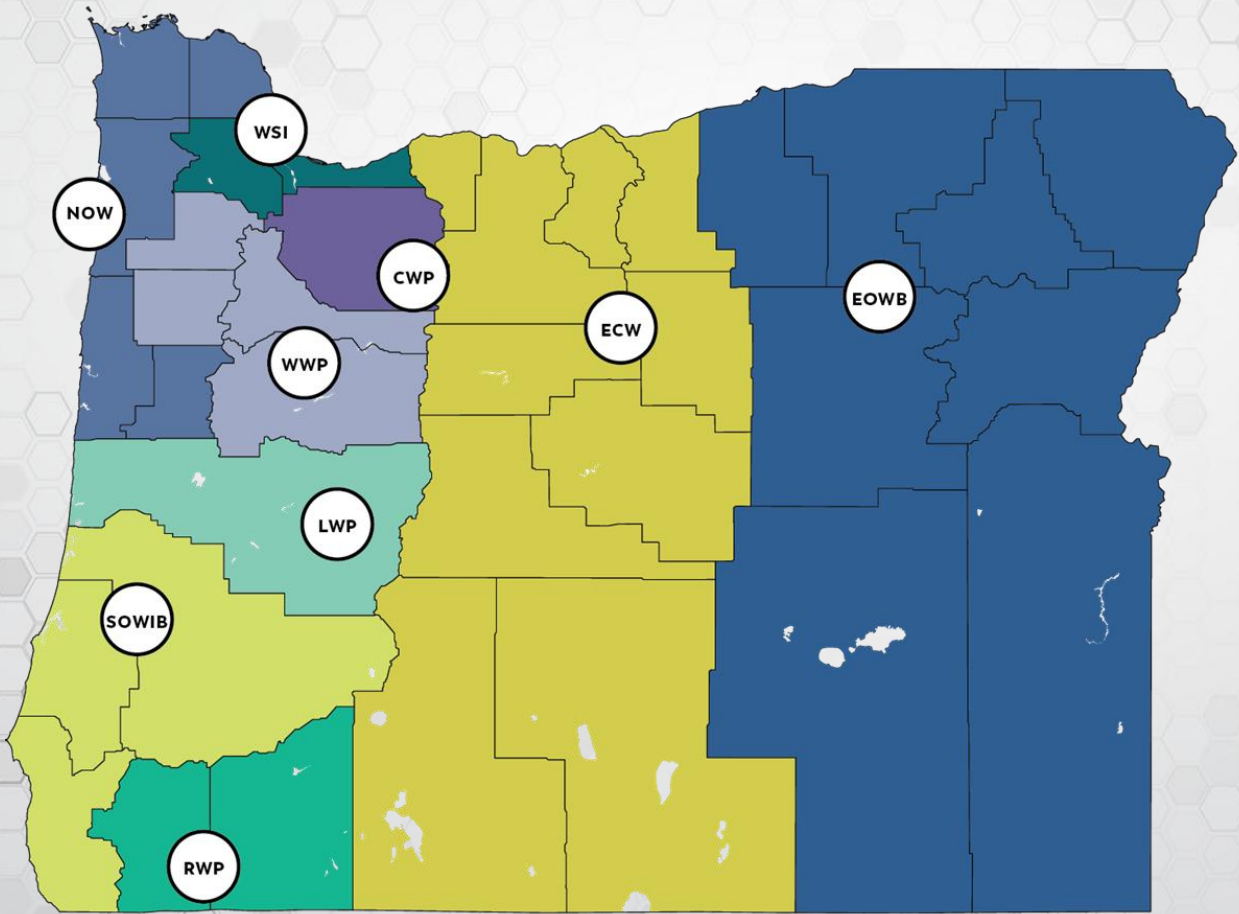
Building on the Success of Prosperity 10K

LOCAL WORKFORCE BOARDS &
WORKSOURCE OREGON



PRESENTED BY Kim Parker-Llerenas

LOCAL WORKFORCE BOARDS



- 
ROGUE WORKFORCE PARTNERSHIP 
- 
East Cascades WORKS
Connecting Talent To Opportunity 
- 
NORTHWEST OREGON WORKS 
- 
LANE WORKFORCE PARTNERSHIP 
- 
WILLAMETTE WORKFORCE PARTNERSHIP 
- 
EOWB
EASTERN OREGON WORKFORCE BOARD 
- 
Southwestern Oregon
SOWIB
Workforce Investment Board 
- 
Clackamas Workforce Partnership 
- 
work systems 



50% Local Business and Private Sector



20% Labor and Apprenticeship



Education and Training

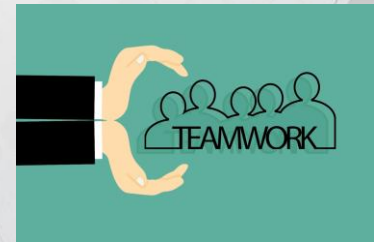


Government, Economic, Community
Development

Plus, Other Category (Per CLEO)

113 Private-sector
businesses sit on our
LWBs

Engage with an additional
927+ businesses in high-
growth, living-wage
occupations and
industries



We are the LOCAL table that brings all groups together



Prosperity 10,000 (P10K) Overview and Outcomes

WHO ARE THE PRIORITY POPULATIONS?



- Communities of color (45%)
- Women (45%)
- Low-income communities (40%)
- Rural and frontier communities (41%)
- Veterans (3%)
- Persons experiencing disabilities (10%)
- Incarcerated and formerly incarcerated individuals (14%)
- Members of Oregon's nine federally recognized Indian tribes (1%)
- Individuals who disproportionately experience discrimination in employment based on age (57%)
- Individuals who identify as members of the LGBTQ+ community (4%)

**Percentages are self-reported to-date and not final*

WHY P10K WORKED!



- **Fast-tracked funding**
- **Focused on priority populations**
- **Locally developed and managed programs**
- **Flexible funding to meet the needs of individual communities**
- **Local boards have a track record of success**

P10K SUCCESSES *TO-DATE



Program Completion
Goal: 80%
Outcome: 88%



Participants Employed
Goal: 75%
Outcome: 74%



Women Enrolled
Goal: 50%
Outcome: 47%



Wage Over \$17/hour
Goal: 75%
Outcome: 89%

P10K SUCSESSES *TO-DATE

- **Total served as of 1/31/25 is 6,155**
- **96% of those served identified with at least one priority population**
- **Average hourly wage is \$23.85**
- **Funding allowed for new programming with new community partners, serving people we haven't served before.**

Thank you!

worksource
OREGON



OREGON WORKFORCE
PARTNERSHIP