

CORE3: Central Oregon Ready, Responsive, Resilient Center



Panel Presentation for HB 3084 Hearing February 20, 2025

House Committee On Emergency Management, General Government, and Veterans

Scott Aycock, CED Director, COIC



The Need

Large-Scale Disasters

- Central Oregon, Oregon, and the Pacific Northwest face growing **threats from natural disasters** that can severely impact our households, communities, and economies.
- **Wildfires** continue to increase in size and severity each year.
- Central Oregon is a key location for disaster response and relief for the **Cascadia Subduction Zone** event.

Bend is fall-back disaster headquarters

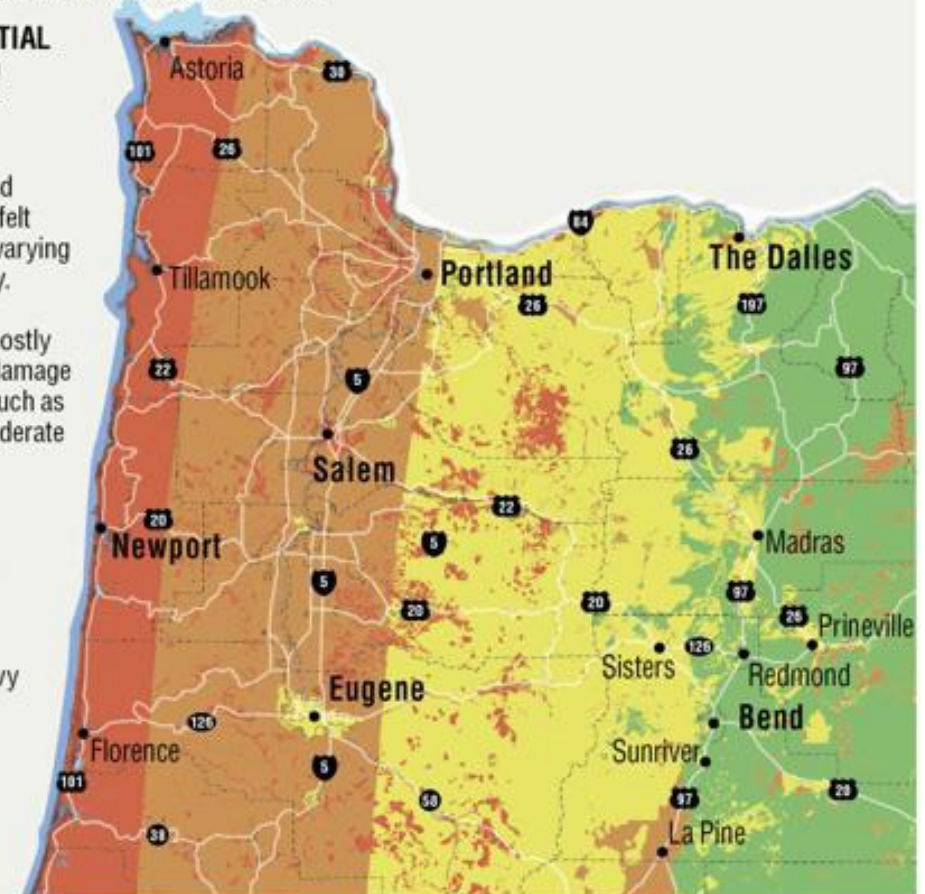
the state Office of Emergency Management will move its Emergency Coordination Center to Bend if facilities in Salem are knocked-out by the Cascadia earthquake. Redmond's airport could also be a major staging area for humanitarian relief.

DAMAGE POTENTIAL FOR SIMULATED 9.0-MAGNITUDE EARTHQUAKE

The earthquake and tsunami would be felt across Oregon to varying degrees of severity. Central Oregon is projected to see mostly light to very light damage with some areas such as La Pine seeing moderate damage.

Damage scale

- Very heavy
- Heavy
- Moderate/heavy
- Moderate
- Light
- Very Light



Sources: Oregon Seismic Safety Policy Advisory Commission, FEMA, State of Oregon Department of Geology and Mineral Industries, Oregon Office of Emergency Management

(Greg Cross/Bulletin graphic)

The Need

Coordination Center

- Central Oregon does not have a dedicated, **multi-disciplinary, & multi-agency coordination center for regional emergency response.**
- The Governor's Office and State Agencies need a **dedicated facility to ensure continuity of governance functions** during and after disaster.
- The **State needs a facility** to help manage large events:
 - In the event of **Cascadia**, Redmond and the Redmond Airport are designated as the primary Incident Support Base.
 - The State needs a **Central/Eastern Oregon facility to manage other events, like large wildfires.**

CORE3 - Phase 1



CORE3 - Phase 1



The Need

Training Facilities

- Central Oregon has **insufficient facilities to meet existing, mandatory training needs** of Local, State, and Federal public safety personnel.
- In a **rapidly growing region**, the need for trained public safety and emergency services professionals is increasing.
- The region also needs **dedicated space where multiple agencies can train simultaneously as well as collaboratively.**



The Solution

CORE3



Represents a **rare partnership** of diverse Local, State, and Federal Agencies working together to **align needs and resources**.



Provides needed facilities for both **collaborative public safety training** and **coordination of emergency response**.



Delivers **regional and statewide resilience** to major wildfires, the Cascadia Subduction Zone Event, and future threats.



CORE3 Overview

The Vision



- A dedicated, multi-agency coordination center for emergency operations.
- A resilient space for continuity of state governance functions.
- A public safety and emergency services training center to meet Local, State, and Federal training needs.



Scope of CORE3

Initial Priorities

- Site Prep, Utilities, & Environmental Remediation
- Emergency Coordination Center with Admin and Classrooms
- Fire Training Tower
- Emergency Vehicle Operator Course & Driver Skills Pad
- Multi-Scenario Pad



Facility Examples

Emergency Operations Center (EOC)



CORE3 - Phase 1



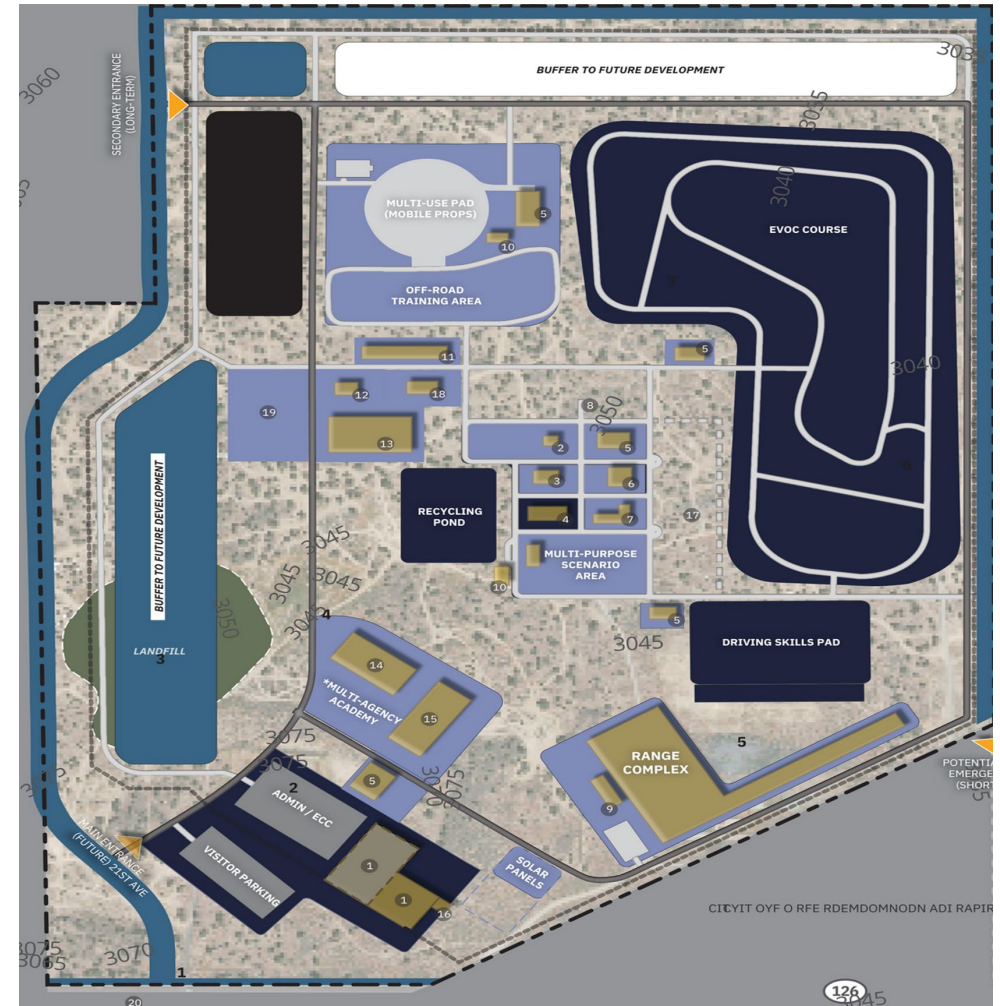
Facility Examples

Classrooms in the EOC



Facility Examples

Emergency Vehicle Operator Course (EVOC)



Facility Examples

Specialized Fire Training

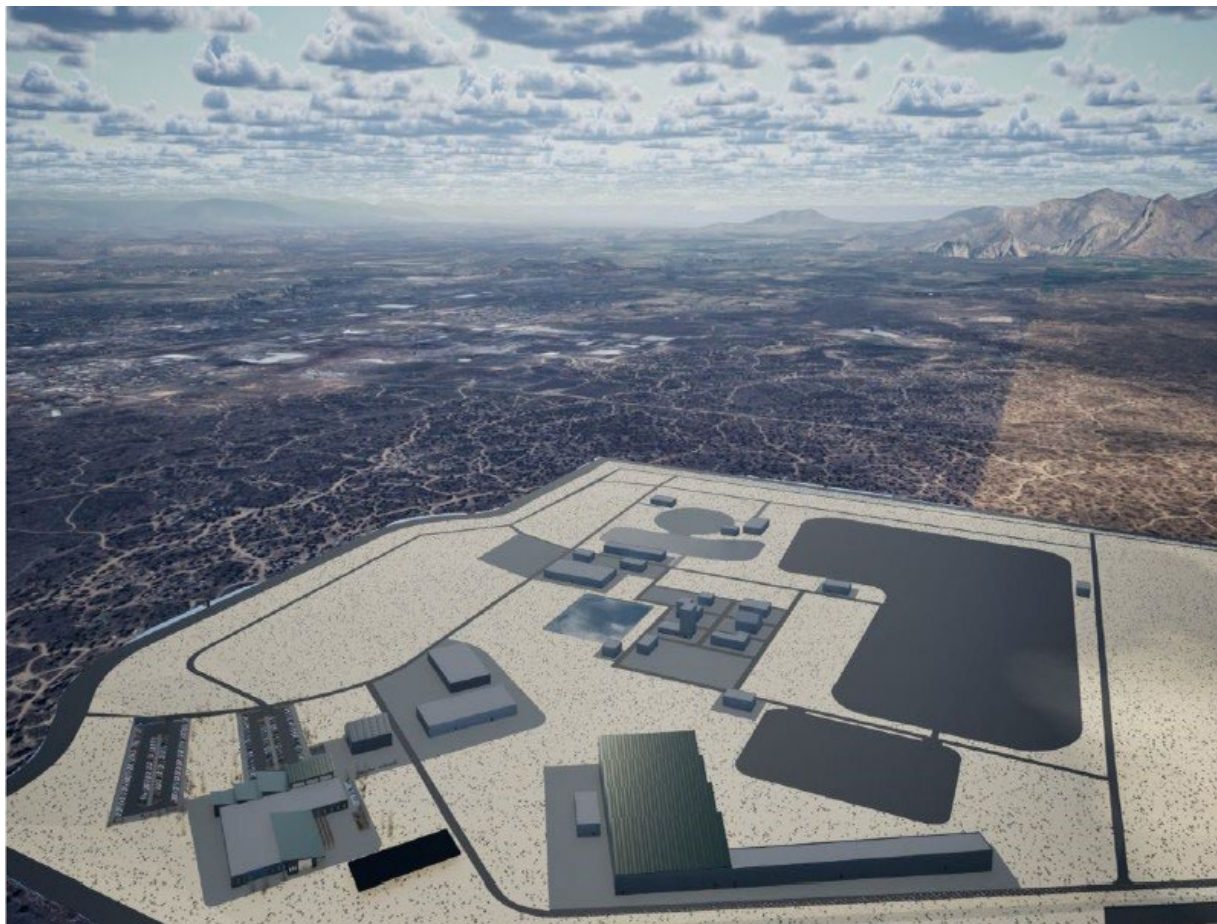


CORE3 - Phase 1



Scope of CORE3

Future Build



- High Bay/Indoor Drill & Training Space
- Covered Gun Range
- Urban Search & Rescue Prop
- Class A Burn Building; 2-Story
- Shoot House/Reconfigurable Maze
- Virtual De-Escalation Training
- Train Car Derailment & Rescue Prop
- Off-Road Driving Course
- Wildland Fire Training
- Vehicle Extrication Prop
- Fire Drafting Pit – Fire Truck Pump Certification
- Rescue – Confined Space & Trench Prop
- ARFF – Aircraft Rescue & Fire Fighting Prop
- Emergency Medical Technician Lab
- Roof Training Prop – Fire, SWAT/Rappelling, Smoke, etc.
- Emergency Supply Cache

CORE3 Partners



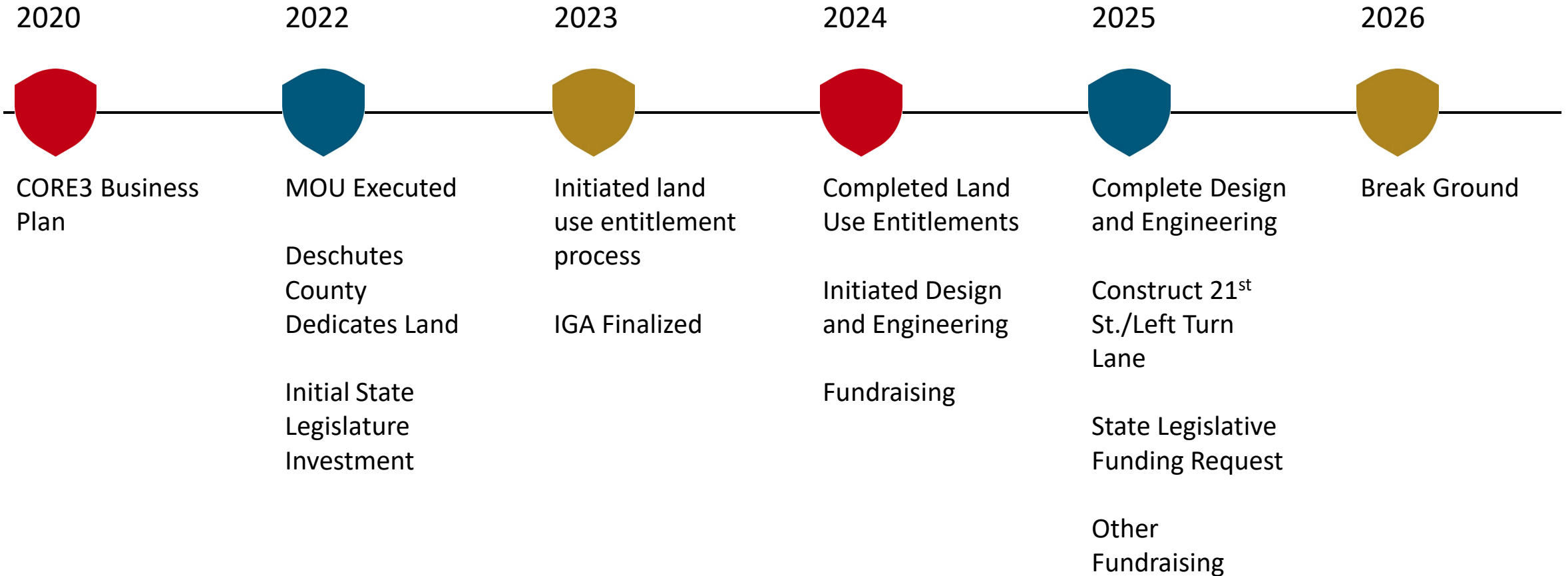
Partners & Participating Agencies

- Central Oregon Community College
- Central Oregon Fire Management Service
- Central Oregon Intergovernmental Council
- City of Bend Fire & Rescue
- City of Bend Police Department
- City of Madras
- City of Madras Police Department
- City of Redmond
- City of Redmond Airport
- City of Redmond Police Department
- Crook County
- Department of Public Safety Standards & Training
- Deschutes County
- Deschutes County 911
- Deschutes County Sheriff's Office
- Governor's Regional Solutions
- Jefferson County
- Jefferson County Fire & EMS
- Jefferson County Sheriff's Office
- Oregon Department of Corrections
- Oregon Department of Emergency Management
- Oregon Department of Forestry
- Oregon Department of Human Services Office of Resilience and Emergency Management
- Oregon Department of Transportation
- Oregon State Fire Marshal
- Oregon State Police
- Redmond Fire & Rescue
- Sisters-Camp Sherman Fire District

CORE3 Overview



Timeline – (after two decades of prior work and conversations)



CORE3 Funding

Funding & Support to Date



Local

- Dedication of Land Valued at \$14 Million
- Approximately \$1.2 Million in Project Development Costs to Date
- \$750,000 from the City of Redmond for 21st St.

State

- 2022 Legislative Session: \$9.5 Million
- DLCDC: \$50,000
- OSFM: \$500,000

Federal

- FEMA EOC Grants: \$1.75 Million towards design

CORE3 Funding

Use of Capital Funds to Date

Revenues:

- State Legislative Appropriation
- Congressionally Directed Spending
- OSFM
- City of Redmond

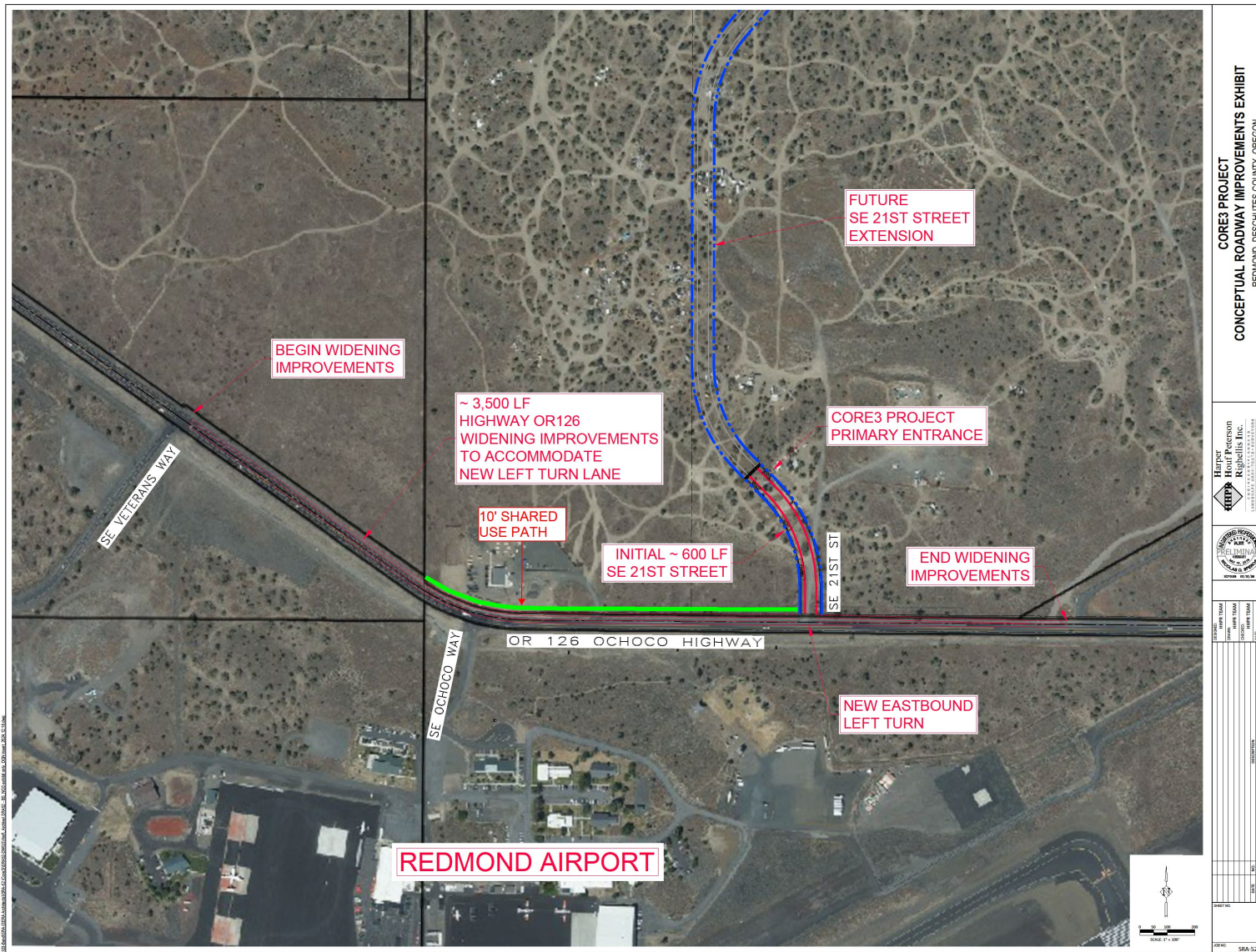
Total = \$13M

Committed Capital Expenses:

- D&E and Construction of 21st Street and Hwy 126 Left Turn Lane – and extension of all required utilities
- Phase 1 D&E
- Other Construction Related Costs (e.g. site prep, enviro remediation, construction management, etc.)

Total = \$13M

CORE3 2025 Infrastructure Investments



CORE3 Overview

Governance and Operations



Governance:

Build Interagency **ORS190** of Core Users and Operators – initiating now

Operations/Maintenance Revenue:

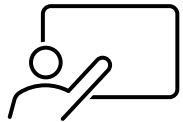
- “Super Users” Cost Share
- Long Term Contracts
- User Fees



CORE3 Bill: HB 3084



Acknowledges increasing wildfires, Cascadia, and other natural disasters.



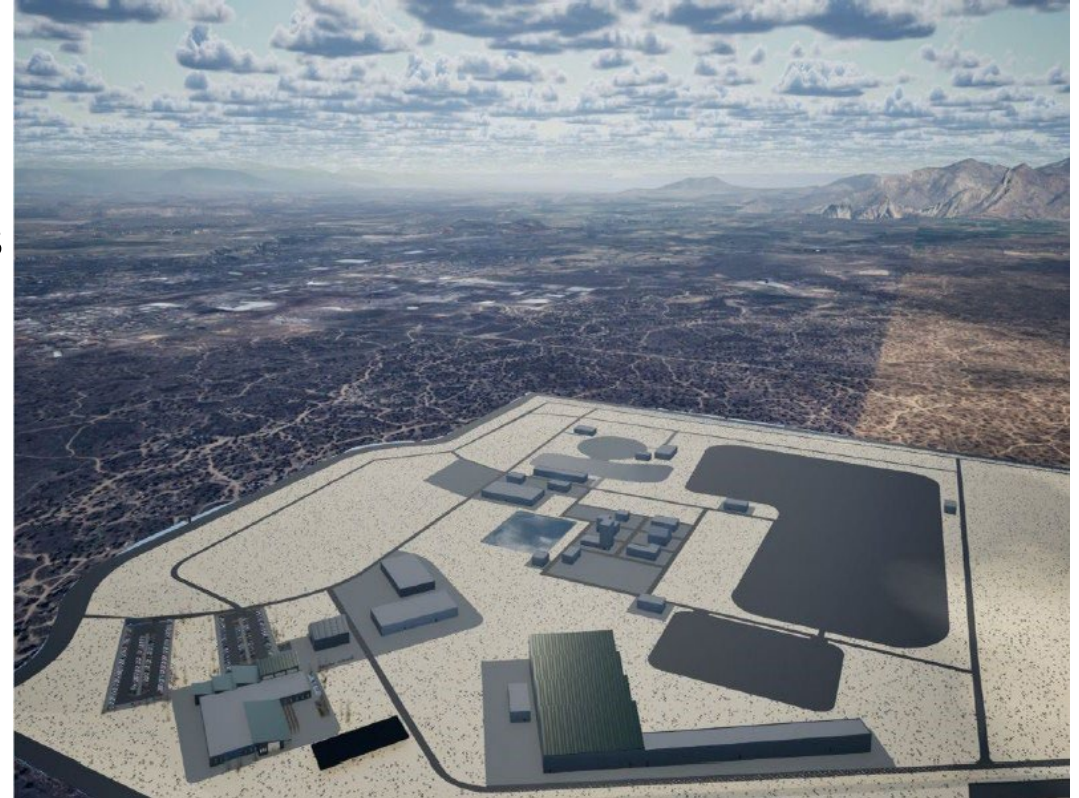
Acknowledges need for public safety training facilities in Central and Eastern Oregon.



Acknowledges that 10 state agencies are working with local agencies on CORE3.



Directs that the State ID CORE3 in overall emergency response plans.



Requests \$15.75M Towards Construction of CORE3

CORE3 Overview



Area of Interest	Agencies
Emergency Coordination Center	<ul style="list-style-type: none"> • Oregon Department of Emergency Management (OEM) • All state agencies that have a supportive or lead role in the state ESF plans
Training Facilities	<ul style="list-style-type: none"> • Department of Corrections (DOC) • Department of Human Services Office of Resilience & Emergency Management (DHS-OREM) • Department of Public Safety Standards and Training (DPSST) • Oregon Department of Transportation (ODOT) • Oregon Department of Forestry (ODF) • Oregon State Fire Marshal (OSFM) • Oregon State Police (OSP)
Caching Space for Supplies	<ul style="list-style-type: none"> • Oregon Health Authority (OHA) • Oregon State Fire Marshal (OSFM) • Department of Human Services Office of Resilience & Emergency Management
Continuation of State Government Functions	<ul style="list-style-type: none"> • Governor's Office • Oregon Department of Administrative Services

CORE3 Contacts



CORE3 Executive Council Chair

Commissioner Tony DeBone | tony.debone@deschutes.org

CORE3 Executive Council Vice-Chairs

Bend Police Chief Mike Krantz | mkrantz@bendoregon.gov

Jefferson County Fire & EMS Chief Jeff Blake | jblake@jcfire-ems.org

CORE3 Staff

COIC's CED Director Scott Aycok | scotta@coic.org

COIC's Resilience Planner Shelby Knight | sknight@coic.org

COIC's Program Coordinator Sommers Taylor | staylor@coic.org

Owner's Rep Wayne Powderly | wayne.powderly@cumming-group.com

Links

- Website: <https://core3center.org/>
- Flyover: https://www.youtube.com/watch?v=On14uoBs_q8

