

POIC

Rewriting Life Stories

Education and Workforce Center



portlandoic.org

Investing in Oregon's Future Workforce

A Whole-Community Approach to Education, Workforce, & Wellness

**POIC is committed to the success
of underserved youth, adults, and
families.**

- Employment & Training
- Education
- Community Safety
- Family & Wellness



Low Workforce Pipeline Numbers

- Oregon needs 5,300 more workers in trades to meet 2025 needs*
- **Immediate Action:**
 - **Appropriates \$5 million** from the General Fund to construct and operate the **Sunrise Campus Cultural Workforce Center**, a vital hub for workforce development in East Multnomah County
 - The Rockwood district is one of the most diverse and highest percentage of low-income neighborhoods in the state, with a **45% poverty rate**, over a dozen languages spoken, and more than **70% of students eligible for free or reduced lunch**



*Associated Builders and Contractors/ US Bureau of Labor Statistics

Impact of Senate Bill 720

- Ensuring Oregon's growing industries have access to well-trained, diverse talent while providing meaningful career opportunities to traditionally underserved communities
- **A Cultural and Workforce Hub - accessible on Transit**
- **POIC: Proven Results and Expertise**
- **Gresham's Investment**



Addressing Workforce Demands

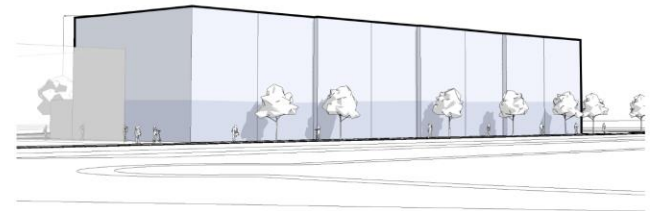
- Semiconductor Manufacturing
- Construction

Services

- Innovation Lab & Workforce Training
- Rosemary Anderson Prep
- Gymnasium
- Health Clinic
- Retail



Aerial View from Southeast



View from Southwest

Health Clinic and Innovation Lab



24 students per class

Mobile, modular furniture. S.O.R. for after hours use. could pair with innovation lab and health clinic.

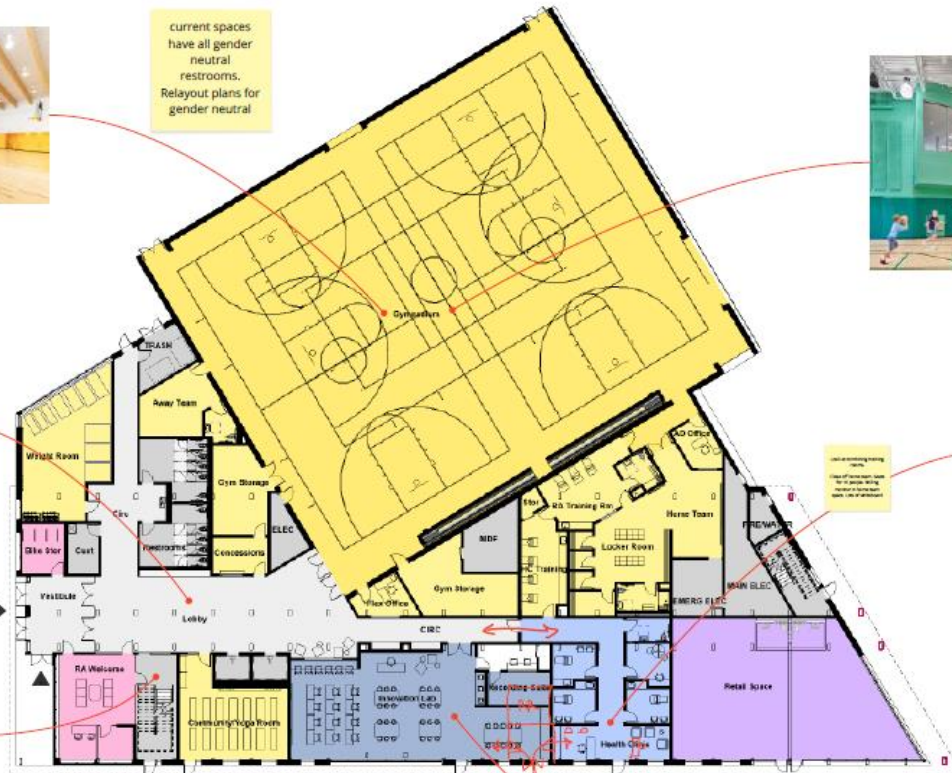


Preliminary Layouts

Level 1

RR: age ranges 6-10, could be without parents

current spaces have all gender neutral restrooms. Relayout plans for gender neutral



Level 1: existing building
Level 2: new building
Level 3: new building
Level 4: new building

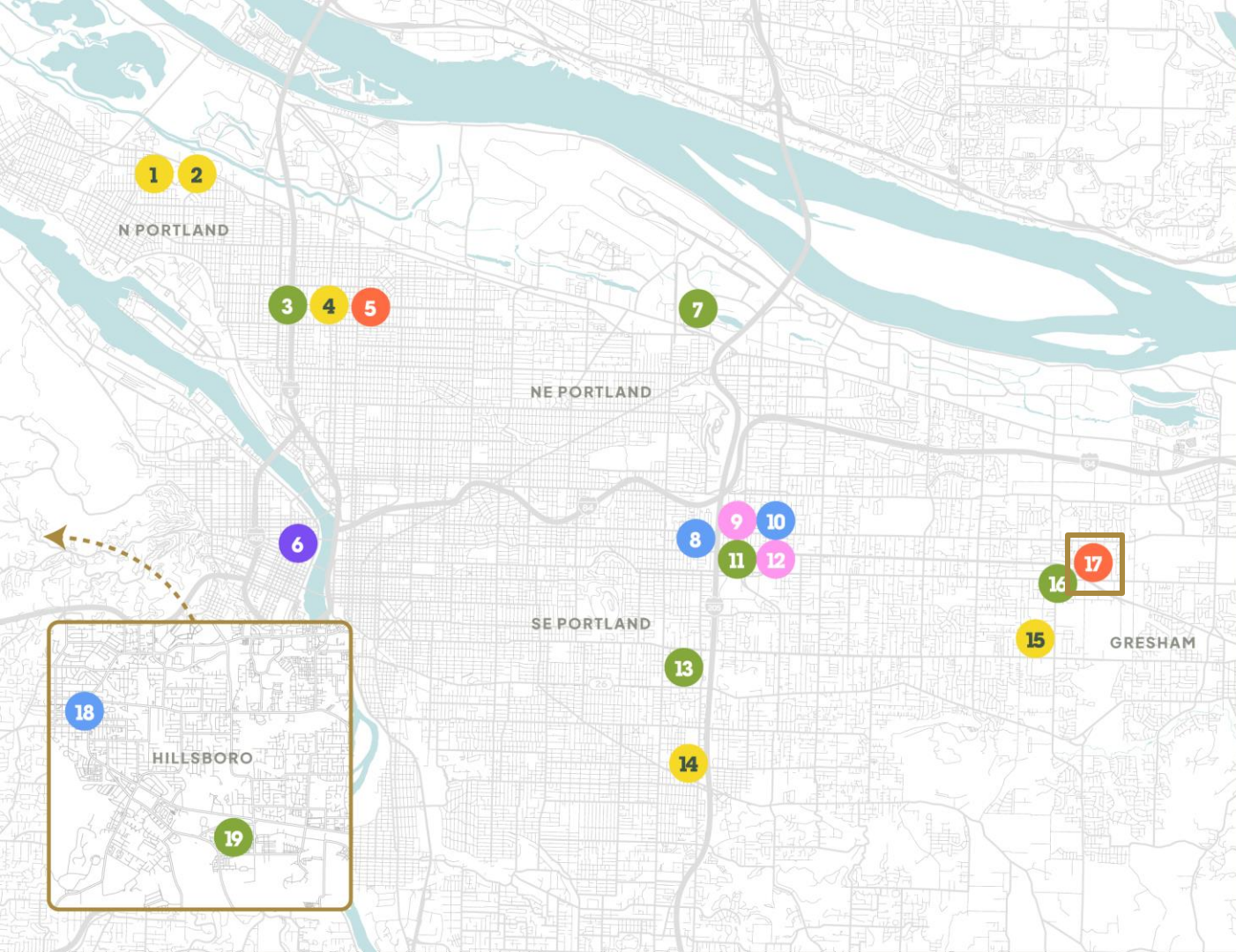
Innovation Lab/Health Clinic Security - vestibule off hallway
Health Clinic - corner entrance with the main lobby. The area is health clinic in the corner to lobby, rather than hallway.



Preliminary Layouts

Level 2





Education: Rosemary Anderson Prep

- 1. New Columbia Campus
- 2. Middle School Campus
- 4. North Campus
- 14. Lents Campus
- 15. East Campus

Employment & Training

- 3. Work Training Office 1
- 7. Construction Pre-Apprenticeship (Multnomah County)
- 11. Work Training Office 2
- 13. Re-Entry Office
- 16. POIC Kitchen
- 19. Construction Pre-Apprenticeship (Washington County)

Community Safety

- 6. Community Care Office

Family & Wellness

- 8. Youth Services Office
- 10. Community Healing Initiative Offices (Multnomah County)
- 18. Community Healing Initiative Offices (Washington County)

Special Projects

- 5. Albina Arts Center
- 17. Sunrise Center

Administrative

- 9. HR, Fiscal & Administrative Offices
- 12. Corporate Warehouse & IT

Proposed Schedule

Pre-Application Submission	Early 2025
100% Schematic Design Review & Approval	Late Spring 2025
50% Design Development Review & Approval	Late Summer 2025
Construction Drawings Review & Approval	Late Fall 2025
Closing Date	Late Spring 2026
Temporary Certificate of Occupancy	Early 2028

An aerial photograph of a city street intersection. The scene includes a multi-lane road with traffic lights, a white utility truck, a dark sedan, and a blue car. In the background, there are green trees, a building with blue accents, and distant mountains under a clear blue sky. A semi-transparent grey box is overlaid on the bottom left of the image, containing the text 'Thank You!' and social media icons.

Thank You!

POIC



portlandoic.org