

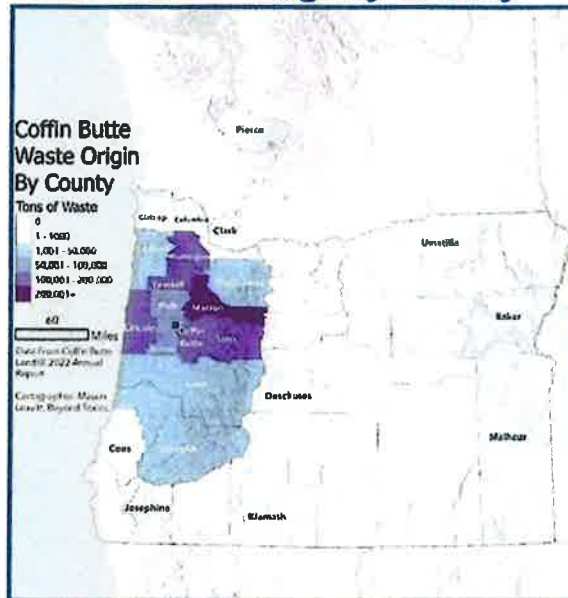
# HB 3794

## Ensuring Oregon's Waste Has a Responsible Future

### Overview

Coffin Butte Landfill is nearing capacity. Oregon hasn't approved a new landfill in over 30 years, and with the recent closure of the Covanta Waste Incinerator, our region faces an urgent waste management crisis.

### Coffin Butte Usage by County



### Who Uses Coffin Butte?

**859,205 residents of Oregon or over 20% of the population**

- Lincoln County 100% of annual MSW
- Tillamook County 100% of annual MSW
- Polk County 100% of annual MSW
- Benton County 100% of annual MSW
- Yamhill County 82.5% of annual MSW
- Linn County 70.8% of annual MSW
- Marion County 66% of annual MSW
- Clackamas County 22% of annual MSW
- Washington County 16.3% of annual MSW

Coffin Butte is not just used by residents of Benton County. In fact, Benton County residents contribute a small portion of total municipal solid waste.

**Coffin Butte Landfill:**  
Where does the waste come from?



Sources: 2021 Oregon Material Recovery and Waste Generation Rates Report, Oregon DEQ; Coffin Butte Landfill Annual Report 2021

### Coffin Butte's Reach



**Coffin Butte sits on 178 acres permitted for waste disposal. That's over 134 football fields!**

### Solution

HB 3794 establishes the Task Force on Municipal Solid Waste in the Willamette Valley, bringing together key stakeholders—including legislators, environmental experts, waste haulers, and local governments—to develop a regional plan for waste disposal. The task force will:

- ♦ Study and identify solutions for MSW disposal before Coffin Butte closes.
- ♦ Review and build upon Benton County's Regional Sustainable Materials Management Plan.
- ♦ Collaborate across state and local levels to ensure Oregon is prepared with long-term waste infrastructure.
- ♦ Deliver actionable recommendations to the legislature by December 2026.

**HB 3794 is about proactive planning—ensuring that Oregon doesn't face a waste crisis, but instead builds a sustainable, forward-thinking waste management system. Let's act now.**

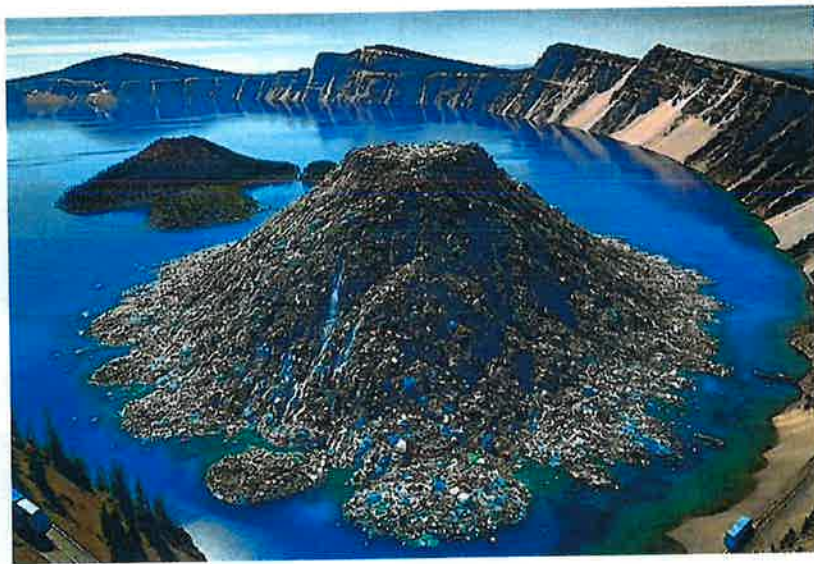
# HB 3794

Coffin Butte accepts 1.1 million tons of waste a year. We asked AI to help us visualize what that looks like.

---



Oregon State Capitol



Crater Lake National Park



Downtown Portland