



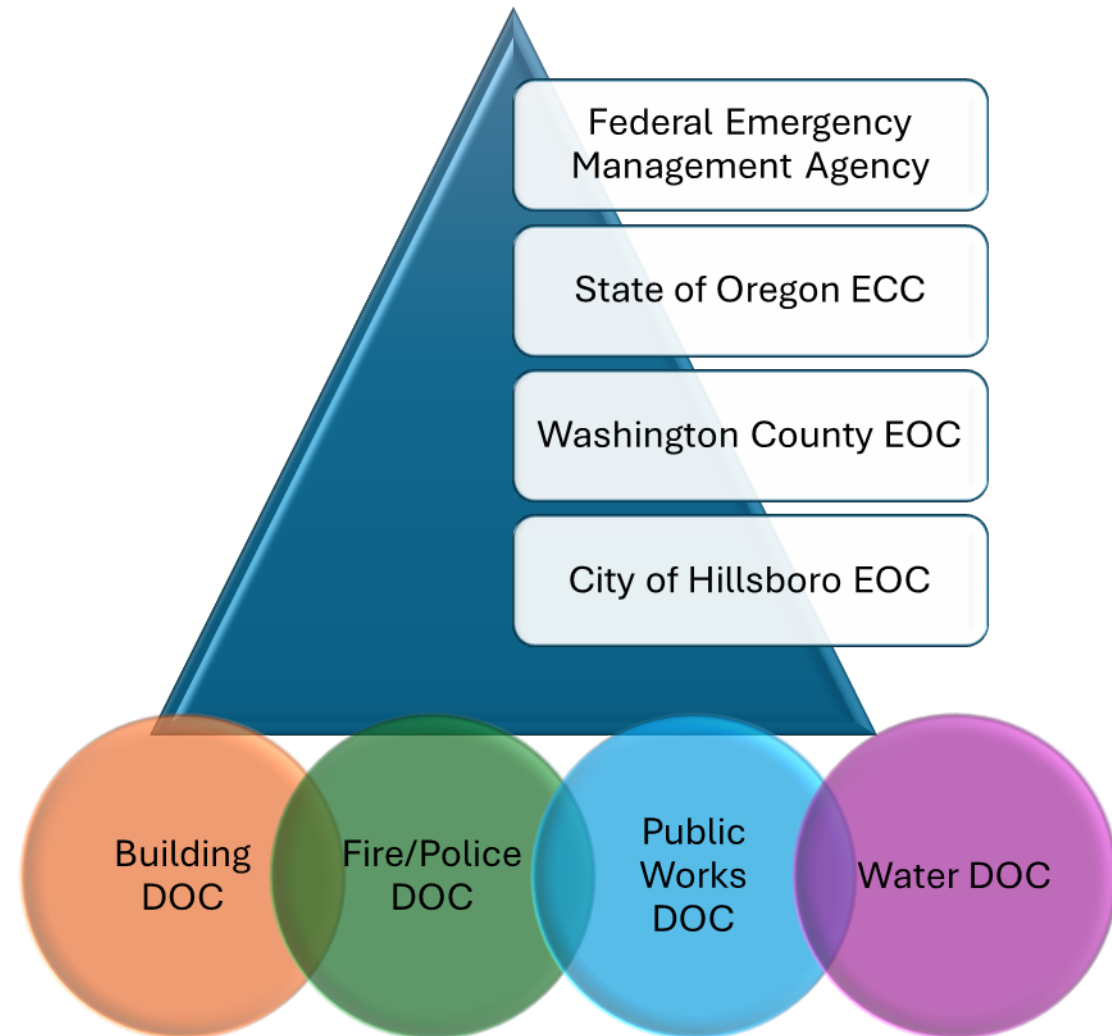
City of Hillsboro

Emergency Management Structure

Tammy Bryan
Emergency Program Manager



How will Hillsboro be structured in a large emergency?





What is a Department Operations Center (DOC)?

A Department Operations Center (DOC) is similar to an Emergency Operations Center (EOC) in the way it is set up, but it is designed to coordinate and manage operations in the field.

The following departments have a Department Operations Center, which are regularly trained and exercised.

Fire/Police

Public Works

Water

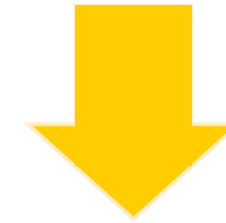
Building

DOCs open far more often than the EOC, due to the events we most commonly face in Hillsboro.

When is the EOC activated?

The EOC could be activated when some or all of the following triggers occur:

- an event has exceeded the capabilities of the Department Operations Centers (DOCs)
- an event has extended into multiple operational periods
- the City has declared a State of Emergency



Events that could possibly trigger EOC activation:

- Earthquake
- Major Winter Storm/Blizzard
- Widespread Flooding
- Pandemic

- In an event, should the response needs exceed the City's capability, we would reach out to Washington County Emergency Management or their EOC, if activated.
- Training
- Exercises
- Plan updates:
 - Emergency Operations Plan (EOP): Where possible, we conduct planning efforts together to ensure continuity, alignment, and understanding.
 - Natural Hazard Mitigation Plan (NHMP): Updating this plan together allows for alignment where possible, awareness, and shared technical support and experience among participants.
- Events
 - Extreme Heat
 - Extreme Cold
 - Winter Weather