



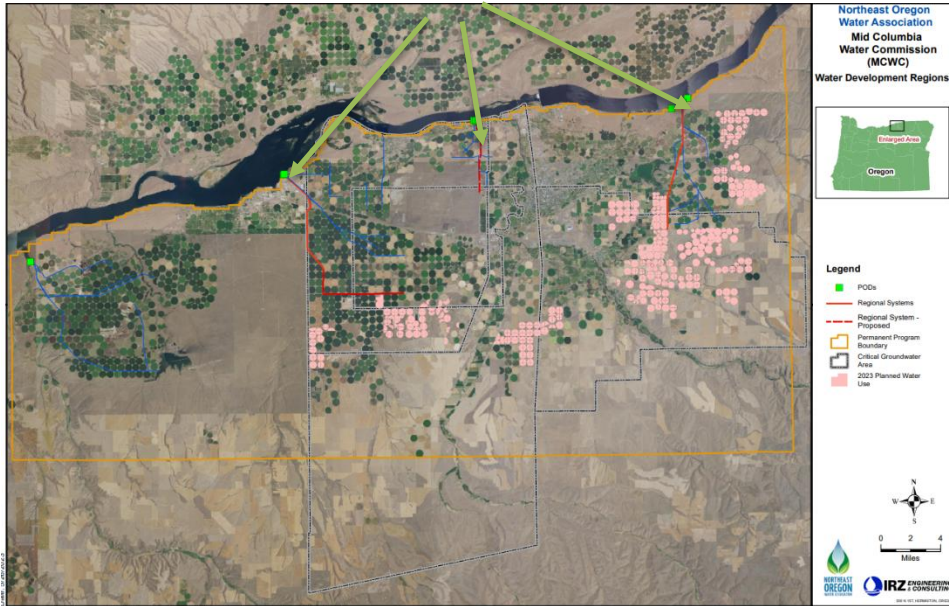
NORTHEAST OREGON

WATER ASSOCIATION

LIFE DEPENDS ON WATER, WE DEPEND ON YOU.

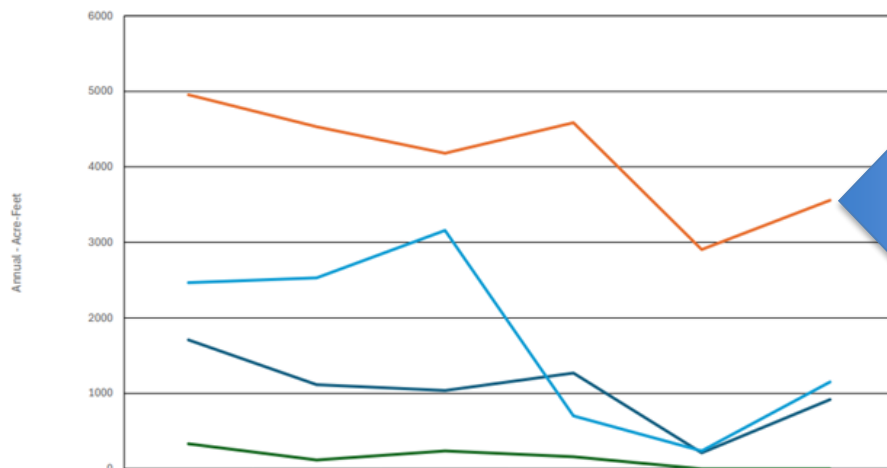
Replacing Basalt Groundwater Pumping

>\$200 Million invested in 10 years
and \$1.2 million annual mitigation budget



Ag saving potable groundwater

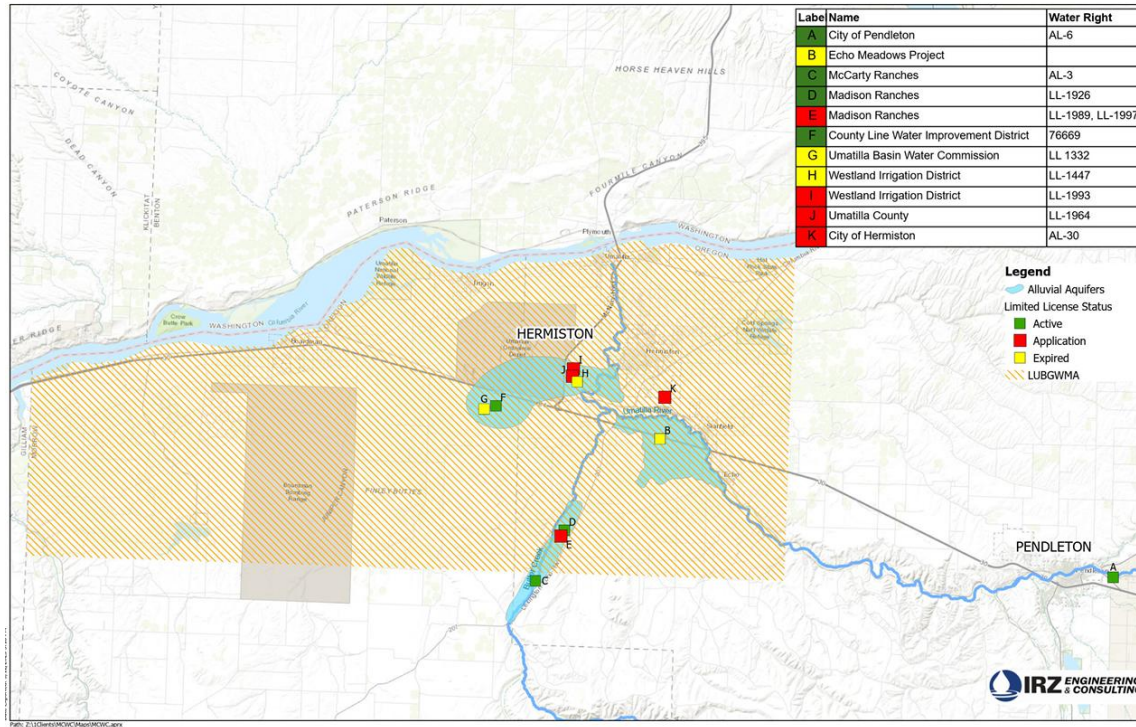
Summary of Growers with Mitigation Water to farm



Final Steps to Long-term Sustainability (Need State Memorialization)

- Memorialize the Mid-Columbia Water Commission and Districts into one operating unit
- Secure permanent mitigation and secure permanent accounting system
 - Note: Need 150,000 acre-feet which is less than $\frac{1}{2}$ of what WA has developed in the last decade
- Keep testing recharge and develop groundwater savings and banking program

Aquifer Recharge (Quantity AND Quality)



Recharge works
for more than just
quantity

Table 1. Nitrate Concentrations in the Ordance Gravel Aquifer (Data from 2017).

Monitoring Well ID	Background (i.e., Pre-Recharge)	Post-Recharge	Percent Reduction
UMAT 2374	6.5 mg/L	5.0 mg/L	30.0%
UMAT 55806	55 mg/L	25 mg/L	120.0%
UMAT 57545	8.2 mg/L	4.6 mg/L	78.3%

Notes

mg/L = milligrams per liter

¹ Limited License No. 1447.

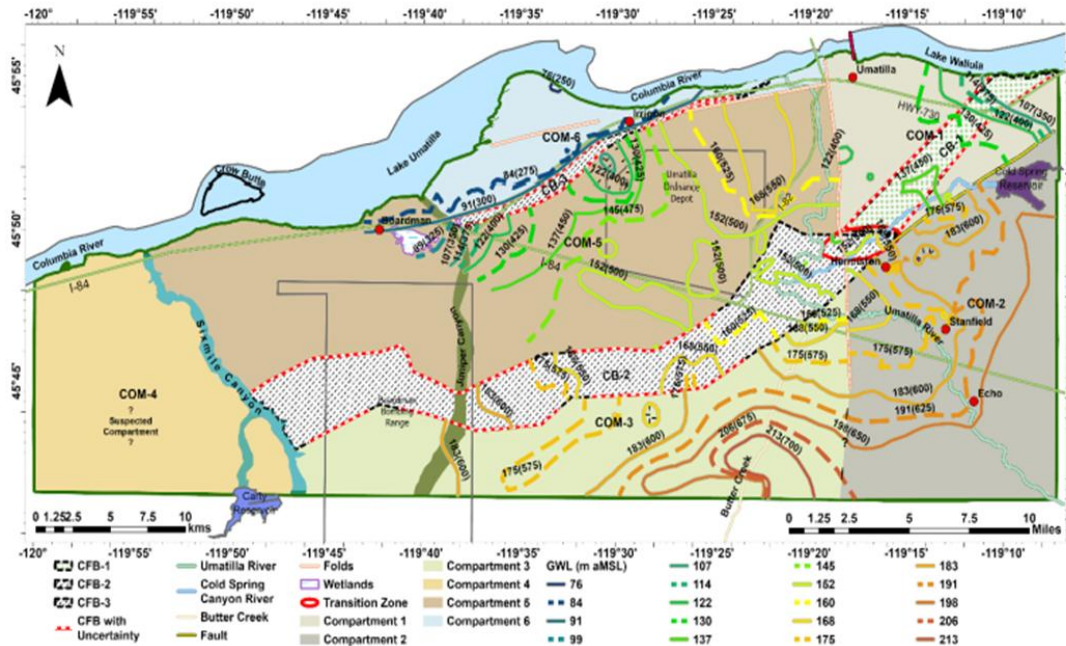
² WID's source water is the Umatilla River. During AR testing in 2017, nitrate concentrations in source water ranged from 0.3 mg/L to 0.6 mg/L (N=3 samples).

Trust in and memorialization of the results, and in the science is KEY to everything

Final Closure Report: Lower Umatilla Basin Groundwater Management Area: Nitrates Research, Data, and Information Network 2024

Peer Reviewed
OSU Dataset
Confirming
Compartments
not one big lake

NOWA/OEC
MOU
(2019)



MISSION: The aforementioned partnership has been established with the following intended mission in mind:

- **Groundwater Quantity:** Stabilize and recover groundwater static levels in the basalt and alluvial aquifers of four designated Critical Groundwater Areas in the Lower Umatilla Basin to ensure long-term conjunctive water supply certainty to the region's economic and ecological needs.
- **Groundwater Quality:** To reduce nitrate/nitrogen concentrations in the Lower Umatilla Basin Groundwater Management Area (LUBGWMA) to a point where de-designation of the LUBGWMA, or hydraulically connected sub-areas of the LUBGWMA, is possible.



Contact Information

J.R. Cook, Director

MAILING: P.O. Box 1026, Pendleton, Oregon
97801

PHONE: 541~969~8026

EMAIL: JRCOOK@NORTHEASTOREGONWATER.ORG

WEB: NORTHEASTOREGONWATER.ORG