

The seal of the Criminal Justice Commission, State of Oregon, is a large, faint, circular emblem in the background. It features a central illustration of a classical building with a pediment and columns, topped with a flag. The words "CRIMINAL JUSTICE COMMISSION" are arched across the top, and "STATE OF OREGON" is arched across the bottom.

Behavioral Health Deflection Programs

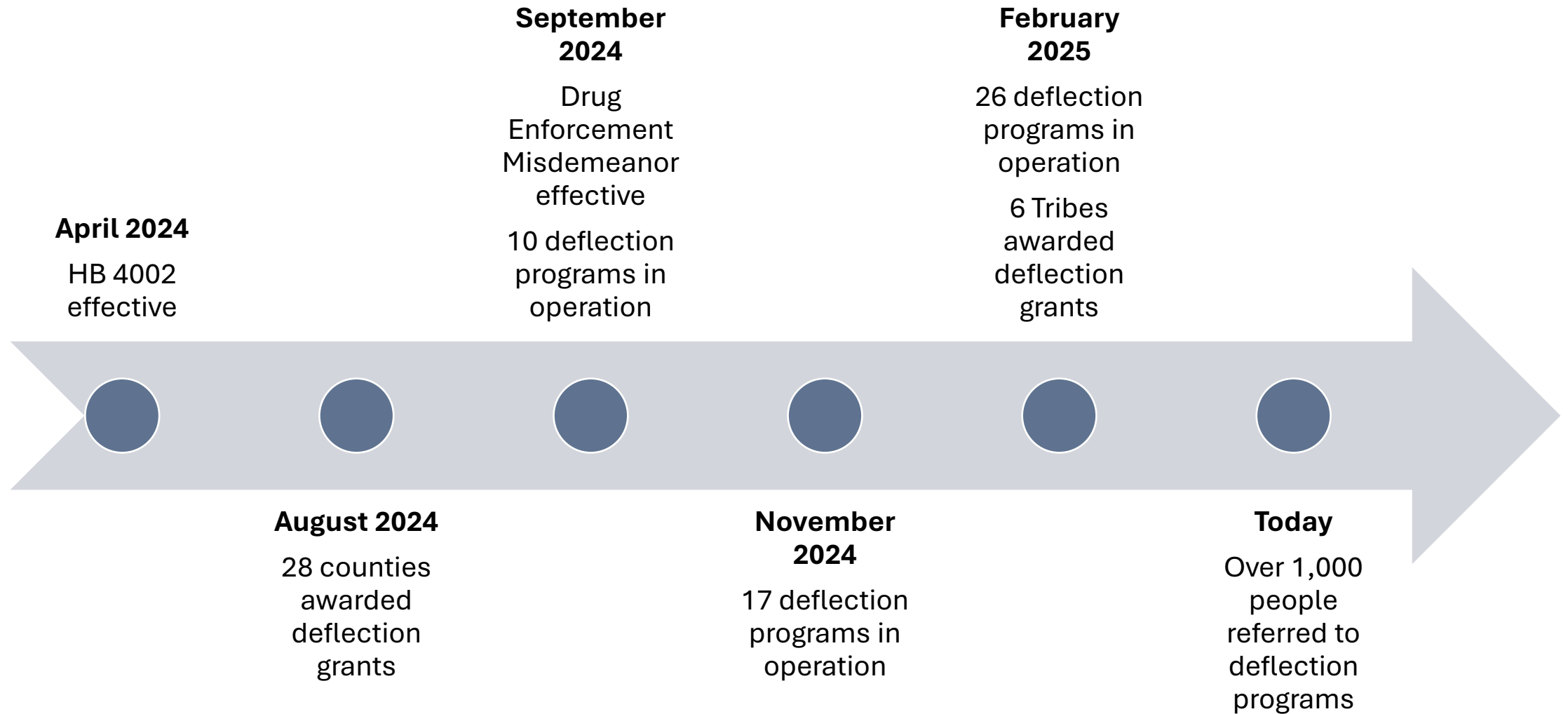
Joint Ways and Means Public Safety Subcommittee

April 30, 2025

Kelly Officer - Research Director

Ryan Keck - Interim Director

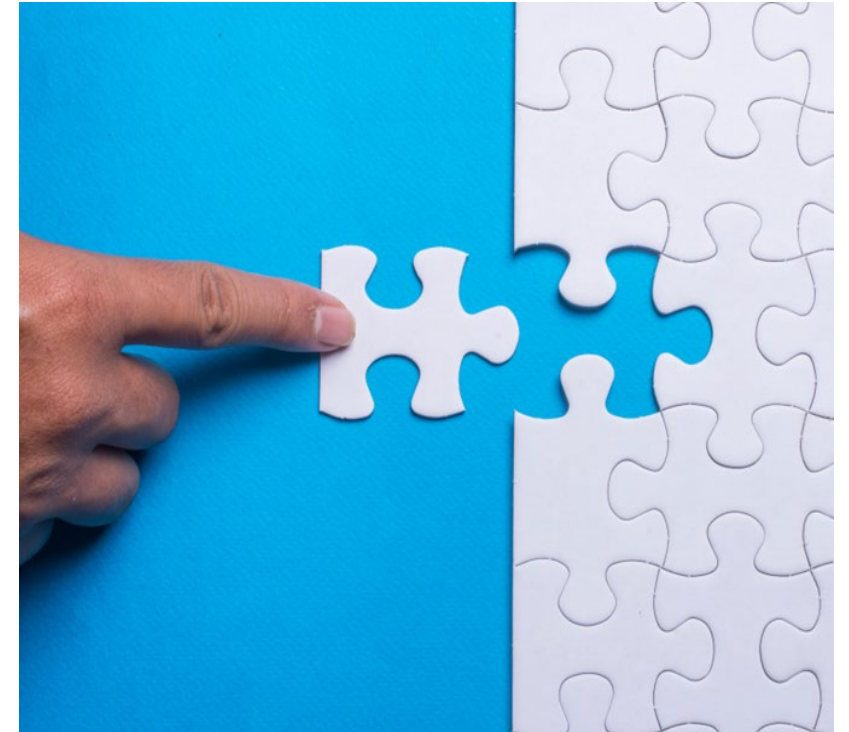
Deflection Program Timeline



BHD Grant Requirements

HB 4002 (2024)

- Provided each recipient flexibility to develop and implement programming to address local priorities, dynamics and resources.
- Required partnerships between (at minimum):
 - District attorney;
 - Law enforcement agency;
 - Community mental health program; and
 - Provider from a Behavioral Health Resource Network.
- Required the establishment of a program coordinator.
- Required tracking and reporting data.



2024 Deflection Program Funding

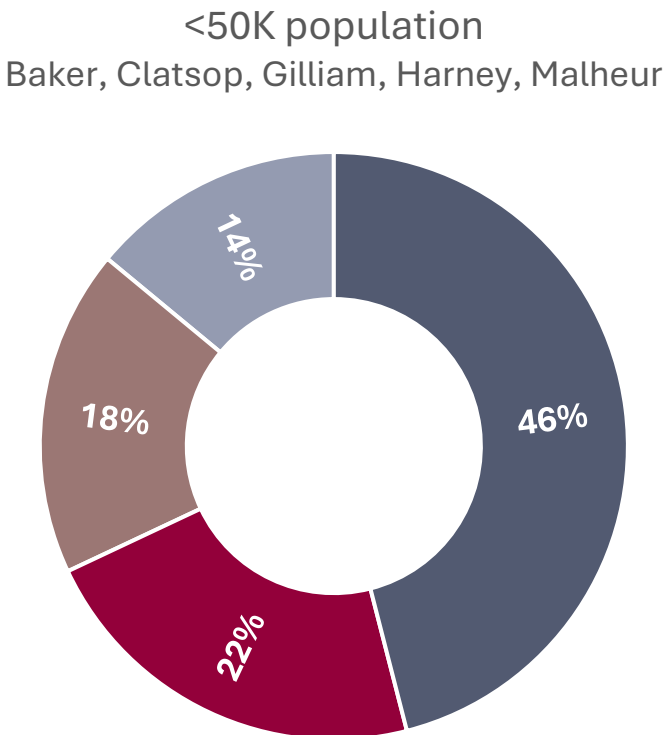
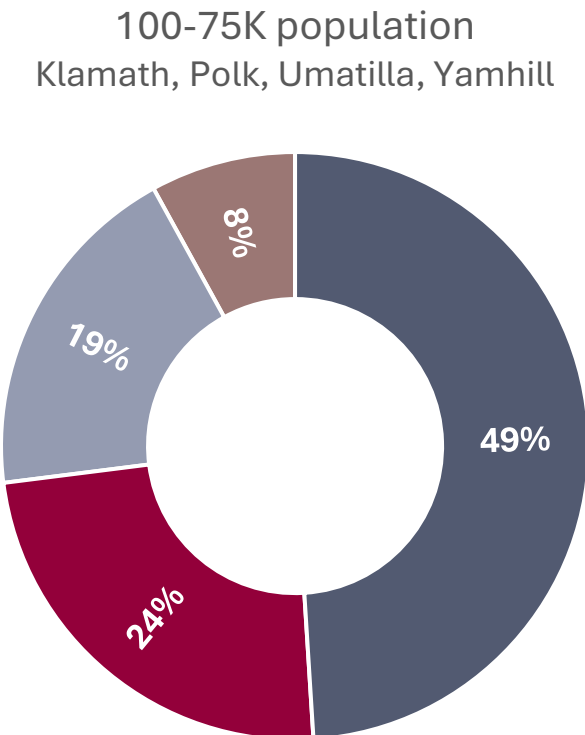
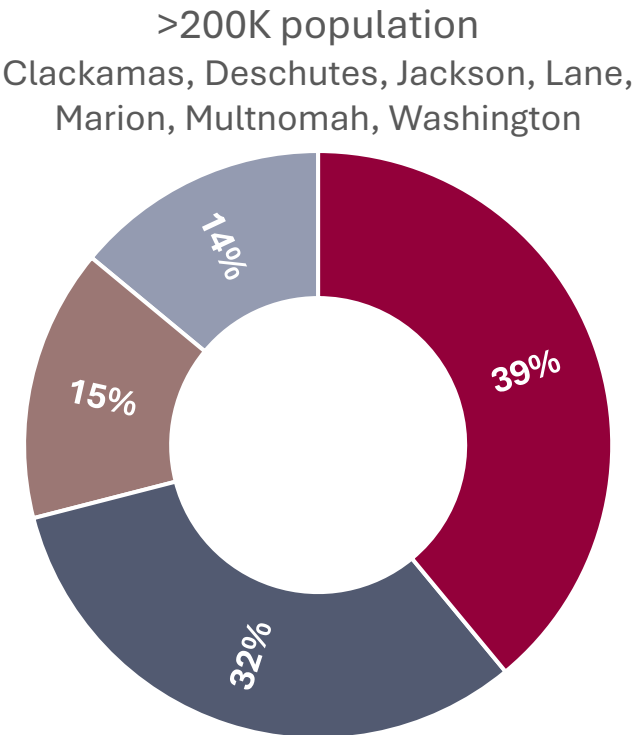
- The Behavioral Health Deflection (BHD) grant program was initially capitalized with \$20,708,200 in April 2024.
- Initial funding intended for one year
 - \$2,070,824 awarded to tribal governments
 - \$18,487,405 awarded to counties
- 90% of county awards assessed as ongoing operational costs
- 10% of county awards identified as one-time or short-term expenses re: program implementation

2024 BHD Grant Awards to Counties	
Project Expenses	Amount
Program Operations	\$16,590,431
Personnel	\$9,325,998
<i>Program coordination</i>	\$5,349,547
<i>Case management</i>	\$3,976,451
Direct services (case management, peer support)	\$2,432,125
Client stability (first aid, food, shelter, transportation)	\$2,392,092
Administrative costs, equipment & supplies	\$2,440,216
Program Implementation	\$1,896,974
Capital improvements	\$770,969
Training & travel	\$466,506
Equipment & supplies	\$447,330
Administrative costs	\$212,169
Total	\$18,487,405

Breakdown of Operational Costs

Counties in Operation for 6+ Months

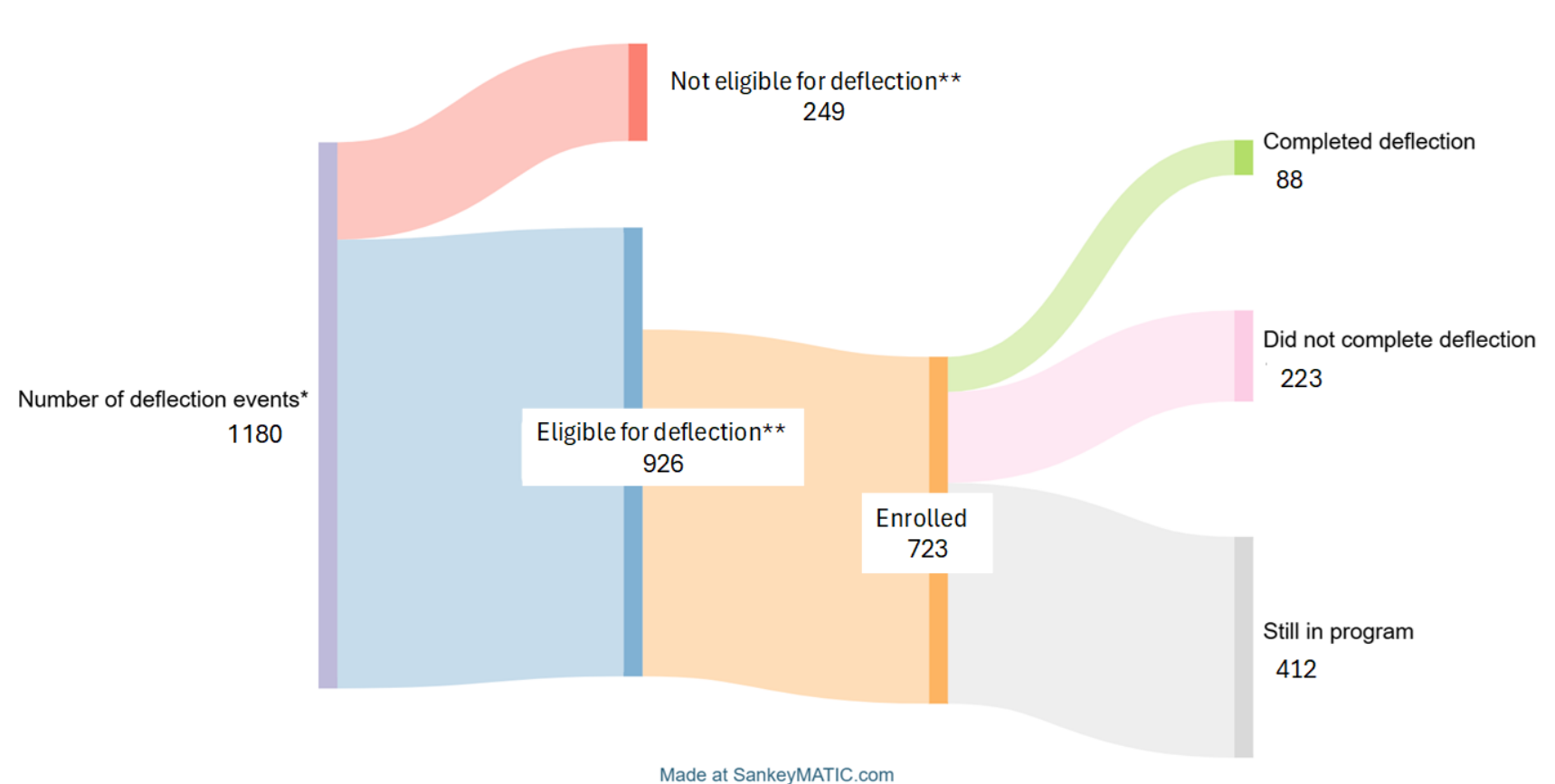
- **Coordination:** program oversight, eligibility review, data tracking, partnerships
- **Case Management:** warm handoffs, client outreach, screening, service enrollment, peer support
- **Client Stability:** short-term housing/shelter, first aid, food, clothing, transportation, identification
- **Other:** administrative costs, equipment, supplies, training/travel



Deflection Data Update

As of April 17, 2025

- Deflection counties must report deflection data to the CJC via the REDCap data system.
 - REDCap is maintained by OHSU/PSU SPH
 - Grantees are expected to report monthly.
 - It is important to note that programs have different start dates.
- 1,180 referrals have been made to deflection statewide for 1,118 people.



*1118 individuals had at least 1 deflection event recorded. 6 individuals were referred in 2 counties. Of the 1180 total deflection events, 2 individuals had 4 deflection events recorded, 6 had 3 events recorded, and 44 had 2 events recorded.

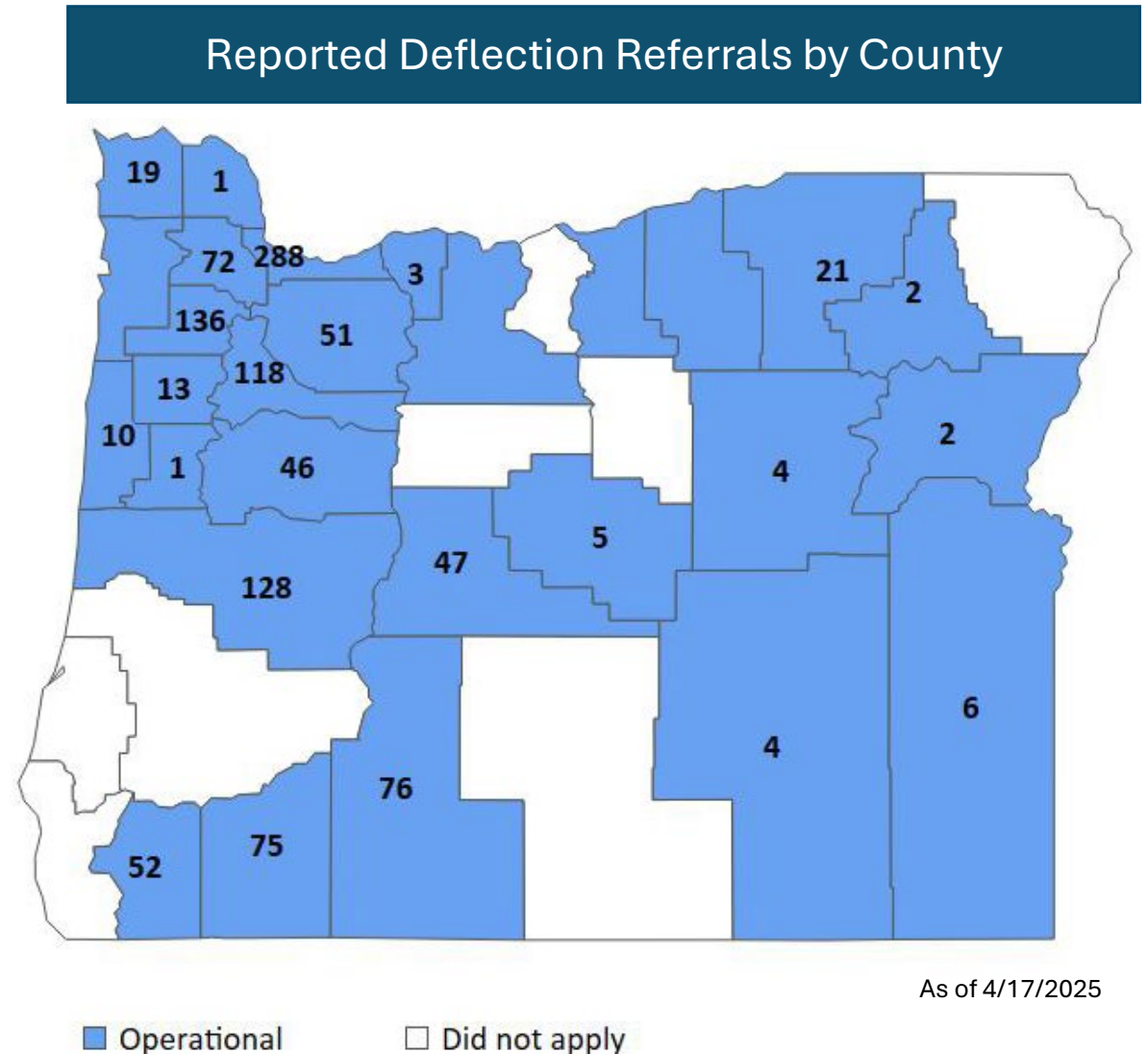
**Eligibility determinations were recorded for 1175 deflections (926 eligible, 249 ineligible).



SCHOOL OF
PUBLIC HEALTH

Deflection Referrals By County

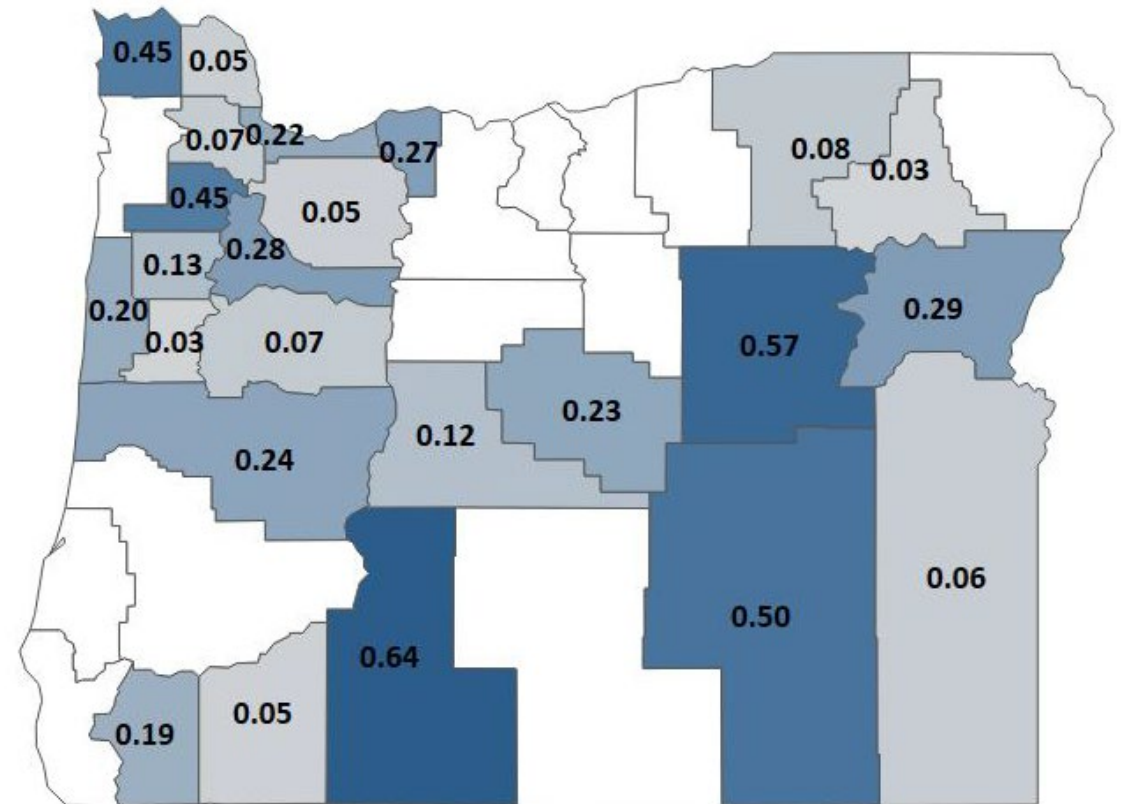
- Counties must report deflection data to the CJC via the REDCap data system
 - REDCap is maintained by OHSU/PSU SPH
 - Grantees are expected to report monthly
 - It is important to note that programs have different start dates
- Counties with the most referrals to date:
 - Multnomah (288)
 - Yamhill (136)
 - Lane (128)
 - Marion (118)



Deflection Referrals Per Arrest with PCS

- For context, county referrals are displayed as a rate per arrest with PCS charges
 - Arrests can have other charges
 - Arrests may not result in criminal charges
- Counties with highest referral rates compared to arrests with PCS charges:
 - Klamath
 - Grant
 - Harney
 - Yamhill
 - Clatsop
- Rates may be influenced by:
 - Referral pathways
 - Qualifying criteria
 - County deflection resources

Reported Deflection Referrals Per Arrest with PCS



Note: A value of 1 would mean every arrest with PCS resulted in a deflection referral. A value of 0.5 would mean every other arrest with PCS resulted in a deflection referral.

As of 4/17/2025

Deflection Best Practices Moving Forward

Program Eligibility

Broadening eligibility beyond drug possession crimes extends program reach.

- Only five county programs currently limit eligibility to PCS only
- 64% of disqualifications are for other local criteria such as history, supervision, residency

Deflection Pathways

Operating multiple pathways to deflection extends program reach.

- Two-thirds of county programs indicate plans to accept social referrals (no formal charges)

Handoff to Program

Utilizing warm handoffs, or outreach as soon as possible, increases deflection enrollment.

- 49% of referrals did not include a warm handoff
- Most counties report inadequate staffing to facilitate warm handoffs 24/7



SCHOOL OF
PUBLIC HEALTH

Best Practices Report available at Oregon.gov/CJC



Questions?



Contact:



Feedback?

Kelly Officer - Research Director
kelly.officer@cjc.oregon.gov

Ryan Keck - Interim Director
ryan.keck@cjc.oregon.gov