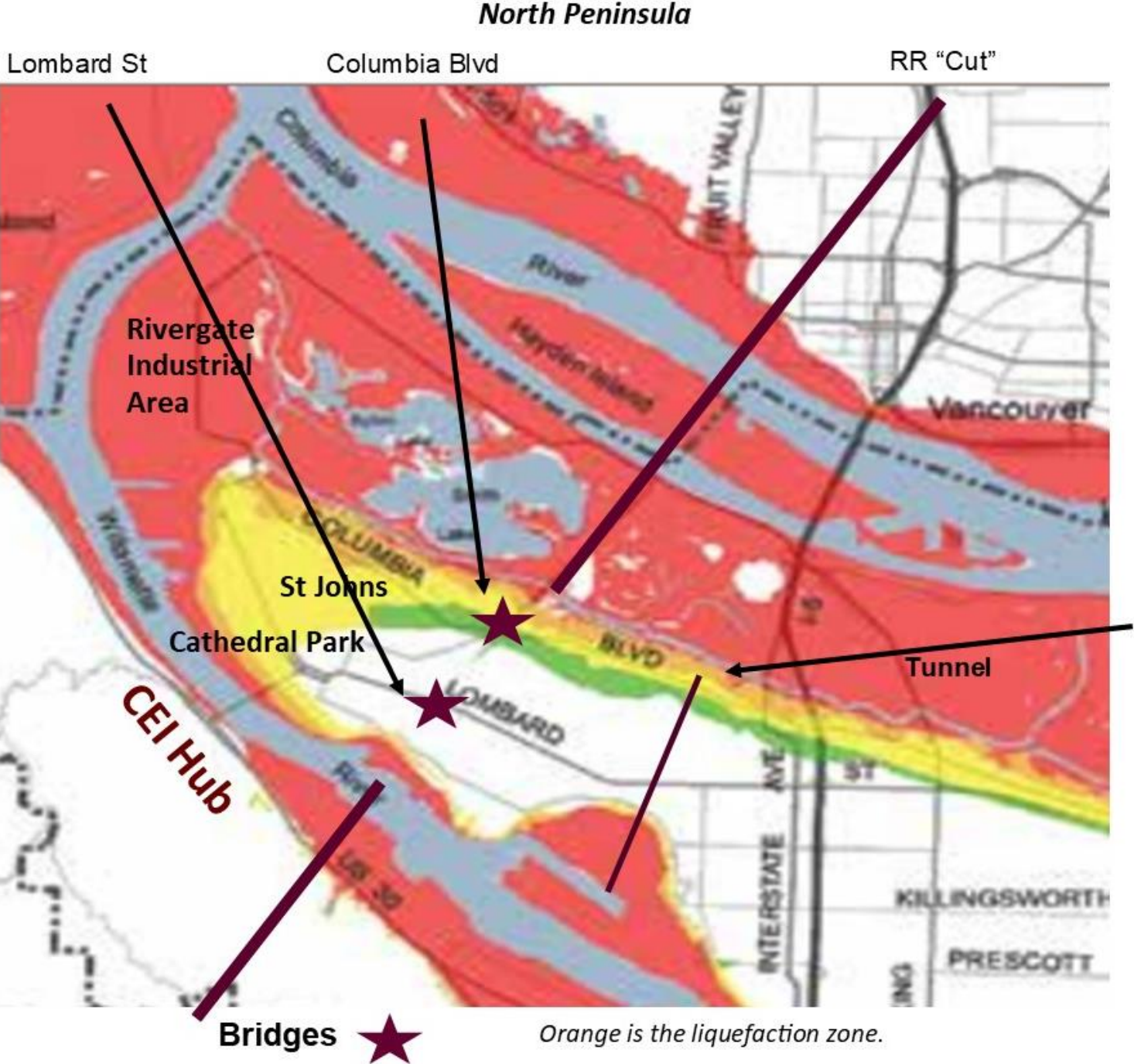


Testimony HB 2749  
Donna L Cohen  
4/14/25





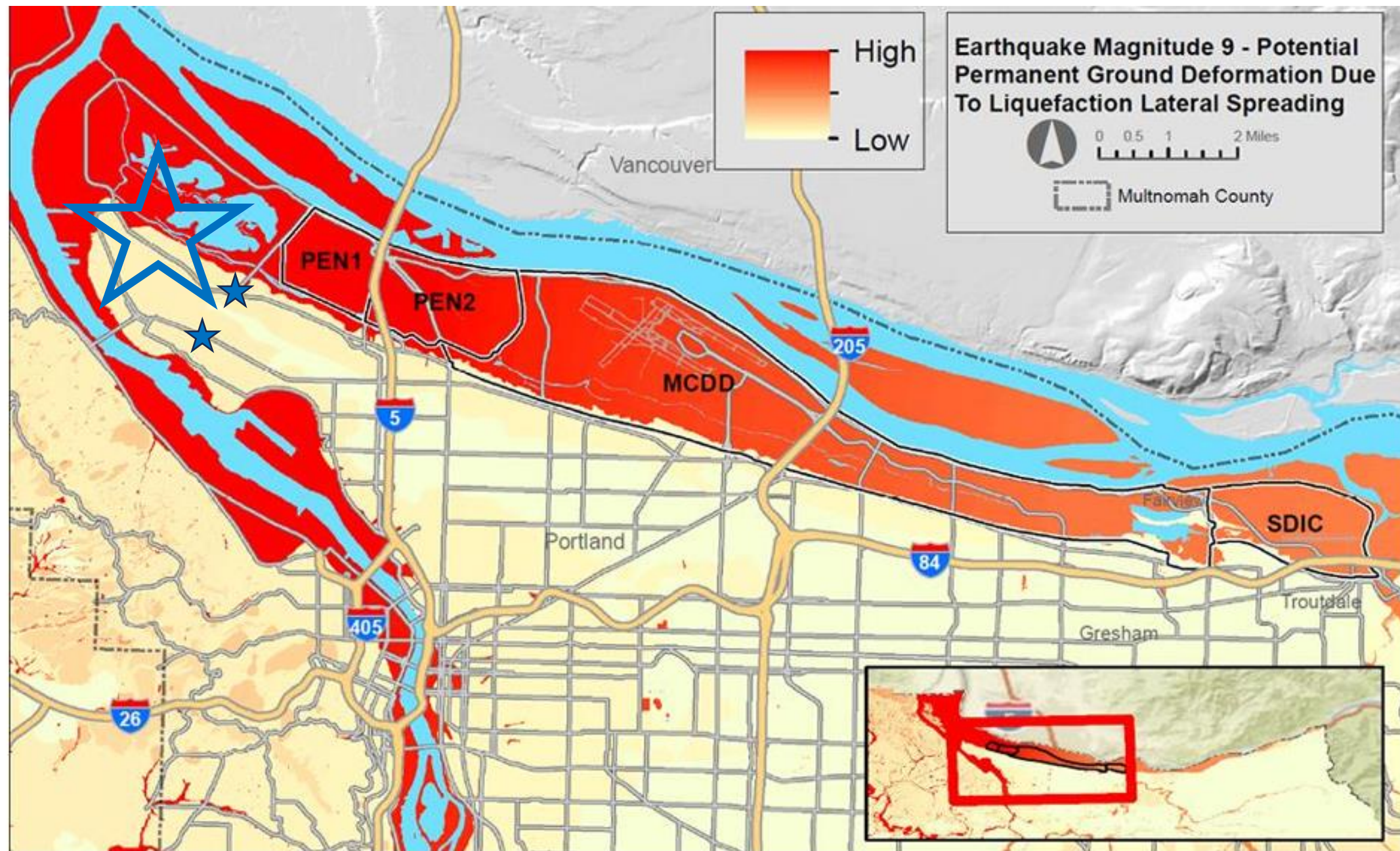


Figure 184 - Map of potential impacts in the Districts from a magnitude 9.0 Cascadia Subduction Zone earthquake.



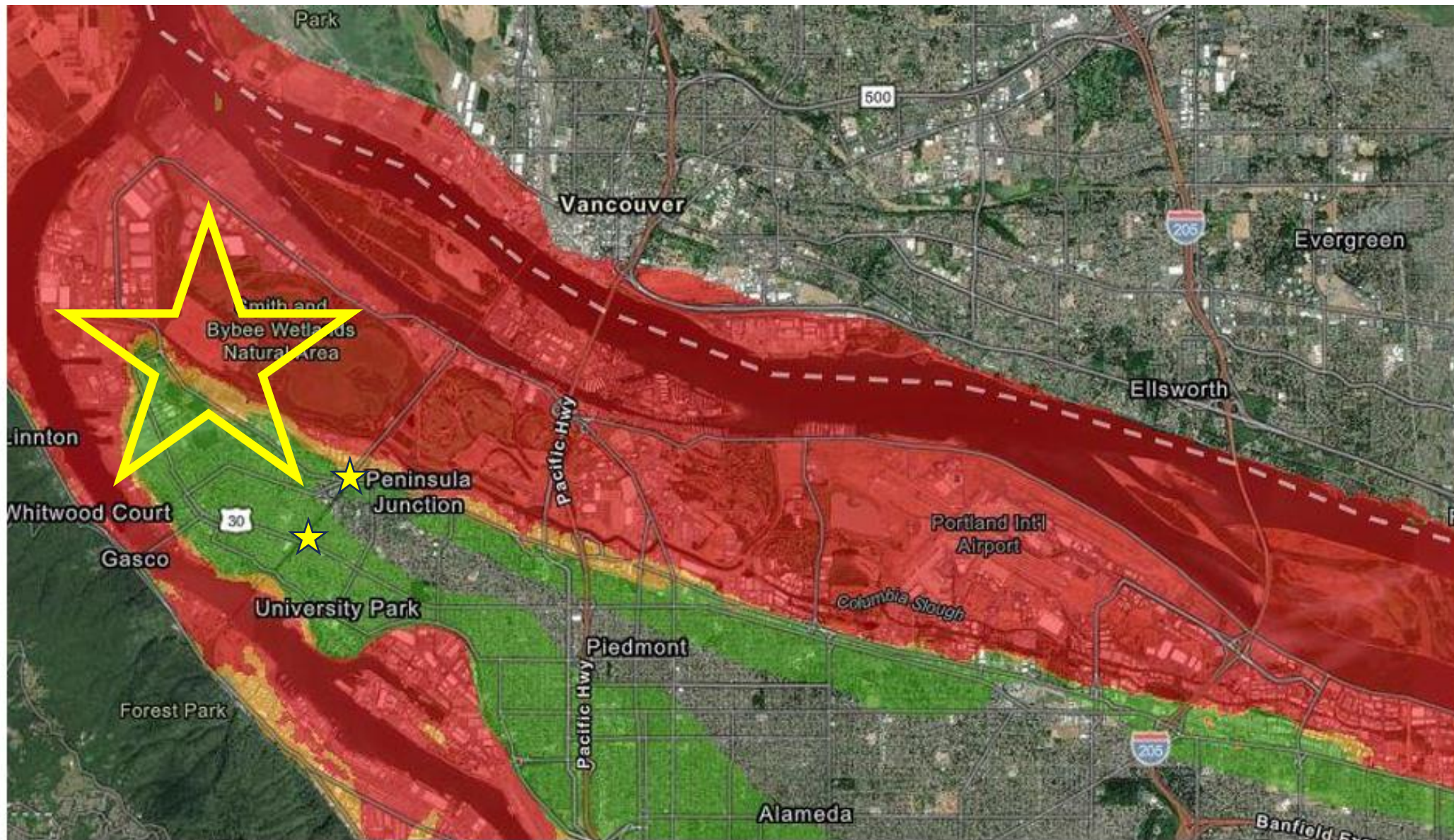


Figure 196 - Map showing soil **liquefaction** risk at the Port of Portland's critical community assets. Areas in red, which include the Portland International Airport and Terminal 6, have high risk of soil **liquefaction**. Map from DOGAMI



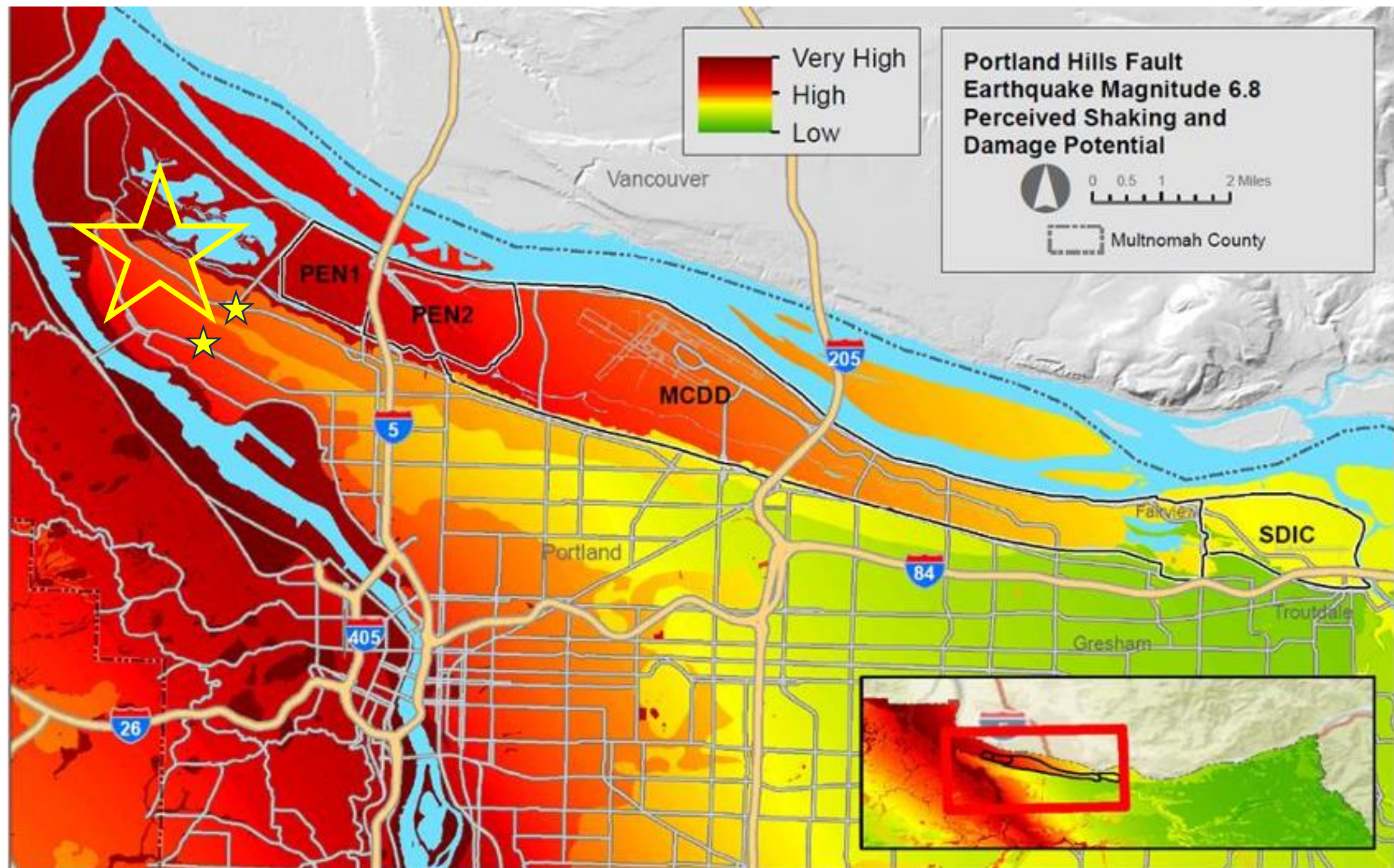


Figure 185 - Map of potential impacts in the Districts from a magnitude 6.8 Portland Hills Fault earthquake.