

# Aquatic Invasive Species Prevention and Response

April 15, 2025: Joint Ways and Means Subcommittee on Natural  
Resources



Photo Credit: Mussel, Golden -  
Alberta Invasive Species Council

Quagga Mussels

3 Species of  
concern

Zebra Mussels

New Golden Mussels



## Biological

- Food Web Disruption
- Blue Green Algae
- Water Clarity

## Recreational

- Fouled Engines
- Damage to Docks
- Increased Inspections
- Sharp Shells on Beaches

# Expected impacts to Oregon

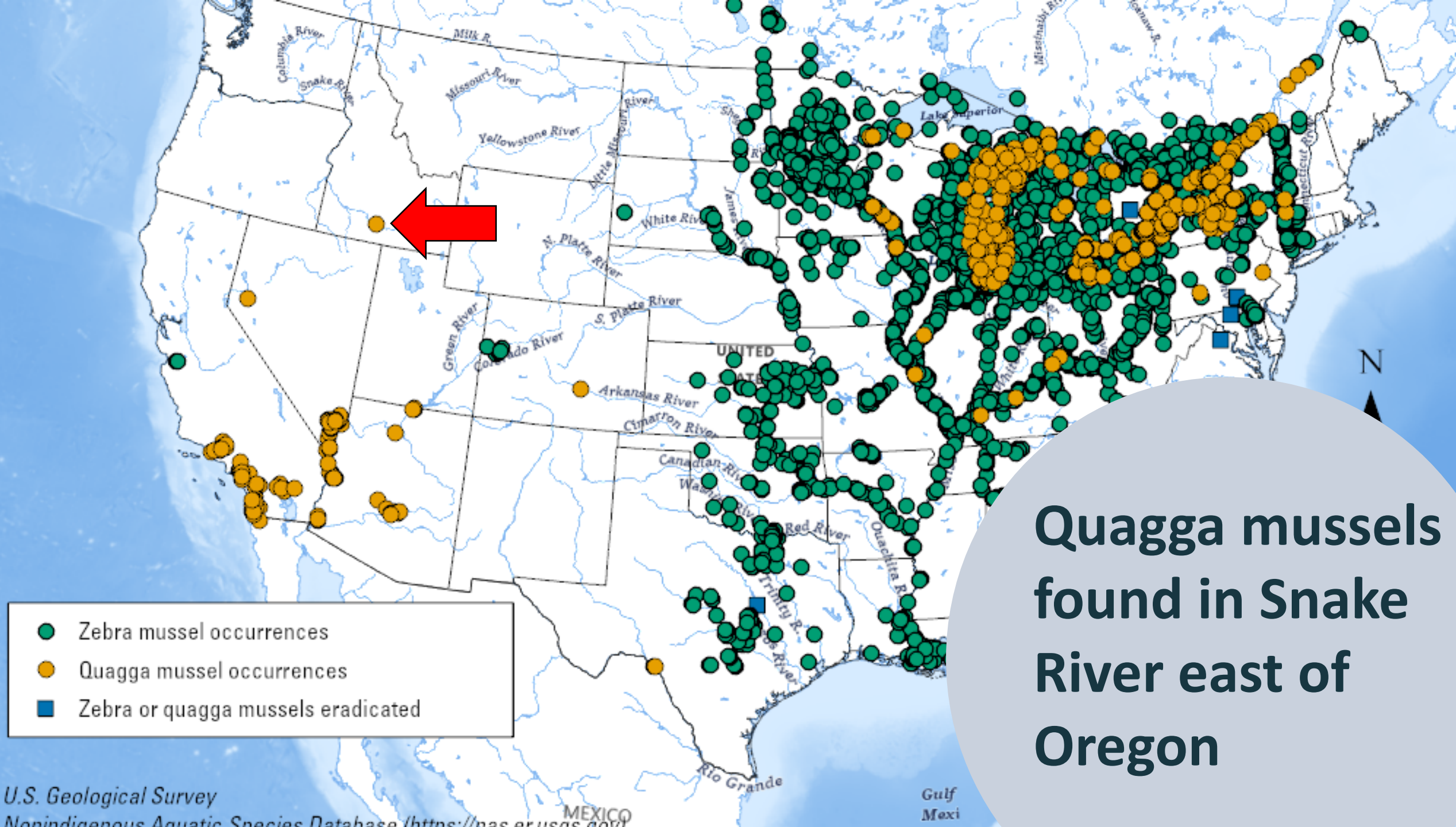
## Infrastructure

- Hydroelectric Dams
- Irrigation Systems
- Hatcheries
- Fish passage

## Financial

- **Potential \$500 million annually** to Columbia River Basin dams.
- **\$1 Billion annually** to Great Lakes and Mississippi infrastructure





Quagga mussels  
found in Snake  
River east of  
Oregon

# Golden mussels recently found in Sacramento delta

132

Watercraft traveled from golden mussel infested waters to Oregon in 2024





# Oregon AIS Program Overview

OSMB	<ul style="list-style-type: none"><li>• AISPP Financial and Contract Management</li><li>• Outreach and Education Materials</li></ul>
ODFW	<ul style="list-style-type: none"><li>• Conduct Watercraft Inspections</li><li>• Both Aquatic and Terrestrial Responsibilities</li></ul>
ODEQ	<ul style="list-style-type: none"><li>• Ballast water inspections</li></ul>
OSP	<ul style="list-style-type: none"><li>• Enforcement</li></ul>
Portland State University	<ul style="list-style-type: none"><li>• Early detection waterbody monitoring</li></ul>
Oregon Invasive Species Council	<ul style="list-style-type: none"><li>• Interagency/partner coordination</li></ul>



# Interstate coordination



Coordinate check  
stations and share  
information



Collaborate on  
incident  
response



Build consensus  
on priorities,  
rules, and  
protocols

## Regional Forums

- Western Regional Panel On Invasive Species. ([westernais.org](http://westernais.org))
- Columbia River Basin Team
- OR/WA Bistate.



# Pathways into Oregon

- Trailered Watercraft
- Ballast Water
- Natural Migration





# Prevention



ODFW: watercraft  
inspection program



ODEQ: Ballast Water  
Inspection Program



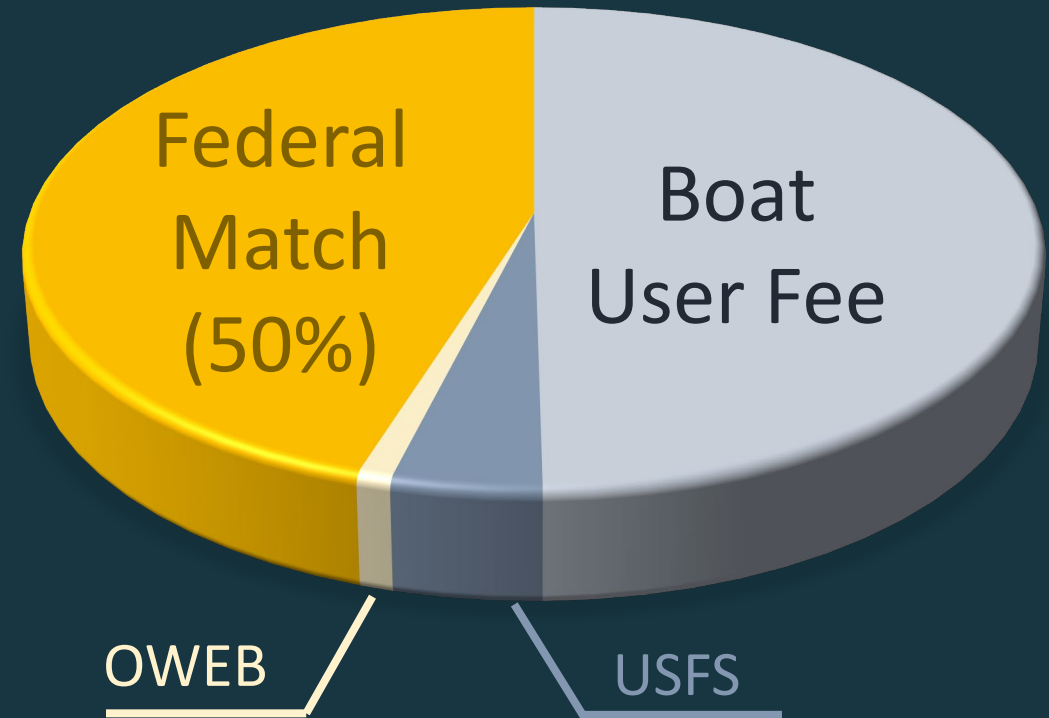


# Watercraft inspection program

5.5 permanent positions

14 seasonal positions

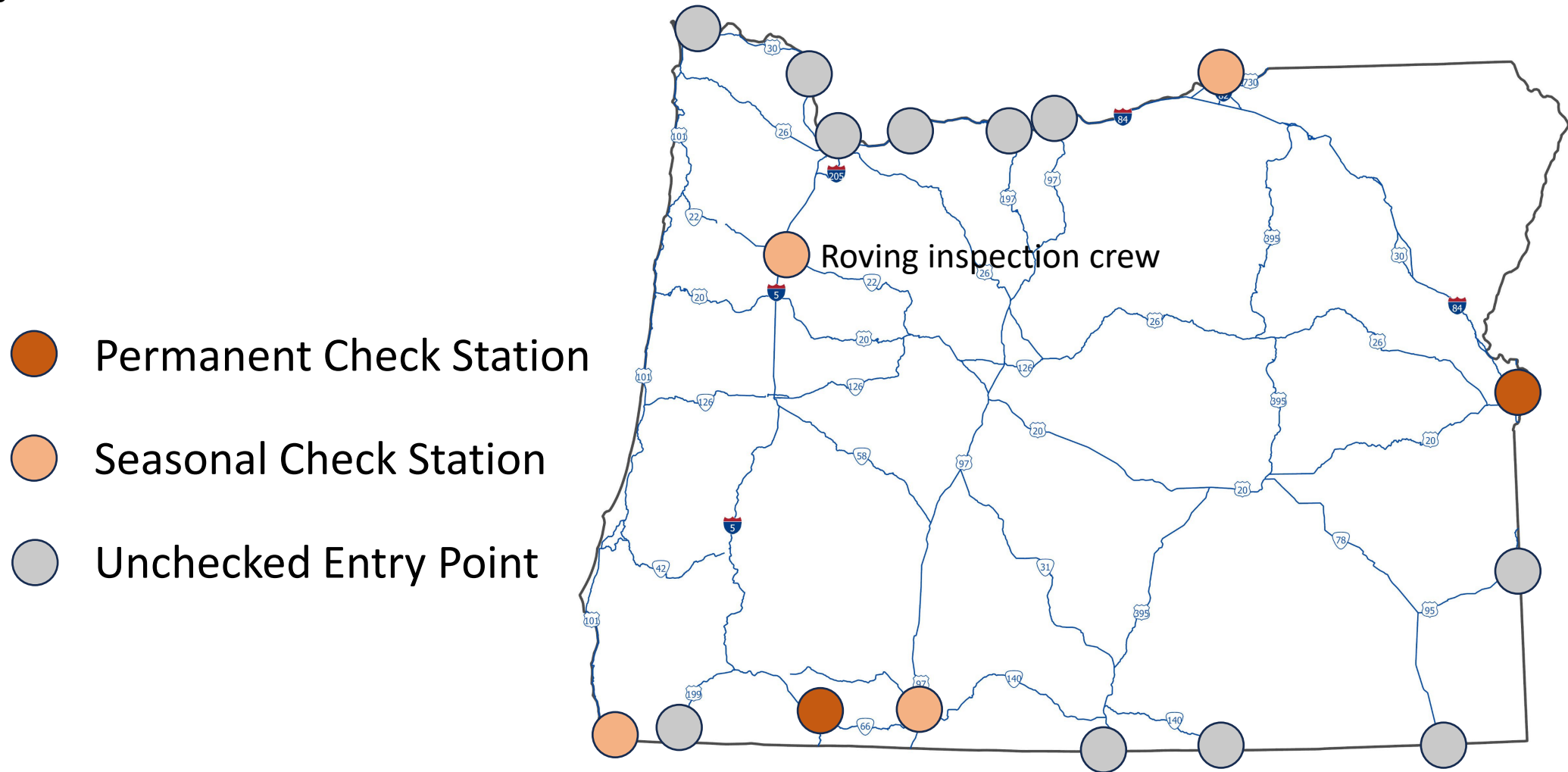
~\$2M Total Program Funding  
23-25 Biennia







# Existing Watercraft Inspection Stations



# Oregon Inspections (2010 – 2024)



**226,524**

Total  
Watercraft  
Inspected



**3,636**

Biofouled  
Watercraft



**173**

Mussel  
Fouled  
Watercraft

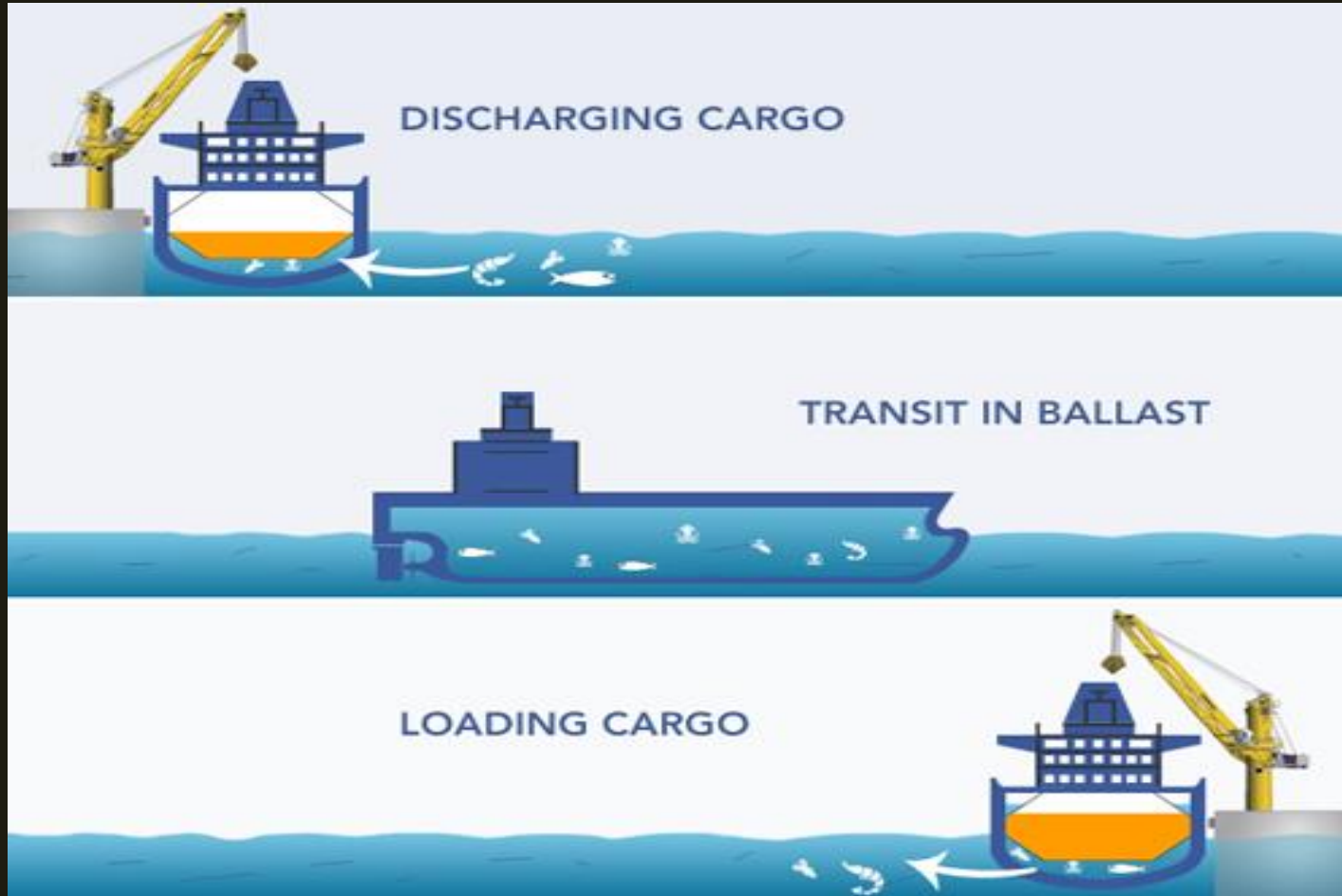


# 25-27 GRB

- Continue CSL
- POP 126 – self funded via S&S reductions to expand check station coverage



# Ballast Water: a vector for invasion





# Oregon's Ballast Water Program

Statutory Requirements (ORS 783.620-640; 783.990-992)

- Regulated vessels:
  - Commercial ships >300 gross tons
- Required management for discharge:
  - Mid-Ocean Exchange or Coastal Exchange
  - USCG-approved treatment system
  - Certain vessels must do both



# Inspections and Compliance Verification

- DEQ conducts targeted and random vessel inspections
- Major violations may be subject to civil and criminal penalties
- Program goal of inspection 12% of commercial arrivals to Oregon



# Oregon's Ballast Water Program



- Statutes established in 2001
- 1.5 FTE since 2012
- Supported by 50/50 cost share between arrival fee and GF allocation



# ***STATE OF OREGON FRESH WATER INVASIVE MUSSEL EARLY DETECTION MONITORING OUTLOOK***

***DR. ARICK ROUHE  
CENTER FOR LAKES AND RESERVOIRS***

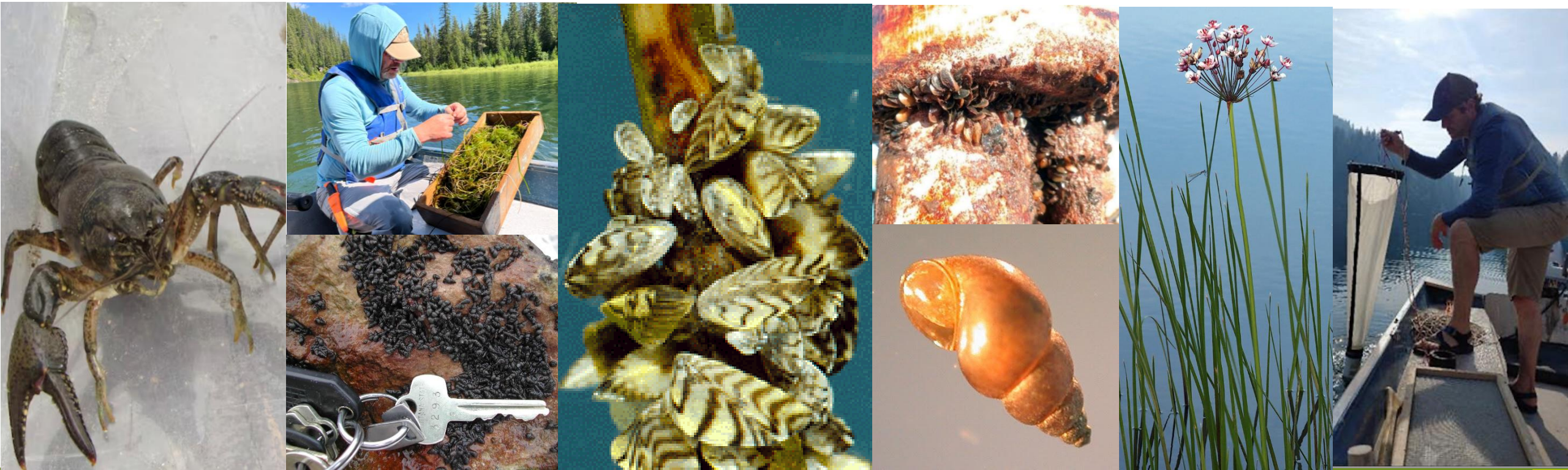




# *Center for Lakes and Reservoirs (CLR)* *at Portland State University*

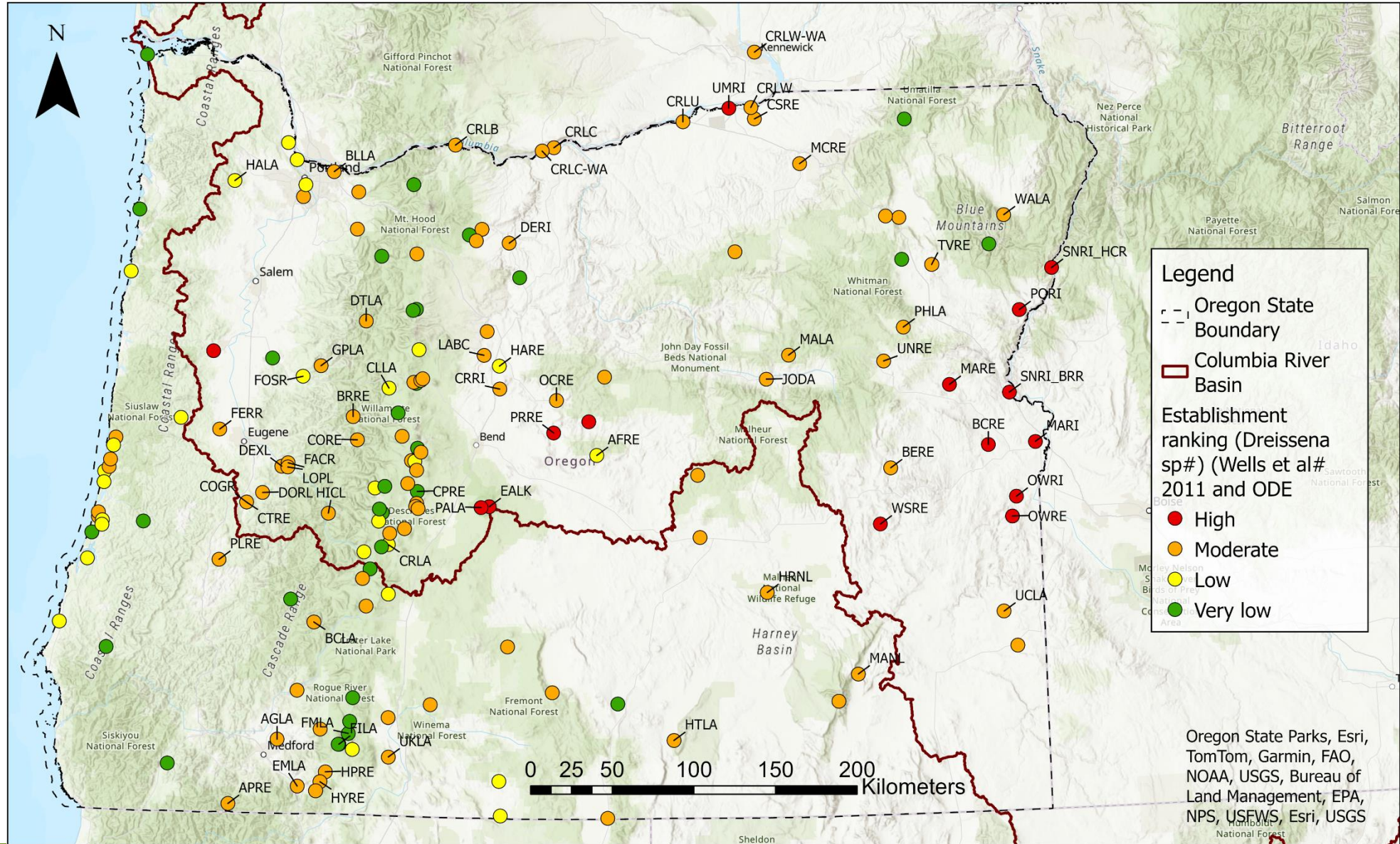


- ✓ **Established** by ORS 352.691 to be administered by Portland State University
- ✓ **Assist state and federal agencies in researching and mitigating nonindigenous, invasive aquatic species in Oregon**
- ✓ Work with communities in developing effective management of lakes and reservoirs





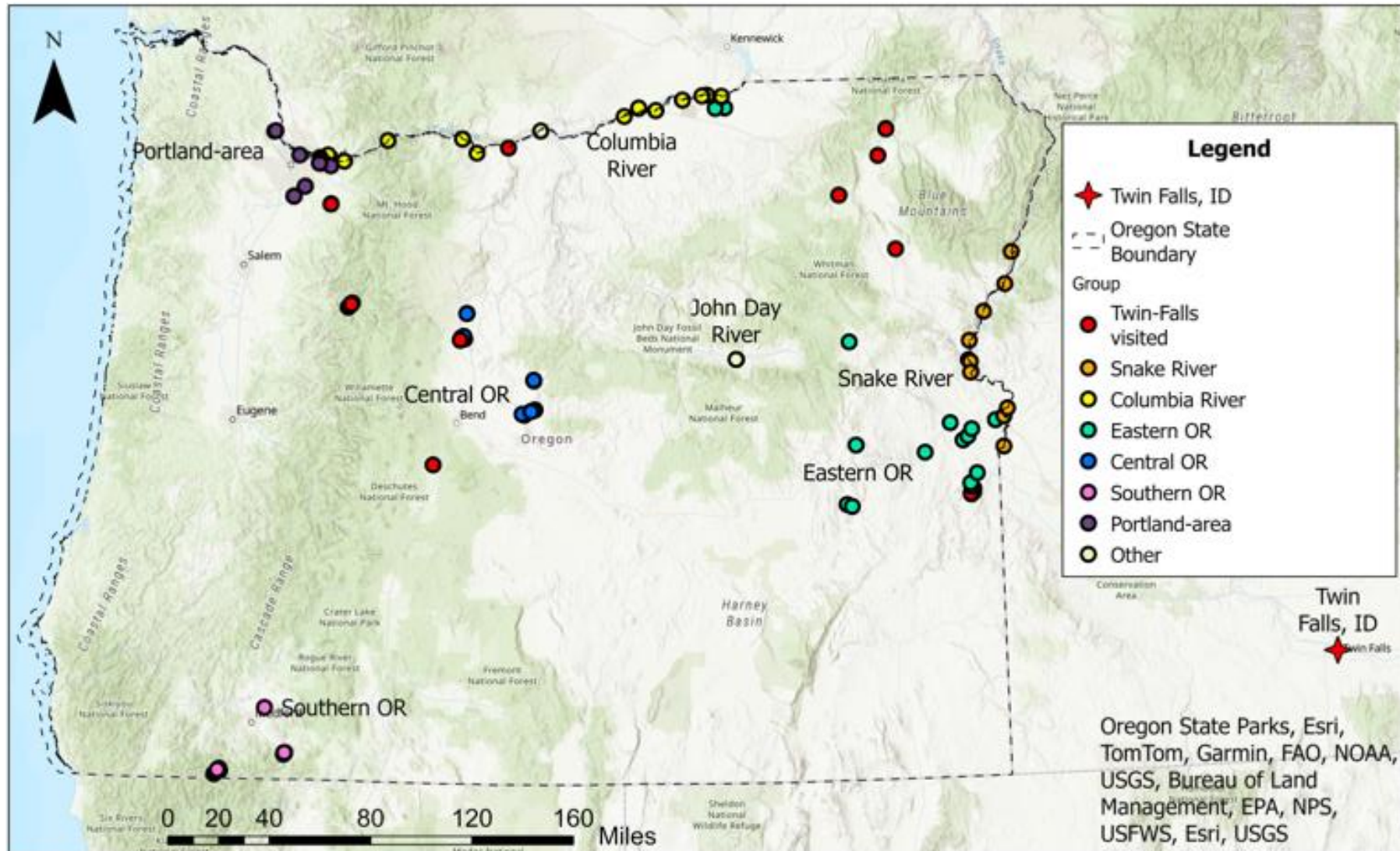
# CLR Early Detection Monitoring Locations







# Water bodies visited by boats from Twin Falls around Quagga event in 2023

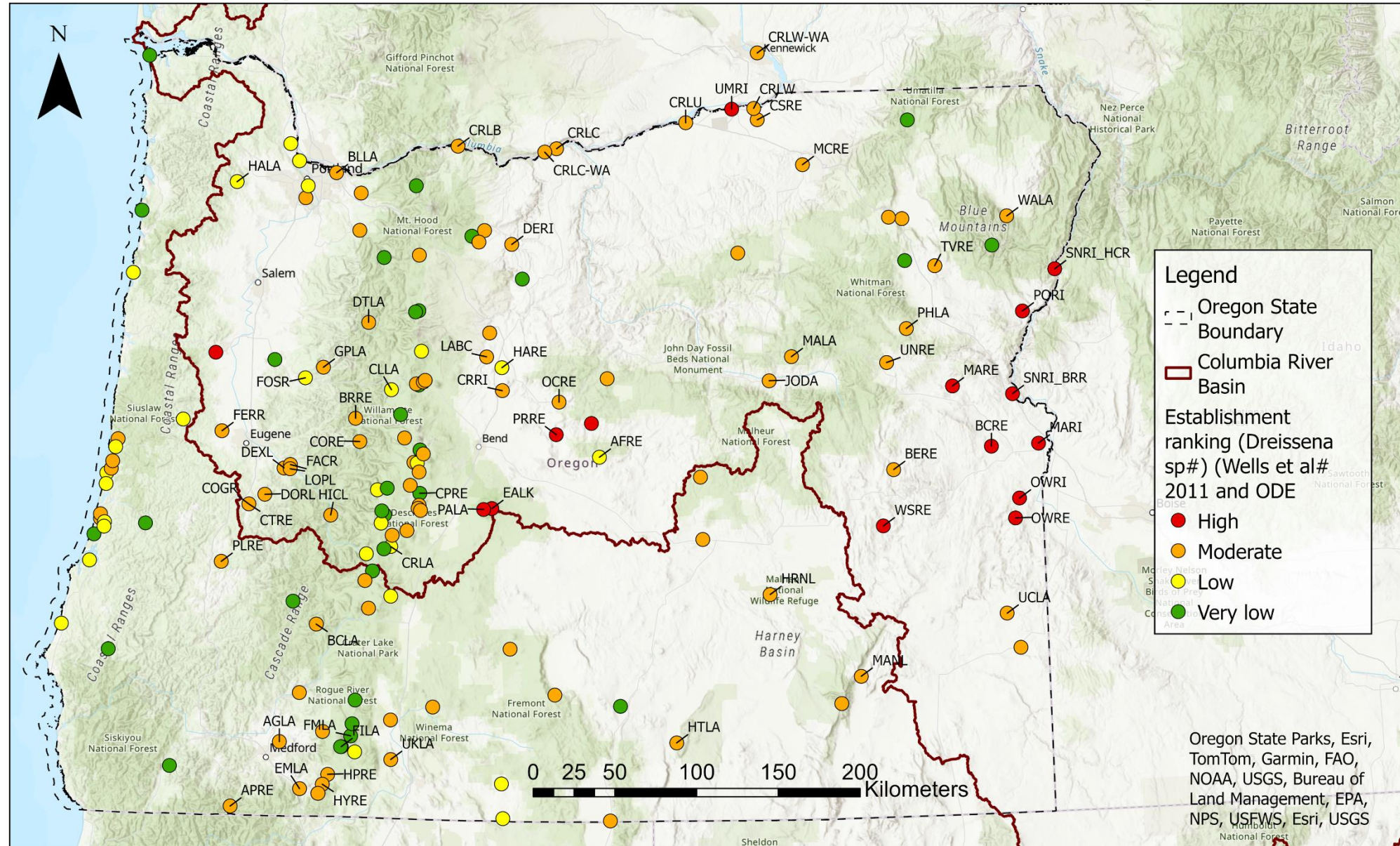








# CLR Early Detection Monitoring Locations







# Are we ready for invasive mussels?



# Invasive Mussel Preparedness Successes

Early-detection network

Rapid response plans

Treatment tools

Established partnerships

Regional coordination



# **Invasive Mussel Preparedness Challenges**

Perimeter defense

High-risk waters

Response capacity

Decentralized management

Roles and responsibilities

Resources

# Investing in prevention and early detection is worthwhile

