

HABITAT DIVISION



Habitat Division

General Funds	\$11,295,480	16%
Lottery Funds	\$5,049	<1%
Other Funds	\$36,517,927	52%
Federal Funds	\$21,791,614	31%
Total	\$69,610,070	

Habitat Division Administrator

38 Positions, 36.16FTE

Land Resources Program

Water Program

Oregon Conservation & Recreation Fund

Private Forest Accord Grant Program

Natural & Working Lands

Environmental Restoration Fund Coordination

Regions

57 Positions, 55 FTE

Regional Habitat Biologists

Hydropower Coordinators

Western Oregon Stream Restoration

Farm Bill Partner Biologists

East Region Fish Habitat Programs

PFA Stream Biologists

Willamette Wildlife Mitigation Program

2025-27 GRB
95 positions
91.16 FTE



Oregon's Fish and Wildlife Habitat



- All the land and waters of the state provide habitat for fish and wildlife
- All land ownerships
- Natural & Working Lands



HABITAT DIVISION



Our Work

WE ARE AN **INFORMATION HUB** for habitat trends and restoration priorities

We **SUPPORT** conservation actions through grant programs

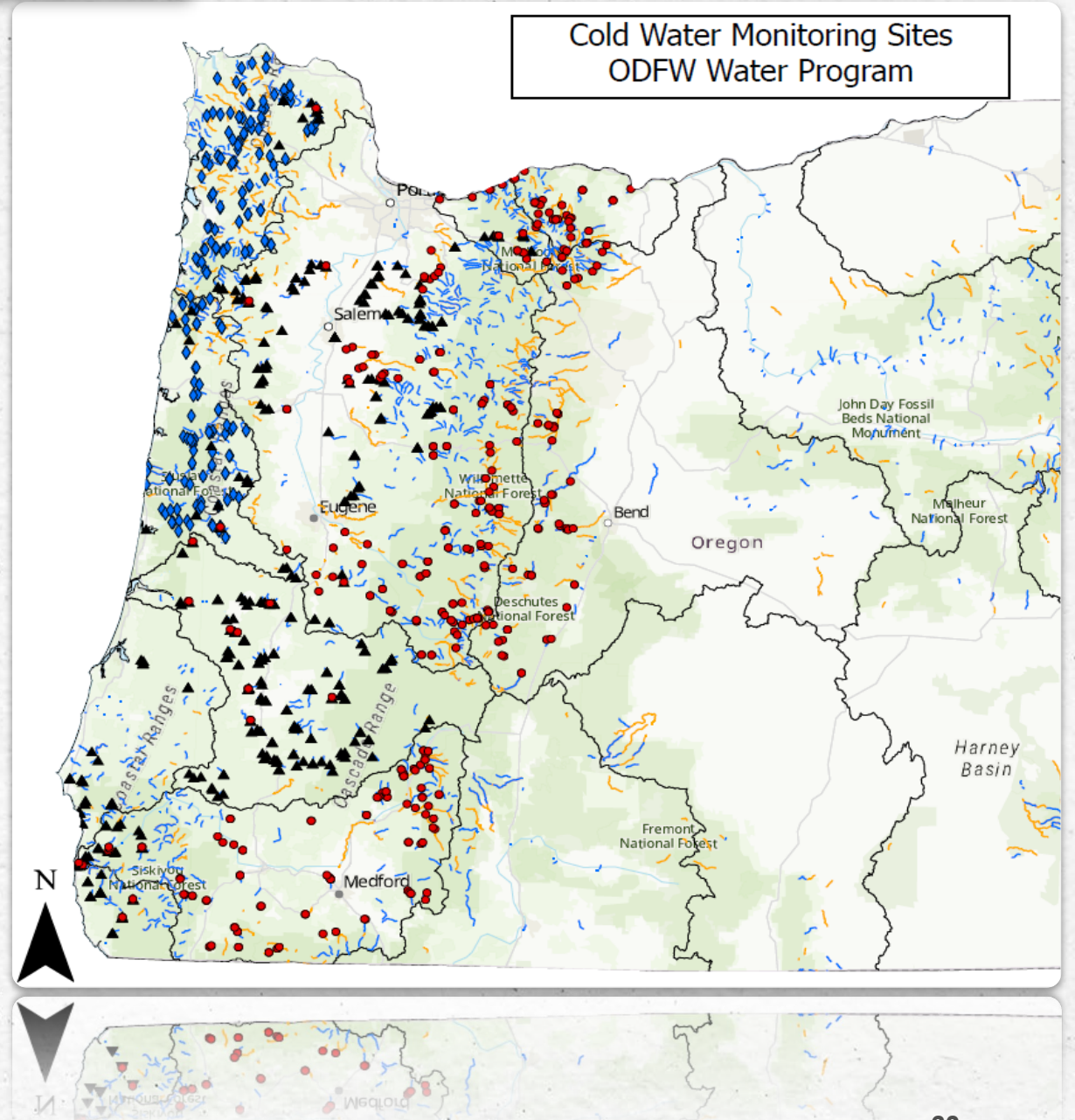
We **PROTECT, RESTORE AND IMPROVE HABITAT**

We provide **TECHNICAL ASSISTANCE** and seek **BALANCED SOLUTIONS FOR FISH AND WILDLIFE HABITAT**

WE PARTNER to leverage greater conservation outcomes

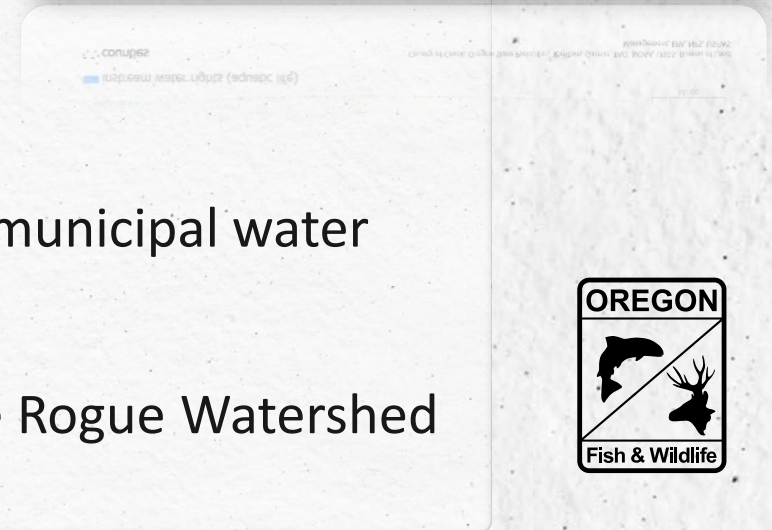
Data informed

- 18 new streamflow and 38 new temperature gages
- 1,000 devices deployed to monitor cold-water fish habitats
- Aquatic Habitat Priority Blueprints for flow protection & restoration



Protecting & restoring habitat

- 1,552 ODFW Instream Water Rights
- 448 applications 2016-present
- 13 protests resolved in 2023-25
- ~10% of Oregon river miles covered
- Technical assistance on water rights, municipal water extensions
- New Flow Restoration Biologist in the Rogue Watershed



Prioritizing **working lands** for people & wildlife

Voluntary Actions Centered on Landowner Goals

- What benefits the landowner can benefit fish & wildlife
- 5 NRCS Farm Bill Biologists
- 2 Natural Working Lands Biologists
- 240+ different landowners
- Tribal governments
- Federal, state, local agencies & partners



Leveraging **partners** for greater conservation outcomes



- **Good Neighbor Authority**

- \$4M US Forest Service, Bureau of Land Management
- 30+ projects to improve forest and range health, enhance habitat, and monitor species

- **Federal Grants**

- ODFW has supported Oregon partners in acquiring nearly \$100M in federal funds for habitat restoration



Providing technical assistance to create **balanced solutions** for fish and wildlife

- ODFW renewable energy & wildlife guidelines
- Creative mitigation solutions
- State/county land use planning & project review



Supporting conservation through our grant programs



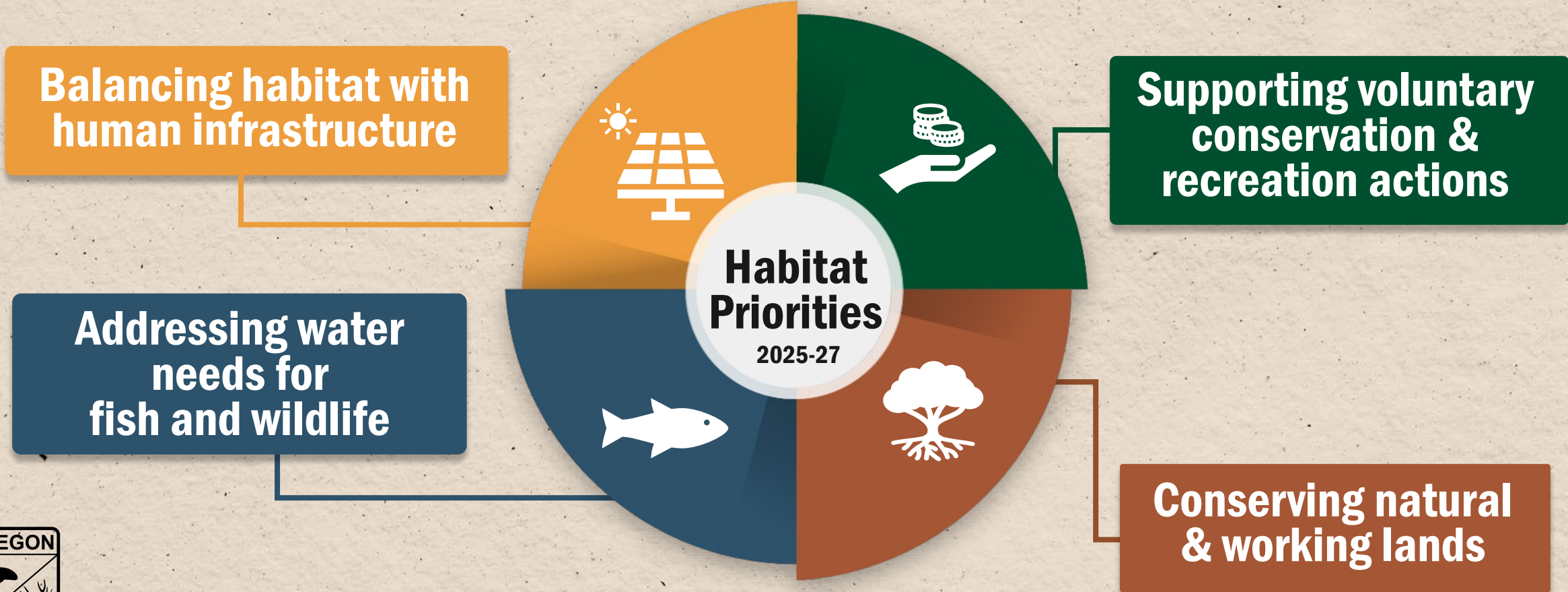
PRIVATE FOREST ACCORD
GRANT PROGRAM
OREGON DEPARTMENT OF FISH & WILDLIFE

PFA Grant Program
2023: 23 projects, \$9.98M
Significant benefits to fish passage, wetland/stream restoration, supporting beaver-modified landscapes



OCRF Grant Program
Since 2019: 183 projects, \$8M supporting 110 partner organizations
Supports State Wildlife Action Plan and outdoor recreation

Key Priorities for 2025-27



**Habitat
Priorities
2025-27**



Addressing Water Needs for Fish & Wildlife

Science & prioritization of instream flow and cold-water needs for fish and wildlife

Water development review, management, and state & regional water planning

Flow restoration and instream solutions

Water quality implementation plans and permit review



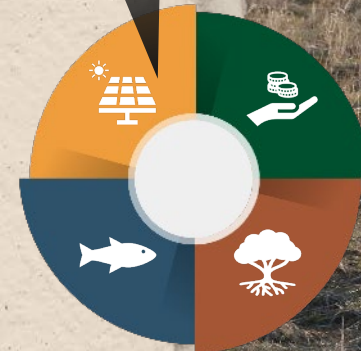
Balancing habitat with human infrastructure

Data and information

Proactive outreach and collaboration with landowners, regulators, and developers

Participation in local and state planning efforts

Expanding creative mitigation solutions



Supporting Conservation & Recreation Actions

**Habitat
Priorities**
2025-27



PFA Grant Program – continued benefits for aquatic species

OCRF Grant Program – diversifying participation and removing barriers

Environmental Restoration Fund Program and Project Development



Resilience of Natural Working Lands

Habitat
Priorities
2025-27



Data collection, modeling and prioritization

Private Forest Accord implementation

Participation in local and state planning efforts

Habitat conservation and restoration



Policy Option Packages

Addressing water needs for fish and wildlife

101 Instream Water Rights & Land Use Resolution (GF, Cont.)

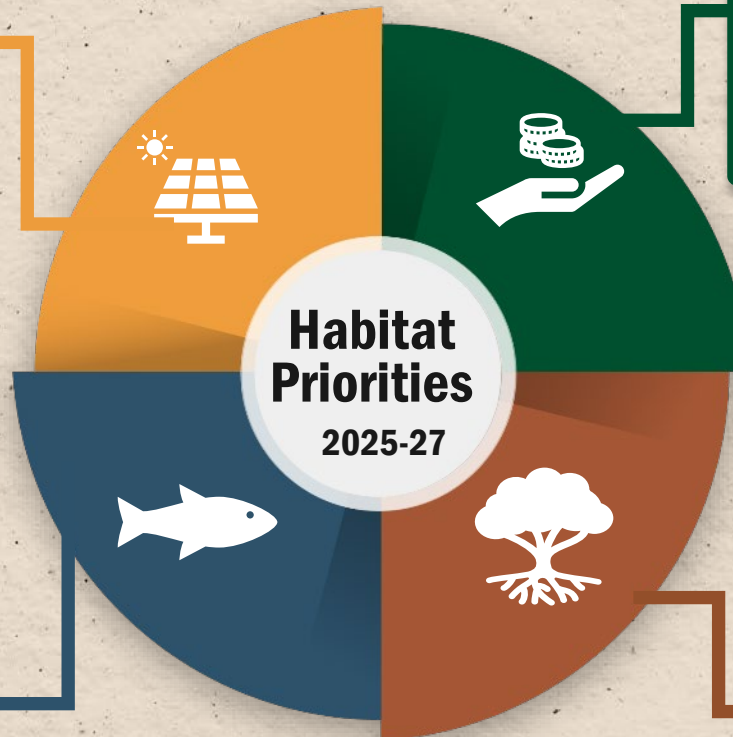
Supporting voluntary conservation and recreation actions

Balancing habitat with human infrastructure

114 Regional Habitat Phase 2 (OF, New)
116 Klamath Watershed District Manager (OF/GF Fund Shift)
122 Wildlife Connectivity Lottery Bond Revenue (OF, Cont.)
125 Mitigation & Wildlife Climate Resiliency (FF, Cont.)

Conserving natural and working lands

108 Natural Climate Solutions Fund (OF, Cont.)

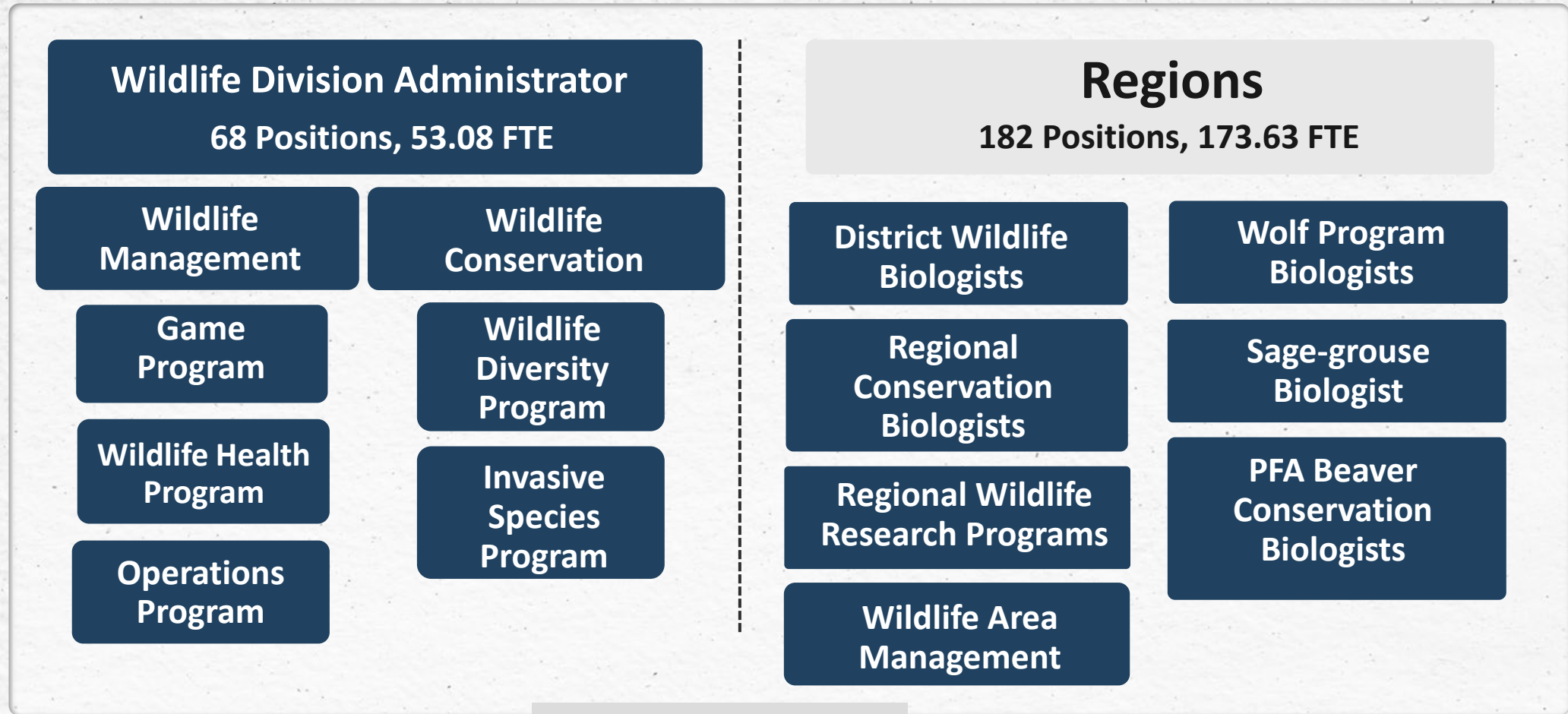


WILDLIFE DIVISION



Wildlife Division

General Funds	\$6,425,969	6%
Lottery Funds	\$1,597,908	2%
Other Funds	\$49,283,574	49%
Federal Funds	\$42,615,656	43%
Total	\$99,923,107	



2025-27 GRB
250 positions
226.71 FTE





Oregon has more than 650 species of Wildlife

Mammals

Includes species ranging from bats and rodents to carnivores and large ungulates

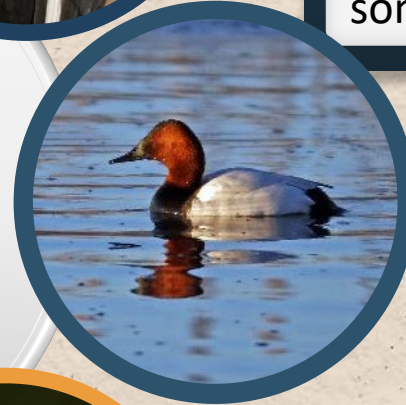


Birds

Oregon supports diverse bird populations, including waterfowl, upland game birds, shore birds, raptors, songbirds, and more



Stewards of Oregon's Wildlife



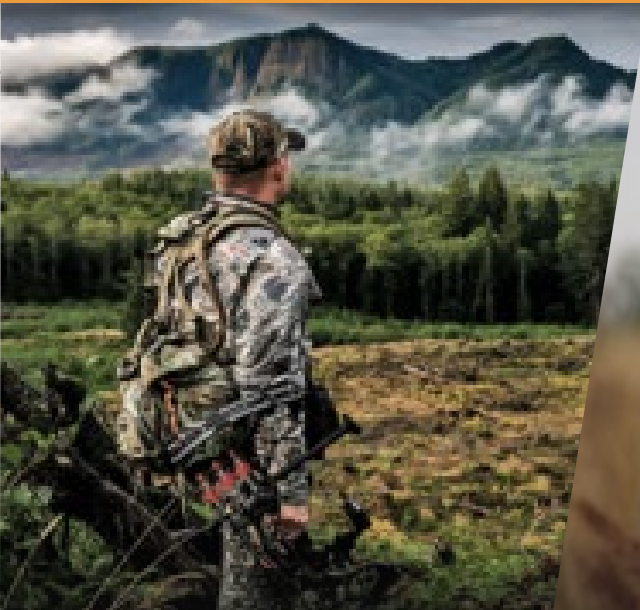
Reptiles

Oregon's reptiles include snakes, lizards, and two native turtle species

Amphibians

Frogs, toads, salamanders, and newts live throughout the state

Wildlife is important to Oregon's Economy



Hunting

Wildlife Viewing and Nature Observation

~1.7M Hunter days in the field
~\$96 Spent per trip day
~\$162M Contribution to economy

~10.7M Viewing days in the field
~\$88 Spent per trip day
~\$940M Contribution to economy



Our Work

Science-based wildlife management

Conservation focused

Support for public **access and opportunity**

Manage for **resilient wildlife populations** in a changing climate

Proactively manage wildlife diseases

Fight the infestation and spread of **invasive species**

Partner with federal, state, tribal managers

Technical assistance to landowners and partners



Science-based Core Programs

Field surveys generate data that informs management

Applied science for species management decisions



Ensuring Public Access & Improving Habitat

Manage wildlife for use and enjoyment
by public

Promote responsible wildlife-related
outdoor recreation

32 years of the Access and Habitat Program

1.6 million acres of habitat improved

8.9 million acres of public access

Funded by hunters!





Wildlife Management Areas

211,560 Acres

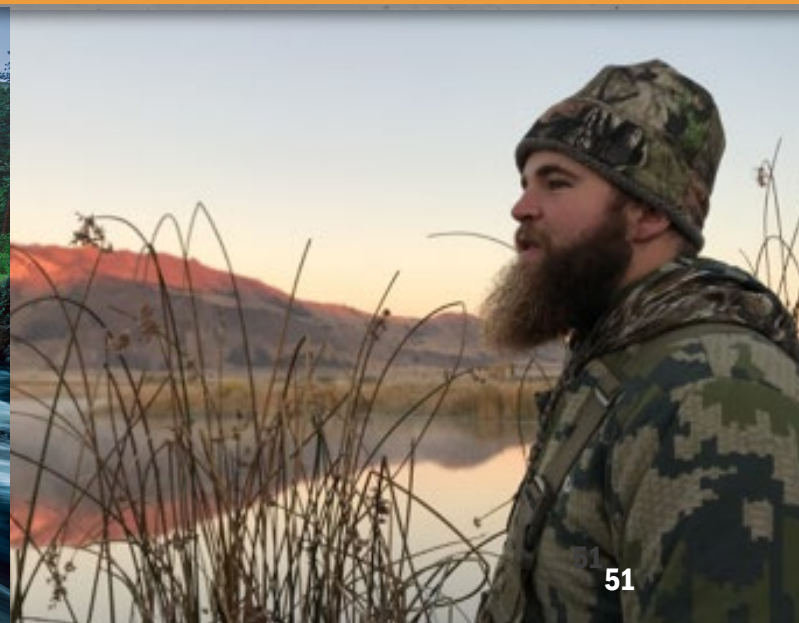
43 Properties

20 Wildlife Management Areas

Managed for conservation of species and habitat

Provide hunting, fishing and viewing opportunities

Protect significant cultural and historic sites on properties





Supporting Communities Living with Wildlife

Share wildlife information in local communities

Provide technical resources for conflict resolution & living with wildlife



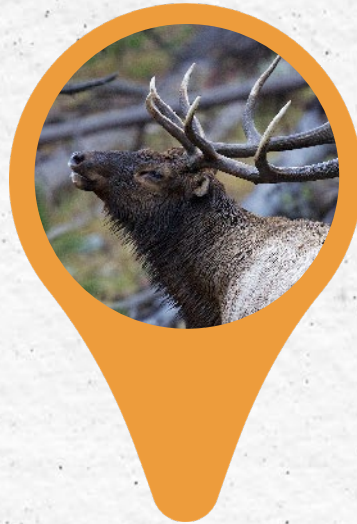
Recent Accomplishments



**Update
Sage Grouse
Core Area Maps**



**Protect
Minam River
Wildlife Area**



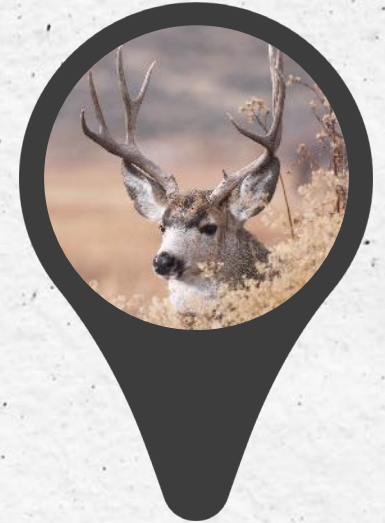
**Prevent
Chronic
Wasting
Disease**



**Construct
Highway 30
Wildlife
Crossing**



**Develop
Wildlife
Corridor
Action Plan**



**Implement
Mule Deer
Management
Plan**

Key Priorities for 2025-27



Resiliency – Wildlife Disease Surveillance and Monitoring



Chronic Wasting Disease (CWD)

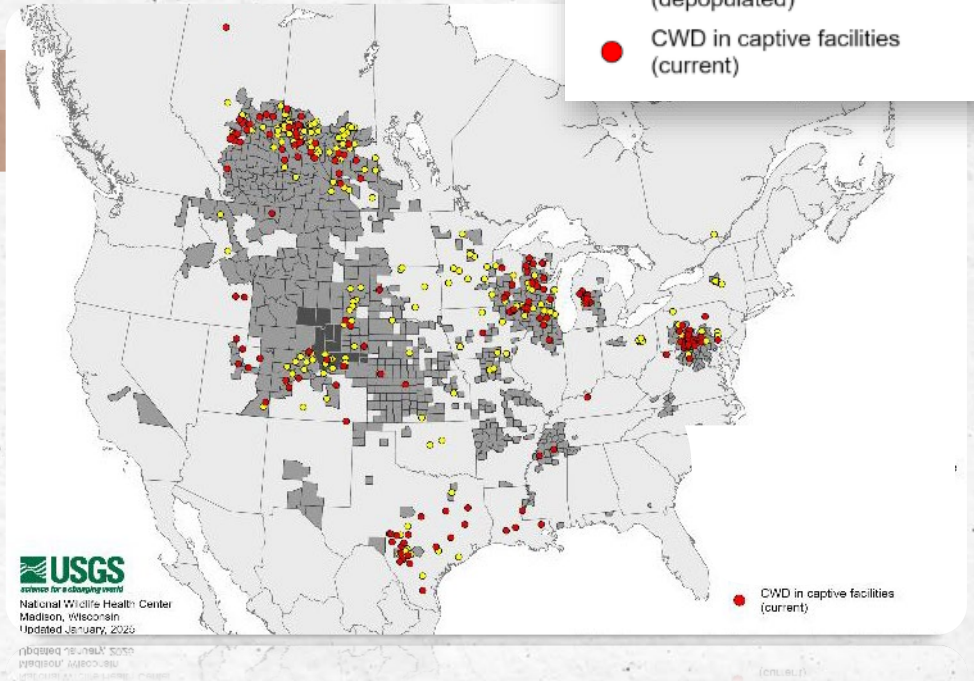
100% Fatal

> 35,000 Samples since 2002

4,173 Samples this year

Distribution of Chronic Wasting Disease in North America

- CWD in free-ranging populations
- Known distribution prior to 2000 (free-ranging)
- CWD in captive facilities (depopulated)
- CWD in captive facilities (current)



Monitoring emerging zoonotic diseases

Highly pathogenic avian influenza (bird flu) response

Safe wildlife handling guidance

Resiliency



Wildlife
Priorities
2025-27



Invasive Species Management

~22,000

Average # of boats inspected annually

300-500

Average # of decontaminations annually

173

Interceptions of quagga or zebra mussels since 2010

\$1 billion

Annual impact to Great Lakes and Mississippi infrastructure

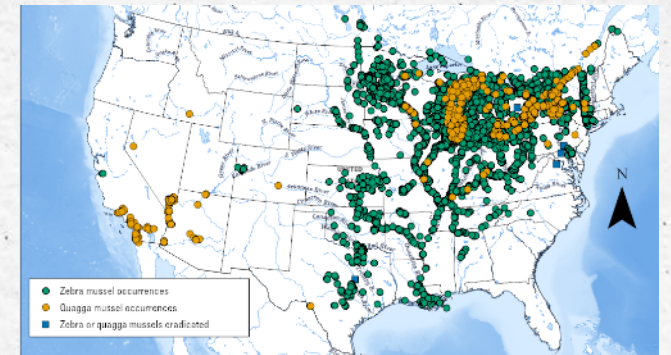


PREVENTION

MONITORING



EDUCATION



Quagga mussel detection in ID

Golden mussel detection in CA



Wildlife
Priorities
2025-27

Oregon's State Wildlife Action Plan



**10-Year
Revision**



**Coordinate and
prioritize **voluntary**
conservation action by
landowners, agencies,
and other partners**



**Expand
implementation**

Wildlife
Priorities
2025-27

Oregon's State Wildlife Action Plan



600+ Species assessed

~300 Greatest Conservation Need

~100 Greatest Information Need



Key Conservation Issues



Key Habitats



Conservation Toolbox



Policy Option Packages

