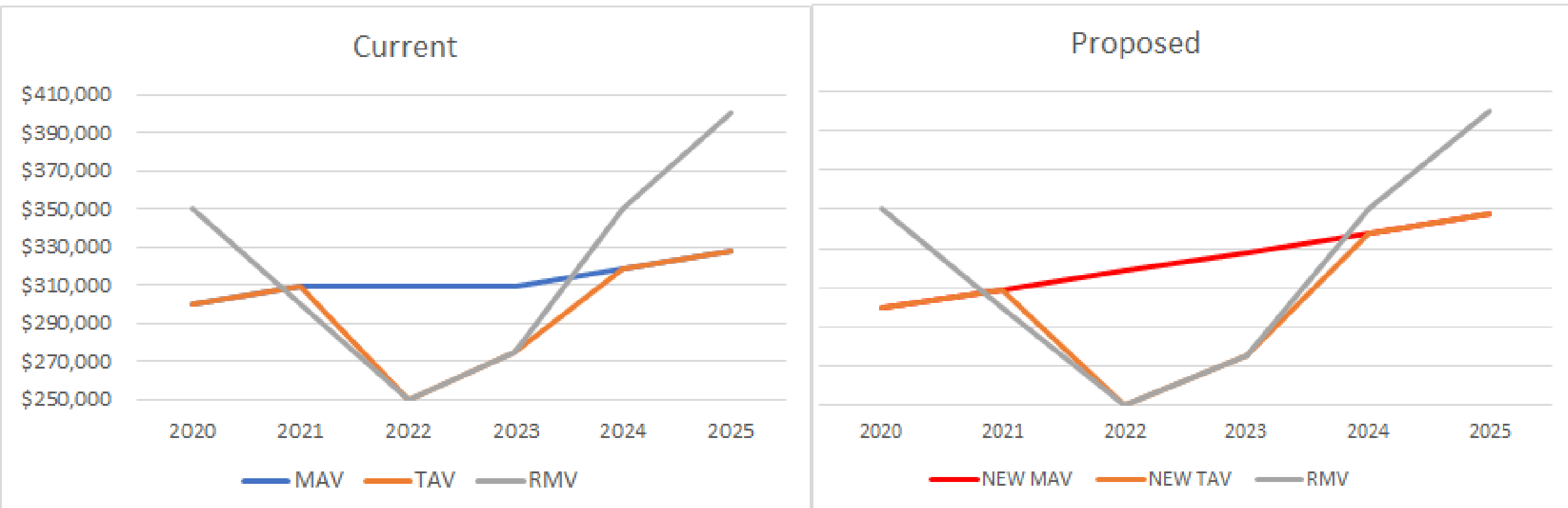
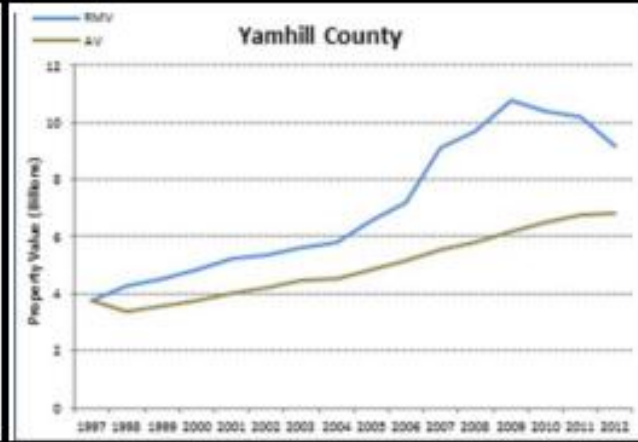
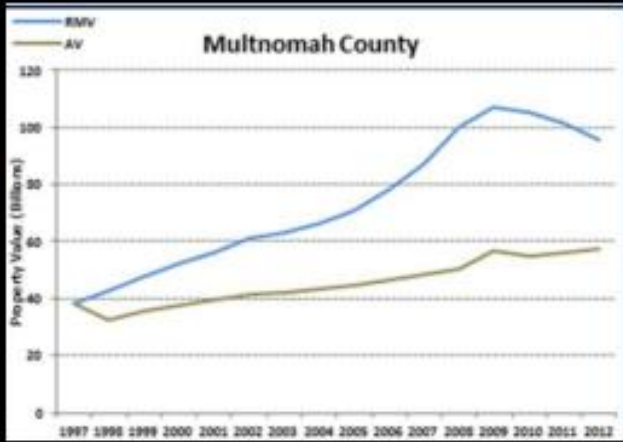
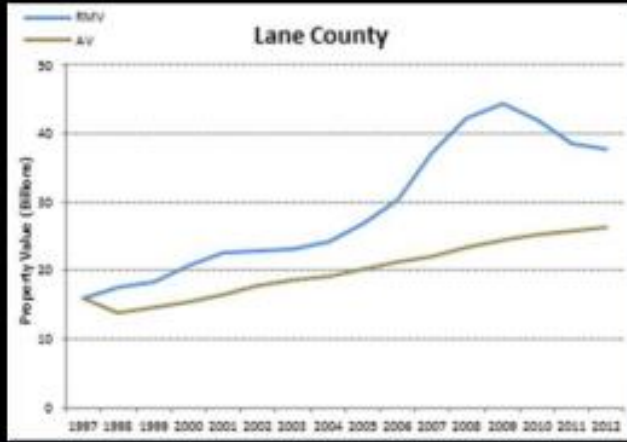
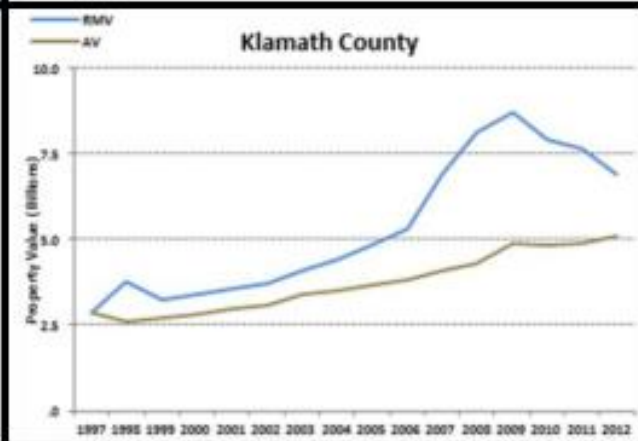
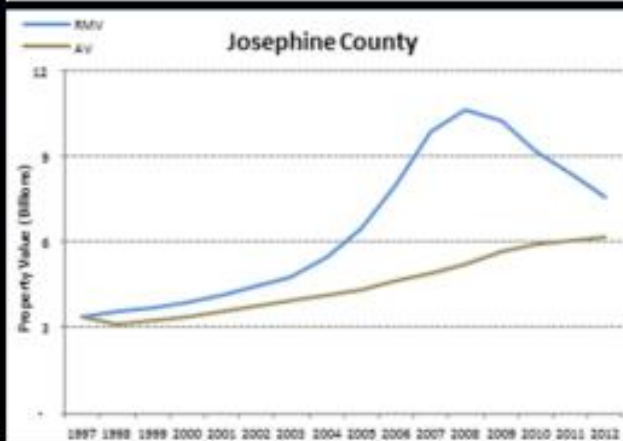
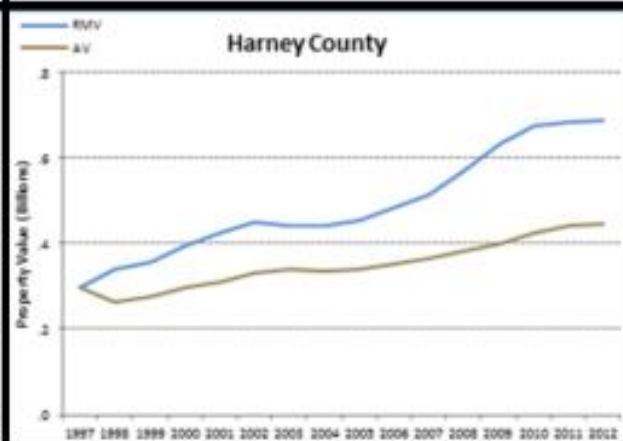
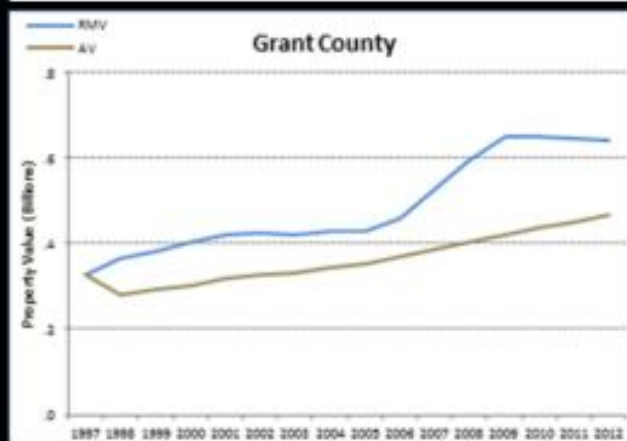
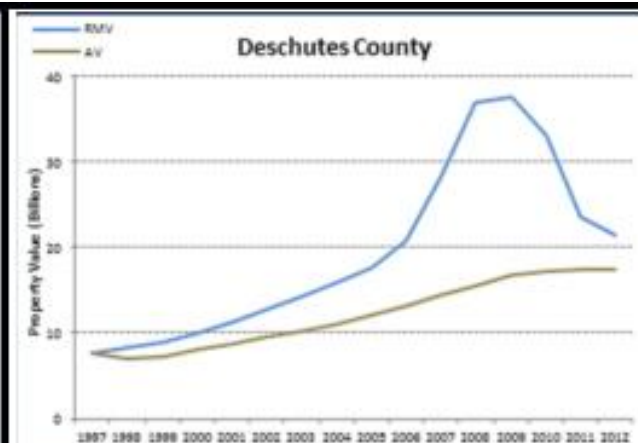
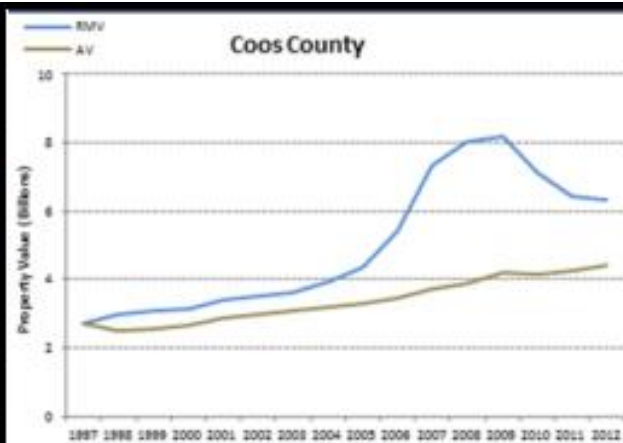
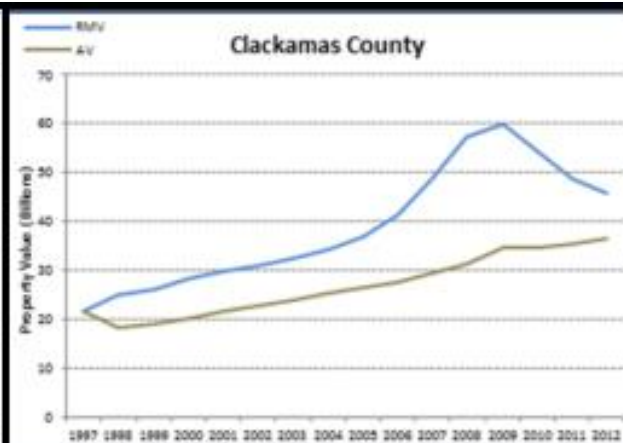
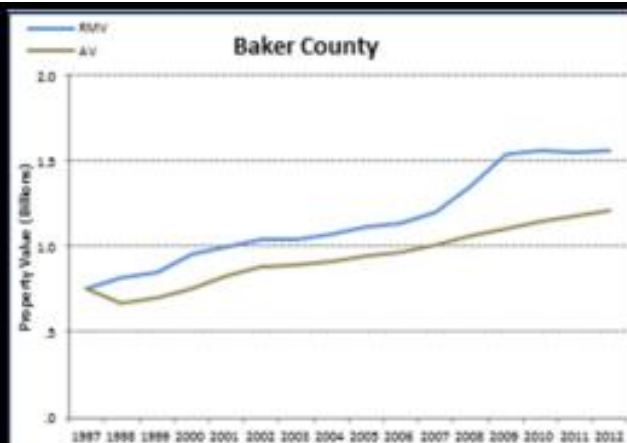
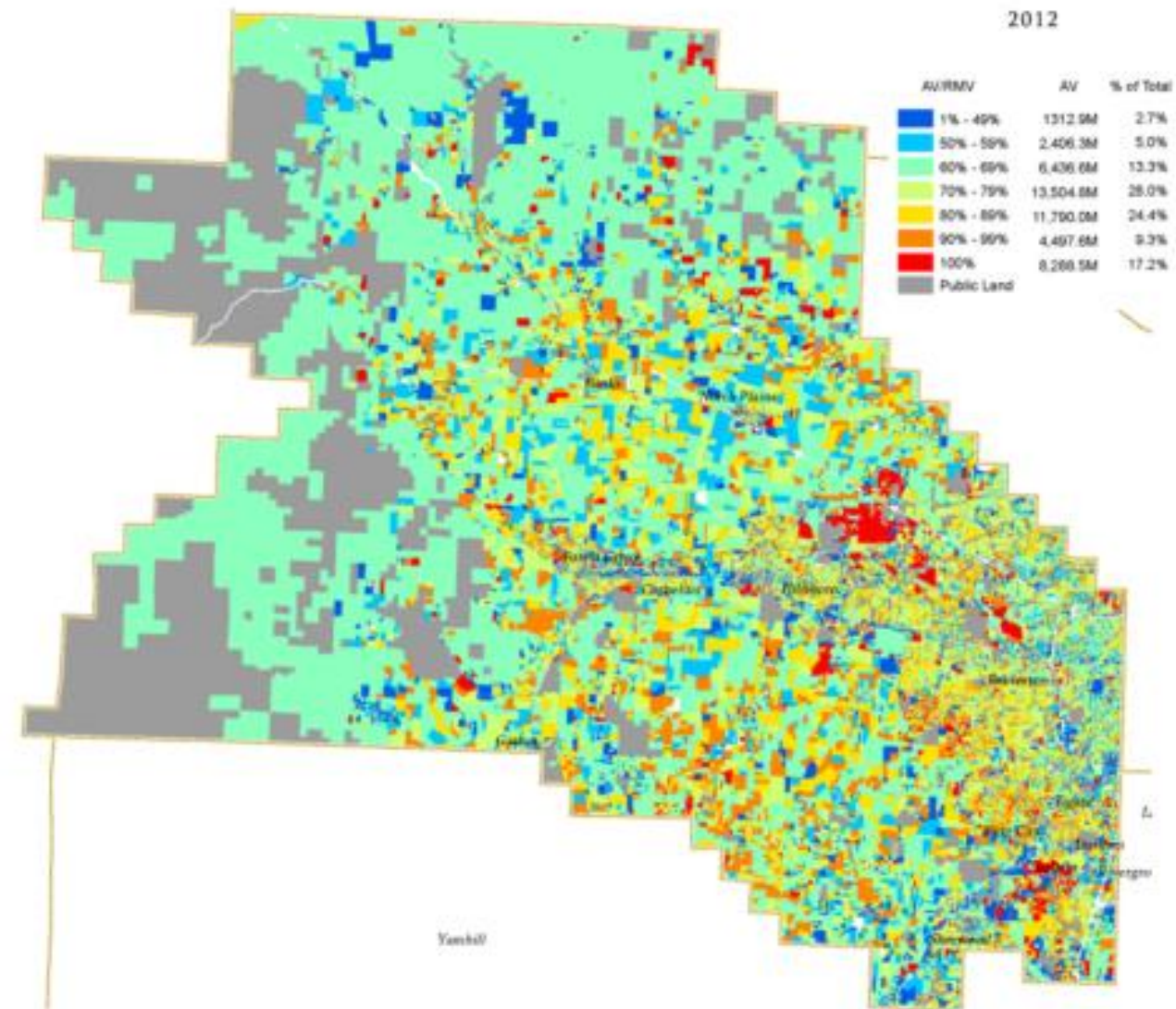
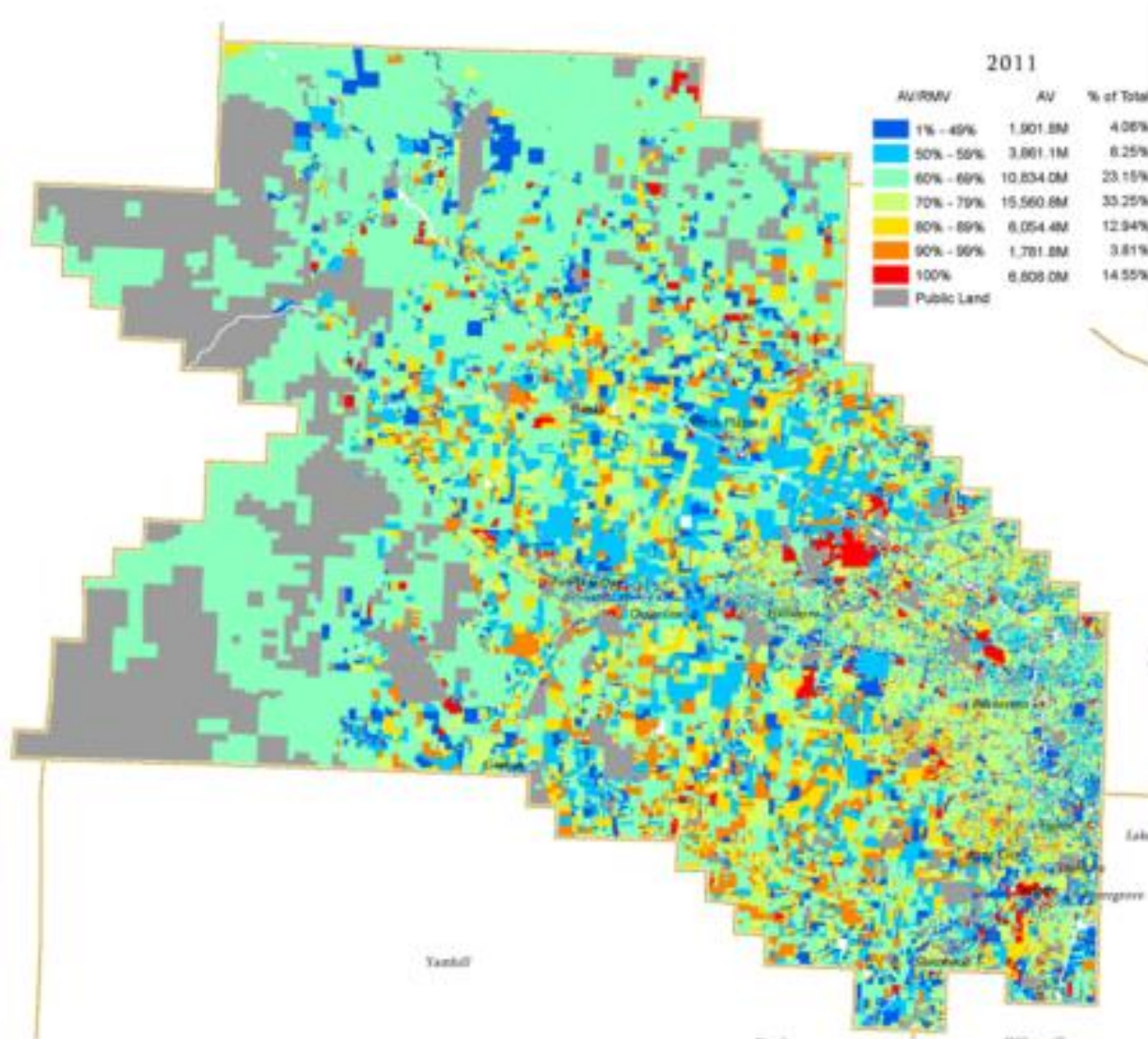


- RMV – Real Market Value
- MAV – Maximum Assessed Value
  - Capped at 3% unless RMV is lower
- TAV – Taxable Assessed Value – Lower of RMV and MAV





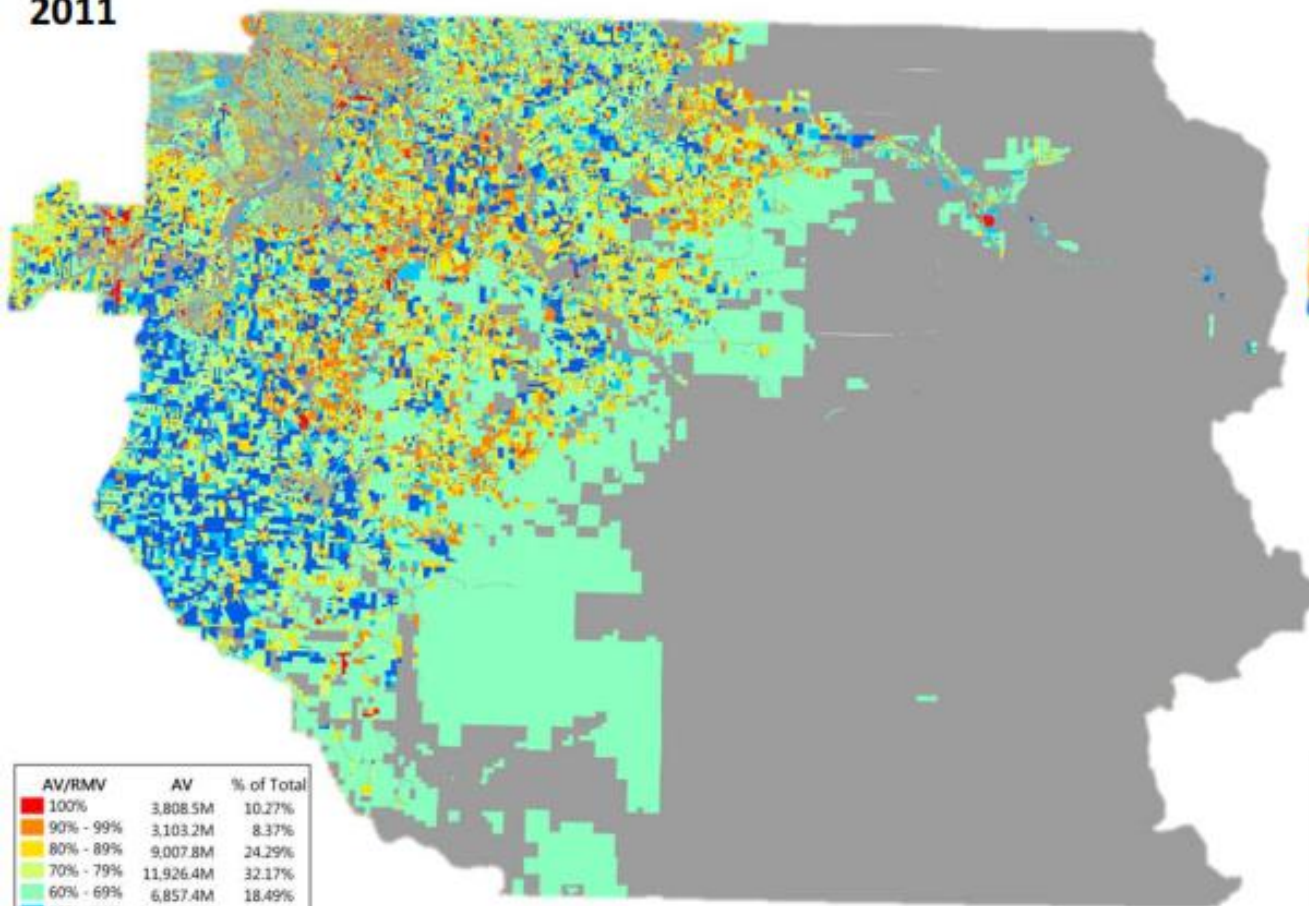
# Washington County





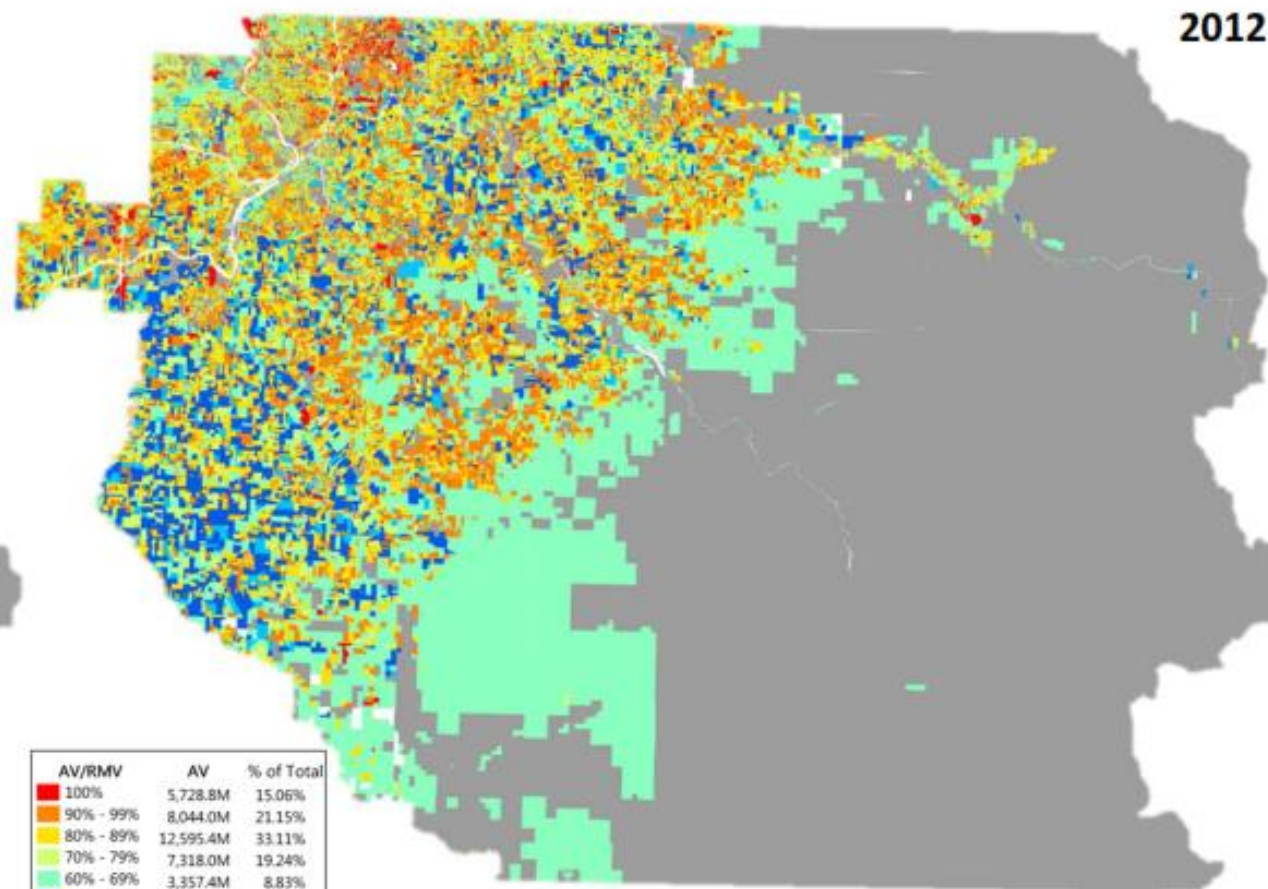
# Clackamas County

2011



AV/RMV	AV	% of Total
100%	3,808.5M	10.27%
90% - 99%	3,103.2M	8.37%
80% - 89%	9,007.8M	24.29%
70% - 79%	11,926.4M	32.17%
60% - 69%	6,857.4M	18.49%
50% - 59%	2,090.1M	5.64%
1% - 49%	284.3M	0.77%
Public Land		

2012

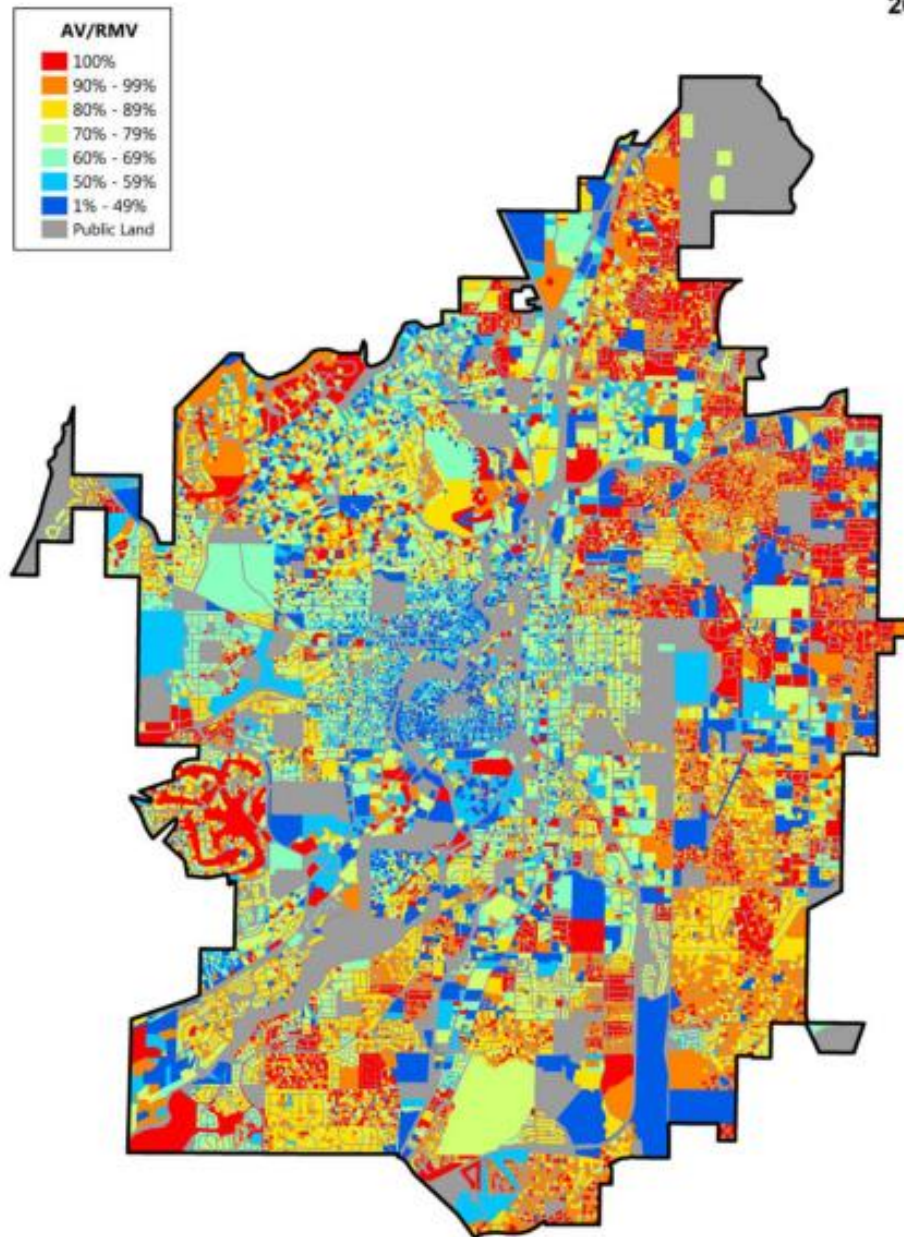


AV/RMV	AV	% of Total
100%	5,728.8M	15.06%
90% - 99%	8,044.0M	21.15%
80% - 89%	12,595.4M	33.11%
70% - 79%	7,318.0M	19.24%
60% - 69%	3,357.4M	8.83%
50% - 59%	831.6M	2.19%
1% - 49%	160.9M	0.42%
Public Land		

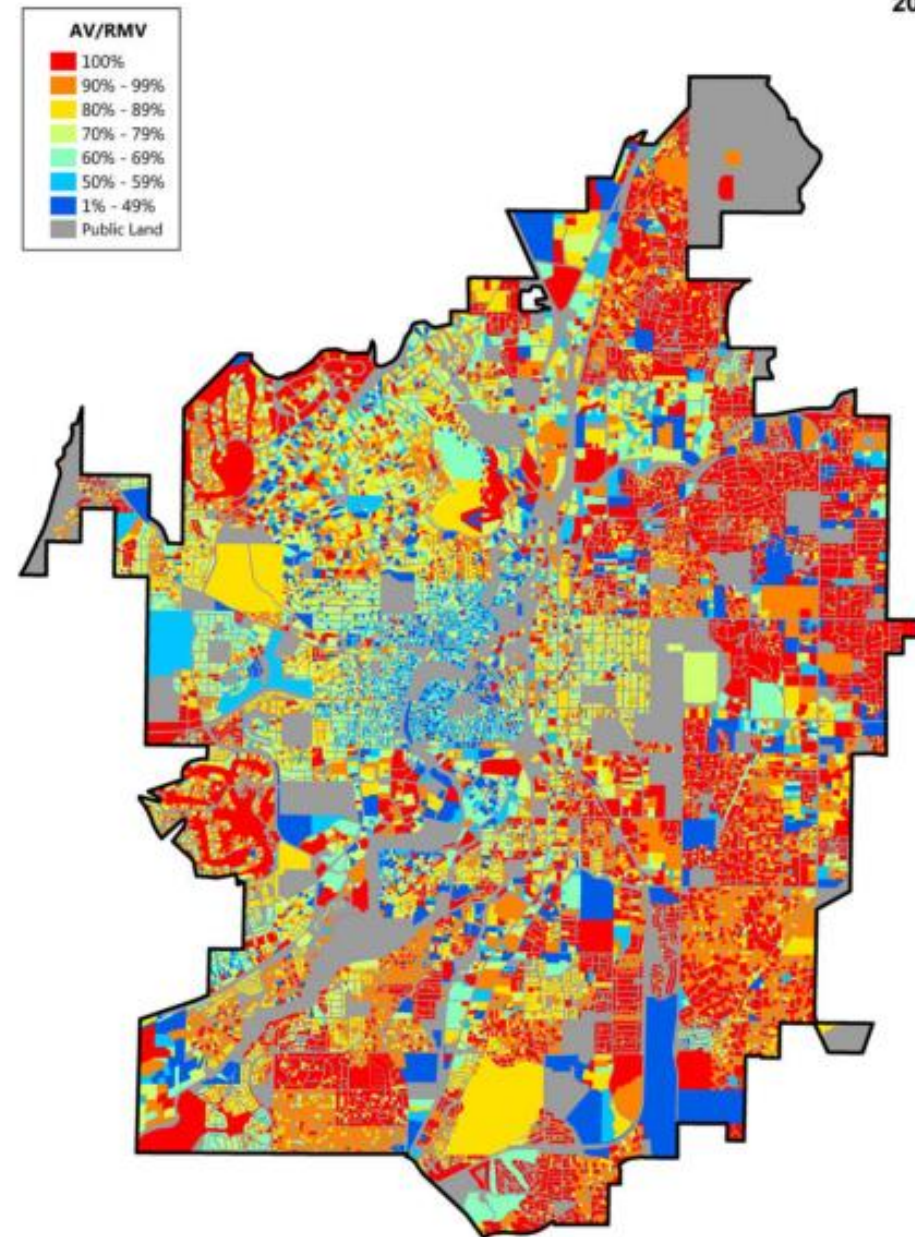


# City of Bend

2011



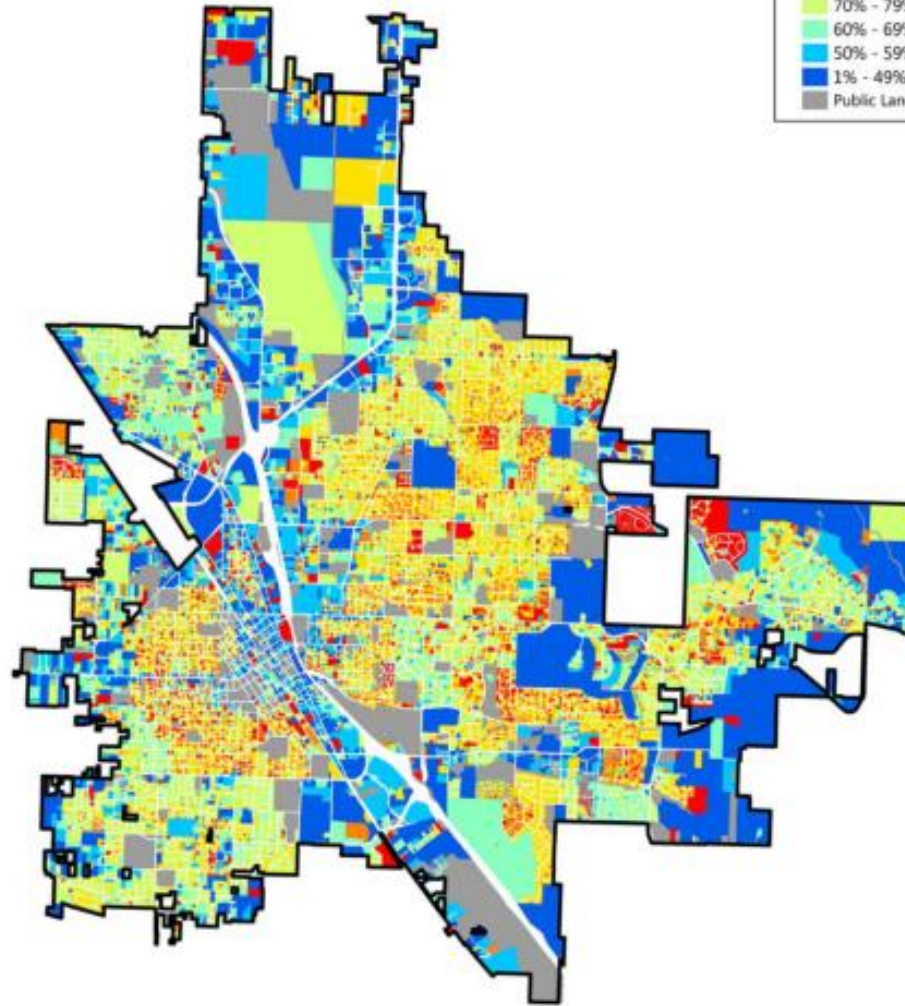
2012





# City of Medford

2011



2012

