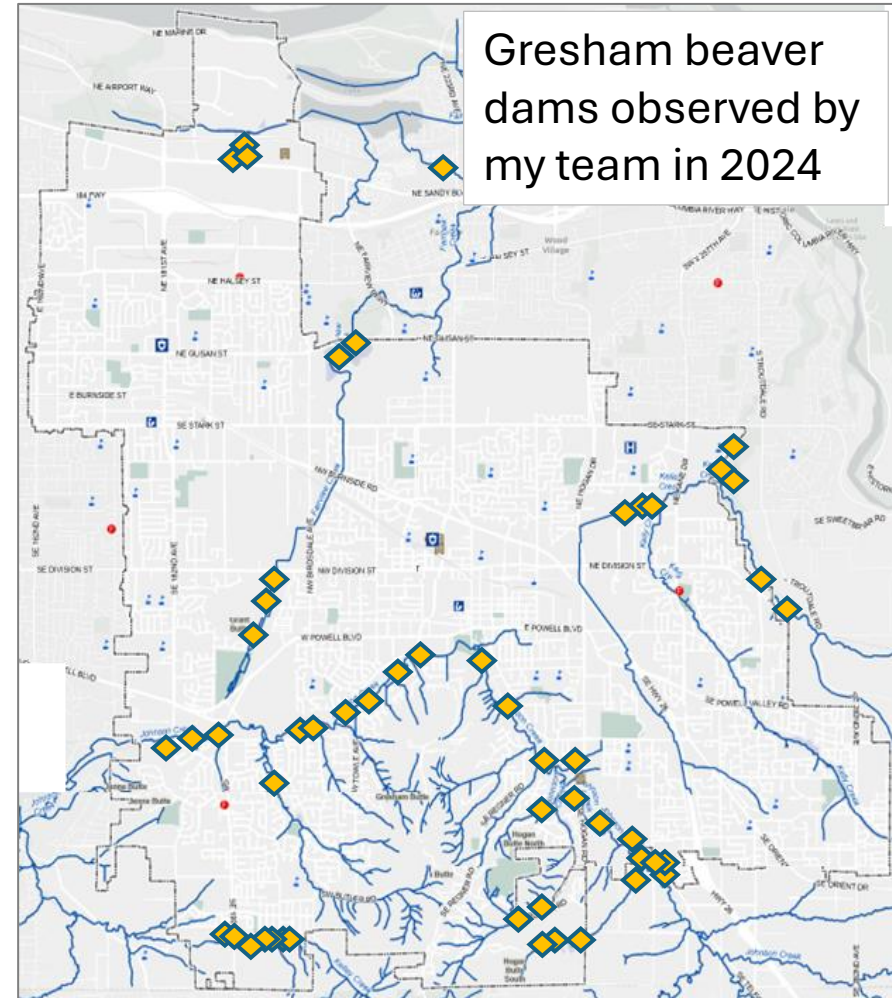


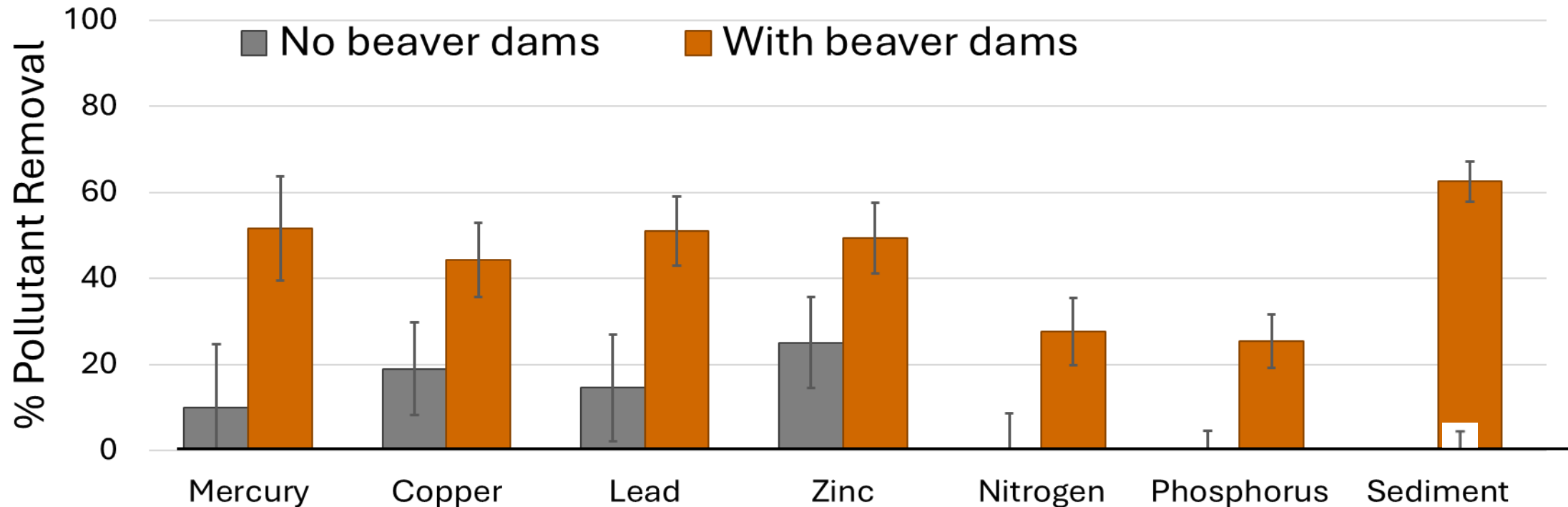
# Beavers and Water Quality in Gresham, Oregon

Katie Holzer, PhD; Senior Environmental Scientist, City of Gresham



# Pollutant Study

- 15 years of samples
- Beaver activity improved water quality at constructed water quality facility
- Dam more than doubled removal of most priority pollutants





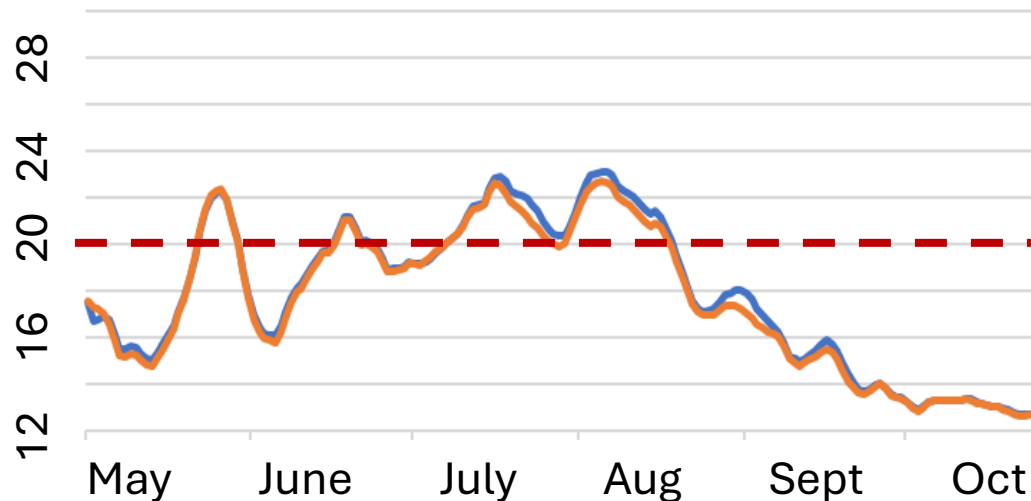
# Temperature Study

- 8 dams, 3 years of data
- Ponds generally maintained or slightly cooled overall stream temperature upstream vs. downstream of ponds
- Beaver dams generally provided cool refuge for fish in pond bottoms

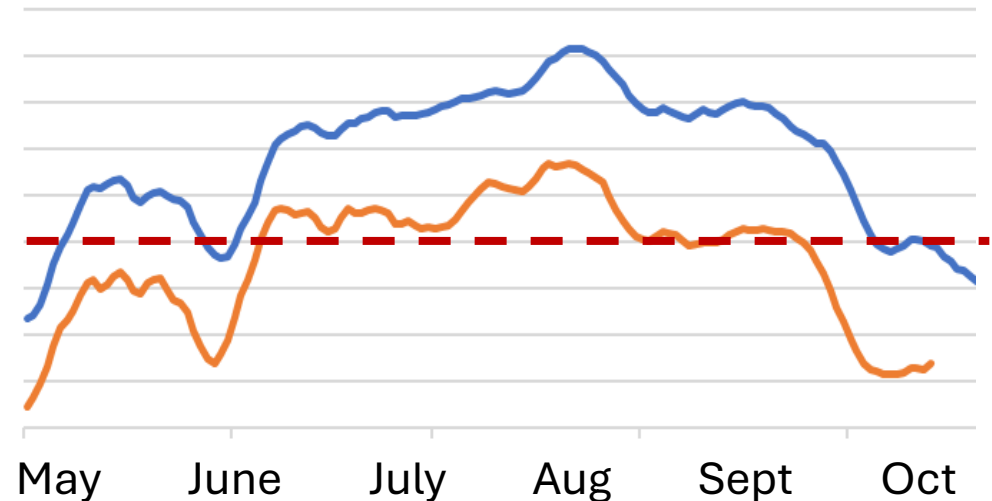


7-day ave. of daily max. (\*C)

Ex. beaver pond @ Occioto – Temp. maintenance



Ex. beaver Pond @ Palmblad – Temp. cooling



— Upstream

— Downstream

--- Instream water quality standard for salmonids



# Beavers Improve Water Quality in Gresham

- Our water quality data informed management decisions to allow beavers to coexist in Gresham
- Non-lethal coexistence strategies have been crucial

