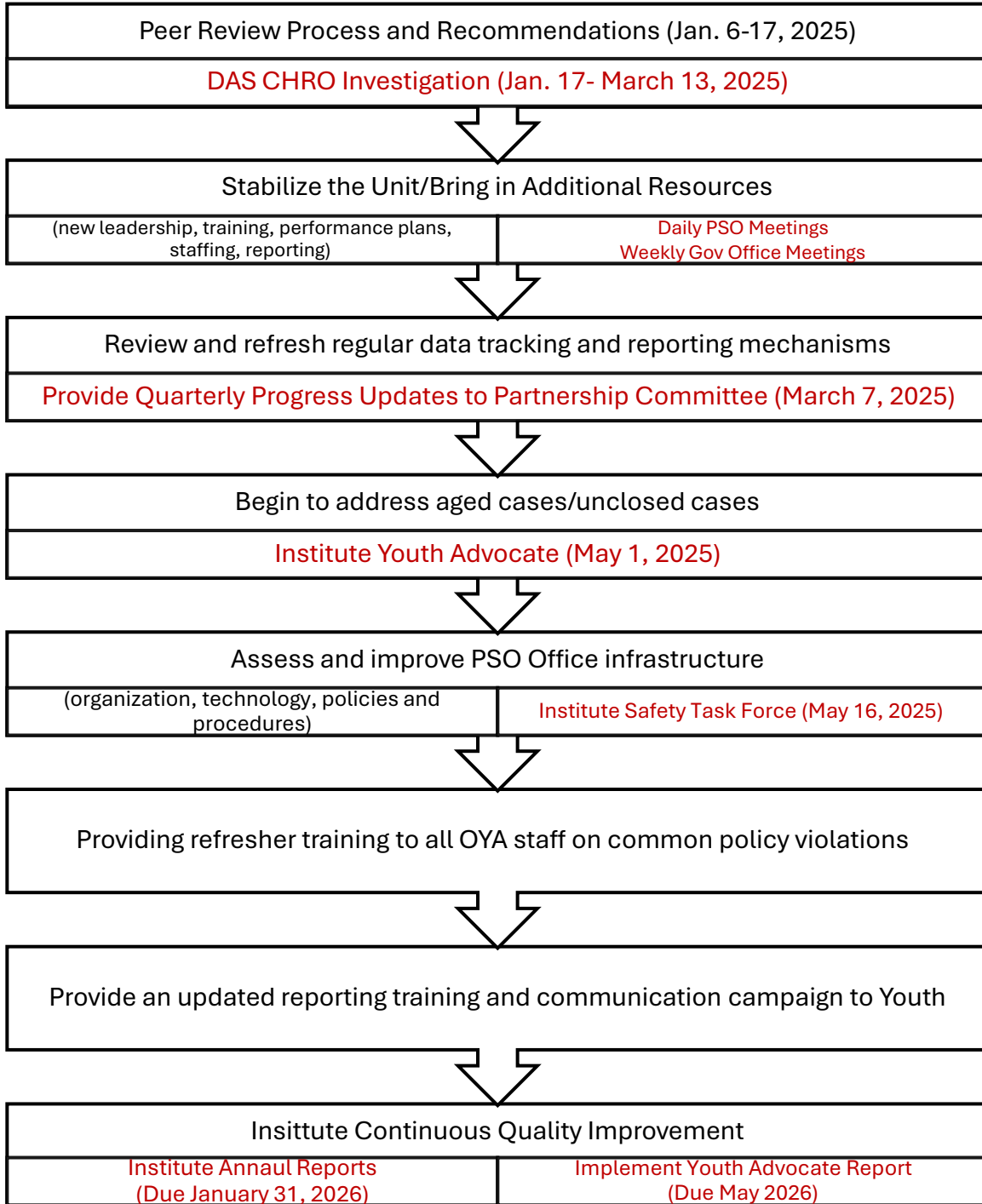


Oregon Youth Authority Performance Standards Office
Project Improvement Plan Overview¹
with Measures Oversight



¹ Note, these are based on the Peer Review and initial implementation. As additional information comes to light this may change to address additional considerations or ensure correct sequencing.

Totals

Change Since Last Week

| Time period | Cases Pending Final Closure by Chief Investigator | Open | Suspended | Cases Pending Final Closure by Chief Investigator | Open | Suspended |
|--------------------------------|---|------|-----------|---|------|-----------|
| Weekly: 3/14/25 - 3/21/25 | 1 | 6 | 0 | 1 | -2 | -1 |
| Month to date | 1 | 19 | 3 | 1 | 0 | -6 |
| (Most recent quarter: 2024 Q4) | 65 | 81 | 26 | 65 | -2 | -4 |
| 2025 | 24 | 58 | 15 | -11 | 16 | 5 |
| 2024 | 394 | 254 | 43 | -6 | -12 | 3 |
| 2023 | 423 | 48 | 21 | 1 | -11 | 10 |
| 2022 | 439 | 55 | 43 | 0 | -29 | 27 |
| 2021 | 484 | 45 | 31 | -1 | -10 | 7 |
| 2020 | 445 | 40 | 21 | 1 | -8 | 8 |
| 2019 | 470 | 8 | 6 | 0 | -3 | 2 |
| 2018 | 579 | 13 | 2 | -52 | 0 | -1 |
| Aged cases -- 2018-Oct 2024 | 3169 | 382 | 141 | -68 | -71 | 60 |
| | | 523 | | | | |

Open and Suspended Case Details

Change Since Last Week

| Time period | Facilities Complaints | Residential Programs or Foster Homes Complaints | Full Investigation Needed | Facilities Complaints | Residential Programs or Foster Homes Complaints | Full Investigation Needed |
|-------------------------------|-----------------------|---|---------------------------|-----------------------|---|---------------------------|
| Weekly: 3/14/25 - 3/21/25 | 2 | 1 | 3 | 0 | 0 | -3 |
| Month to date | 7 | 3 | 12 | -4 | 1 | -3 |
| 2024 Quarter 4: 10/01 - 12/31 | 42 | 15 | 50 | -4 | 0 | -2 |
| 2025 | 23 | 7 | 43 | 4 | 2 | 15 |
| 2024 | 121 | 31 | 145 | -6 | 0 | -3 |
| 2023 | 26 | 12 | 31 | 0 | 0 | -1 |
| 2022 | 27 | 33 | 38 | -2 | 0 | 0 |
| 2021 | 26 | 25 | 25 | -1 | 0 | -2 |
| 2020 | 17 | 0 | 22 | 0 | -22 | 0 |
| 2019 | 6 | 2 | 6 | -1 | 0 | 0 |
| 2018 | 13 | 2 | 0 | 2 | 0 | -3 |
| Aged cases -- 2018-Oct 2024 | 194 | 112 | 217 | -4 | 0 | -7 |
| | | 523 | | | | |