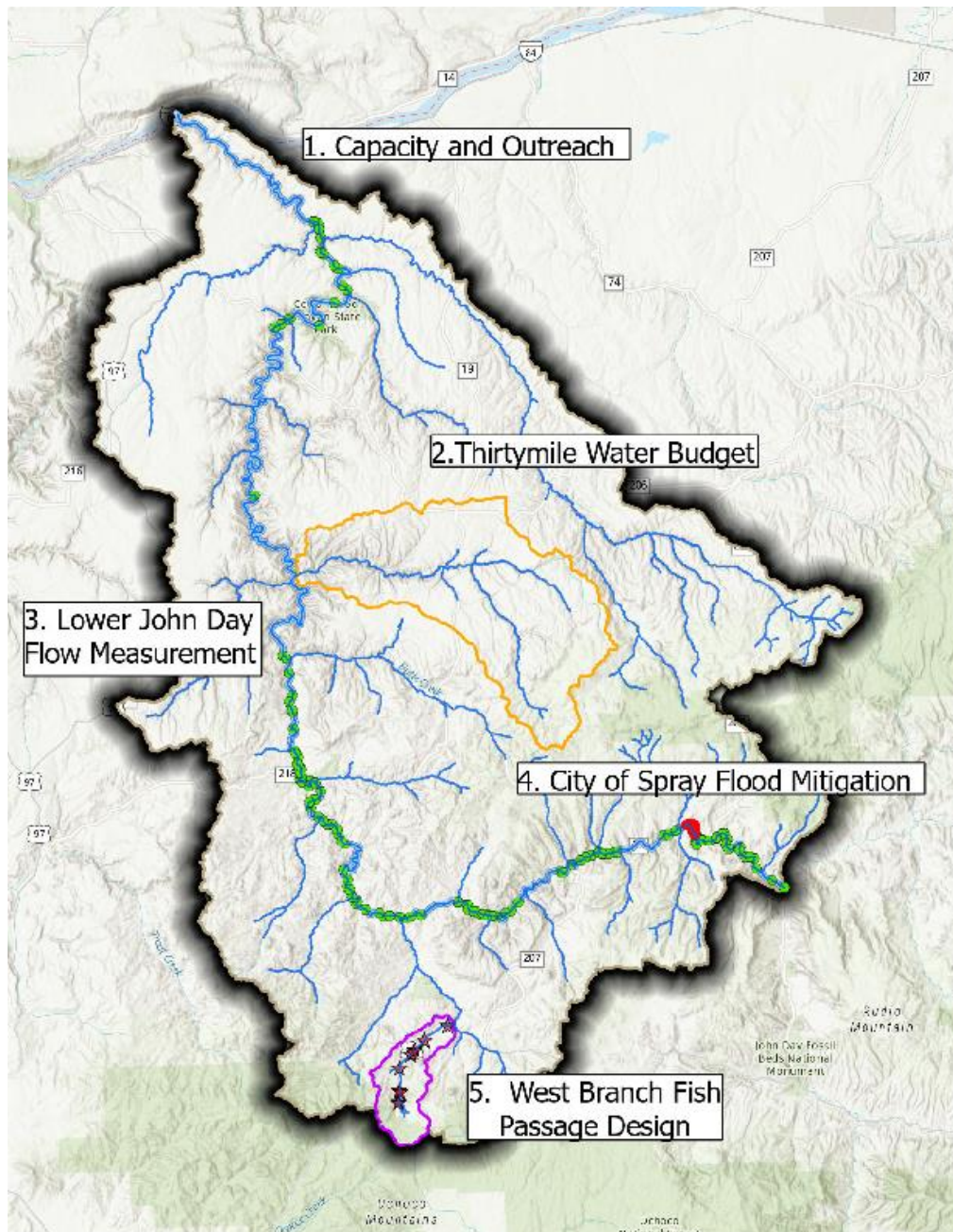


Lower John Day Place-Based Planning Group

- ▶ Who We are
 - ▶ 17 stakeholders
- ▶ Our Achievements
 - ▶ 3 Water Reports
 - ▶ Integrated Water Resource Plan (6/22)
- ▶ Our Approach
 - ▶ Balanced solutions
 - ▶ Top priority water issues
 - ▶ Instream and out of stream needs
- ▶ Our Request
 - ▶ \$1,100,000 implementation funding





- ▶ Capacity & Outreach
- ▶ Thirtymile Water Budget
- ▶ Irrigation Flow Measurement
- ▶ Spray Groundwater Study
- ▶ West Branch Fish Passage

Benefits & Implementation

- ▶ **Critical Issues**
 - ▶ Water quality, riparian habitat, instream flows, irrigation efficiency, municipal resilience
- ▶ **Balanced approach**
 - ▶ Benefitting both agriculture and ecosystem health
- ▶ **Strong partnerships**
 - ▶ Implementation through established local organizations
- ▶ **Maximizes impact**
 - ▶ Targets highest-priority watersheds identified in our plan
- ▶ **Proven record**
 - ▶ Builds on successful restoration work already underway in the basin

