



Presentation to the 2025 Joint Ways and Means Subcommittee on Human Services

# Child Welfare Permanency Budget Review

---

Aprille Flint-Gerner, Director, ODHS Child Welfare

March 19, 2025

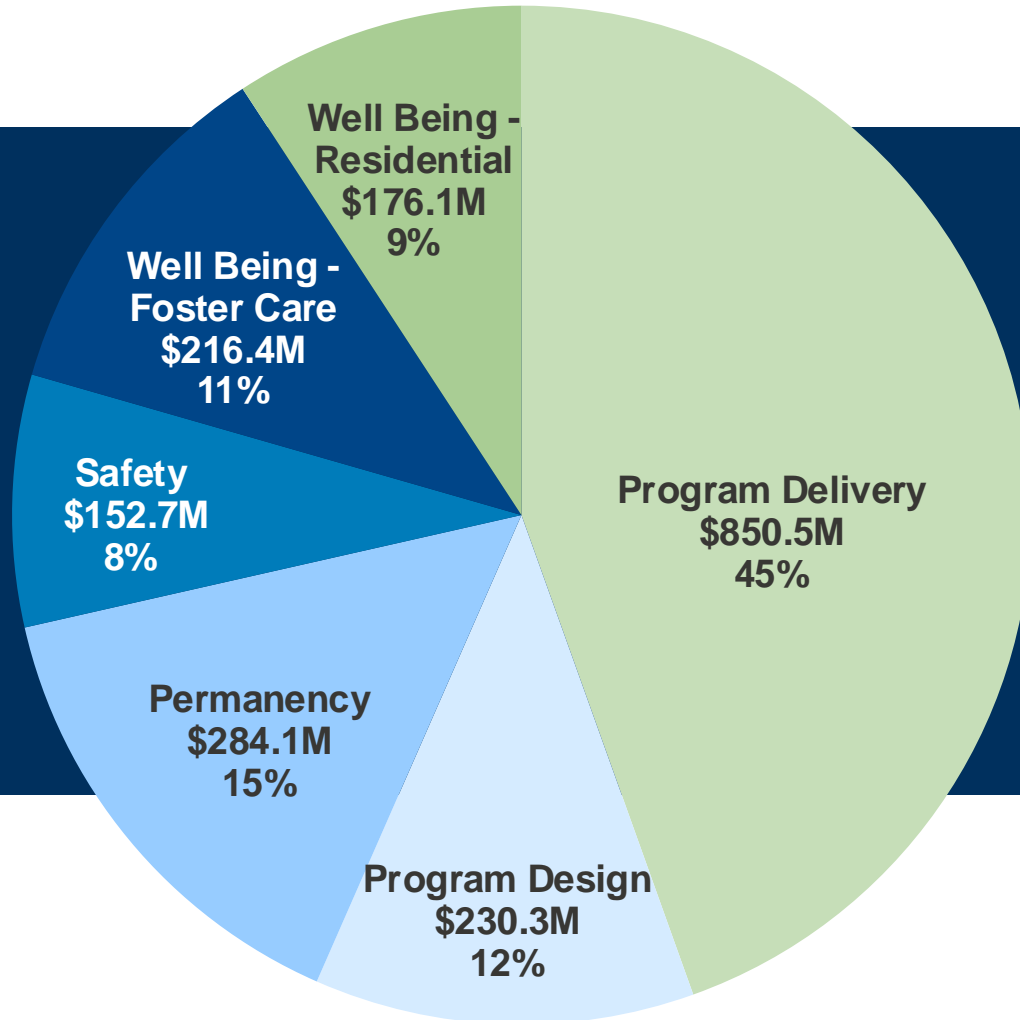
# Agenda

- I. **Budget overview**
- II. Adoption and Guardianship
  - I. Permanency Budget
  - II. Programs
  - III. Outcomes
  - IV. Key issues
- IV. Closing remarks

# 2025-27 Governor's Budget: Total Child Welfare budget by Adoption/Guardianship

**Child Welfare  
total budget  
\$1.9 billion**

**Permanency  
budget: \$284.1M y**



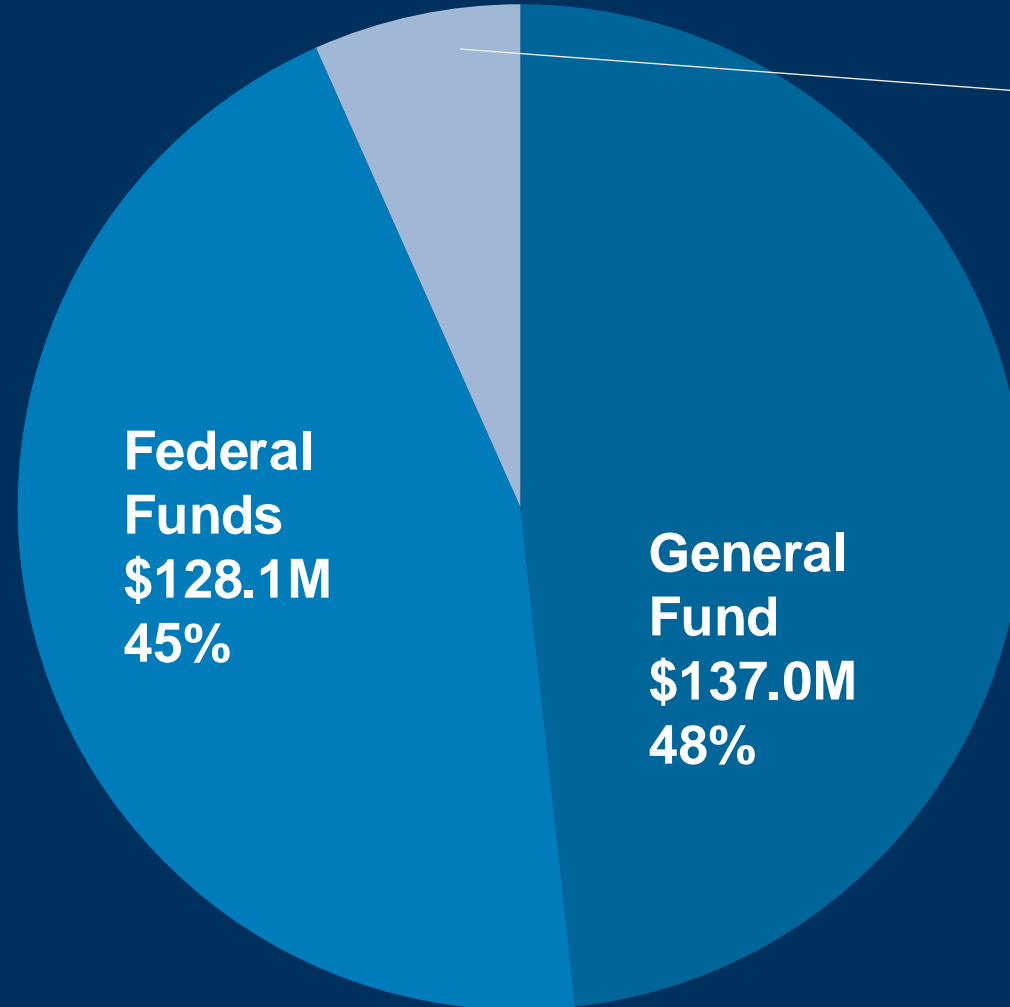
# Agenda

- I. Budget overview
- II. Adoption and Guardianship**
  - I. Permanency Budget**
  - II. Programs**
  - III. Outcomes**
  - IV. Key issues**
- IV. Closing remarks

# Adoption/Guardianship: Permanency Budget Funding split

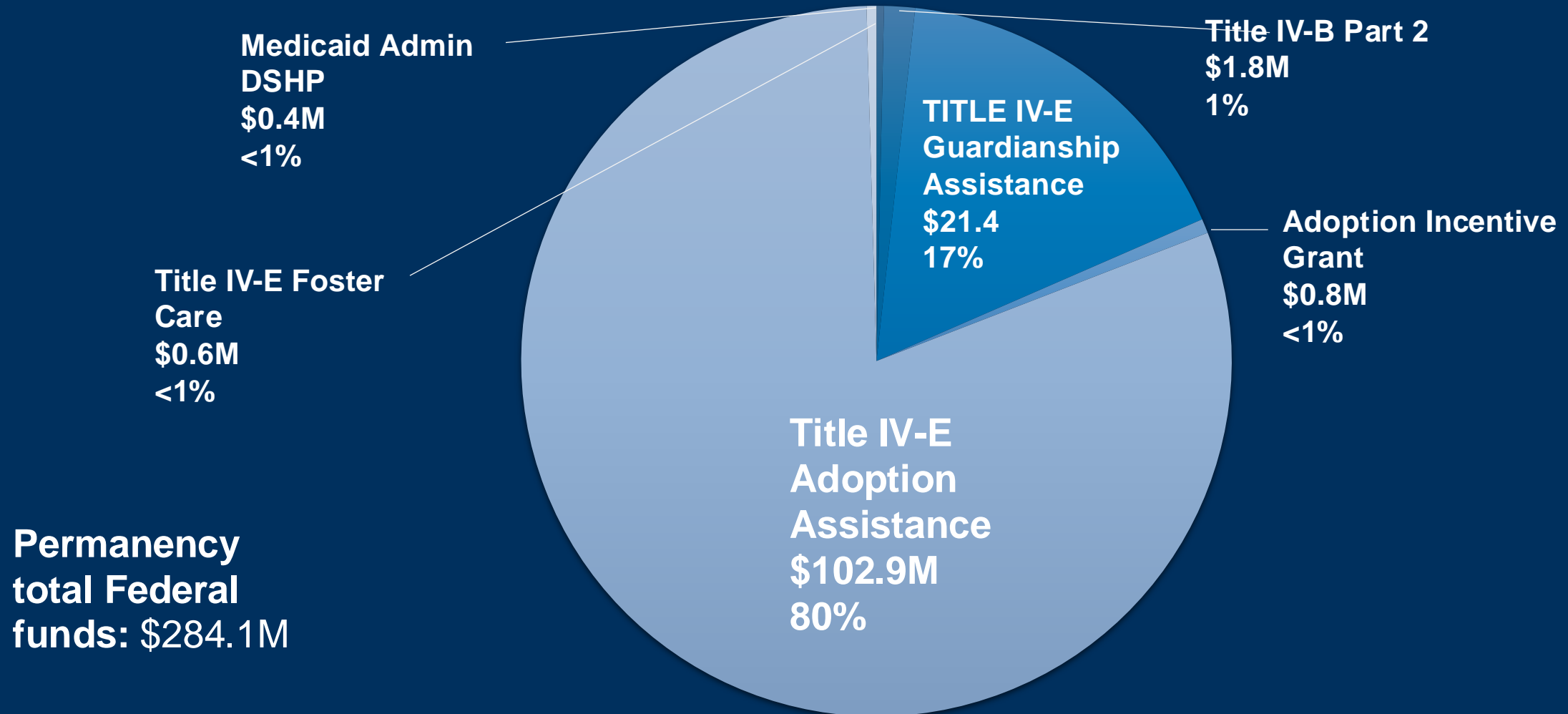
---

**Permanency total  
GB funds: \$284.1M**



**Other Funds  
\$19.0M  
6%**

# Adoption Guardianship Services Permanency Budget Federal Funds



## Child Welfare Permanency DCRs



**Adoption Assistance**  
\$204.8M

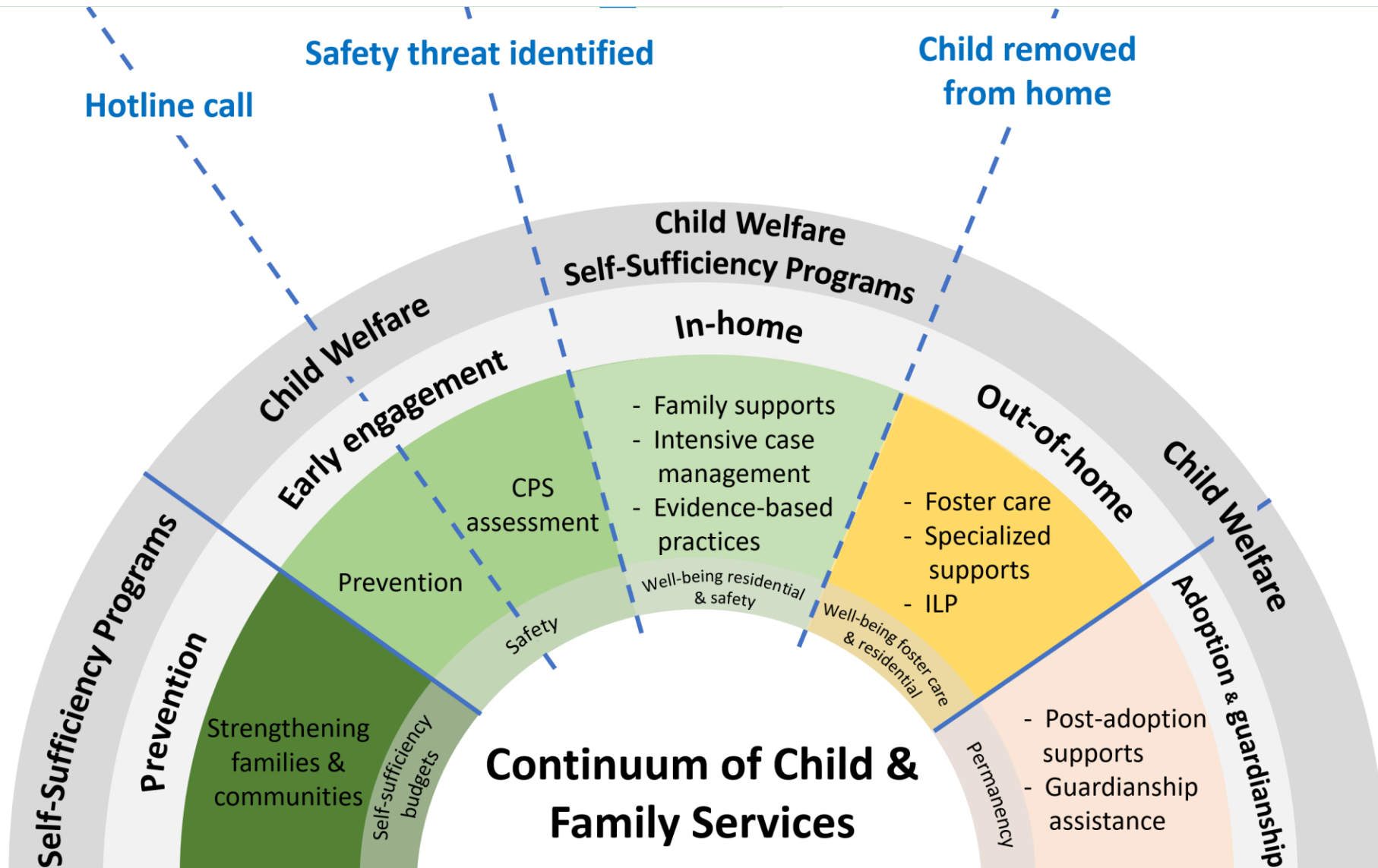
**Guardianship Assistance**  
\$53.2M

**Post Adoption Services**  
\$19.8M

**Contracted Adoption Services**  
\$4.2M

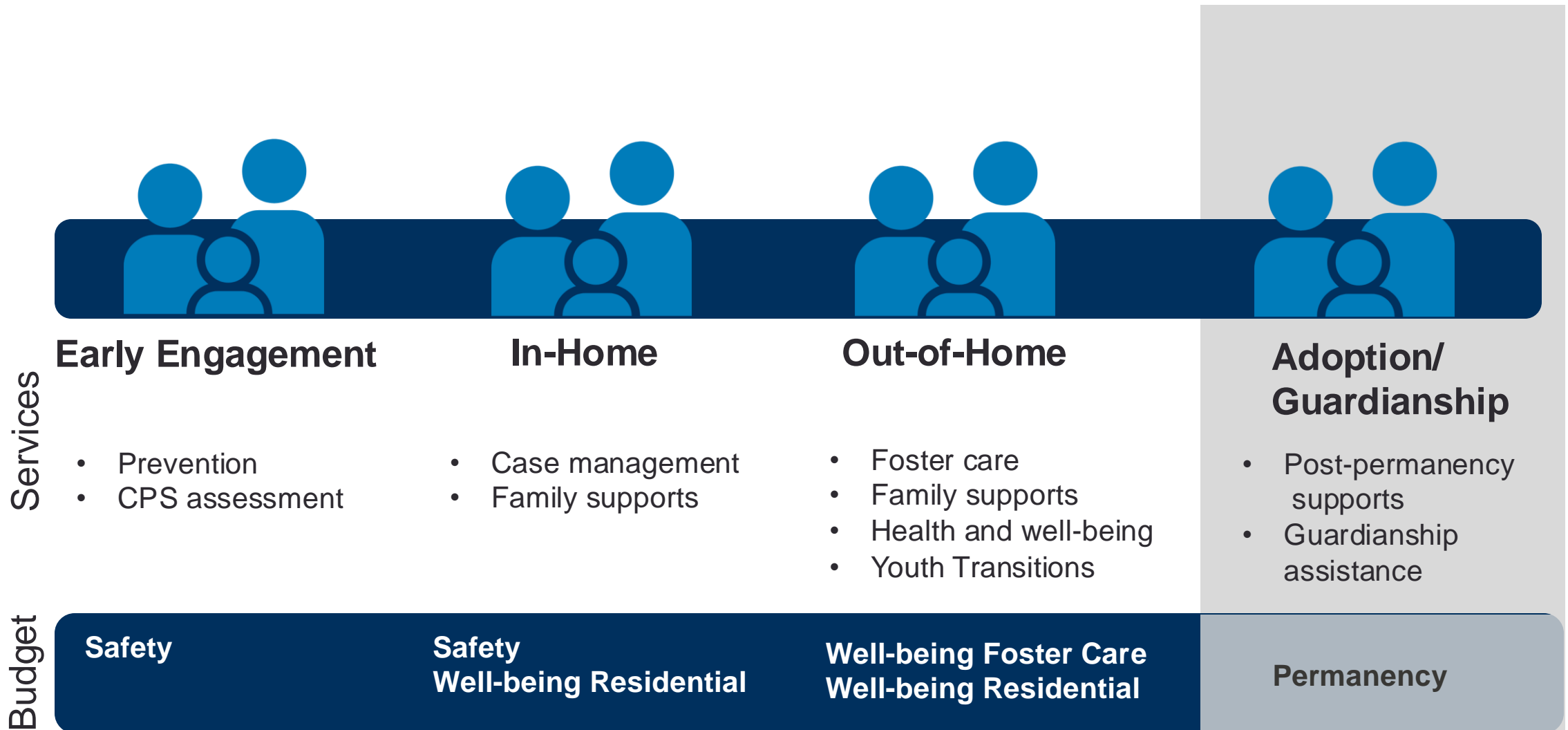
**Adoption Supports**  
\$1.9M

# Child Welfare: How we work



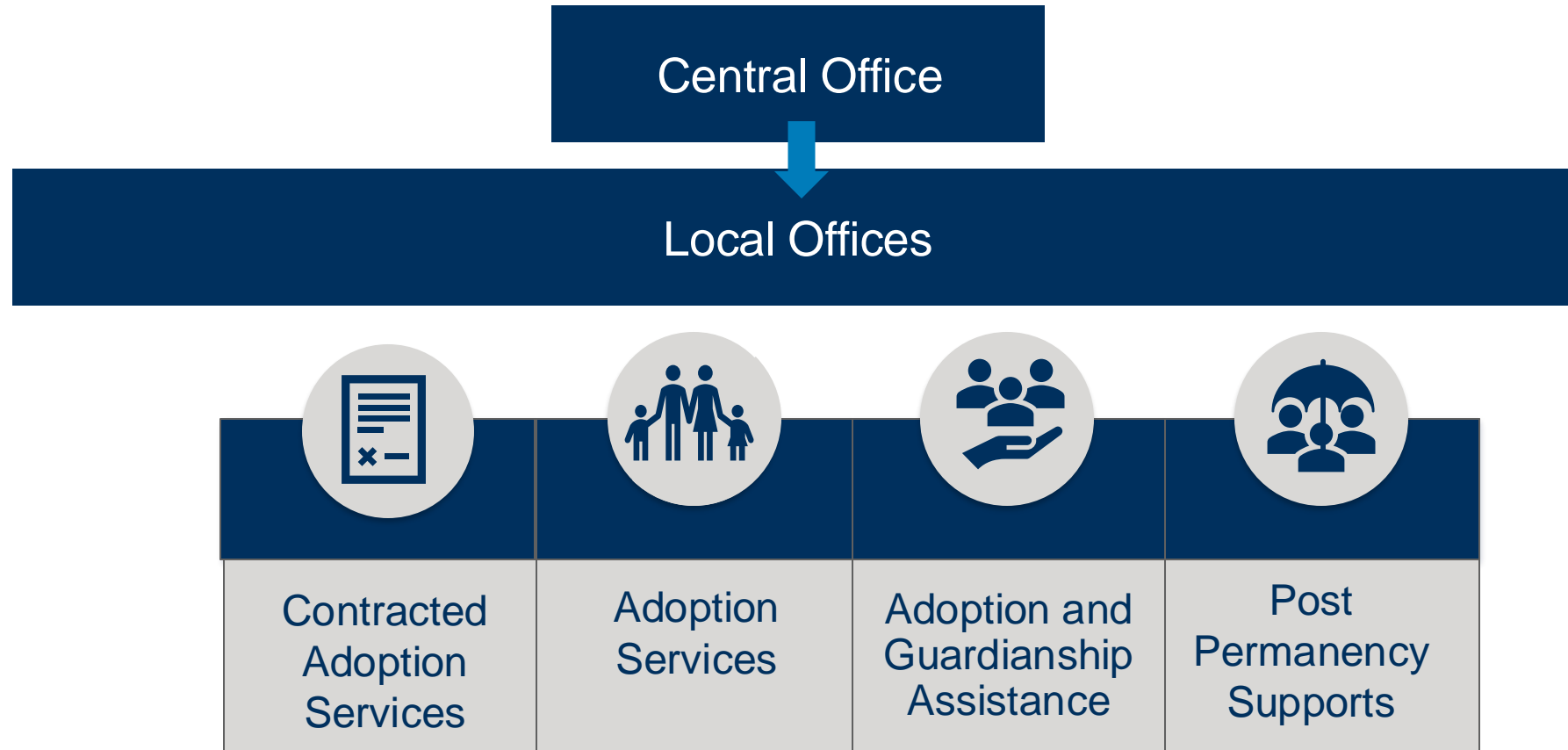


# Child Welfare Continuum of Services: Adoption/Guardianship



# Child Welfare Permanency Services

---



# Child Welfare Permanency Services

---



Contracted  
Adoption  
Services

Adoption  
placement and  
supervision  
services

Mediation  
services



Adoption  
Services

Consultation,  
training and  
collaboration to  
support  
completion of  
quality and  
timely adoptions  
(see KPM)



Adoption and  
Guardianship  
Assistance

Financial and  
medical assistance  
to families post  
finalization



Post  
Permanency  
Supports

ORPARC

Family & Individual  
services

Education & Training  
programs and  
equipment

Adoption Search and  
Registry

# Adoption/Guardianship priorities

---

## Key priorities

- Legal and relational permanence for all
- Quality placement capacity and services
- Capacity-building for youth with complex needs

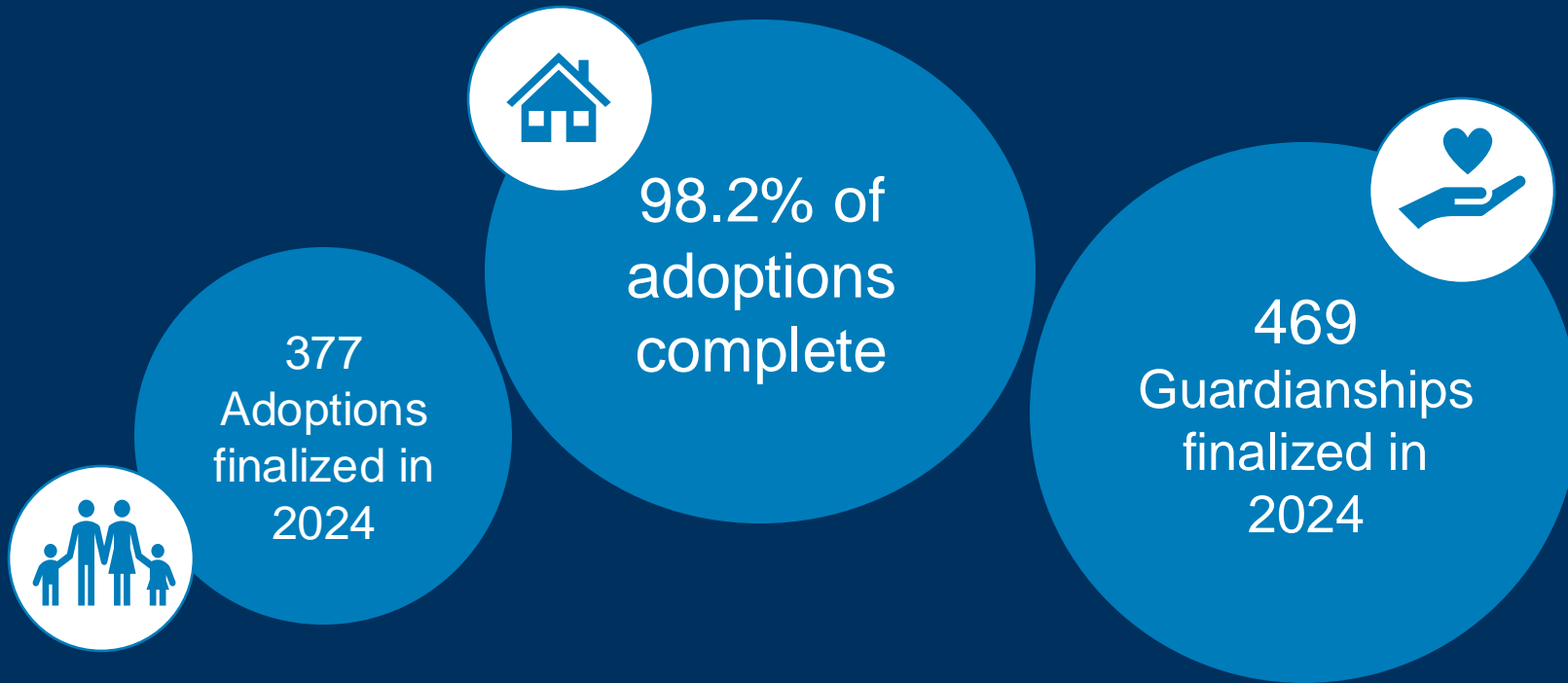
## Key challenges

- Competing values family vs. stranger care
- Service array and lack of shared accountability across child serving partnerships
- Complexity of dependency court process

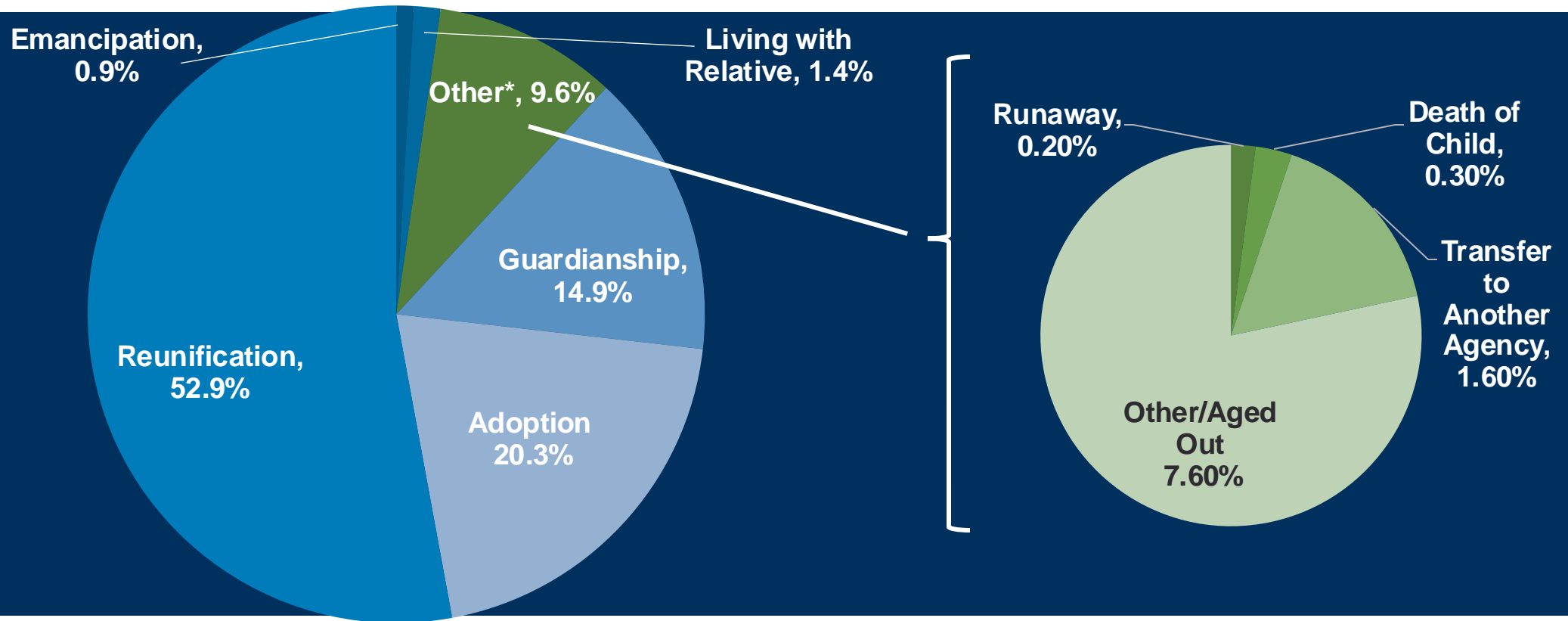


# Adoption/Guardianship Outcomes

---



# Exits from foster care FFY 2023













Questions?

---

Thank you.

