

OREGON HOUSING AND COMMUNITY SERVICES

Emergency Homelessness Response Update



Mar. 11, 2025

Liz Weber (she/her), Director of Housing Stabilization Division

Mike Savara (he/him), Special Initiatives Advisor

Changing lives through the Emergency Response

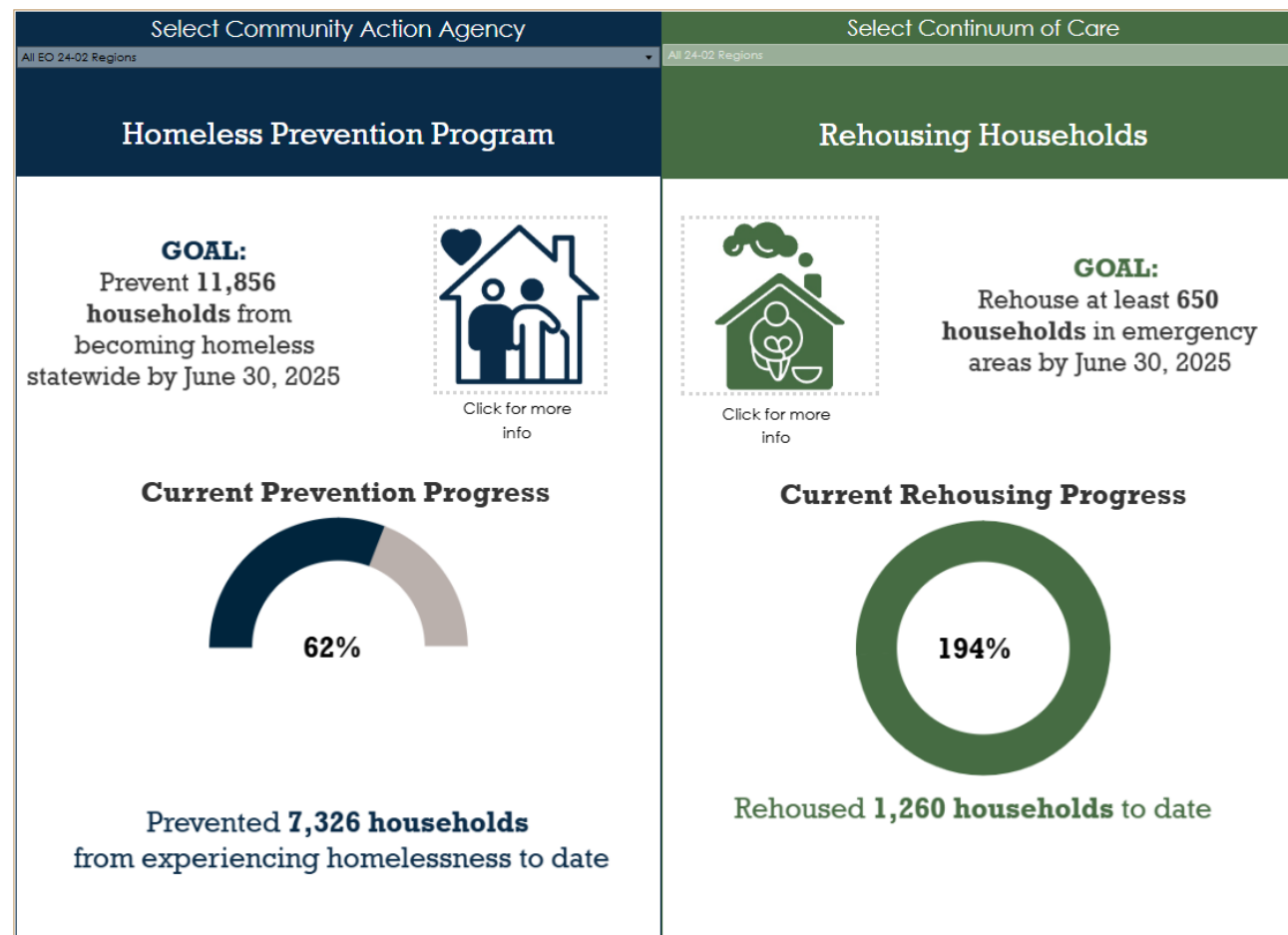
ARCHES Nest is a Salem shelter for houseless families operated by the Mid-Willamette Valley Community Action Agency (MWVCAA) that offers:

- 18 private rooms, accommodating up to 36 individuals, including infants, children, and parents
- Essential services such as meals, supportive case management, housing navigation, Head Start, onsite mental health services, and access to community resources
- The ability for families to transition from homelessness to stable housing and self-sufficiency



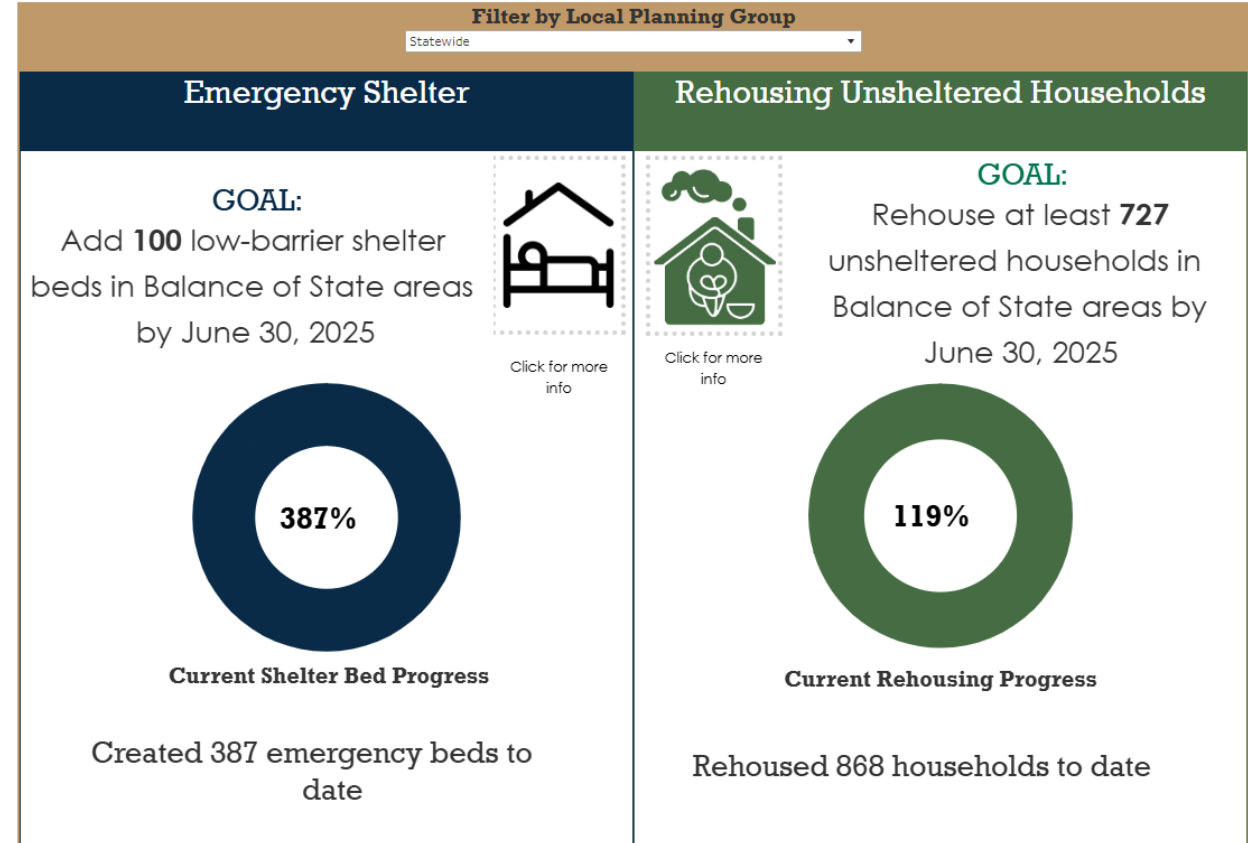
Building On What Works – EO 24-02

- Dashboard last updated Feb. 27, 2025, and reflects regions' progress toward rehousing and eviction prevention goals through Dec. 31, 2024.
- EO 24-02 regions surpassed collective rehousing goal - on track to achieve prevention goals by end of biennium.



Balance of State Dashboard

- Partners in the Balance of State have exceeded collective shelter and rehousing goals.
- Rehousing goals and actuals include ORI and HB 5019 households.
 - ORI rehousing goals for Clatsop, Linn, and Malheur Counties will be displayed on EO 24-02 dashboard.
- Dashboard last updated Feb. 27, 2025, and reflects regions' progress towards rehousing and shelter goals through Dec. 31, 2024.



Partnerships and Technical Assistance



OHCS and its partners have provided virtual and on-the-ground trainings, workshops and webinars across the state.

Community Highlight:

Linn County and Sweet Home Homeless Services Workshop

2023-2025 Homelessness Response Impact

Governor Kotek's emergency homelessness response has invested in:

- A sustainable, outcomes-based, statewide shelter program,
- Oregon's Rehousing Initiative
- Rental assistance programs to prevent families from falling into homelessness

By the end of this biennium, the homelessness initiative is projected to:

Support over
4,800
shelter beds



Rehouse
3,300
households

2025-27 Governor's Recommended Budget: Housing Stabilization Division

Homelessness: Infrastructure to stabilize partnerships to forge ahead

- Maintain support for shelter operations and housing-focused supports
- Extend the Oregon Rehousing Initiative to sustain rehousing goals and serve additional households/long-term rental assistance
- Preventing over 20,000 evictions
- Tribal housing and homelessness response

HB 3644 Statewide Shelter Program Bill:

- Creates and maintains a unified statewide shelter system
- Adopts policy recommendations from Sustainable Shelter Workgroup
- Improve data collection and reporting practices



Questions?



Reference Slides



Spend-Down Percentages:

Grant funds allocated and expended through Dec. 31, 2024

Region or Program	Legislative Funding Bill	Total Allocated	Total Expended	Total % Expended
MACs (Includes shelter & rehousing)	HB5019	\$60,548,398	\$44,932,976	74.21%
	SB5511	\$61,882,408	\$15,292,310	24.71%
LPGs (Includes shelter & rehousing)	HB5019	\$26,035,001	\$11,535,490	44.31%
	SB5511	\$1,500,000	\$567,583	37.84%
Long-Term Rent Assistance (LTRA: includes only MAC Regions)	SB5511	\$37,991,350	\$2,324,931	6.12%
Oregon Rehousing Initiative (ORI: statewide rehousing)	SB5701	\$31,335,350	\$1,853,289	5.91%
Community Action Agencies (OREDAP: statewide eviction prevention)	HB5019	\$26,862,114	\$26,730,240	99.51%
	SB5511	\$27,769,999	\$14,286,108	51.44%
	SB1530	\$19,040,000	\$2,796,193	14.69%
EPRR (Statewide Eviction Prevention)	HB5019	\$6,720,000	\$6,720,000	100.00%
	SB5511	\$9,680,000	\$9,463,515	97.76%
	SB1530	\$4,700,000	\$4,532,736	96.44%

MAC Group Reporting (Jan. 11, 2024 – Dec. 31, 2024) (EO 24-02)

Region	EO 24-02 Rehousing Goal (HB 5019 Pipeline)	EO 24-02 Rehousing Goal (ORI)	Total EO 24-02 Households Rehoused as of 12/31/24
OR-500 - Eugene/Springfield/Lane County CoC	17	110	539
OR-501 - Portland/Gresham/Multnomah County CoC	52	100	200
OR-502 - Medford, Ashland/Jackson County CoC	50	50	39
OR-503 - Central Oregon CoC	100	60	126
OR-504 - Salem/Marion, Polk Counties CoC	163	120	209
OR-506 - Hillsboro/Beaverton/Washington County CoC	---	60	29
OR-507 - Clackamas County CoC	64	75	109
Clatsop County (Opt-In Region)	---	40	0
Linn County (Opt-In Region)	---	30	9
Malheur County (Opt-In Region)	---	20	0
Total	446	665	1,260

Balance of State Regions: Goals to Be Met by June 30, 2025; and Actuals through Dec. 31, 2024

Balance of State (Local Planning Groups)	HB 5019 Rehousing Goal	ORI (SB 5701) Goal	Total Households Rehoused as of 12/31/24	HB 5019 Shelter Bed Creation Goals	Shelter Beds Created as of 12/31/24
Benton County	31	20	29	50	50
Clatsop County	33	40	100	80	80
Columbia County (CAT)	20	20	101	-	-
Coos County	32	32	32	8	0
Curry County	14	8	44	-	-
Douglas County (UCAN)	34	23	40	-	-
Hood River, Wasco, and Sherman Counties (MCCAC)	29	20	33	34	34
Josephine County (UCAN/IVLS)	31	20	132	16	0
Klamath and Lake Counties (KLCAS)	38	25	5	-	-
Lincoln County	16	15	17	70	42
Linn County	32	30	54	30	72
Malheur and Harney Counties	34	20	39	32	74
Tillamook County	12	10	24	20	13
Umatilla, Morrow, Wheeler and Gilliam Counties (CAPECO)	40	30	95	25	0
Wallowa, Union, Baker, and Grant Counties (CCNO)	33	24	74	-	-
Yamhill County (YCAP)	21	30	62	14	22
TOTALS	450	367	868	309	387

Prevention Goals: SB 5511/SB 1530 (ORE-DAP)

Community Action Agencies (CAAs)	SB 5511 Prevention Goal	SB 1530 Prevention Goal	Total Households Goals	Total Households Served as of 12/31/24
ACCESS – Jackson	255	149	404	316
CAO - Washington	349	204	553	636
CAPECO - Umatilla, Gilliam, Morrow, Wheeler	198	116	314	97
CAT - Clatsop, Columbia	352	206	558	315
CCNO - Baker, Grant, Union, Wallowa	123	72	195	161
CCSSD - Clackamas	476	278	754	594
CINA - Malheur, Harney	80	47	127	118
CSC - Lincoln, Linn, Benton	500	292	792	438
KLCAS - Klamath, Lake	175	102	277	63
KLCAS-Curry - Curry	40	23	63	52
LCHHS - Lane	453	264	717	470
MCCAC - Hood River, Sherman, Wasco	116	68	184	81
MULTCO - Multnomah	1,033	891	1,924	555
MWVCAA - Marion, Polk	697	407	1,104	621
NIMPACT - Crook, Deschutes, Jefferson	290	169	459	240
OHDC - Underserved communities & agricultural workers	497	290	787	561
UCAN - Douglas, Josephine	250	146	396	240
UCAN-Coos - Coos	130	76	206	53
YCAP - Yamhill	164	96	260	107
PPL-EP RR			1,782	1,608
TOTALS	6,178	3,896	11,856	7,326