

**worksource**  
**OREGON**



**OREGON WORKFORCE**  
PARTNERSHIP

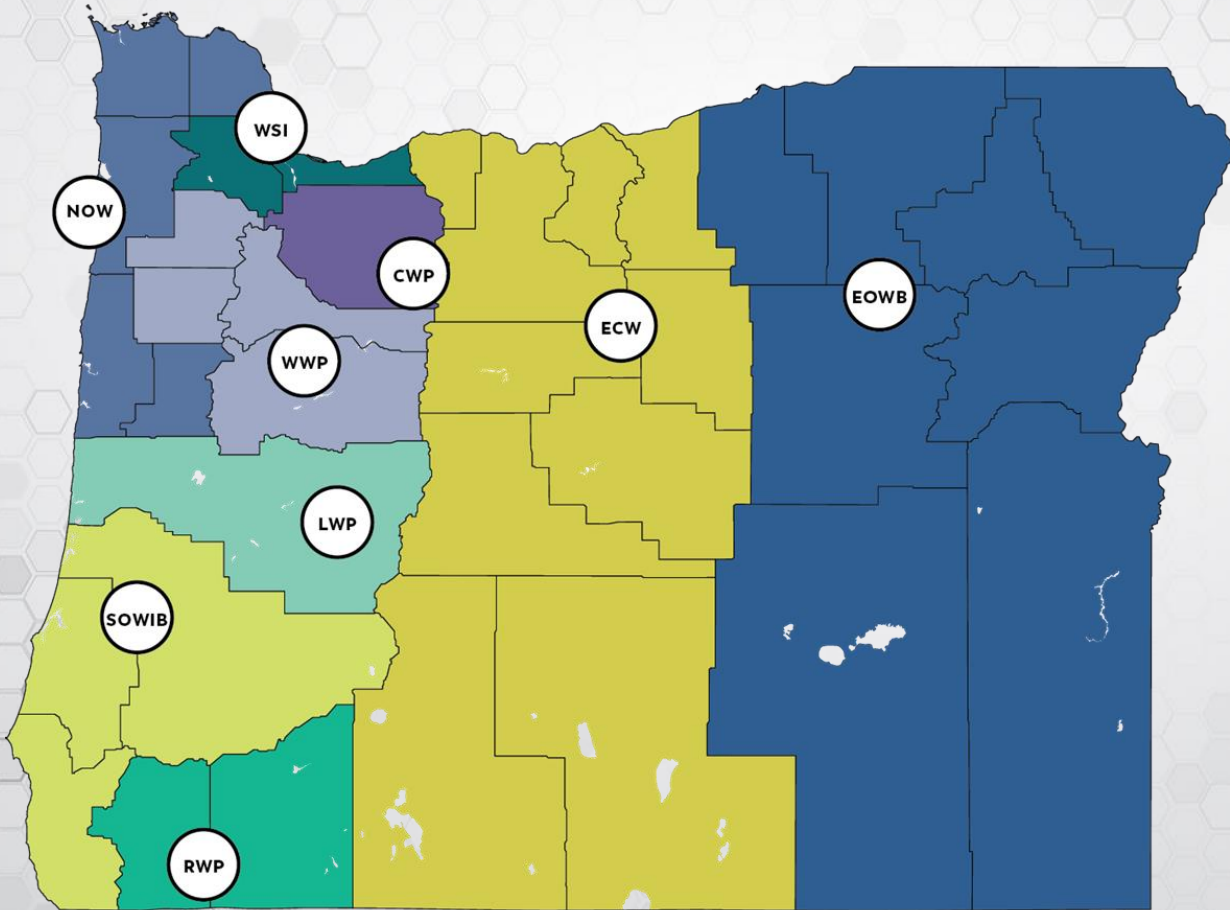
# Building on the Success of Prosperity 10K

LOCAL WORKFORCE BOARDS &  
WORKSOURCE OREGON



PRESENTED BY Kim Parker-Llerenas

# LOCAL WORKFORCE BOARDS





50% Local Business and Private Sector



20% Labor and Apprenticeship



Education and Training

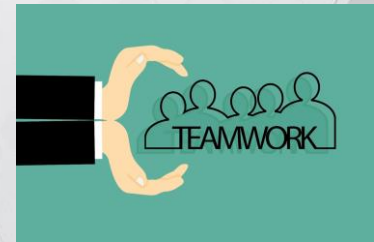


Government, Economic, Community  
Development

Plus, Other Category (Per CLEO)

113 Private-sector  
businesses sit on our  
LWBs

Engage with an additional  
927+ businesses in high-  
growth, living-wage  
occupations and  
industries



**We are the LOCAL table that brings all groups together**



# Prosperity 10,000 (P10K) Overview and Outcomes



# WHO ARE THE PRIORITY POPULATIONS?



- Communities of color (45%)
- Women (45%)
- Low-income communities (40%)
- Rural and frontier communities (41%)
- Veterans (3%)
- Persons experiencing disabilities (10%)
- Incarcerated and formerly incarcerated individuals (14%)
- Members of Oregon's nine federally recognized Indian tribes (1%)
- Individuals who disproportionately experience discrimination in employment based on age (57%)
- Individuals who identify as members of the LGBTQ+ community (4%)

*\*Percentages are self-reported to-date and not final*

# WHY P10K WORKED!



- **Fast-tracked funding**
- **Focused on priority populations**
- **Locally developed and managed programs**
- **Flexible funding to meet the needs of individual communities**
- **Local boards have a track record of success**

# P10K SUCSESSES \*TO-DATE



**Program Completion**  
**Goal: 80%**  
**Outcome: 88%**



**Participants Employed**  
**Goal: 75%**  
**Outcome: 74%**



**Women Enrolled**  
**Goal: 50%**  
**Outcome: 47%**



**Wage Over \$17/hour**  
**Goal: 75%**  
**Outcome: 89%**

# **P10K SUCSESSES \*TO-DATE**

- **Total served as of 1/31/25 is 6,155**
- **96% of those served identified with at least one priority population**
- **Average hourly wage is \$23.85**
- **Funding allowed for new programming with new community partners, serving people we haven't served before.**



# Thank you!

**worksource**  
**OREGON**



**OREGON WORKFORCE**  
PARTNERSHIP