

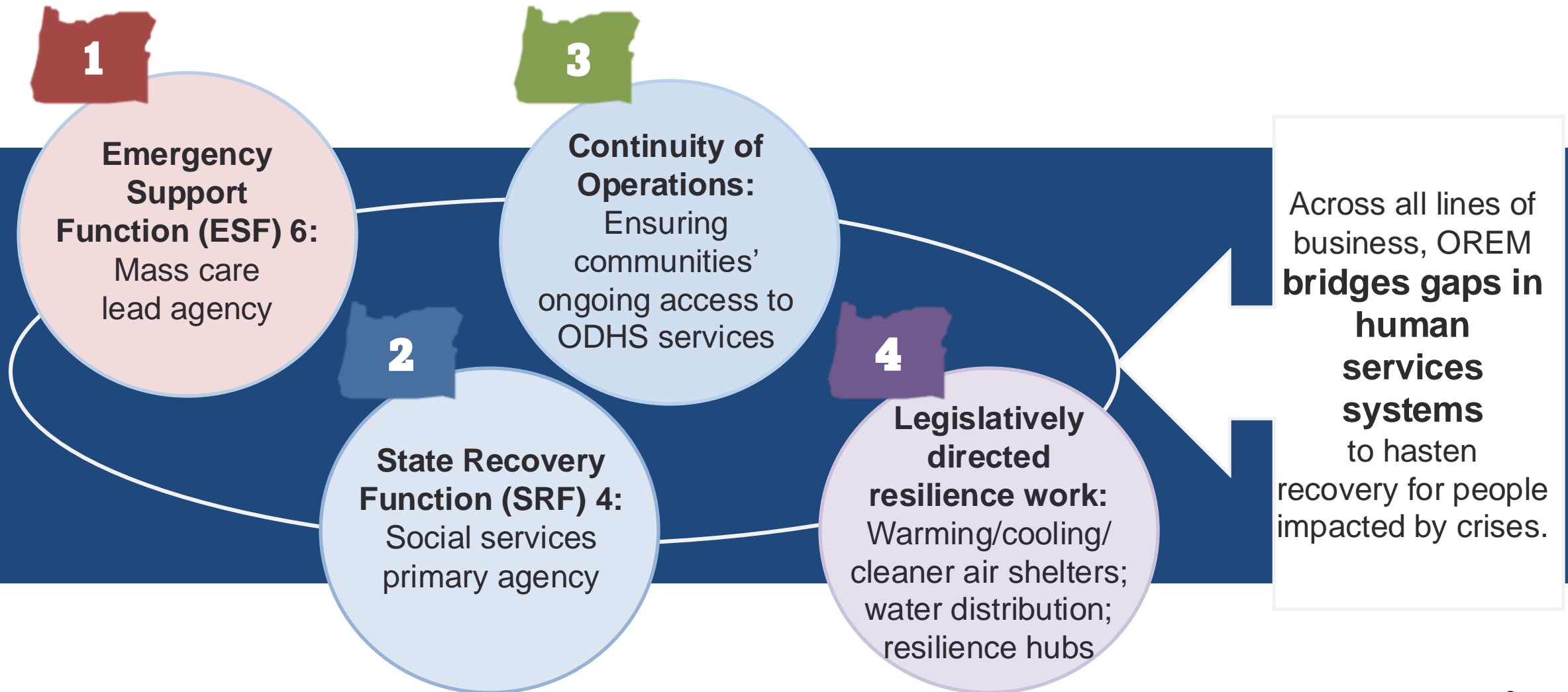
Presentation to the House Committee on
Emergency Management, General Government,
and Veterans

Office of Resilience and Emergency Management (OREM) overview

Ed Flick, Director, ODHS Office of Resilience and Emergency Management

March 4, 2025

OREM's primary lines of business



State structure

- 18 Emergency Support Functions coordinated by OEM
- ODHS is one of 33 agencies with emergency management roles
- ODHS leads ESF 6: mass care
- ODHS also leads social services recovery

The role of state agencies is to support the needs of local communities.



Oregon Emergency Support Functions (ESFs)



ESF 1
Transportation



ESF 2
Communications



ESF 3
Public Works



ESF 4
Firefighting



ESF 5
Information and
Planning



ESF 6
Mass Care



ESF 7
Resource
Support



ESF 8
Health and
Medical



ESF 9
Search and
Rescue



ESF 10
Hazardous
Materials



ESF 11
Agriculture, Animals,
and Natural Resources



ESF 12
Energy



ESF 13
Law Enforcement



ESF 14
Business and
Industry



ESF 15
Public
Information



ESF 16
Volunteers and
Donations



ESF 17
Cyber and Critical
Infrastructure
Security



ESF 18
Military
Support

Key statutory responsibilities

ORS 409.010(2):

xx

The department is responsible for the delivery and administration of programs and services relating to...

(c) Persons who, as a result of the person's or the person's family's economic, social or health condition, require financial assistance or other social services;

(h) [a]ll other human service programs and functions delegated to the department by or in accordance with the provisions of state and federal law.

ORS 431A.410(2):

Establishes support to emergency spaces that provide cleaner air, warming or cooling.

ORS 431A.412:

Identifies ODHS as “the lead state agency for supporting operations for spaces that provide cleaner air, warming or cooling...”



ORS 409.760:

xx

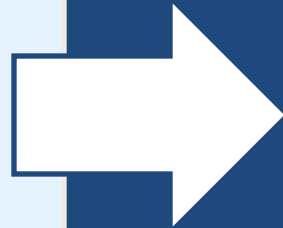
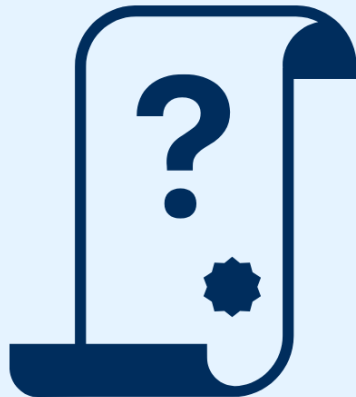
The Department of Human Services shall, in consultation with the State Department of Energy and the Oregon Health Authority, provide grants, support and technical assistance for Resilience Hubs and Networks in Oregon.



Risks:

Gaps in statutory authority hinder our mission

**OREM lacks
precise statutory
direction**



This constrains our ability to swiftly support communities and/or initiate contracts for emergency-related supports, which creates roadblocks for local entities that stand ready to serve their communities during and after disasters.

These roadblocks can **keep survivors waiting too long to get the help they need.**



Policy recommendations: HB 2346

Oregon communities deserve swift and equitable human services supports when emergency strikes. To meet this need, ODHS recommends that OREM be granted the **statutory authority** to:

1. Establish **specific authorities to act to reduce the impacts of disasters** on communities and be better prepared for the future.
2. **Assist applicable authorities** in identifying and locating vulnerable individuals and communities needing advance notice and additional assistance related to evacuation.
3. Provide mass care and human services through **grants, contracting, rule making, equipping and direct support**.
4. Authority to establish a state **individual assistance program**, support households with **long term shelter and recovery housing**.



Questions?





Questions?
