

CRITICAL ENERGY INFRASTRUCTURE [CEI] HUB



Nikki Mandell, on behalf of the CEI Hub Task Force
and a broad coalition of concerned neighborhood and community groups
nikki.mandell@gmail.com

PUBLIC EDUCATION

- **Rumble on the River public forums** with panels of experts, co-sponsored by 40 orgs
- **Presentations to Portland Neighborhood Associations and community groups**
- **Meetings and presentations to statewide organizations**
- **Websites**
- **Documentaries**
- **Social media**
- **Radio**
- **Public gallery**
- **Billboards**
- **Walking tours**
- **Community safety petition**



CEI Hub Natural Hazards

Superfund Site

Liquefaction
Shoreline

Railroad Tracks

Portland Hills Fault

CSZ Zone &

Landslides

Population's
HazMat
Exposure

Wildland
Urban
Interface

Google Earth





Press Conference & Community Letter
April 16, 2024

Dear Governor Kotek, DEQ Director Feldon, Members of the Portland City Council, ...the Oregon Legislature, ...

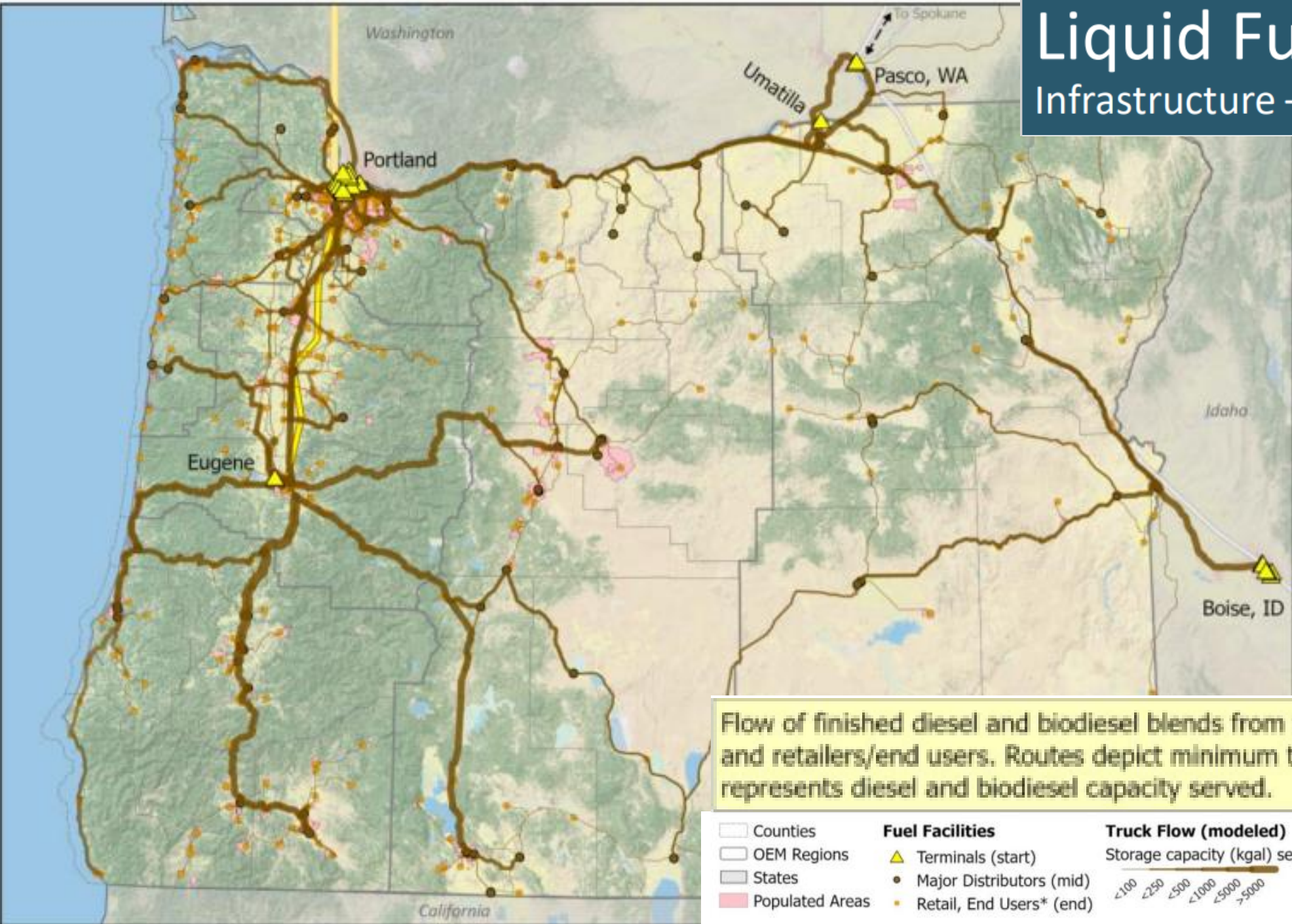
- **Develop a new plan for Oregon's fuel storage. All communities must have opportunities to participate (HB 3450)**
- **Require companies who operate within the CEI Hub to assume full financial responsibility for addressing potential disaster prevention, emergency services, clean-up and restoration. (HB 2949)**

Liquid Fuels

Infrastructure – Diesel Distribution



ODOE, Energy Security Plan, 2024

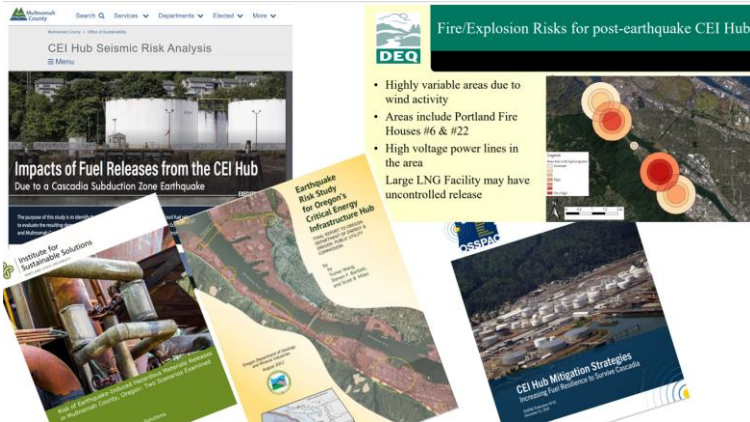


Flow of finished diesel and biodiesel blends from terminals to fuel distributors and retailers/end users. Routes depict minimum trucking time and width of lines represents diesel and biodiesel capacity served.

<ul style="list-style-type: none">CountiesOEM RegionsStatesPopulated Areas	Fuel Facilities <ul style="list-style-type: none">Terminals (start)Major Distributors (mid)Retail, End Users* (end)	Truck Flow (modeled) Storage capacity (kgal) served <ul style="list-style-type: none"><100<250<500<1000<5000>5000	Pipeline Flow <ul style="list-style-type: none">WithinIntoThrough, Out	<small>* Fuel storage (in above ground and underground storage tanks) is totaled by populated place, and located at representative central site for routing.</small>
---	--	--	---	--

CEI HUB

From Dangers



To Policy Action

HB 3450, HB 2949,
HB 2152, HB 2151

Old, seismically unfit fuel storage tanks

Fuel Tank Seismic Stability Program (SB 1567, 2022)

Communities unprepared for a CEI Hub disaster

Fuels for Disaster Response (HB 2152)

Geographically diverse fueling stations

Mitigation Fund (HB 2151)

Expand Allowable Uses

Public & taxpayers liable for costs due to private facility failure

Financial responsibility borne by the business, not taxpayers

Study viability (HB 2949 & HB 3450)

Required by EPA of all Underground Storage Tanks [USTs]

States responsible for Above Ground Tanks [ASTs]

90%+ of OR's fuels concentrated in super high-risk location

Safe, Resilient Storage amidst Changing Fuel Needs (HB 3450)

Replace piecemeal actions with wholistic, long-term solution

Engage stakeholders, experts, affected communities, govts.