

Oregon's Fuel Sector Improvements: *Testimony Supporting HB-2151, 2152, 2949 and 3450*

^s
2025 HEMGGV Committee
February 27, 2025

Yumei Wang, PE, F.ASCE

Portland State University

Senior Advisor on Infrastructure Resilience and Risk

Affiliate Faculty in Civil and Environmental Engineering

SLS LLC owner; consultant on federal projects

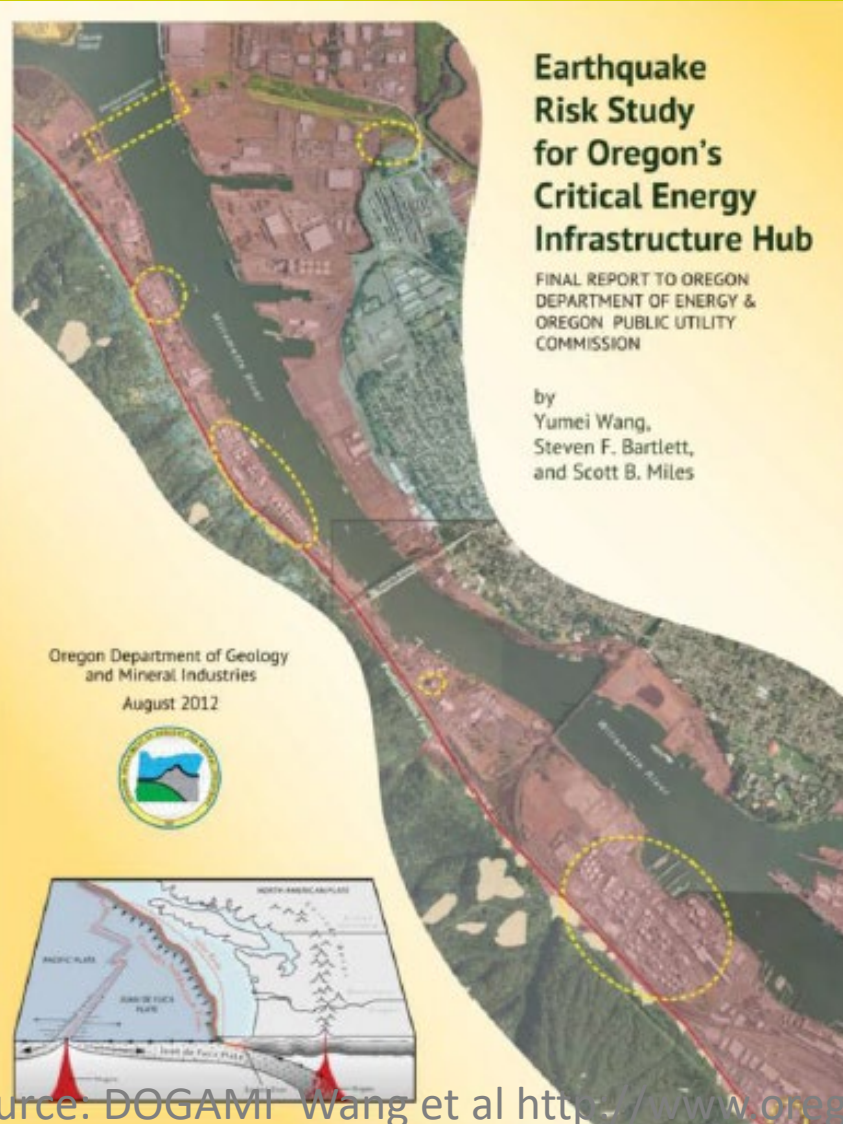
Former OSSPAC chair; Retired DOGAMI engineer



2013

Critical Energy Infrastructure (CEI) Hub

High Risk: earthquake-shaking, liquefaction, fires



Liquefaction Damage is Common by Ports



Source: TCLEE 2011 Tohoku



2010 Haiti M7

Yumei Wang, SLS LLC

CEI Hub: *Liquefaction* Hazards are Extremely High Facilities Built on Loose River Soils (Hydraulic Fill)



CEI Hub Fuel Terminals: Docks & Tanks are Vulnerable

Close- up



Chile (2010)



(Source: DOGAMI)

Source: TCLEE

Senator Michael Dembrow sponsored 2022 SB 1567

DEQ and ODOE to help protect against fuel spills, fires and fuel shortages

1989 Valdez oil spill damage



2011 Japan earthquake—fire damage



Recommend: Bi-Partisan Co-Sponsors and Pass

- **HB 2152** Geographic Diversification of Fuel Supplies: reduce statewide fuel shortages during disasters (ODOE)
- **HB 2151** Seismic Risk Mitigation Fund: expansion of use (DEQ)
- **HB 2949** Risk Bond Study: financial risk of CEI Hub vulnerabilities (DEQ)
- **HB 3450** CEI Hub Long Term Planning: energy-secure transitioning options (ODOE)

HB 2152: Reduces Local Fuel Shortages During Disasters

Fuel Shortage
Disaster

Stage 1: On-Site Fuel
(hospital example)



Stage 2: Local Fuel Supplies
(currently very limited)



Source: DOGAMI

3 weeks

Stage 3: State/ODOE Delivers to Counties

Oregon Fuel Action Plan



Plan, Prepare, Respond, & Recover
From Severe Fuel Shortages



Recommend: Bi-Partisan Co-Sponsors and Pass

- **HB 2152** Geographic Diversification of Fuel Supplies: reduce statewide fuel shortages during disasters (ODOE)
- **HB 2151** Seismic Risk Mitigation Fund: expansion of use (DEQ)
- **HB 2949** Risk Bond Study: financial risk of CEI Hub vulnerabilities (DEQ)
- **HB 3450** CEI Hub Long Term Planning: energy-secure transitioning options (ODOE)

