



Children's Public Private Partnership

Mobilizing local communities, in partnership with the Oregon Department of Human Services (ODHS) to safely reduce the number of children in foster care and create healthy, stable, and inclusive environments for families and communities to thrive together.



Supportive Housing for Families



By 2030, create 60 new affordable permanent supportive housing units for CW-involved families





CP3 & ODHS Partnership



The safety and wellbeing of all children and families requires collective ownership by all Oregonians



2019 CP3 Original Founders Photo

2025 CP3 Cabinet

CP3 Board of Directors

Tim Sinatra
Eric Lindauer
Sue Miller
Najia Hyder
Kenneth Thrasher

ODHS Leadership

Fariborz Pakseresht
Peter Sprengelmeyer
CW Program Leadership

Partnering for family reunification



Our Approach



Priority Focus Areas



CP3 in Marion (2019) & Douglas (2021)

ORRAI

OFFICE OF REPORTING, RESEARCH
ANALYTICS AND IMPLEMENTATION



SUPPORTIVE HOUSING

Affordable, low-barrier,
supportive housing for
families



IN-HOME CHILD SAFETY

Safety Service Providers to
enable children to safely
reunify with parents



TRANSPORTATION

Transportation resources for
families to stay connected

We are all connected
We all benefit when we all thrive

Breaking Silos
Bridging Gaps
Building Trust



Impact



Locally Implemented Programs



**Affordable Permanent Supportive Housing Initiative
(Goal: 60 Units)**



2 Clean & Sober Group Homes



13 In-Home Family Partners

safe at home
FAMILY PARTNERS



435 Rides to Family Time

Impact

Families accessing services introduced by the CP3-ODHS Partnership



155+ Families

Served to Date



61+ Families

Reunification Enabled or
CW Entry Prevented



More Family Time

Fewer Cancellations

Child Welfare Data Snapshot

Children Currently in Foster Care Marion County

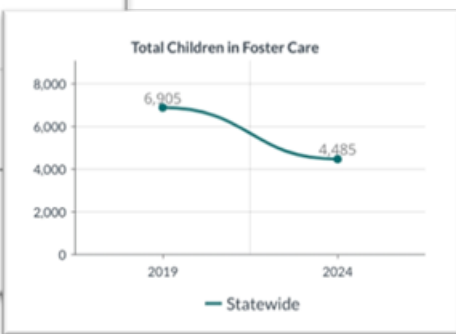


Reduction of children
in foster care in Marion

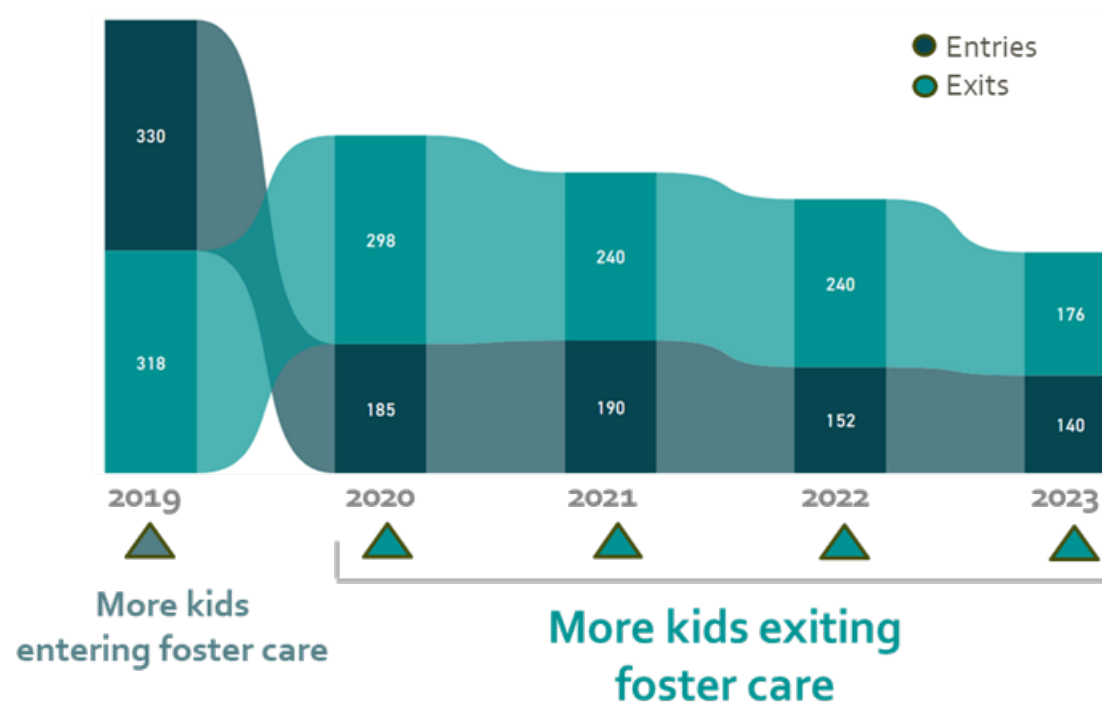


Reduction of children in
foster care Statewide

between 2019 and 2024



Children Entering and Exiting Foster Care Marion County



Opportunity for Growth

CP3 is limited in its ability to support more than a few counties at a time.



A Mother's Story

"The *Safe at Home* program helped me get my life back. At a time when I felt lost and was having trouble meeting my case goals, I was connected with a Family Partner. This person listened to me and supported me throughout my case. Because of her kindness and care and commitment, I grew to trust her and trust our partnership. Our relationship is what helped me enter *Her Place* [Marion Co. inpatient clean and sober living home] where I got my start on what it meant to live a clean and normal life.

After some months, I was able to transition to *Iron Tribe Network* where I was reunified with my daughter. At that moment, I finally felt like I was doing something right and my daughter was there to prove it. My FP continued her relationship with me while providing safety checks as required by the agency. Having a familiar face help make sense of things through the process is something I needed.

I'm appreciative to my Family Partner. I don't know if I would be where I am now without her help. I hope to be an inspiration to other moms who face similar troubles to the ones I had. I hope to become a Morrison Parent Mentor in the future. My life has changed for the better."

-A Mother served by S@H and ITN



safe at home
FAMILY PARTNERS

Partner Feedback

“Working with CP3 has allowed us to align our work with ODHS in a way that we would not have been able to otherwise. ... we have been able to make a real difference for families.”

– Community Partner

“New relationships have been formed, and CP3 helps us broaden the scope of who we consider to be potential partners in our work, specifically as it relates to the private sector. That impacts our entire community in such a positive way.” –

ODHS Partner

CP3 Value & Impact Assessment May-2024

Should ODHS continue to partner and invest in CP3?

**100%
YES**

Partner Feedback

“CP₃ seems to serve as a vehicle to move needs quickly to pilot strategies/solutions and to provide ODHS with data and infrastructure to target areas of family need.”
– *ODHS Partner*

“Having CP₃ take care of some of the heavy lifting of networking, tracking resources, mapping resources, planting seeds for partnership and collaboration, and facilitating thoughtful and meaningful brainstorming meetings has been really helpful.” – *ODHS Partner*

“CP₃ provides connections, collaborations and a partnership that will allow us to grow as a community.” – *Community Partner*

“[CP₃ offers] the ability to bring a wider lens to the issues facing children and families with CW exposure.” – *Community Partner*



Thank You

Questions/Comments?

For more information:

Tim Sinatra, CP3 Board Chair (2025-)

tSinatra@theyonline.org

(503) 581-9622

Sue Miller, CP3 Board Chair (2019-2024)

suemiller500@gmail.com

(503) 931-9009



Children's Public Private Partnership (CP3)

501C3

1000 SW Broadway Suite 2400

Portland, OR 97205

cp3oregon.org