

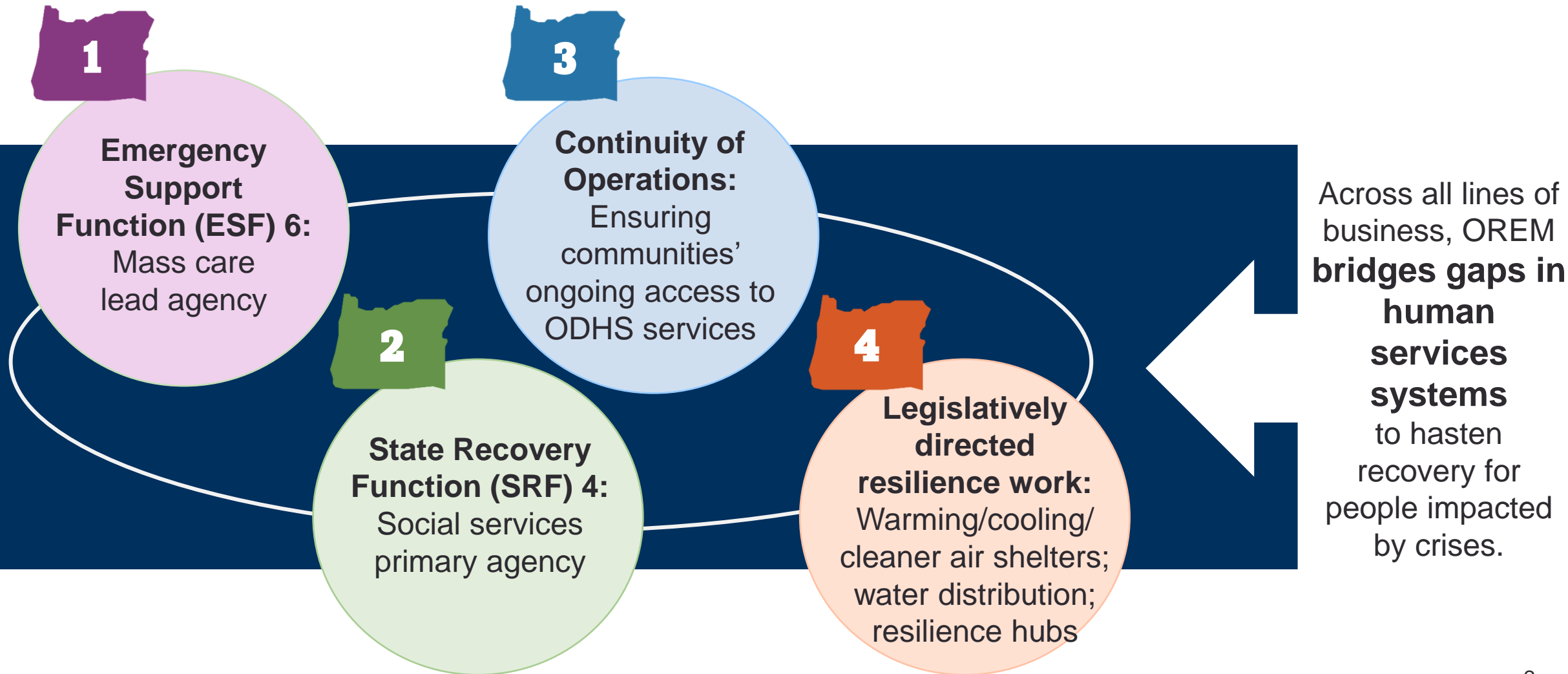
Presentation to the Senate Committee on Housing and
Development

OREM warming, cooling, cleaner air centers

Ed Flick, Director, Oregon Department of Human Services' Office of Resilience
and Emergency Management

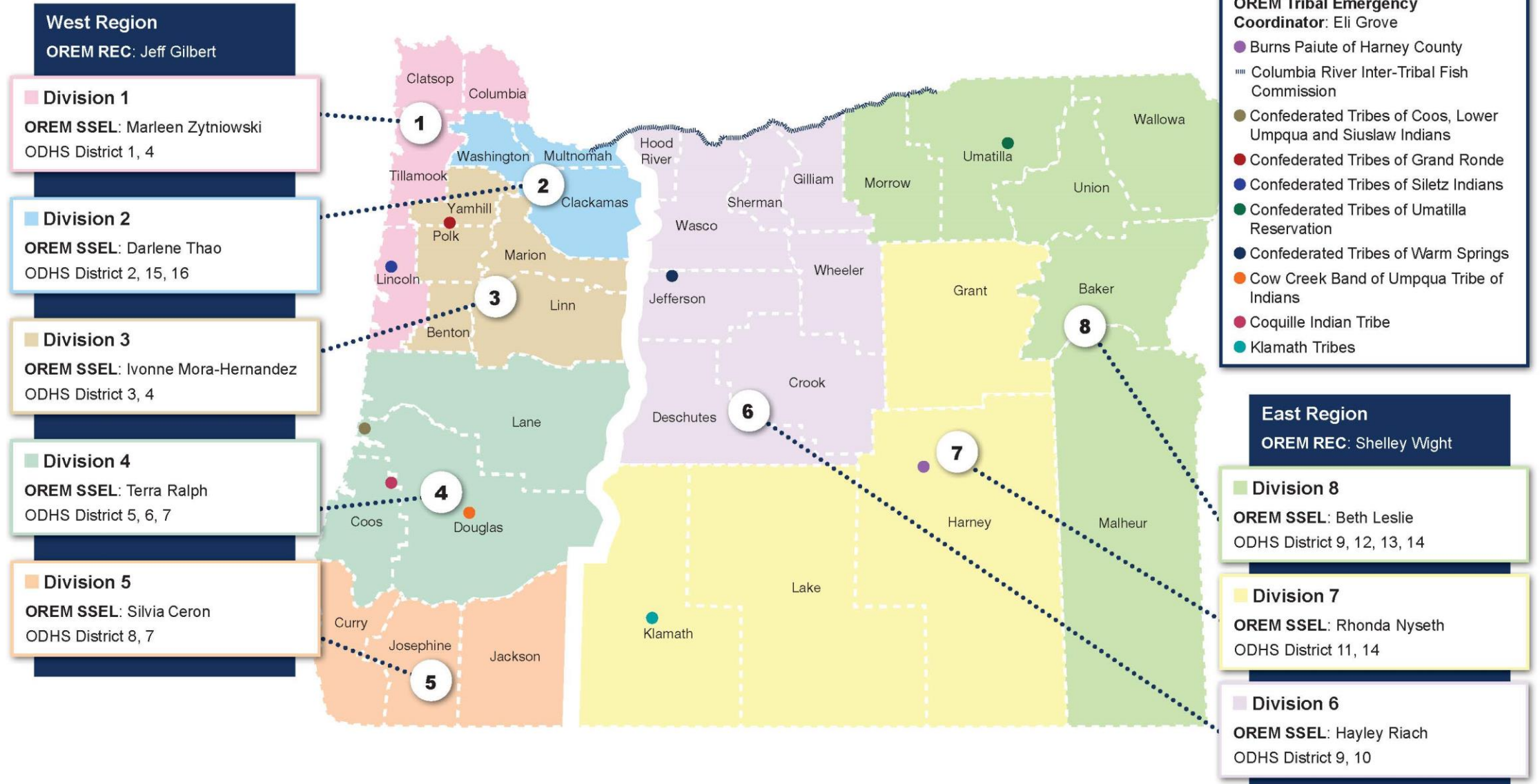
February 17, 2025

OREM's primary lines of business



How We Are Organized | Across the State

Office of Resilience and Emergency Management (OREM) | Regional Emergency Coordinator (REC) | Social Services Emergency Liason (SSEL)



History

2020
wildfires
OREM
begins

SB 762
(2021) \$5M
cleaner
indoor air

2021 heat
dome

SB 1536
(2022) \$2M
heating and
cooling

HB 3409
(2023) \$10M
Resilience
Hubs and
Networks

Authorities

“

The Department of Human Services is the lead state agency for supporting operations for spaces that provide cleaner air, warming or cooling
-ORS 431A.412

”

The OREM approach to all emergencies



Prepare
communities; Keep
people safe in their
homes



If people must
leave, give them
options; coordinate
support



Support people and
social service
organizations
through long term
recovery

Keeping people safe at home

- Understand the needs of communities
- Blue sky planning
- Build relationships / networks
- ODHS continuity of operations
- Pre-stage supplies and equipment
- Training partners
- Information sharing

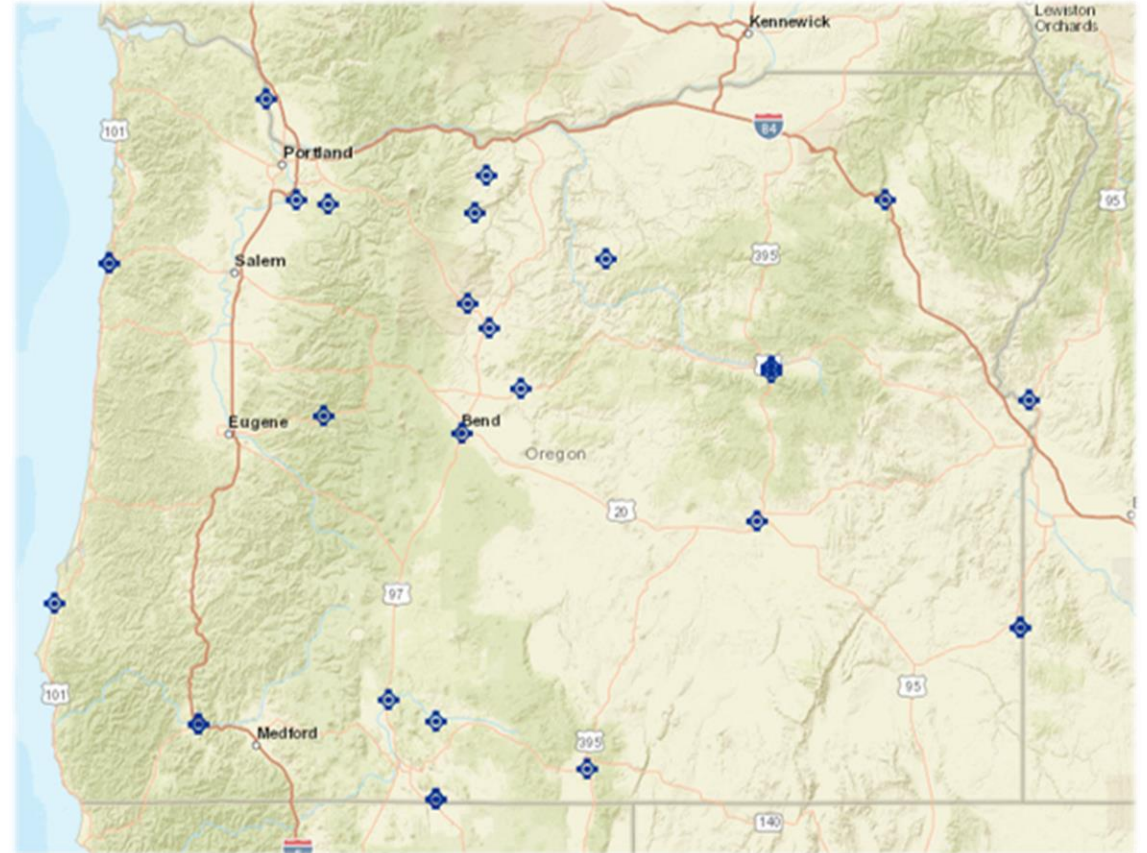


OREM warming/cooling/cleaner indoor air grant

- SB 762 and SB 1536
Warming/Cooling/Cleaner Air Grant
recipients



Klamath County School District Bonanza School Gymnasium, \$150,000 grant



OREM support to shelter preparedness



Climate trailers staged at the Salem warehouse

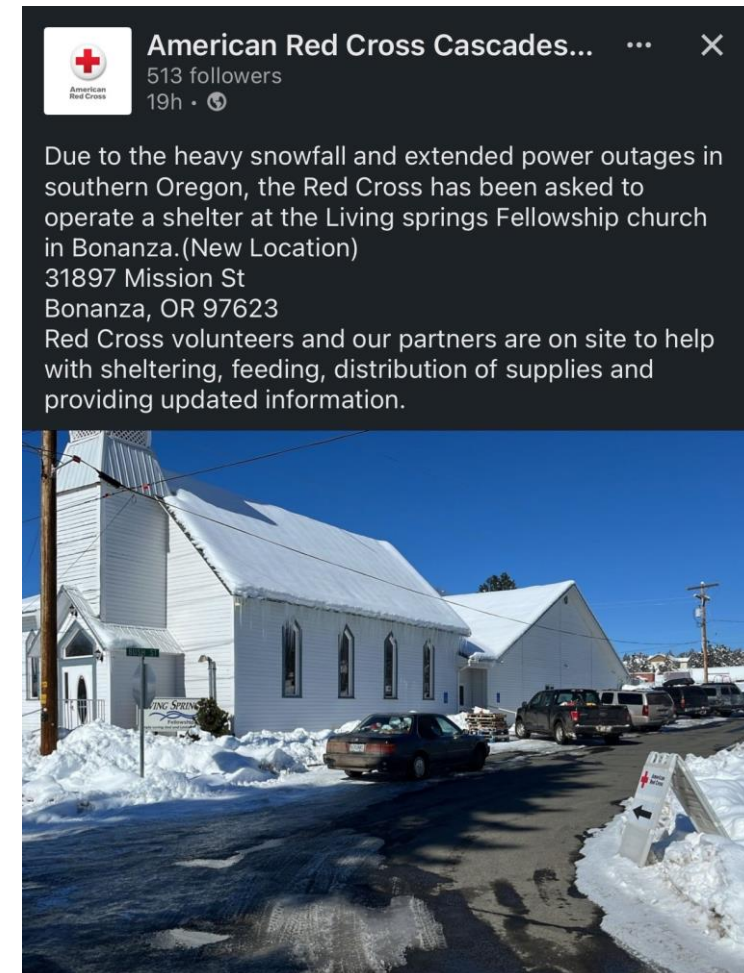
Building options for evacuees

- Support to local warming center operations
- Service integration with 211info
- Active checking on isolated people
- Evacuation assistance via ODHS programs, transportation providers and local emergency operations center
- Medical respite shelter
- Resilience hubs and networks



Small grants to support shelters

- Grants can support
 - Security at shelters
 - Shelter operations (staff, utilities, etc)
 - Shelter site clean up
 - Food/water for shelter guests
 - Hygiene kits, blankets, hand warmers
 - Fuel (firewood, propane)
 - Location-specific supplies based on community requests



211info

- OREM contract ensures 24/7 coverage
- Surge staff available during activation
- Facilitate transportation to shelters via Lyft
- Shelters report their opening to 211info
- 211info monitors situation
- 211info staff active in OREM planning
- Provides data to OREM and counties



Supplies to support shelters



2024



2025

Mass Care Response Team

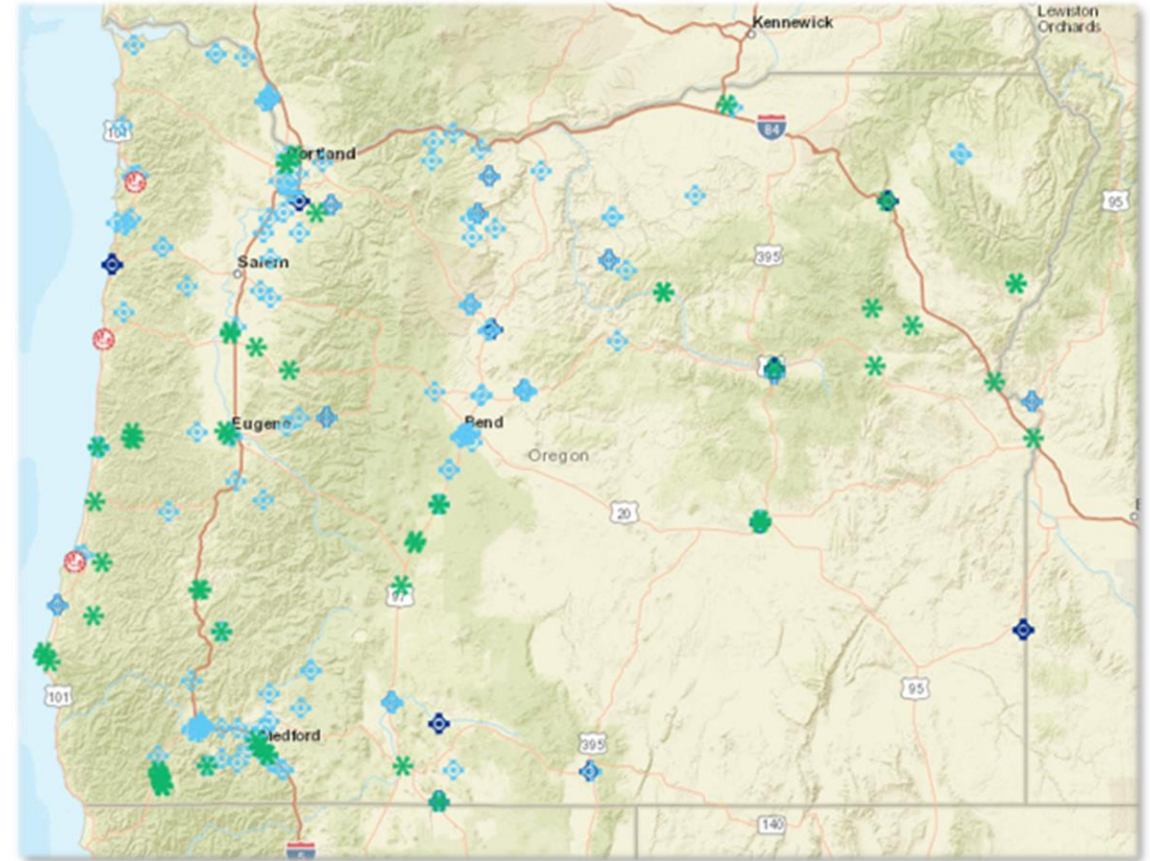


OREM Resilience Hubs and Networks Grant awardees

Resilience Hubs and Networks Grant project locations



Image source: City of Austin (found at RML.org)



OREM Resilience Hubs and Networks Grant applicants

2024 Resilience Hubs and Networks Grant applicants



Pulls previous efforts into one program



700+ applications



\$10 million available, \$173 million total requested



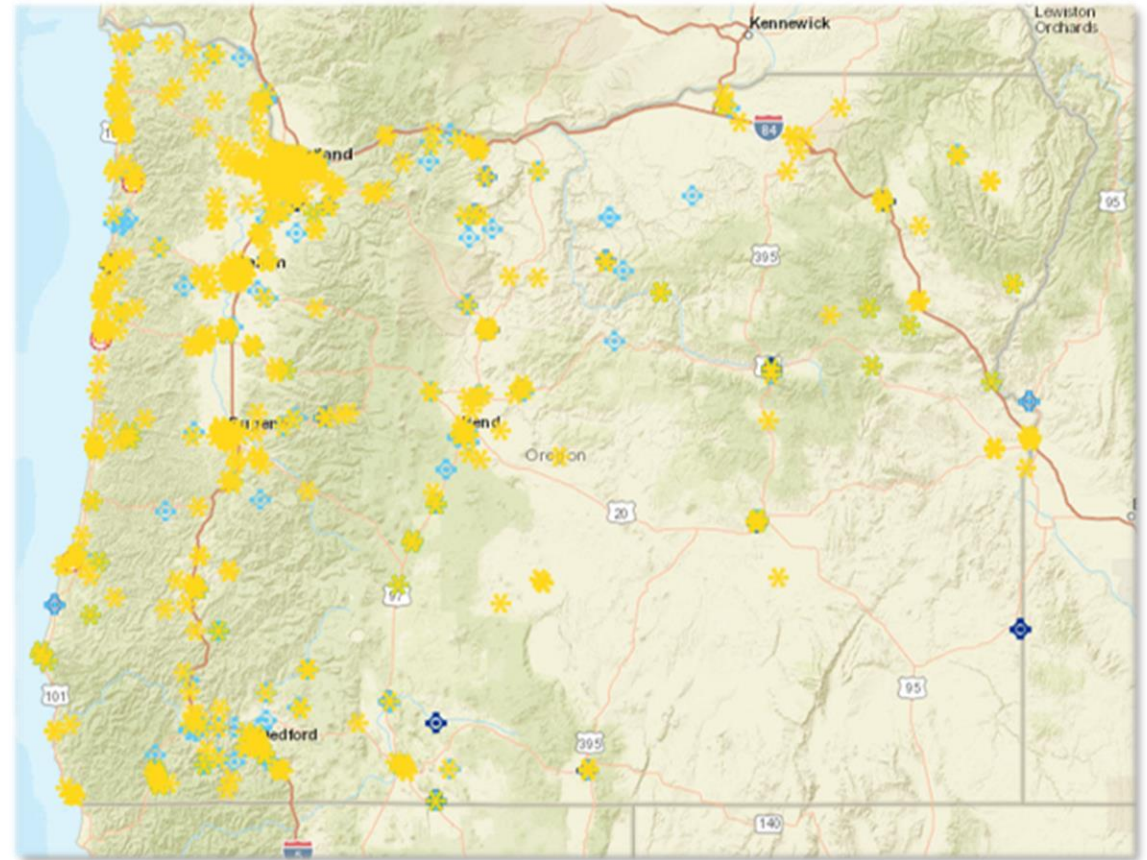
35 counties represented in applications



89 applications identified for award



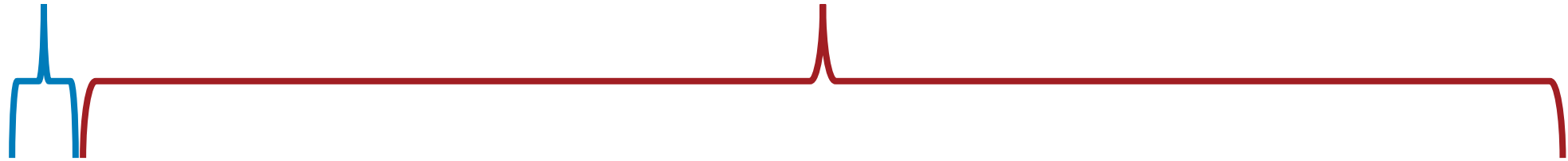
Enable resilience networks



Resilience Hubs and Networks grant

**\$10 million grant
funded 87
organizations**

**\$166 million requested
but unfunded**



700 applications, \$176 million total requested

Looking forward

- OREM available to coordinate shelter support, but not shelter operation
- We know there aren't enough options/resources
- People want local resources
- Build resilience hubs and networks





Questions?
