

County Safety Corridor Pilot Program

House Bill 3213 (2019), ORS 811.483

House Bill 2154 (2025)

Joint Committee on Transportation, Oregon Legislature

February 11, 2025

Brian Worley, County Road Program Director, AOC

Stacy Shetler, County Engineer, Washington County, County Safety Corridor Advisory Group Chair

Lani Radtke, County Engineer, Marion County



Overview

- **County Road Safety Overview**
- **County Safety Corridors**
 - **Lane County Pilot**
 - **Marion County Pilot**
- **Recommendations, HB 2154 (2025)**



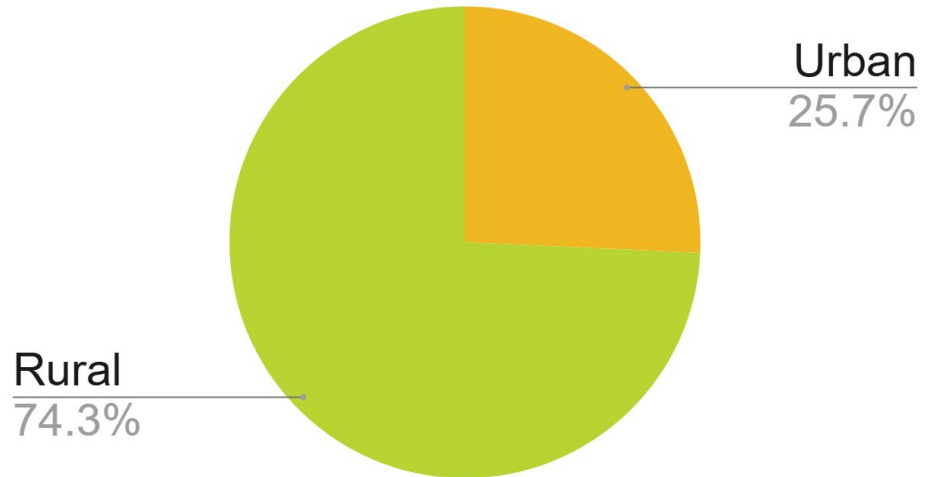
County Road Safety

- 32,700 county road miles (63%)
- 719 fatal and serious injury crashes on county roads (21%) of state totals in 2022
- Risk of dying in a vehicle crash on county roads is significantly higher on rural road than urban

Rural Road Safety Challenges

- Limited cell phone reception
- Longer emergency response time
- Simpler roadway infrastructure
- Risky driver behaviors

Urban and Rural Fatalities on County Roads



County Safety Corridor Pilot Program

ODOT has seen success in reducing fatal and serious injury crashes, but historically, safety corridors including double traffic fines were only allowed on ODOT highways.

HB 3213 (2019) directed ODOT to establish a county safety corridor pilot program and appoint members to a County Safety Corridor Advisory Group.

- Select up to 5 counties to participate in the pilot.
- Establish objective criteria for designating a county safety corridor.
- Establish content requirements for mandated reports to the Legislature (Due 2022/2024).
- Establish requirements for the county safety corridors, including:
 - Regular community engagement
 - Public outreach
 - Heightened enforcement
 - Engineering improvements
 - Infrastructure investments

The pilot program is scheduled to sunset January 2026

County Safety Corridors

- **Goal: Reduce fatal and serious injury crashes**
- A two to 10-mile strip of road with severe safety concerns and high crash rates
- Additional law enforcement attention and **double traffic fines**
- An interim measure in addition to long-term safety improvements
- An education and outreach campaign



Stacy Shetler

County Engineer, Washington County
County Safety Corridor Advisory Group Chair

Advisory Group Work

The Advisory Group staffed by AOC and ODOT has met 14 times since 2020 to establish, monitor, and make recommendations on behalf of two pilot programs, Marion and Lane counties.

Advisory Group Members:

- Two members representing counties
- Two members representing ODOT
- One member representing law enforcement
- One member representing Fire and EMS

Advisory Group Resources:

- A list of eligible roads using ODOT's OASIS Tool
- Example calendars, implementation plans, & bylaws
- Guides and templates for legislative reports



Marion and Lane County Pilot Programs

There were two county pilot programs with different emphases

Lane County - London Rd

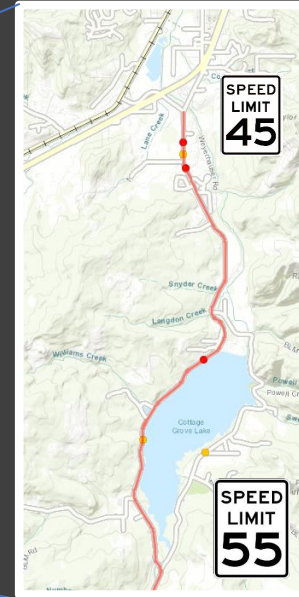
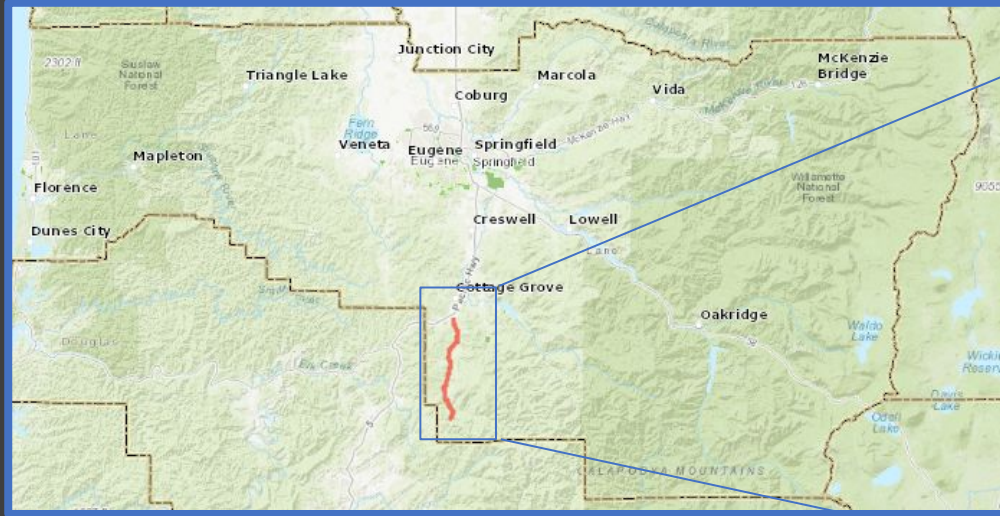
- Education

Marion County - McKay/Ehlen Rds

- Engineering
- Enforcement



London Road Safety Corridor Pilot



Becky Taylor
Senior
Transportation
Planner

- Width: 2 lanes
- Length: 7 miles
- Rural
- Major collector
- 3,700 ADT
- High crash rates
- Call for improvements
- Commissioner support
- 2021 Safety corridor designation
- Decommissioned July 2024

Education

London Road DUII Prevention

99% WILLING TO BE A DESIGNATED DRIVER

99% WOULD CALL A FRIEND FOR A RIDE

92% WOULD CALL A CAB

www.LaneCountyOR.gov/LRSC



LONDON ROAD SAFETY CORRIDOR

BE SAFE

The first 7 miles of London Road (from Latham Road to the southern end of Cottage Grove Reservoir Road) has been designated a Safety Corridor because multiple people have been killed or seriously injured in traffic crashes.

TRAFFIC FINES DOUBLE

This means fines for traffic violations will be doubled – to encourage people to drive at safe speeds and save lives.

\$875

ENHANCED FINE
CLASS A VIOLATION

\$525

ENHANCED FINE
CLASS B VIOLATION

\$325

ENHANCED FINE
CLASS C VIOLATION

\$225

ENHANCED FINE
CLASS D VIOLATION

WATCH YOUR SPEED

The maximum speed is 55 mph, but slower speeds may apply based on roadway conditions. Violating the Basic Rule speed could include driving at a speed greater than is reasonable and prudent.

MAKE A PLAN

Everyone knows someone who wants them to get home safe. If you're planning to drink, don't drive. Use a rideshare service or a designated driver.

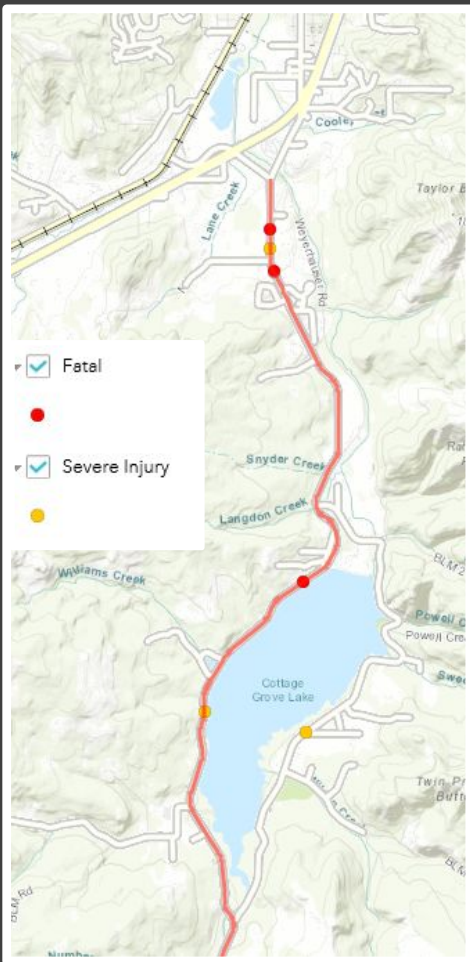
**EFFECTIVE FROM
JULY 4, 2021 – JULY 5, 2023**



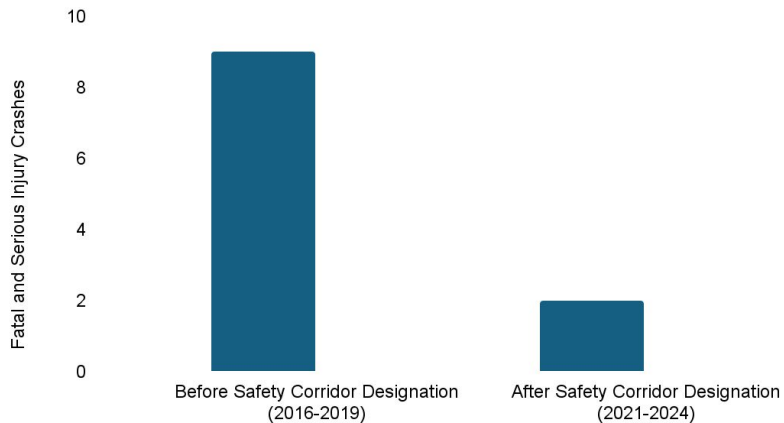
For more information, contact Lane County staff: Becky Taylor, Senior Transportation Planner, becky.taylor@lanecounty.gov, 541-682-6932. Visit the project website at: www.lanecounty.gov/LRSC

Lane County Results

	Before Safety Corridor Designation (7/4/2016-7/5/2019)	After Safety Corridor Designation (7/4/2021-7/5/2024)
#Crashes		
Non-Serious Injury	5	8
Serious Injury	4	2
Fatal	5	0



Fatal + Serious Injury Number of Crashes Comparison Before & After Safety Corridor Designation



McKay / Yergen / Ehlen Road Safety Corridor Pilot



- Width: 2 lanes
- Length: 7 miles
- Rural, with commuter traffic
- Principal arterial, feels like a highway
- ~11,000 ADT
- High crash rates
- Public outcry for improvements
- Commissioner support
- 2021 Safety corridor designation



Lani Radtke
County Engineer

Short Term Engineering - Safety Enhancements



- Centerline rumble strips
- Wider striping, pavement legends
- Signs – additional, larger, reflective
- Vegetation removal
- Reflectors at guardrail
- Intersection street lighting
- Speed feedback signs
- Intersection conflict warning system

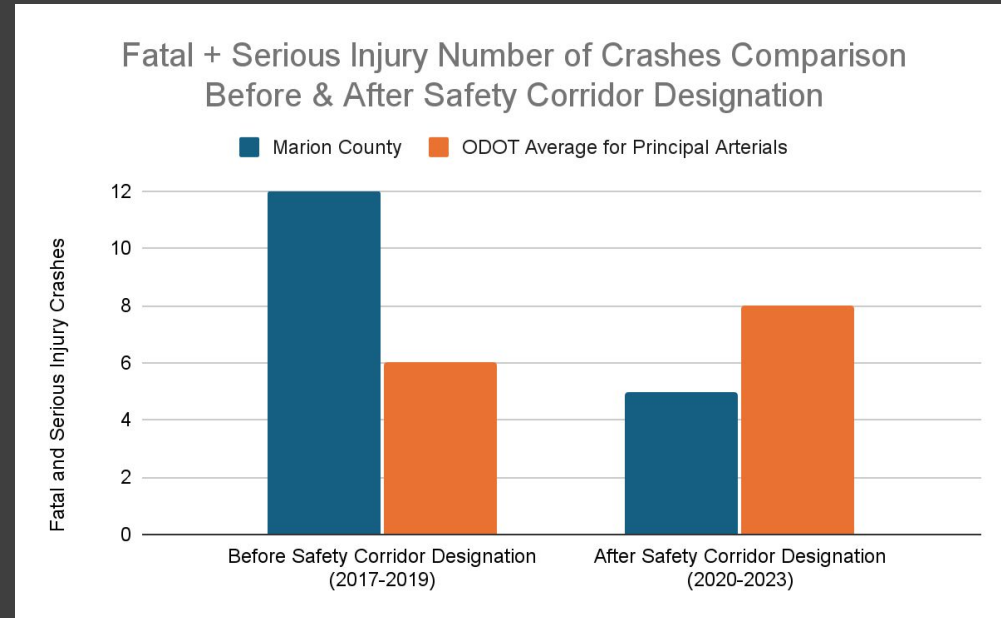
**THANK YOU TO OPERATIONS
& ENGINEERING TEAMS!**

Upcoming Engineering - Safety Enhancements

- Safety Median Widening and Guardrail
Thanks to State Representative Jessica George
- Ehlen Rd / Butteville Rd Roundabout
Thanks to Representative Salinas
- Curve Warning Signs, Shoulder Rumble Strips,
Speed Feedback Signs

Marion County Results

#Crashes	Before Safety Corridor Designation (2017-2019)	After Safety Corridor Designation (2020-2023)
Non-Serious Injury	65	74
Serious Injury	7	2
Fatal	5	3



Pilot Program Results

- **Successes**

- Short-term reduction in serious and fatal crashes
- Community support for safety corridors

- **Challenges**

- County safety corridors lack dedicated resources, need federal and state grant funding
- Doubled traffic fines cannot sustain traffic patrols

Next Steps

Recommendation: Pass HB 2154, -1 Amendments

Establish a Permanent County Safety Corridor Program

- Allow counties to enact ordinances authorizing safety corridors
 - The ordinance must specify criteria for designating a corridor, including a demonstrated safety performance issue
- Allow doubled traffic fines, with the following requirements:
 - Maximum of two safety corridors per county at one time
 - Annual report to County Board of Commissioners
- Counties are encouraged to
 - Include regular community engagement, heightened enforcement, engineering improvements, infrastructure investments, and public outreach



Questions

County Staff:

Stacy Shetler, P.E.

Chair County Safety Corridor Advisory Group

County Engineer, Washington County

stacy_shetler@washingtoncountyor.gov

Lani Radtke, P.E.

County Engineer, Marion County

lrادتke@co.marion.or.us

Becky Taylor

Senior Transportation Planner, Lane County

becky.taylor@lanecountyor.gov

AOC Staff:

Brian Worley

Association of Oregon Counties

County Road Program Director

bworley@oregoncounties.org

Jordan Cole

Association of Oregon Counties

County Road Program Policy

Analyst

jcole@oregoncounties.org

For more information:

[County Safety Corridor Report 2024](#)

oregoncounties.org/road-resources