



Oregon State Police

**House Emergency Management, General Government, and Veterans
Committee**

Casey Coddling, Superintendent
Josh Brooks, Deputy Superintendent



Mission & Emergency Response Role

The Oregon State Police will be a leader in delivering high-quality services that support and enhance public safety in the 21st Century.

Mission

- To serve all people with a priority of safeguarding life, property, and natural resources by building upon a diverse, professional, and trustworthy workforce.

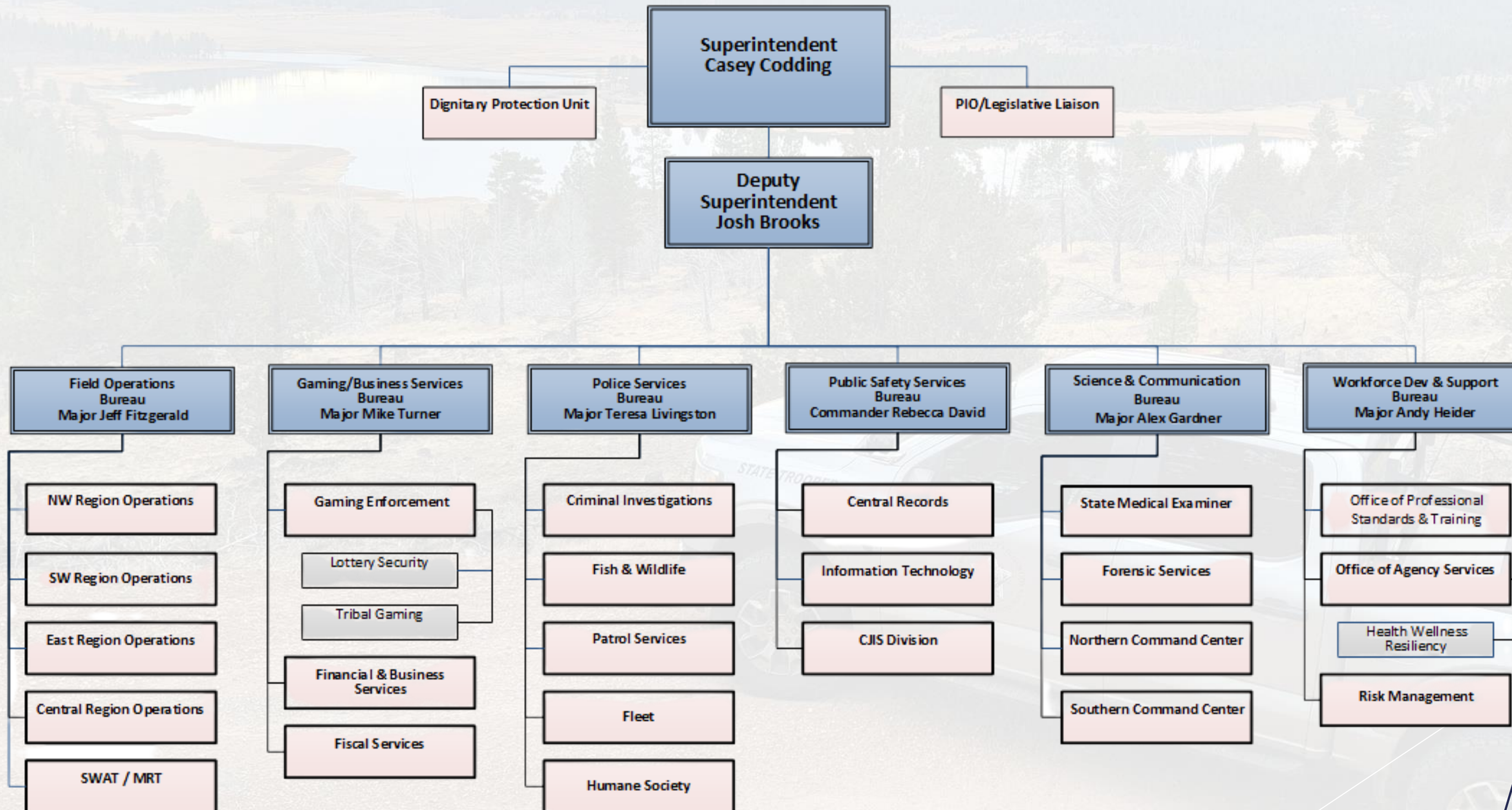
Emergency Response Role

- Oregon Emergency Management (OEM) Emergency Coordination Center (ECC) Emergency Support Function 13 (ESF 13) Law Enforcement representative
 - Coordinate and communicate with law enforcement agency partners during critical incidents
 - All sworn members NIMS/ICS trained
- State Interoperability Executive Council
- Oregon Homeland Security Advisory System
- Criminal Justice Information Standards Advisory Board
- Terrorism Intelligence Threat Assessment Network Fusion Center
- Portland National Security Executive Board (JTTF)





Organization





Staff Deployment

Agency Personnel

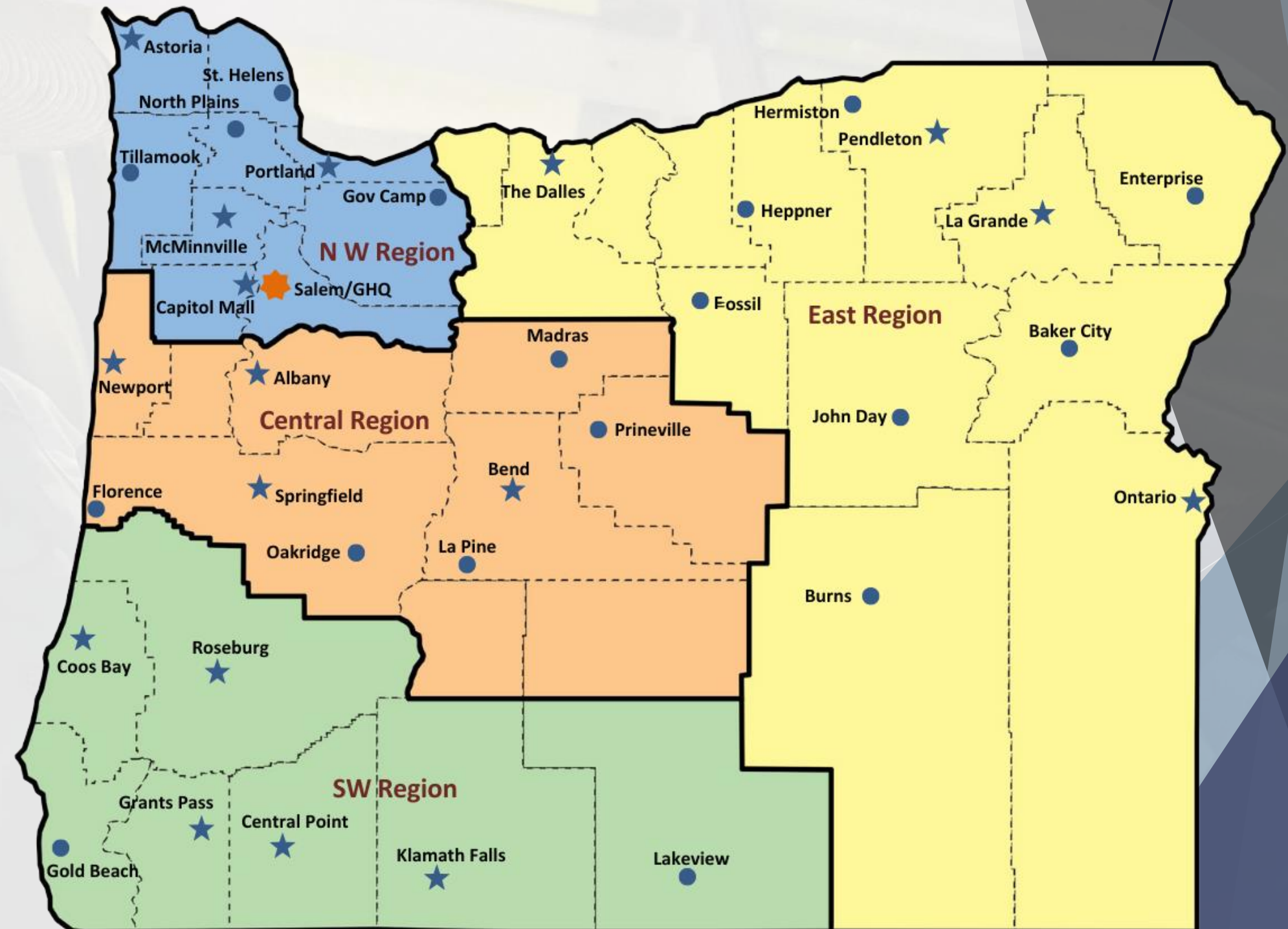
- Sworn staff: 766
 - Patrol: 478
 - Fish & Wildlife: 128
 - Criminal: 110
 - Specialty assignments: 50
- Professional staff: 627

Patrol Offices

- 35 Patrol Offices
 - 17 Area Commands
 - 18 supporting Worksites

Specialty Units

- Personnel/equipment statewide
 - SWAT
 - Collision Reconstruction
 - K-9 team
 - Mobile Response Team
 - State Overdose Response Team
 - Counter Terrorism Section
 - Drug Enforcement Section





Command Centers (Dispatch)

Two regional Command Centers (Dispatch)

- Northern Command Center: Salem
- Southern Command Center: Central Point

Fully redundant operations

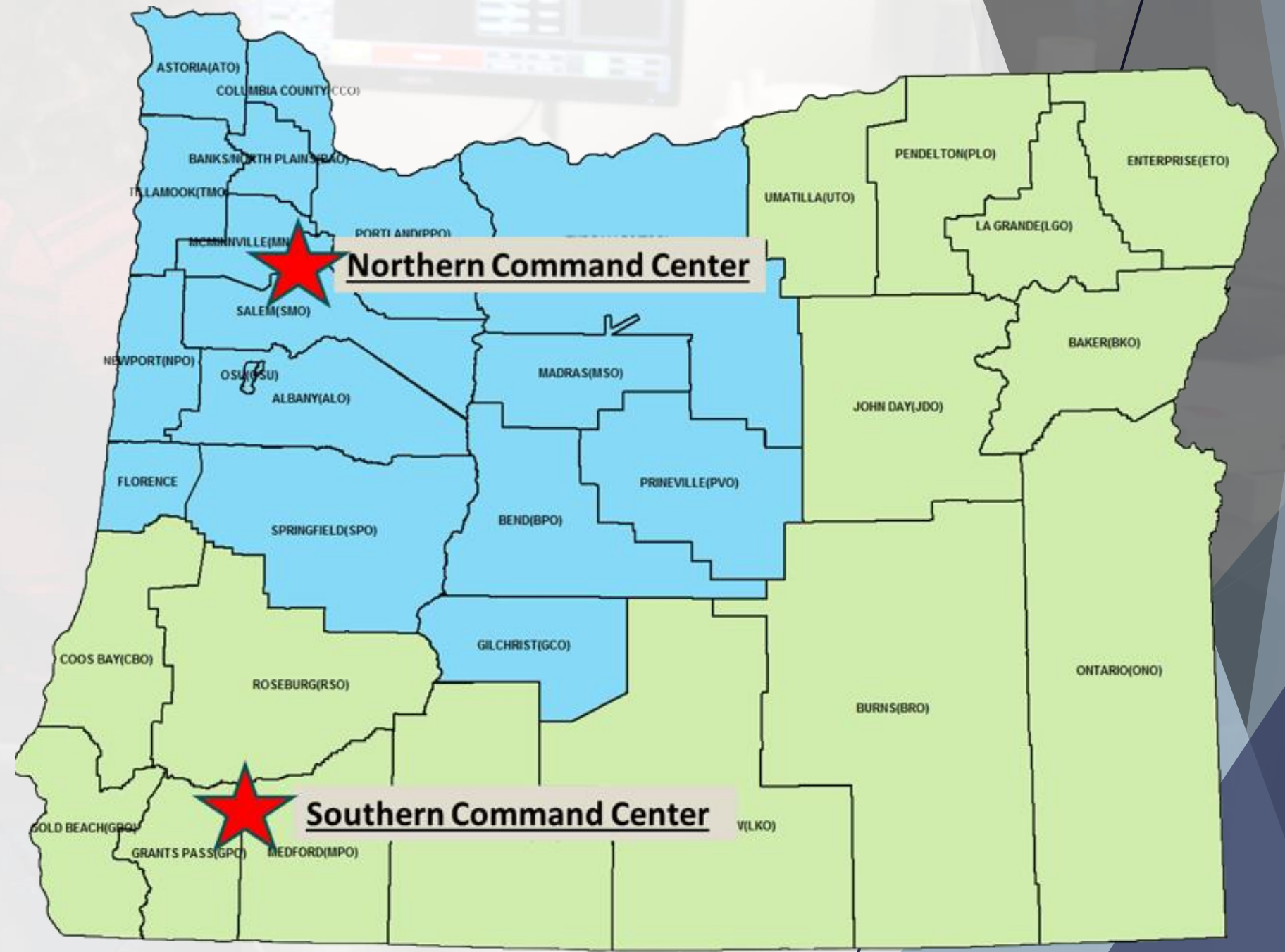
- Regularly exercise transferring operations between dispatch centers

Secondary Public Safety Answering Points (PSAP)

- Do not directly receive 911 calls
- Oregon PSAPs (911 centers): 41
- Operational 24/7/365

Statewide Communication

- City/county law enforcement access to OSP radios in each patrol office area





Emergency Resources

Agency Communications Center (AOC)

- Ability to monitor/manage critical incident/regional event responses statewide from OSP General Headquarters
- Two fully functional dispatch consoles and Computer Aided Dispatch (CAD) stations
- Two OSP radio base stations
 - Direct communication and incident command from General Headquarters
- Auxiliary radio equipment (similar to HAM Radio)
 - Direct communication with OEM and county emergency management offices
- Starlink internet
- Generator backup
 - CAD, network, and communication redundancy

Satellite communications for command staff

- Ability to communicate with regional supervisors if other communication channels are unavailable

Major Incident Command Group

- Command staff Microsoft Teams channel to quickly disseminate emergency information statewide



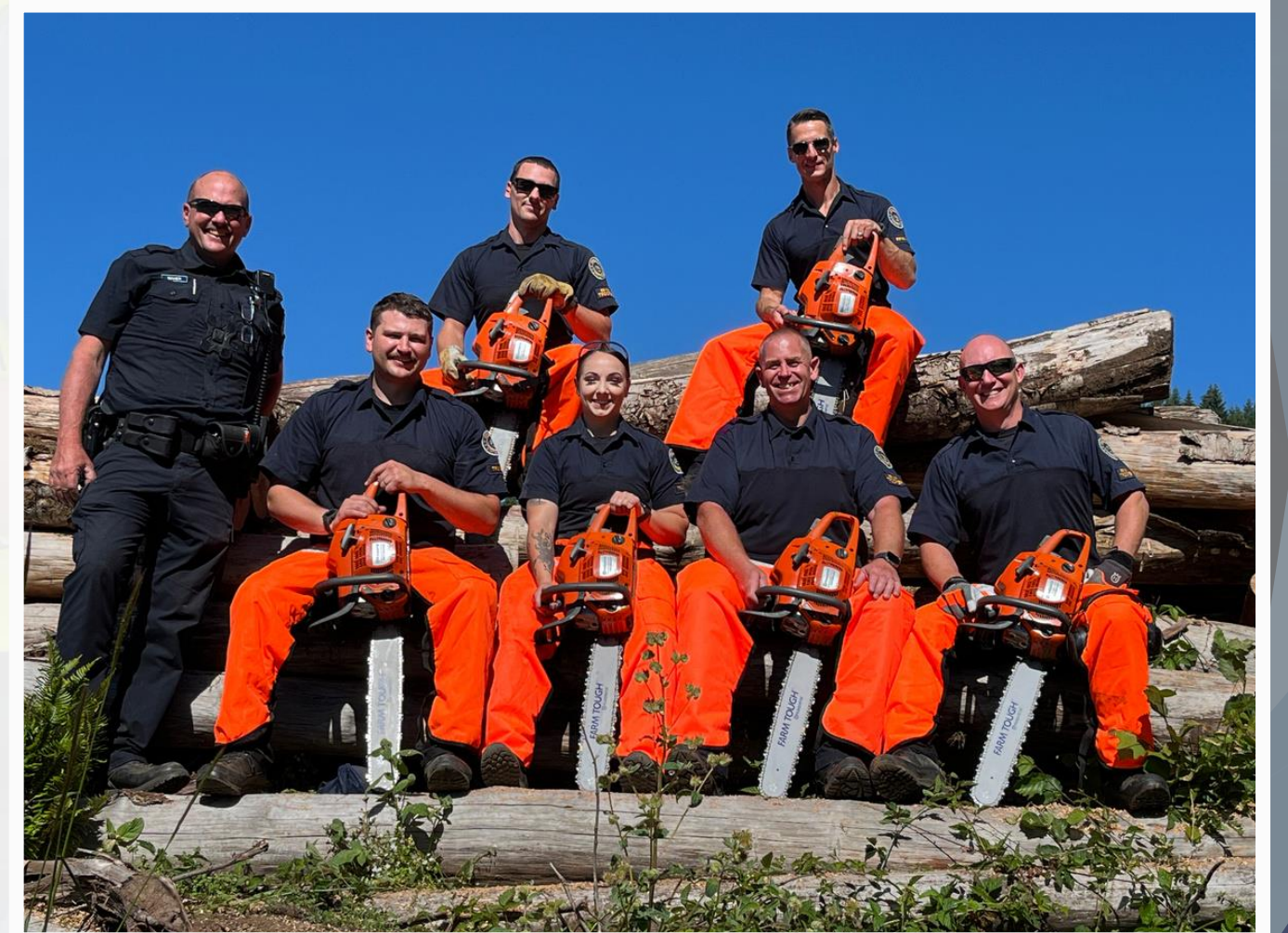
Emergency Resources

Statewide emergency response every day

- Scalable response
 - Local area command, regional, and statewide resources
- Watercraft, aircraft, and off-road vehicles
- Ongoing collaboration with local agencies (cities and counties)
- Support of local emergency orders
 - Regularly deployed throughout state to enhance local operations
- Basic road clearing as needed

OSP resources/local agency support

- Statewide law enforcement functions
 - Personnel
 - Patrol, Fish & Wildlife, and Criminal Division troopers deployed throughout state
 - Sworn staff 3-day “Go Bag”
- Notification/evacuation assistance
- Criminal investigations
- Mass casualty incidents
 - Medical Examiners (mobile morgue, refrigerated trailers)





Example: Tsunami Warning

December 5, 2024, Tsunami Warning

10:54 AM	Tsunami Warning received: 7.0 magnitude earthquake off California coastline; 45 miles SW of Eureka, CA
10:55 AM	Area Commander notified
10:56 AM	Dispatch broadcast to Gold Beach and Coos Bay patrol offices <ul style="list-style-type: none">• All available patrol, Fish & Wildlife, and detectives deployed
11:02 AM	GHQ AOC activated and all command alert issued
11:16	Major Incident Command Group activated and sharing real time information
11:21 AM	OSP Area Commander reports to local Incident Command Center <ul style="list-style-type: none">• Pre-positioning of OSP watercraft, aircraft, off-road vehicles, and additional personnel<ul style="list-style-type: none">○ Grants Pass, Medford, Roseburg patrol, Fish & Wildlife, and criminal division troopers on standby○ Central Region Fish & Wildlife on standby• Responders instructed to seek higher ground as impact times near
11:54 AM	Tsunami warning lifted
11:59 AM	Gold Beach and Coos Bay patrol offices resume normal operations



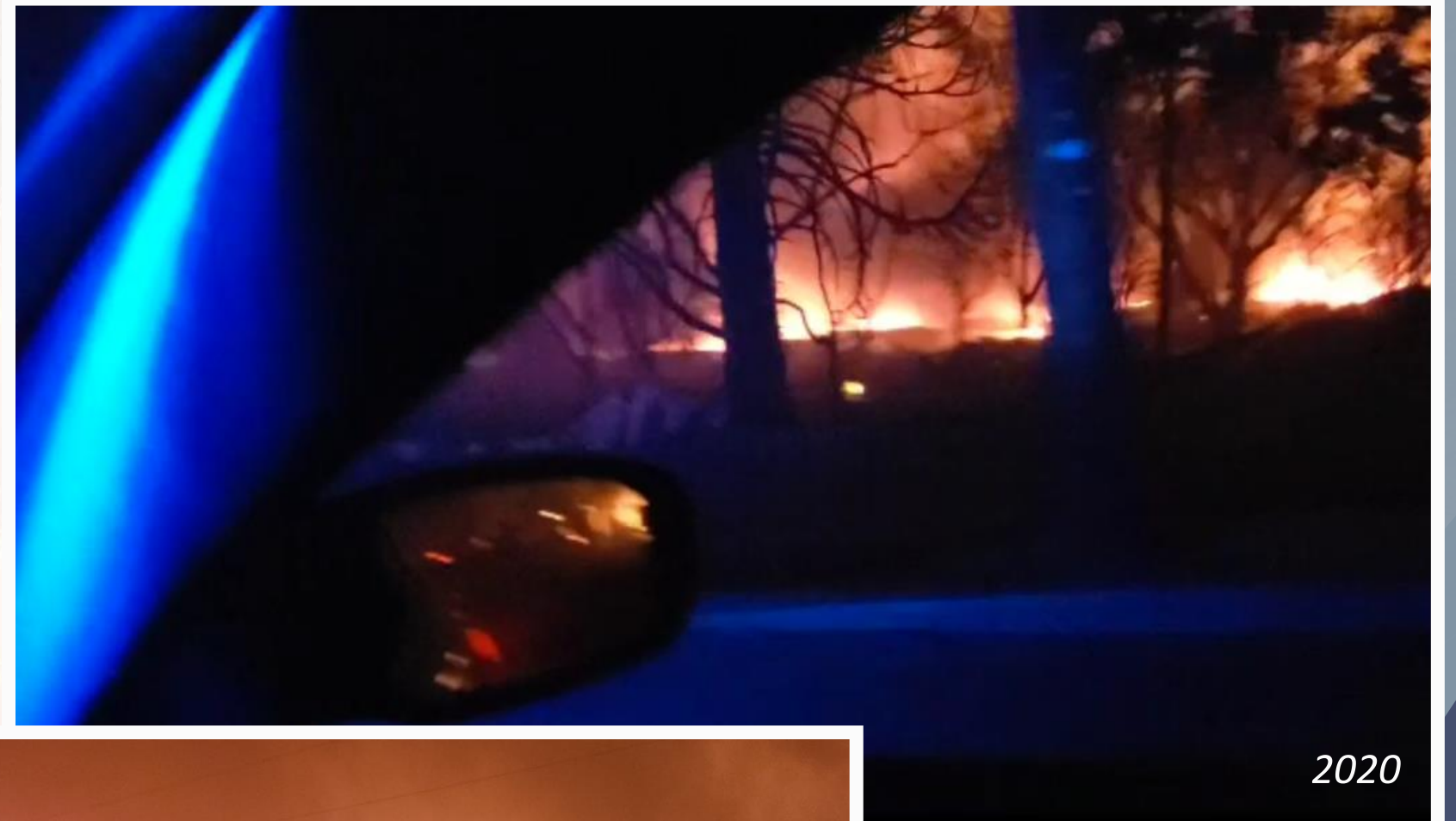
Example: Wildfire Response

Annual Wildfire Response

- Statewide allocation of staff and resources in support of local agencies
 - Collaboration with local, state, and federal agency partners
 - Assist with enforcement of local emergency road closures
 - Evacuation response from local patrol offices as needed
 - Supplementing local resources
 - Basic road clearing
 - Fish & Wildlife troopers with chainsaws and winches

Post Fire Response

- Search for victims
- Criminal investigations
 - Crimes that occurred during a fire
 - Follow-up investigations
 - Arson investigations as needed





Emergency Plans

OSP Emergency Plans

- **Emergency Operations Plan (EOP)**
 - All-hazard plan
 - Outlines OSP's roles and responsibilities in an emergency response
 - Guide for responding to major emergencies and disasters
- **Continuity of Operations Plan (COOP)**
 - Works in conjunction with agency EOP to re-establish critical functions following an interruption of services
 - Outlines essential functions, succession order and delegation of authority, alternate work facilities and equipment, and technology needs





Oregon State Police

Closing Remarks/Questions