



OREGON
HEALTH
AUTHORITY

February 4, 2025

Secure Residential Treatment Facilities Overview

Presented to:

Senate Committee on Early Childhood and Behavioral Health

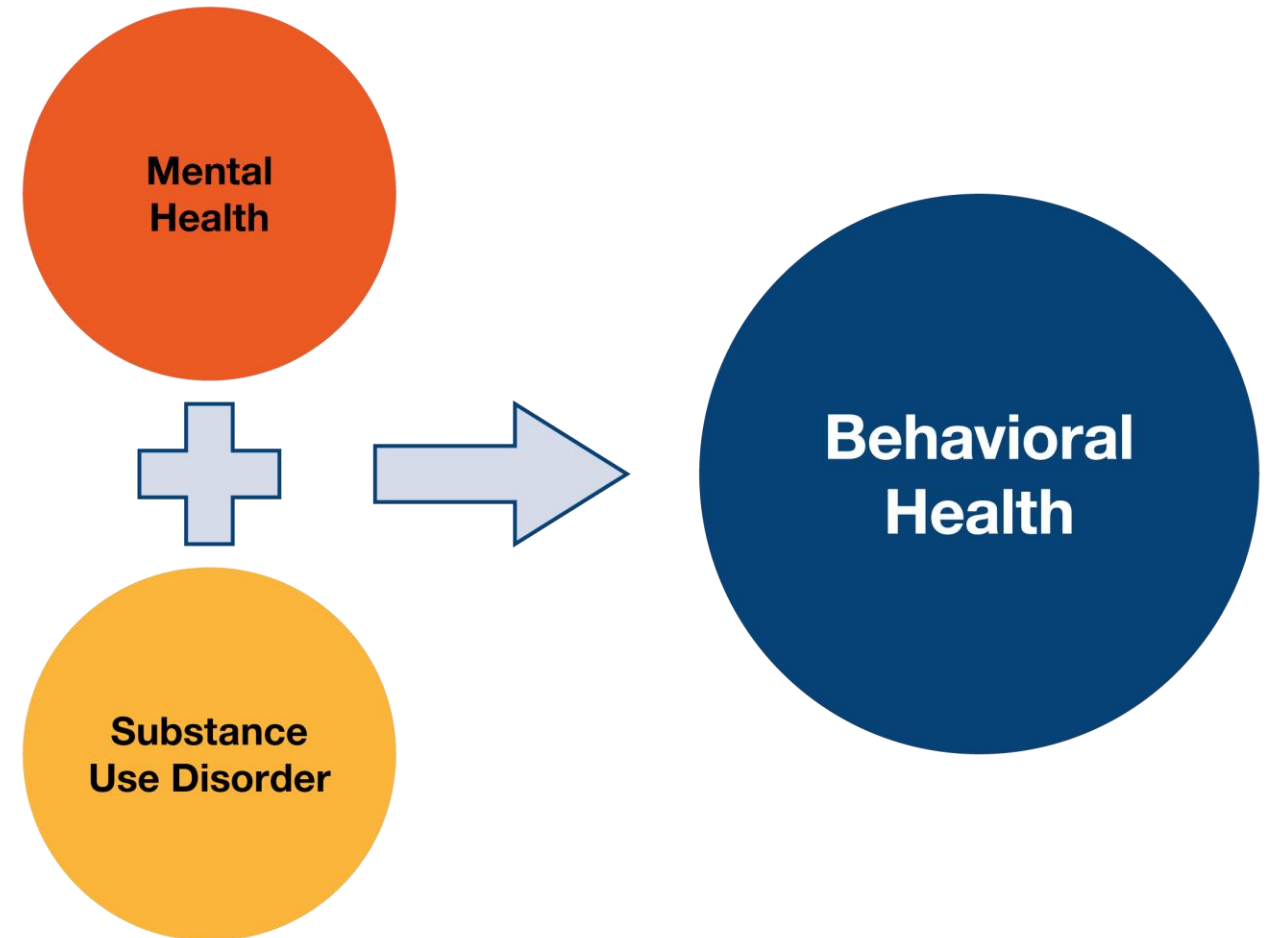
Chelsea Holcomb, Child and Family Behavioral Health Director
Samantha Byers, Adult Behavioral Health Director

What is Behavioral Health?

Behavioral health refers to a person's emotional and mental well-being across the lifespan.

It includes the **prevention, treatment and ongoing support** of:

- Mental health conditions such as schizophrenia, depression, and anxiety
- Substance use disorders
- Problem gambling and other addictive behaviors



Behavioral Health Treatments and Services

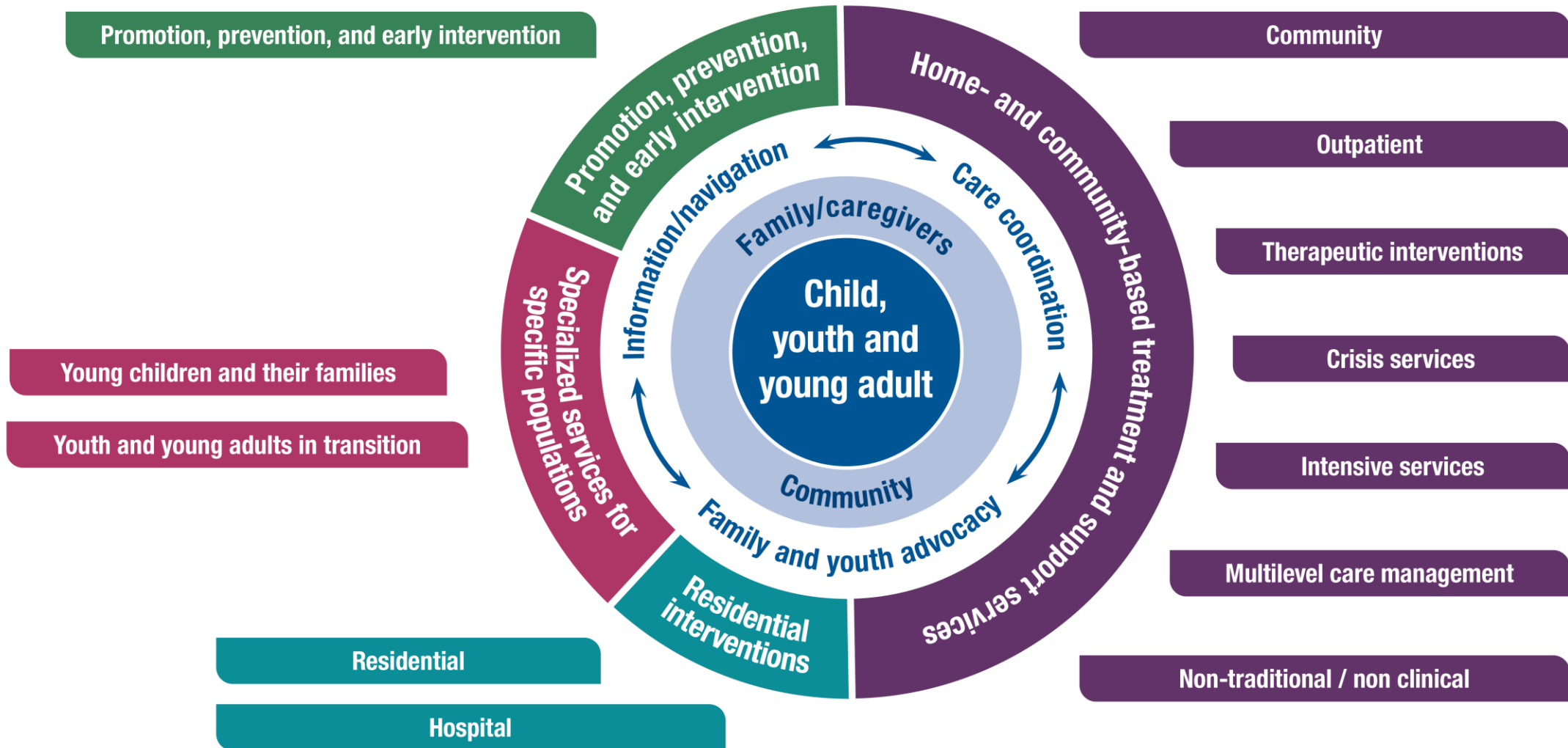
Behavioral health is a care approach that prevents and treats:

- Mental illness and mental health challenges
- Substance use disorders and challenges
- Problem Gambling and other addiction

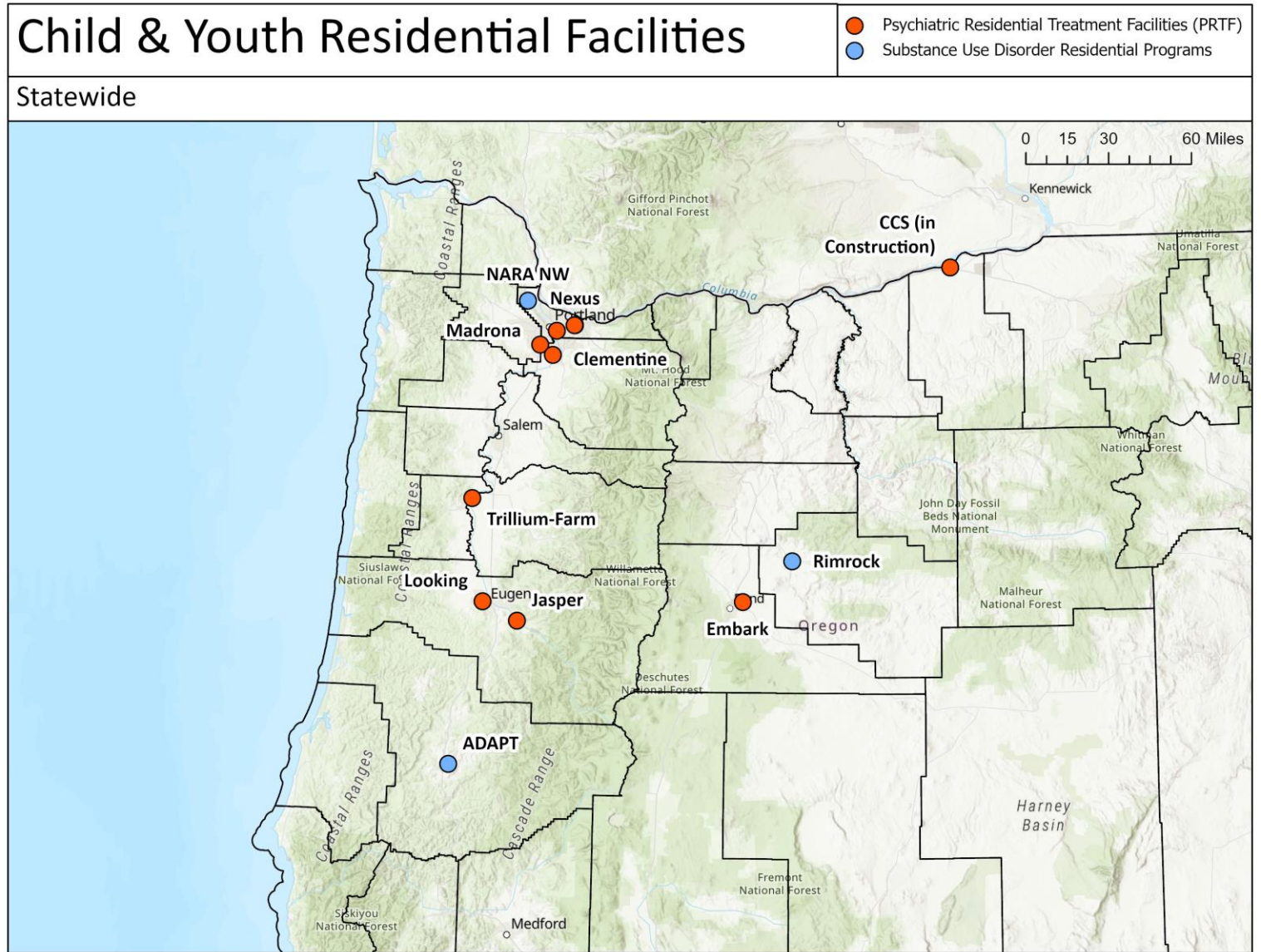


Behavioral health needs can be experienced **across the life span** of a person, from birth to the end of life.

Oregon Children's Behavioral Health Continuum of Care



Current Youth Residential Providers



Psychiatric Residential Treatment Services

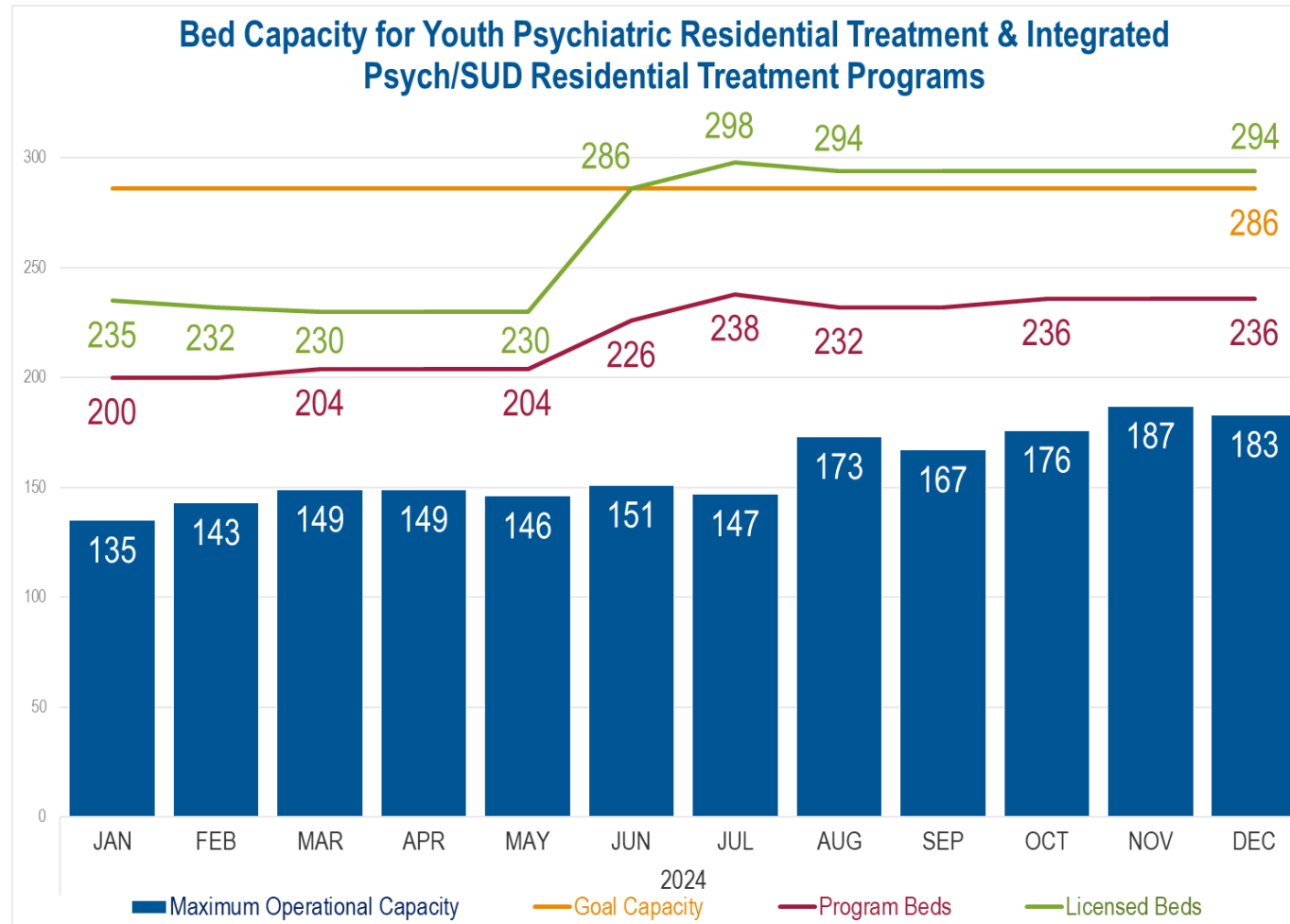
Residential programs treat children and adolescents who:

- Require a residential environment for assessment and treatment.
- Youth receive care in 24-hour facilities where they live while receiving treatment.

Active psychiatric treatment includes:

- Psychiatric services, medication management, group therapy, skills training, individual and family therapy.
- Programs vary of children they serve by age, population, treatment focus and intensity
- Referrals come from Coordinated Care Organization (CCO), Open Card, Commercial Insurance and some accept self pay.

Psychiatric Residential Treatment Capacity

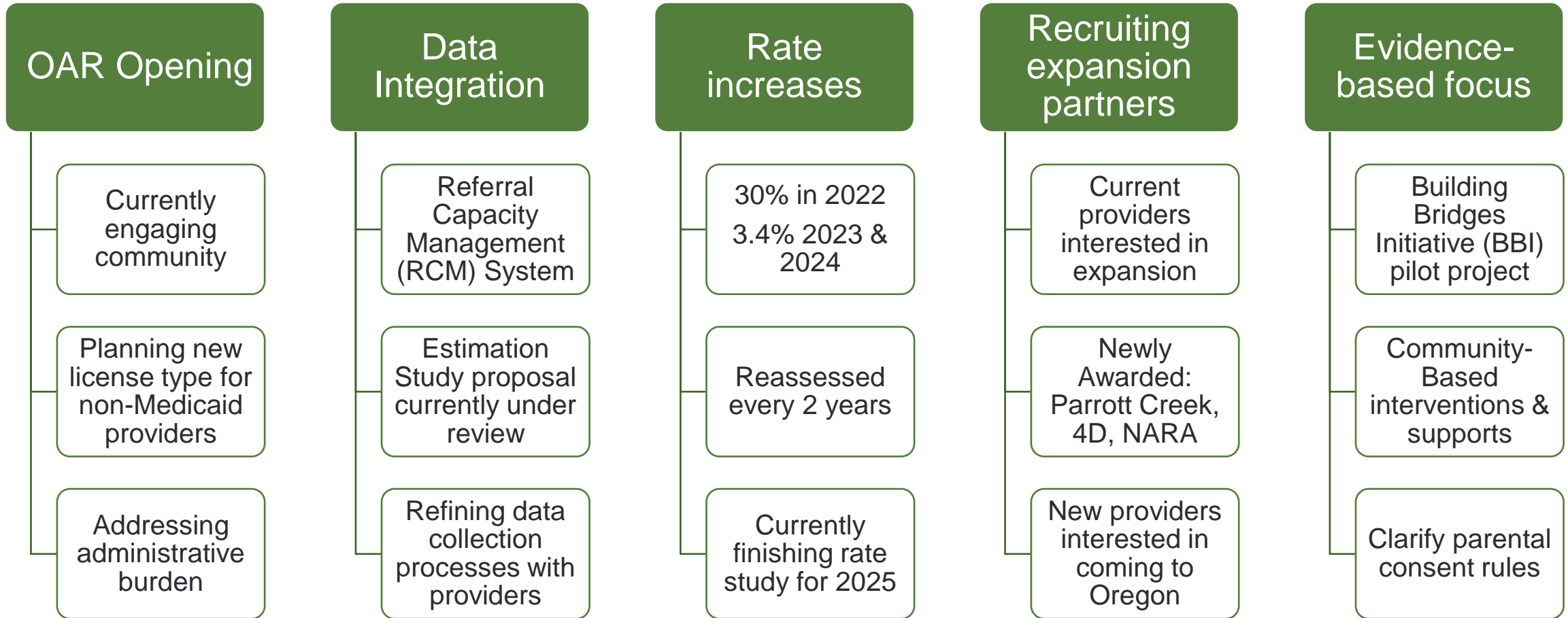


SUD Residential Treatment Capacity

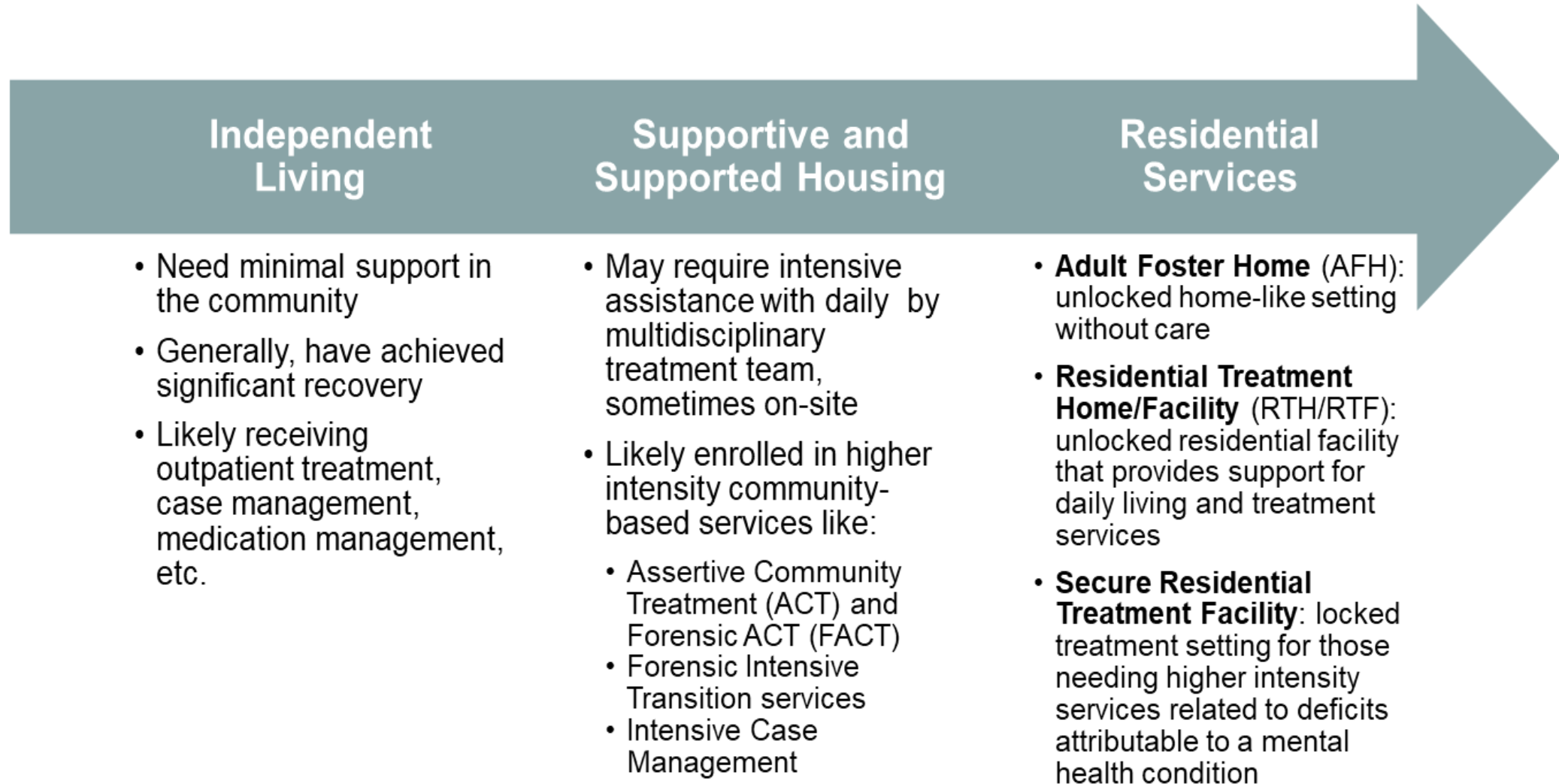
Bed Capacity for Youth Substance Use Disorder (SUD) & Integrated Psych/SUD Programs



Recent Successes & Current Efforts



Adult Residential Setting & Housing Continuum



Secured Residential Treatment Facilities (SRTFs)

- Divided into Class 1 and Class 2 facilities:
 - Class 1 has 24/7 Registered Nurse staffing for medical assessments and can use physician-ordered seclusion/restraint
 - Class 2 can initiate physical restraints but must refer individuals to the Emergency Department for medical assessments. Differentiated by resident stability and compliance with medication
- A person is placed in a SRTF through Hospital, psychologist/psychiatrist and Comagine (IQA) evaluations/recommendations
 - Courts may order this level of care

Secured Residential Treatment Facilities (SRTFs)

- There is a shortage of SRTFs and all levels of residential care
- These are treatment facilities designed to facilitate care that allows a person to safely transition to lower levels of care and eventually back into community
 - *Tension point: SRTFs placements are often related to public safety concerns, rather than medical necessity.*
- SRTFs are predominantly funded through Medicaid payments
- 6 SRTFs have direct contracts with OHA to facilitate the placement of those that do not meet medical necessity

Secured Residential Treatment Facilities (SRTFs)

- Current Capacity: 546
- In Development: 58

Remaining to 5-year Goal: 182

Total: 786



OREGON
HEALTH
AUTHORITY

Questions?

Thank you!

Chelsea Holcomb – Child and Family Behavioral Health Director
Samantha Byers – Adult Behavioral Health Director
Behavioral Health Division



Contact:

Robert Lee

Senior Policy Advisor

Robert.Lee@oha.oregon.gov