



Oregon Department of  
**Early Learning  
and Care**

---

## **Early Learning & Child Care in Oregon**

Alyssa Chatterjee, Early Learning System Director





# The Impact of Early Learning & Child Care



Investments in early childhood have economic and early childhood development implications.



**Return on Investment**  
Every dollar invested in early childhood education can yield a return of between **\$4 and \$9** in economic benefits.



**Family Economic Stability**  
When parents are assured that their children are receiving quality care and education, they are better able to pursue full-time employment, which enhances household income and economic stability.



**Economic Impact in Community**  
Investment in early childhood programs creates jobs in the sector, and the economic stability afforded to families generates economic activity in local communities.



**Business Support**  
While many child care programs are small businesses themselves, access to child care reduce absenteeism and increases employee productivity.



**Literacy & Equal Access to Education**  
Early learning programs help close the achievement gap between children from affluent families and those from lower-income backgrounds so that all children can thrive.





The Department of Early Learning and Care (DELIC) was established on July 1, 2023.

The agency focuses on increasing supports during a child's earliest years, primarily from prenatal to kindergarten.

DELIC administers the state's preschool and early learning and home visiting programs and supports infant-toddler care, funds professional learning services, and provides child care assistance to qualifying families. Additionally, DELIC provides child care licensing and health and safety monitoring through the Child Care Licensing Division.



# Mission

The Department of Early Learning and Care fosters coordinated, culturally appropriate, and family-centered services that recognize and respect the strengths and needs of all children, families, and early learning and care professionals.

# Vision

All children, families, early care and education professionals, and communities are supported and empowered to thrive.

# Values

## Equity

We are committed to dismantling the systems of oppression that harm and create disparities for communities who are historically and institutionally excluded. We are adopting anti-racist principles, expanding access to services, and ensuring community representation and shared power in agency efforts. We are fostering a culturally responsive environment in which all individuals can experience a sense of belonging as they access programs, services, and resources.

## Respect

We believe that family is a child's first teacher. We are committed to nurturing family partnerships built on mutual respect. We recognize and value the knowledge and experiences of families, early care and education professionals, and community partners.

## Trust

We value the public's trust through honesty, transparency, and keeping our commitments.

## Relationships

We acknowledge the importance of nurturing relationships in the field and with community. We listen to, support, collaborate with, and celebrate the professionals, families, and children in our communities.

## Safety

We put safety and well-being first for our children, families, and early learning and care professionals.

## Continuous Improvement

We set goals, seek input from community, and use data to improve quality of service and programs, increase quality and efficiency, and drive innovation.

## Integrity

We are accountable for our actions, decisions, and our work to reliably achieve high-quality outcomes.



Oregon Department of  
Early Learning and Care



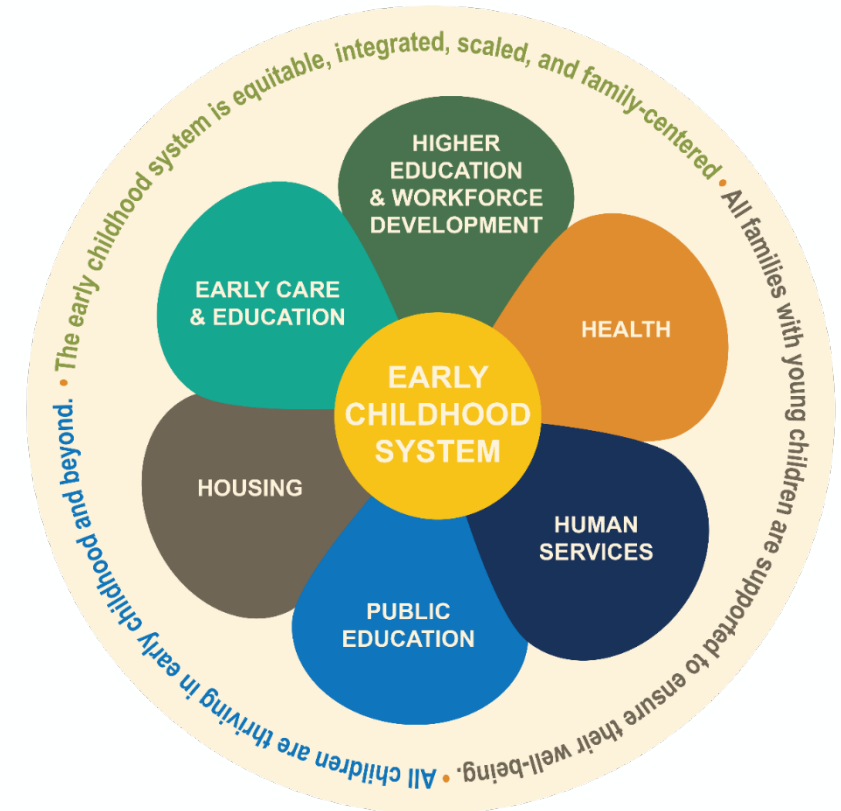


# Early Learning Council



The Early Learning Council is charged with coordinating a unified and aligned system of early learning throughout Oregon to ensure that all children, no matter what their background or their community, enter school ready to learn and that all families are healthy, stable and attached.

- Cross-sector agency representation
- Public body responsible for administrative rulemaking for DELC
- Sets cross-sector early childhood system vision through *Raise Up Oregon 2.0*





# Becoming DELC



The Department of Early Learning Care launched July 1, 2023 as a result of HB 3073 passing in 2021. While creation of DELC combined programs and services from several agencies, some services remain with our partner agencies.

## Oregon Department of Education

**Moved:** All programs within the Early Learning Division

**Stayed:** Early Intervention/Early Childhood Special Education

## Oregon Department of Human Services

**Moved:** Employment Related Day Care, Direct Pay Unit, and Inclusive Partners.

**Stayed:** ERDC eligibility determination through ONE and Oregon Eligibility Partnership.

## Oregon Health Authority

**Stayed:** Home visiting programs\*, including Universally Offered Home Visiting

## Oregon Housing & Community Services

**Stayed:** Co-location of Affordable Housing and Child Care

## Business Oregon

**Stayed:** Child Care Infrastructure Fund

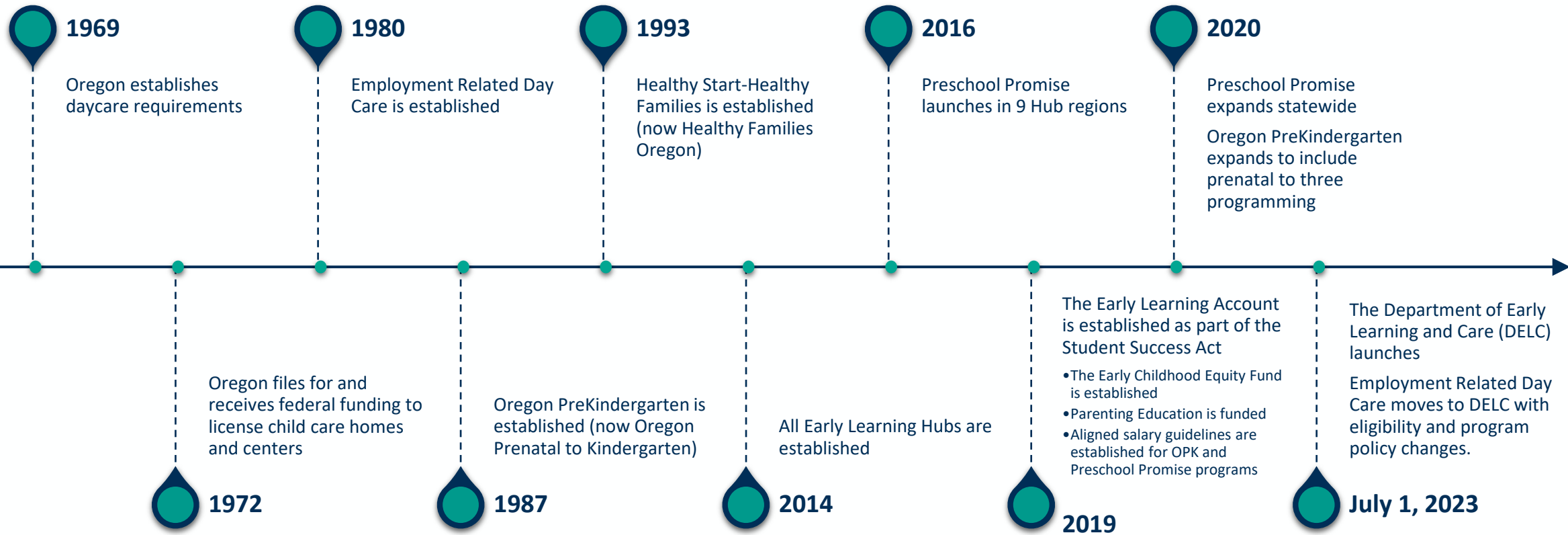
## Higher Education Coordinating Commission

**Stayed:** Oregon Student Child Care Grant, Early Childhood Professionals Scholarship

\*Healthy Families Oregon and OPK remain with DELC



# Oregon's Early Learning & Child Care History





# Early Learning & Child Care Programs: What it Looks like in Oregon



# DELC Programs and Foundational Services to Families and Early Childhood Workforce Development



## Core Programs

- Baby Promise
- Dolly Parton's Imagination Library of Oregon
- Early Childhood Equity Fund
- Employment Related Day Care
  - BOLI Apprenticeship (expanding to CHIPS)
  - Head Start Contracted Slots
  - High Needs Rate
  - Teen Parent Program
- Healthy Families Oregon
- Kindergarten Partnership & Innovation Fund
- Oregon Prenatal to Kindergarten

- Parenting Education
- Preschool Promise
- Relief Nurseries
- Tribal Early Learning

## Foundational Services

- Child Care Licensing & Compliance
- Child Care Resource & Referral entities
- Early Learning Hubs
- Every Child Belongs (early childhood suspension & expulsion prevention)
- Inclusive Partners
- Professional Learning for the ECE Workforce



# Child Care Licensing Division



The **Child Care Licensing Division (CCLD)** primary function is to inspect and license child care programs. CCLD ensures health and safety of children in child care by:

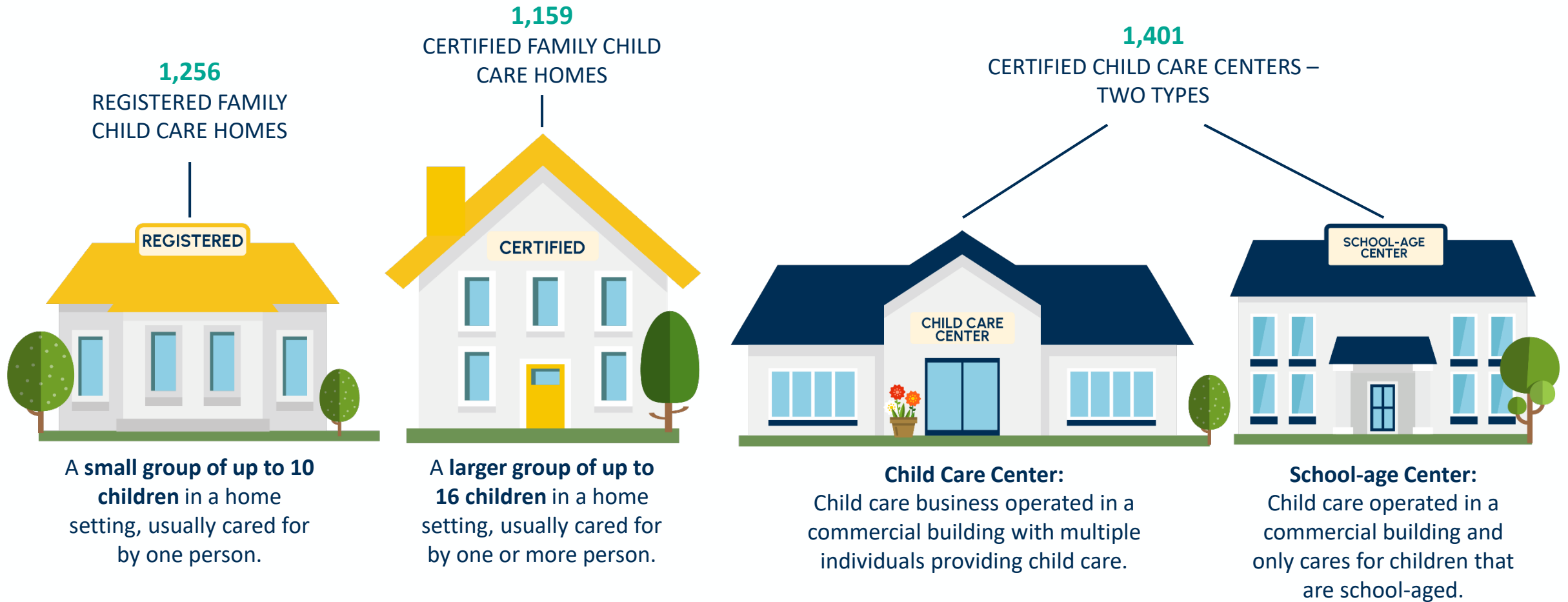
- **Providing Customer Service** to providers, families, and the public related to ERDC payment, Licensing, and DELC programs
- **Monitoring child care settings** for foundational health and safety licensing requirements.
- **Issuing and renewing licenses** to ensure ongoing compliance.
- **Providing technical assistance** to programs to improve safety and quality.
- **Conducting background checks** on all adults in contact with children while in child care settings.
- **Investigating complaints** and conducting tandem visits with the Office of Trainings, Investigations and Safety (OTIS) to investigate allegations of child abuse or neglect.
- **Reducing Barriers** through policy and rule revision to ensure reasonable and equitable enforcement





# Types of Licensed Child Care

As of January 2025



Coming in July 2025: Outdoor Nature Based-Programs



# Other Types of Care



## Recorded Programs

- **School-age:** Offers youth development activities to school-age children that does not take the place of a parent's care and is offered during non-school hours.
- **Preschool:** Offers educational activities to preschool-age children for less than four hours per day

## Regulated Subsidy

- License-exempt programs that qualify for ERDC funds with inspection and background checks.
- May be in-home care or center-based (such as school-district operated or recorded preschool)

## Other Exempt Care

- Operated by school-district or government entity
- Parent cooperatives, limited to four hours a day
- Care where parents remain on site, such as a gym or a supermarket

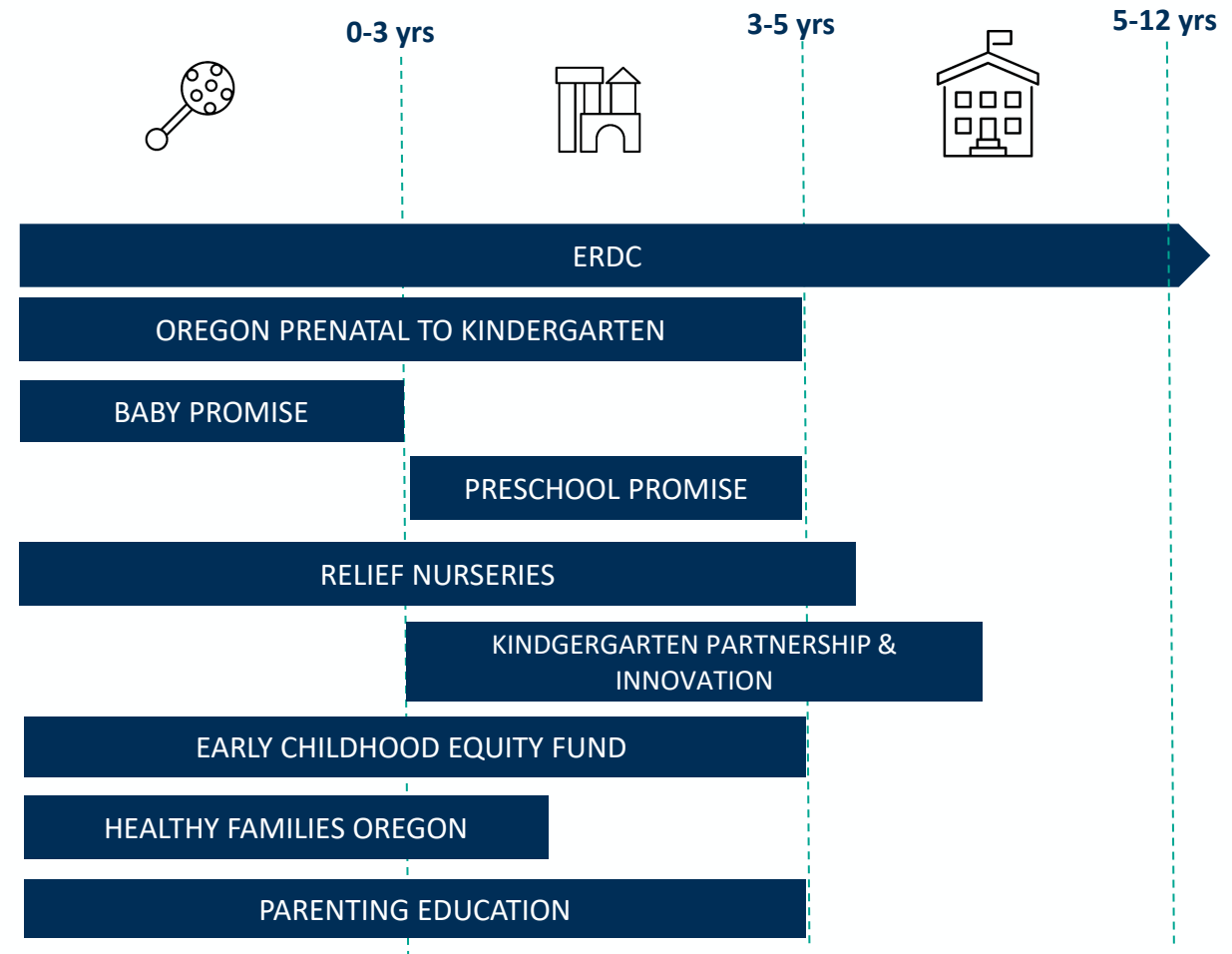


# Early Learning and Child Care Programs



Our programs promote:

- Affordability
- Early Literacy
- Learning and Development
- Family Support





**Early Learning and Care is delivered across a variety of settings.  
This is why it is known as a "mixed-delivery" system.**





# Early Learning and Care by the Numbers



**212,000**  
children in  
Oregon from  
birth through  
preschool age



**112,720**

licensed child care capacity  
(6 weeks to 12 years)

Requires a workforce of  
over **24,000**



**26,000**  
children served by  
ERDC



Annually over  
**32,000** publicly  
funded early  
learning slots



Over **320\*** Grantees  
providing service to  
children and families

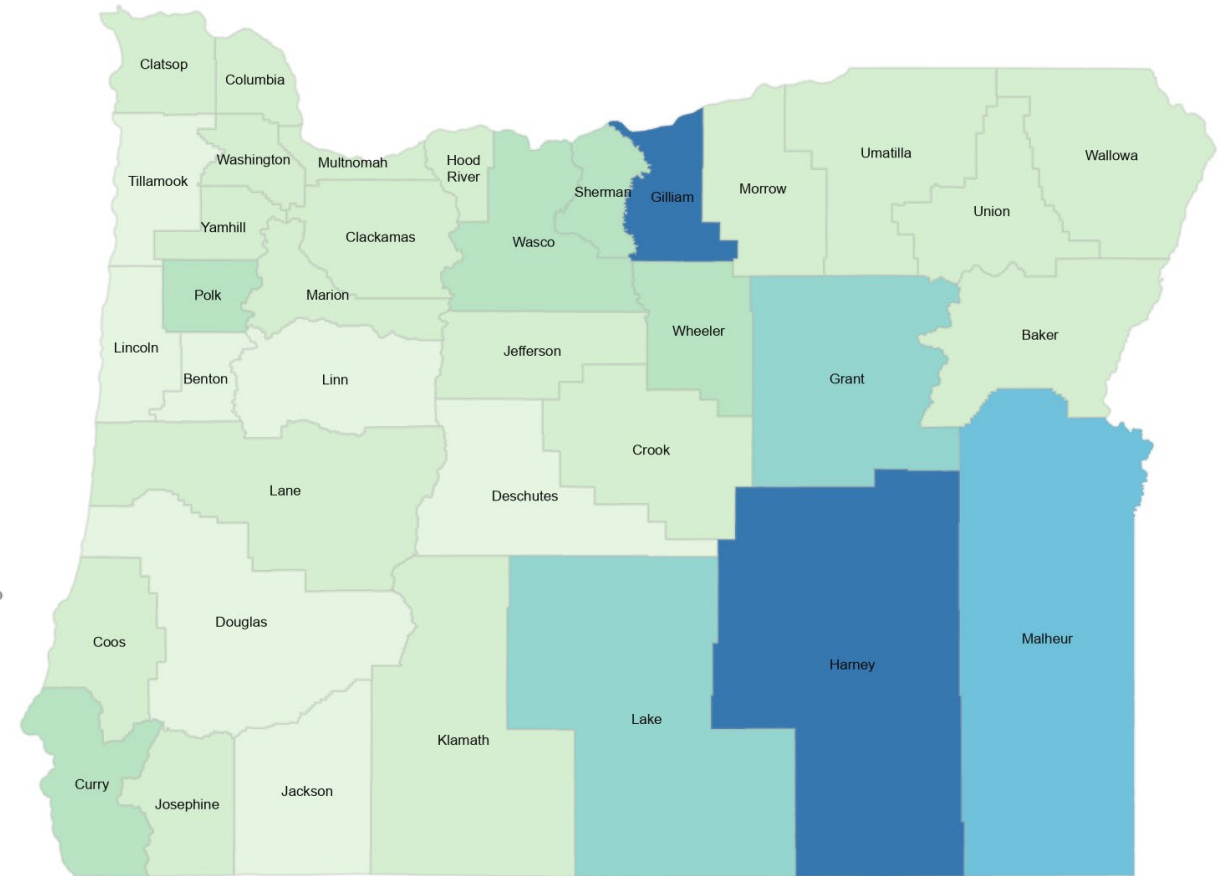
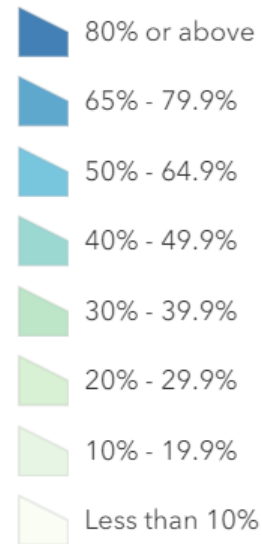
\*Reflects the number of grants administered for PSP, HFO, OPK, BP, ECEF, RN. Some programs have multiple grants and some programs sub-contract.



# 2023-2024 Percentage of Eligible (under 200% FPL) Children Under 5 with Access to a Publicly Funded Early Learning Slot



Similar to 2022-2023, in most Oregon counties, less than 40% of eligible children under 5 years have access to a publicly funded slot.



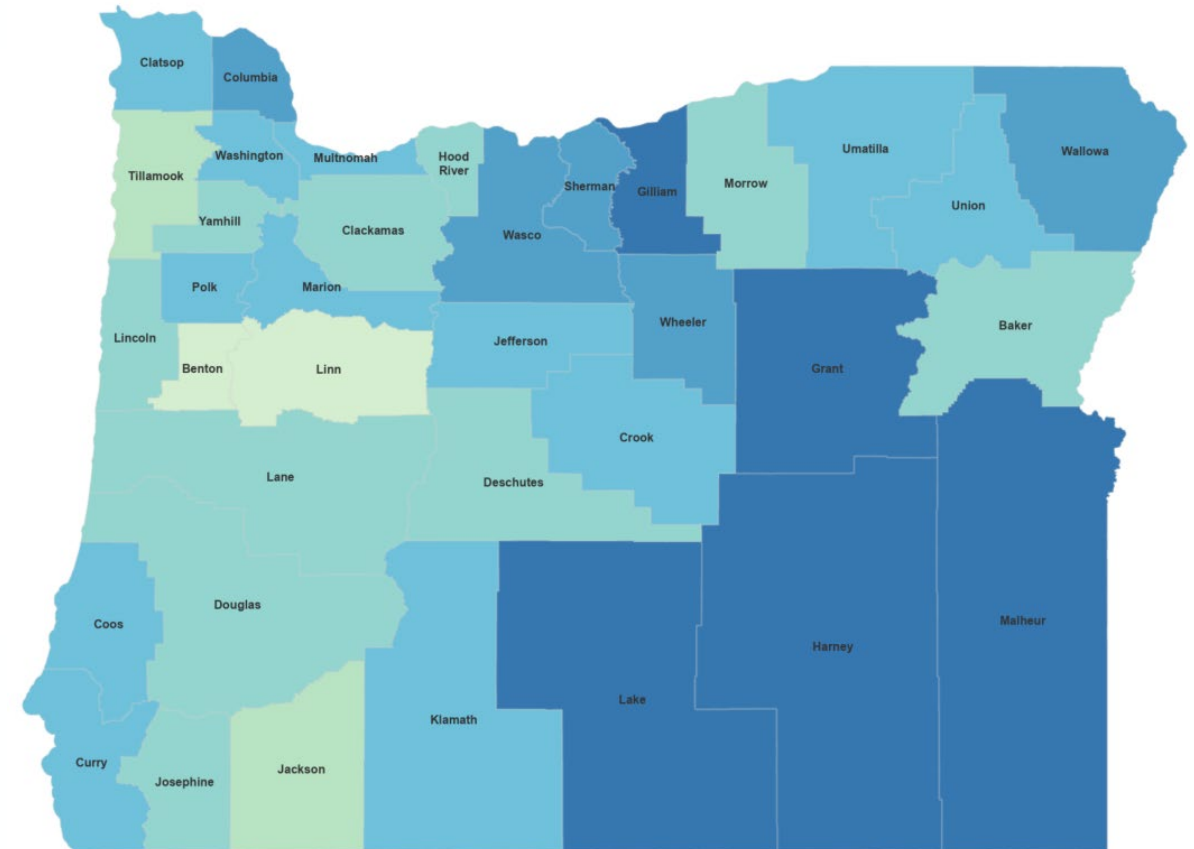
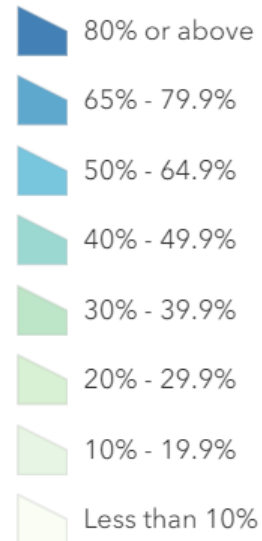


# 2023-2024 Percentage of Eligible (under 200% FPL) Preschool Age Children with Access to a Publicly Funded Early Learning Slot



2022-2023 expansion in preschool programs has increased access for preschool aged children (ages 3 and 4).

Many counties now have access rates above 50%, with 5 counties meeting saturation goals of 80% or more.



Note: Data includes 2022-23 slot estimates for the following programs: Preschool Promise, Oregon Pre-Kindergarten and federal Head Start. Tribal Head Start, Migrant & Seasonal Head Start, and other publicly funded program data are not included. Source: Early Learning Division

Total population defined as children ages 3 & 4 living in families below 200% of the Federal Poverty Level; Source: ACS 5-Year Estimates – 2021

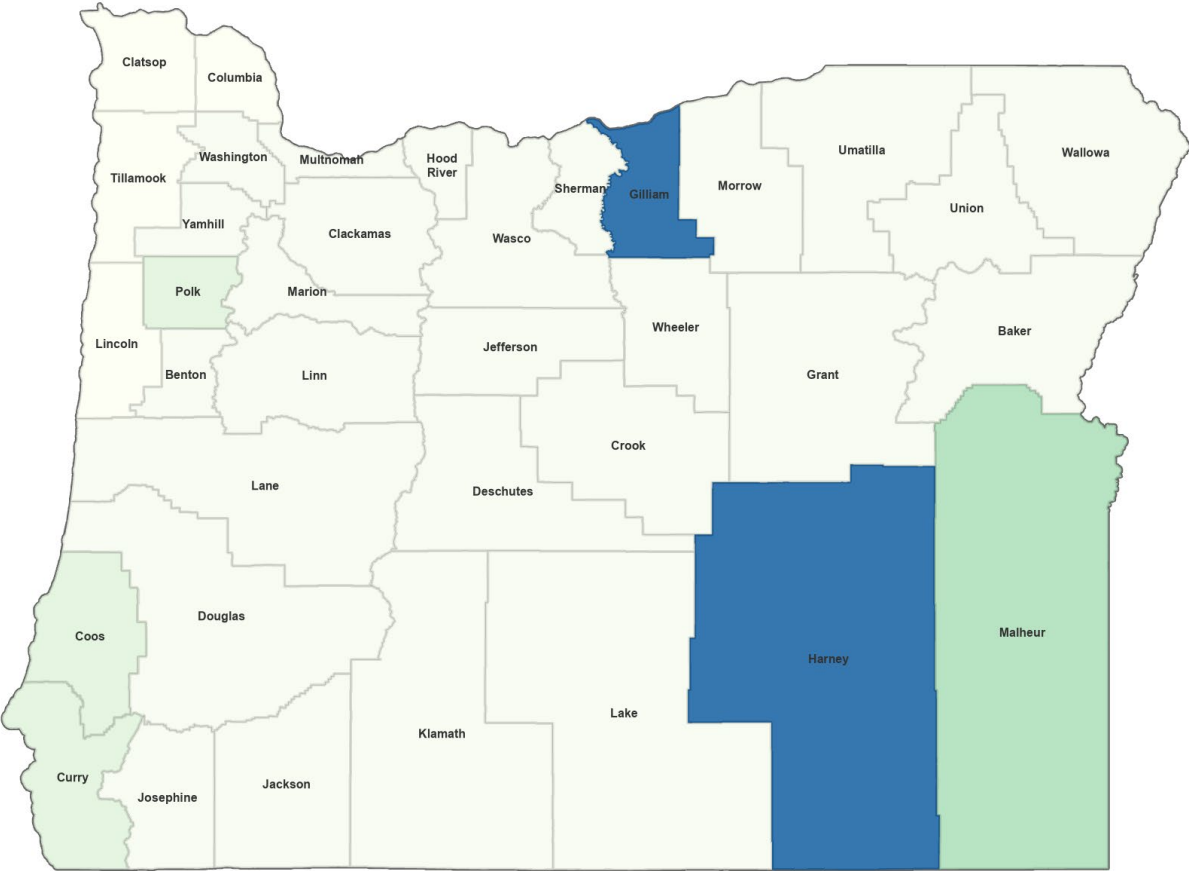
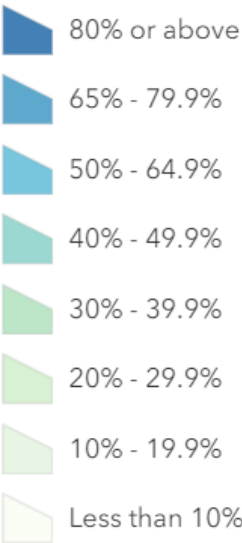


# 2023-2024 Percentage of Eligible Children 0-2 with Access to a Publicly Funded Early Learning Slot



In most of Oregon’s counties, less than 10% of eligible infants and toddlers have access to a publicly funded slot.

All counties except 3 have access rates lower than 20% for eligible infants and toddlers. Some sparsely populated counties have reached full saturation at 80% or above.



Note: Data includes 2022-23 slot estimates for the following programs: Baby Promise, Oregon Prenatal to Three and federal Early Head Start. Tribal Head Start, Migrant & Seasonal Head Start, and other publicly funded program data are not included. Source: Early Learning Division  
Total population defined as children ages 0-2 living in families below 200% of the Federal Poverty Level; Source: ACS 5-Year Estimates – 2021



# DELC Strategic Plan: **Growing Oregon Together**



GOAL 1: **Access** All families have access to high-quality (culturally responsive, inclusive, developmentally appropriate) and affordable early learning and care that meets their needs.

GOAL 2: **Tribal Sovereignty** DELC honors and recognizes the sovereignty of the nine federally recognized Tribal Nations within Oregon and ensures strong government-to-government relationships to benefit Tribal communities.

GOAL 3: **Infants and Toddlers** All families with infants and toddlers are supported through early learning and care programs that recognize and meet their unique needs.

GOAL 4: **Workforce** The early learning and child care workforce is diverse, culturally responsive, highly qualified, and well compensated.

GOAL 5: **Relationships** DELC deepens community engagement and empowerment, sustains partnerships, and communicates effectively.

GOAL 6: **Foundations** DELC develops and improves operational foundations to efficiently serve Oregonians.

<https://www.oregon.gov/delc/about-us/Pages/default.aspx#StrategicPlan>





# Questions

---



# DELC Contacts



**Alyssa Chatterjee**, Director,  
[alyssa.chatterjee@delc.oregon.gov](mailto:alyssa.chatterjee@delc.oregon.gov), 971-283-1271

**Kate Denison**, Government Affairs Manager,  
[kate.denison@delc.oregon.gov](mailto:kate.denison@delc.oregon.gov), 503-551-6826  
*(on leave thru Feb)*

**Kathy Wai**, *Interim* Government Affairs Manager,  
[kathy.wai@delc.oregon.gov](mailto:kathy.wai@delc.oregon.gov), 971-428-7466

**DELC Government Affairs Team**,  
[delc.govaffairs@delc.oregon.gov](mailto:delc.govaffairs@delc.oregon.gov)