



Health Share of Oregon

Maggie Bennington-Davis, MD, MMM

Chief Medical Officer

January 2025



Fast facts – Health Share of Oregon

Clackamas, Multnomah, Washington counties

467,000 members

40,000 children from ages 0-5

6000 births a year

Health Share of Oregon – founding partners

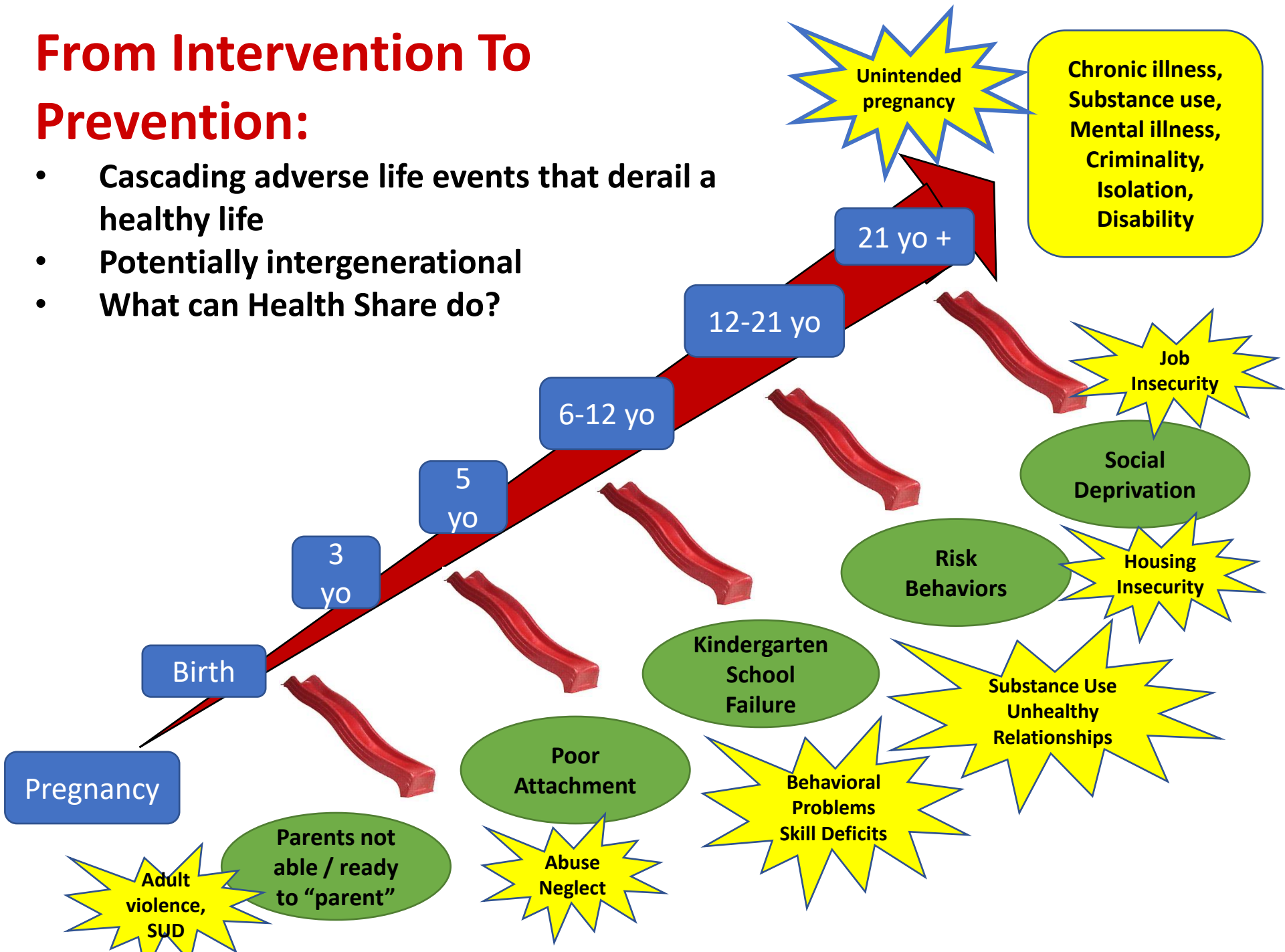


Health Share of Oregon – family of plans: members choose



From Intervention To Prevention:

- Cascading adverse life events that derail a healthy life
- Potentially intergenerational
- What can Health Share do?



Creating Healthy Communities...



Pediatric Metrics Currently Incentivized

Incentive Metric Name
Childhood Immunization Status
Immunizations for Adolescents
ODHS Assessments
Preventive Dental Services, ages 1-5
Preventive Dental Services, ages 6-14
Well-Care Visits Ages 3-6
Social-Emotional Health

North Star Goal: That Children Are Ready for Kindergarten (because the rest will follow!)

We continue to work to ensure our families and communities have:

- Access to best match behavioral health
- when they need them
- In a setting that works for them



- Developed in 2015 by Health Share and Dr. Helen Bellanca
 - Designed for women who are pregnant and have substance use disorders
 - Includes prenatal care and support from peers who have been through this, doulas and midwives with cultural experience, addiction counselors and addiction medication if the person wants it, family medicine or OB providers, and parenting support for up to a year (sometimes longer) after birth
 - Outcomes include much more prenatal care, avoidance of the need for extended neonatal stays or neonatal intensive care unit admission, people able to keep their babies (and even have older children returned to their care), decreased medical costs of newborns, and MUCH higher satisfaction of both patients and providers
- Does NOT include housing, which is key to a healthy start
 - Does NOT have a sustainable funding mechanism

health

share

Three (modest) wishes

1. OHA child health strategy team
2. Project Nurture: gold standard, include housing, financial stability
3. Return of the children's health complexity data

