

SUSTAINABLE CITY YEAR PROGRAM



SCYP is simultaneously:

**Great for Student Learning
Great for Workforce Development
&
Great for Oregon Communities**

Project-Based Learning & Public Service





City of Oakridge Industrial Park



The Oakridge Industrial Park, located on **Highway 58** in east Oakridge, features a mix of **industrial, mixed used/flex, and commercially zoned** parcels, proximity to major transportation routes, and **250 acres** of undeveloped, **city-owned property** tucked away in a beautiful mountain setting.



Flexible and affordable land,
13 open lots for sale/lease



Fiber optic network access
for high-speed internet



Proximity to I-5 corridor,
Eugene airport, and Portland

DEVELOPMENT INCENTIVES



STATE

Oregon offers a favorable climate for thriving businesses through **financial incentives** and renowned **quality of life**.



REGIONAL

With a strong connection to **Business Oregon**, administrators are experienced helping companies **obtain funds**.



LOCAL

Oakridge is a designated **enterprise zone**, opening doors for **property tax abatements** and existing business **partnerships**.

Per Acre Land Cost Comparison



Parcels for sale or lease are **flexible**. Lots are zoned industrial, mixed, or commercial use respectively, but similar parcels **can be combined to adapt** to company needs.

“Oakridge is a tight-knit community, people are here to support you!”

- Don Grant, Current OIP Tenant

INTERESTED? CONTACT:

James Cleavenger, City Administrator
cityadministrator@ci.oakridge.or.us
(541) 782 - 2258
<https://www.ci.oakridge.or.us/>

Urban Infill in OAKRIDGE



SITE 1: HAZEL & 1ST

Site Size:
~5000 sqft

Complex 1:
2 TOWNHOUSES
2 STORIES
2 BED 3 BATH
1 CARPORT EACH
~1200 SQFT EACH

Complex 2:
1 FLAT ABOVE A STORE
1 STORY
3 BED 2 BATH
1 PARKING SPACE
1 COMMERCIAL LOADING SPACE
~1200 SQFT



SITE PLAN 16'-1.0" ⌚

Floor Plans 16'-1.0" ⌚

NORTH/SOUTH FACADE AND SECTION

EAST/WEST FACADE AND SECTION





Corvallis 9th Street Urban Redesign

Fall 2023
Corvallis

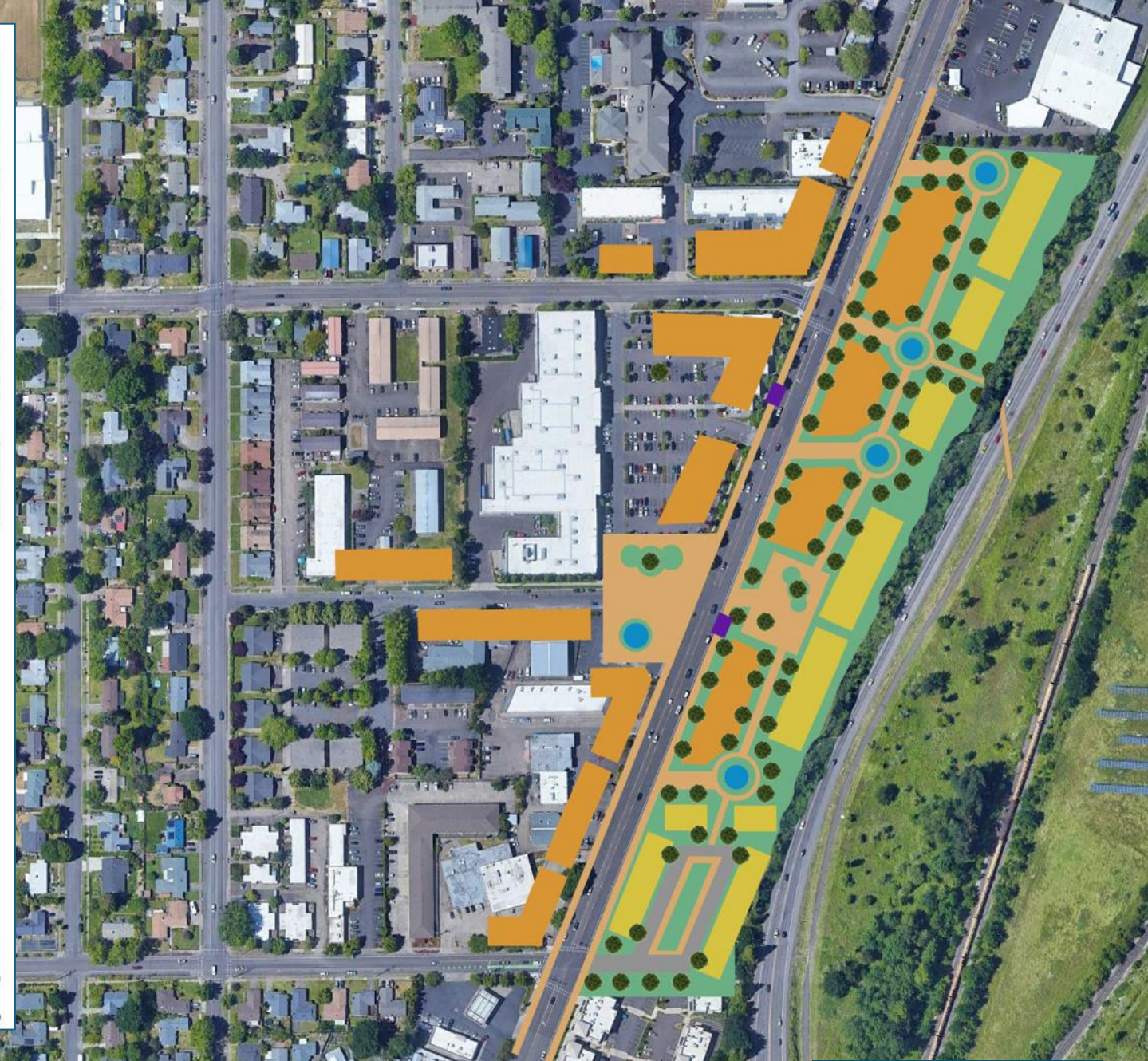
Lauren van Vliet

Report Author • School of Planning, Public Policy and Management

Megan Banks, Kaarin Knudson, Alex Li, Marc Schlossberg

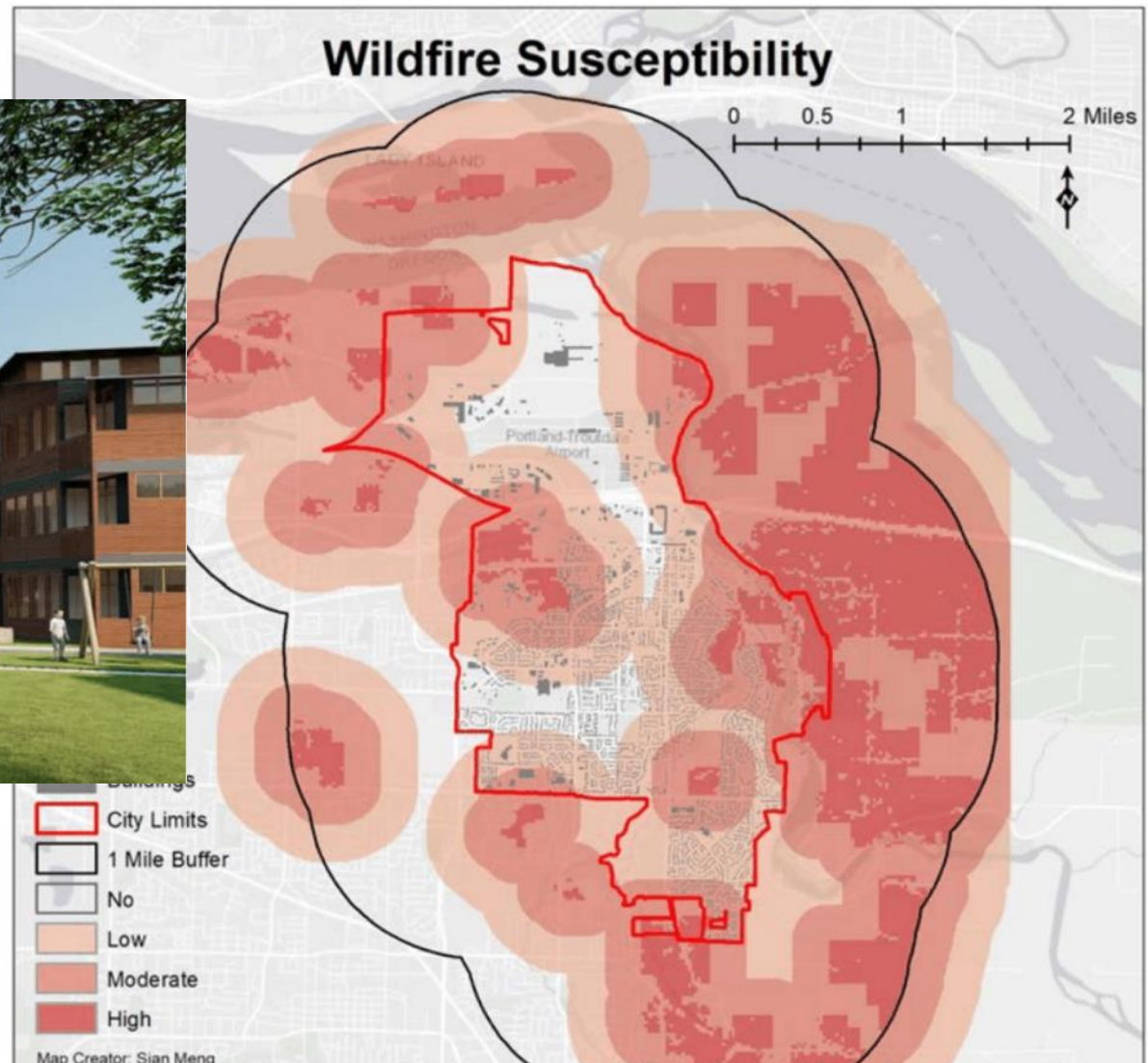
Faculty • School of Planning, Public Policy and Management

COLLEGE OF DESIGN





Revitalizing the Overlook Tract

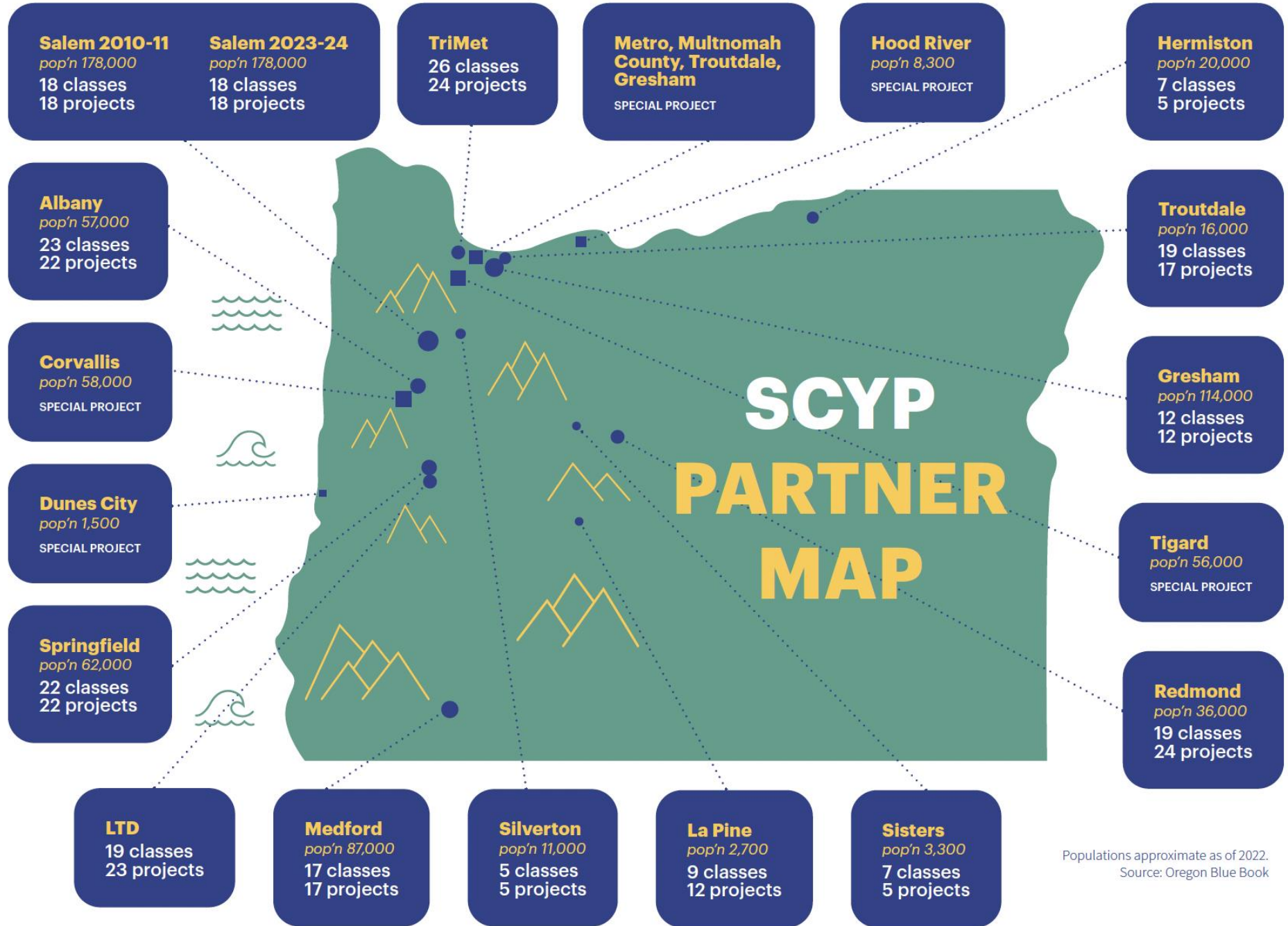


Troutdale Hazard Vulnerability Analysis Project

Who have we partnered with to date?



Current Year:
 Oakridge
 Bend
 Gresham
 Silverton



Populations approximate as of 2022.
 Source: Oregon Blue Book

SCYP Stats

- ✓ **5,000+ Students (undergraduate & graduate)**
- ✓ **300+ Courses / Projects**
- ✓ **25 Academic Majors, 130+ Faculty**
- ✓ **Multiple Universities (UO, OSU, PSU, EOU)**
- ✓ **750,000+ Hours toward community goals**
- ✓ **11 Urban + 9 Rural Community Partners** (so far)

- ✓ **\$3+ million in partner contributions**
- ✓ **\$5+ million University contribution (in-kind)**

External Match Is Critical For Community Access to SCYP

With a goal of increasing usership



The SCYP program has been an excellent collaboration between the City of Redmond and the University of Oregon professors and students. The quality of work contributed and the enthusiasm shown has led to some outstanding results. The money invested by Redmond is what I consider funds well spent, and I would do it again.



Former Mayor George Endicott,
City of Redmond

SUSTAINABLE CITY YEAR PROGRAM

