

Presentation to the 2025 House Early Childhood
and Human Services Committee

ODHS Agency Overview

Fariborz Pakseresht, Director, Oregon Department of Human Services

January 23, 2025

Everyone in
Oregon deserves
the opportunity to
reach their full
potential.



What surrounds us shapes our ability to reach our potential



Unlocking our potential



Sometimes we face barriers to reaching our potential.



ODHS services help make sure everyone has the **keys they need to unlock their potential and thrive.**

Our history



1971

The Oregon Legislature creates the **Oregon Department of Human Resources**



New agencies take on parts of ODHR's original functions:

- Corrections
- Employment
- Youth Authority
- Housing and Community Services



2001

The Legislature reorganizes the department and changes its name to the **Oregon Department of Human Services (ODHS)**.

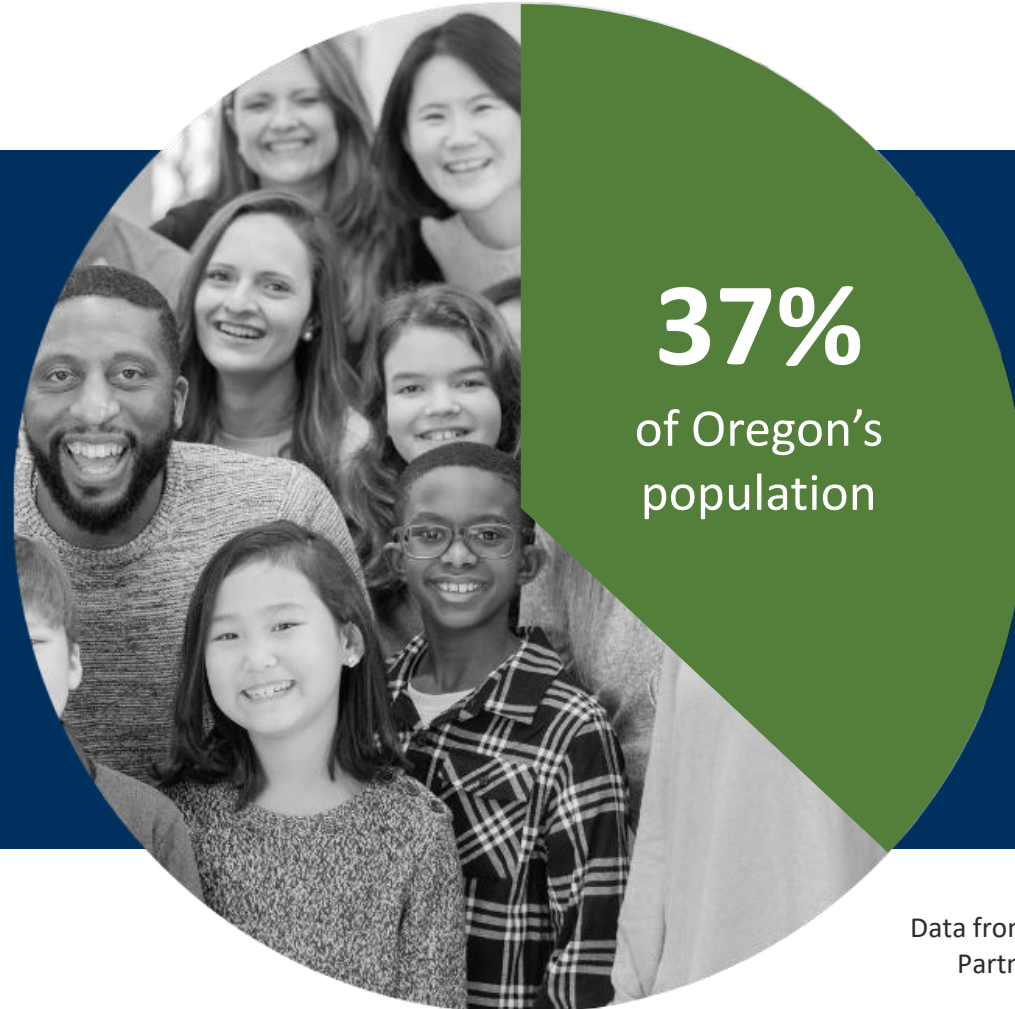


2011

The Legislature transfers many of the department's health-related functions to the newly created **Oregon Health Authority**. ODHS/OHS Shared Services continue to support both agencies.

Working with communities to build well-being

1.57 million Oregonians
are receiving benefits
through the ONE
Eligibility system.



Data from the ODHS Oregon Eligibility
Partnership dashboard: Dec. 2024

Our organizational structure

ODHS Leadership

Direct Services

Six major programs:

- Aging and People with Disabilities (APD)
- Child Welfare (CW)
- Developmental Disabilities Services (ODDS)*
- Oregon Eligibility Partnership (OEP)
- Self-Sufficiency Programs (SSP)
- Vocational Rehabilitation (VR)

*ODDS is sometimes referred to as "I/DD"

Support Functions

- **Central Services** including:
 - Budget
 - Human Resources
 - Tribal Affairs
 - Equity and Multicultural Services
 - Immigrant and Refugee Advancement
 - Office of Resilience and Emergency Mgmt.
- **ODHS/OHA Shared Services**

Participation highlights

1,377,079

adults and youths
participating in
**Health Services
Medicaid (HSM)**

751,854

participating in
**SSP's Supplemental
Nutrition
Assistance
Program (SNAP)**

55,597

participating in
**Temporary
Assistance for
Needy Families
(TANF)**

42,780

receiving OAA,
LTSS and APS*
services
through APD

36,148

served by
ODDS

9,619

served by
VR

4,740

children in
foster care

869

children
▼
receiving
in-home
supports

Point-in-time data, June 2024 from the Office of Forecasting, Research and Analysis except
LTSS data (from Office of Aging and People with Disabilities) and Child Welfare data (from CW dashboard).

*Older Americans Act, Medicaid Long-Term Services and Supports, Adult Protective Services

Serving in nearly every Oregon community

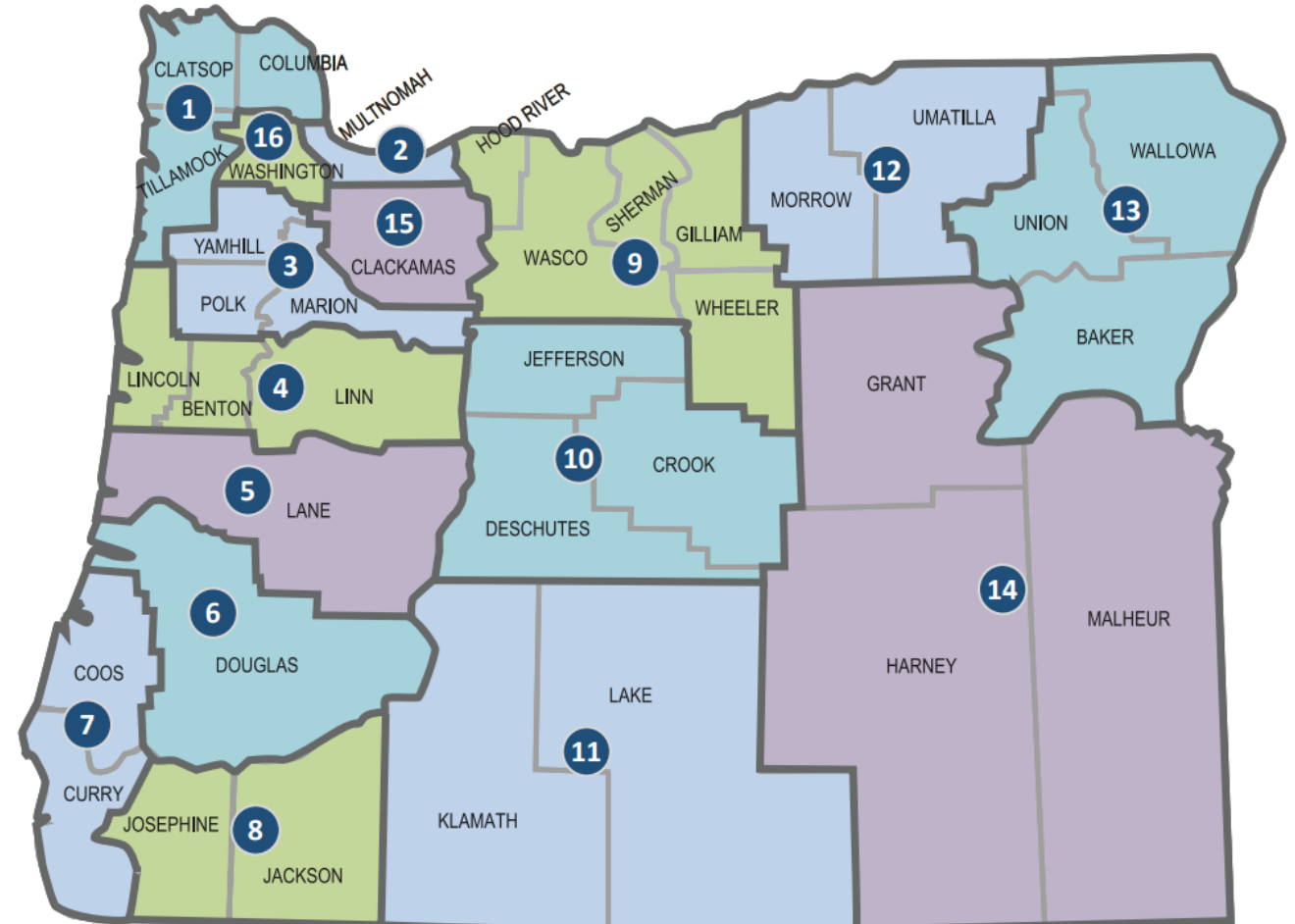
Statewide:

11,282
Employees*

16
ODHS
Districts

148
Storefront
Offices

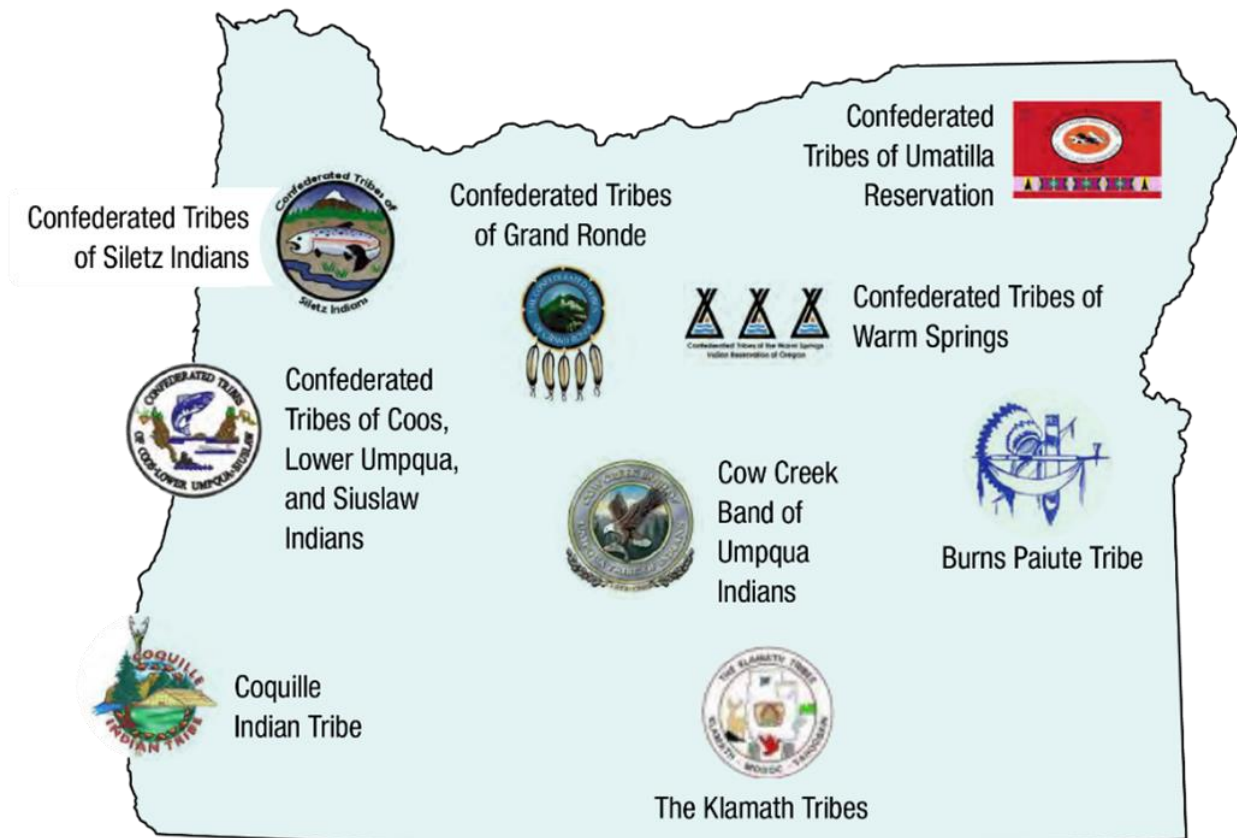
*2023-25 Legislatively Approved Budget
(LAB) following Sept. 2024 Emergency
Board actions



Government-to-government relationships

- Service partnerships
- ODHS | OHA Tribal Consultation Policy
- Oregon Indian Child Welfare Act (ORICWA) implementation

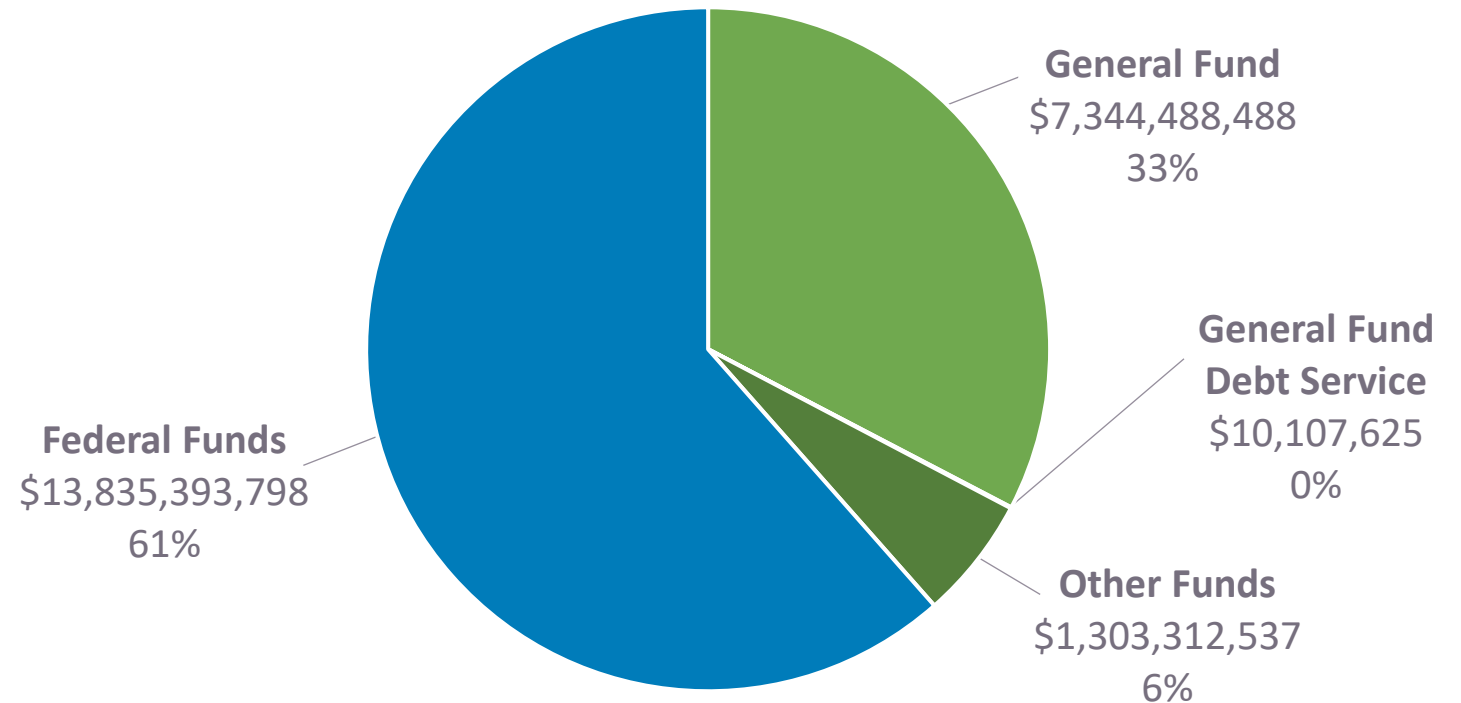
The Nine Federally Recognized Tribes in Oregon



2025-27 Governor's Recommended Budget

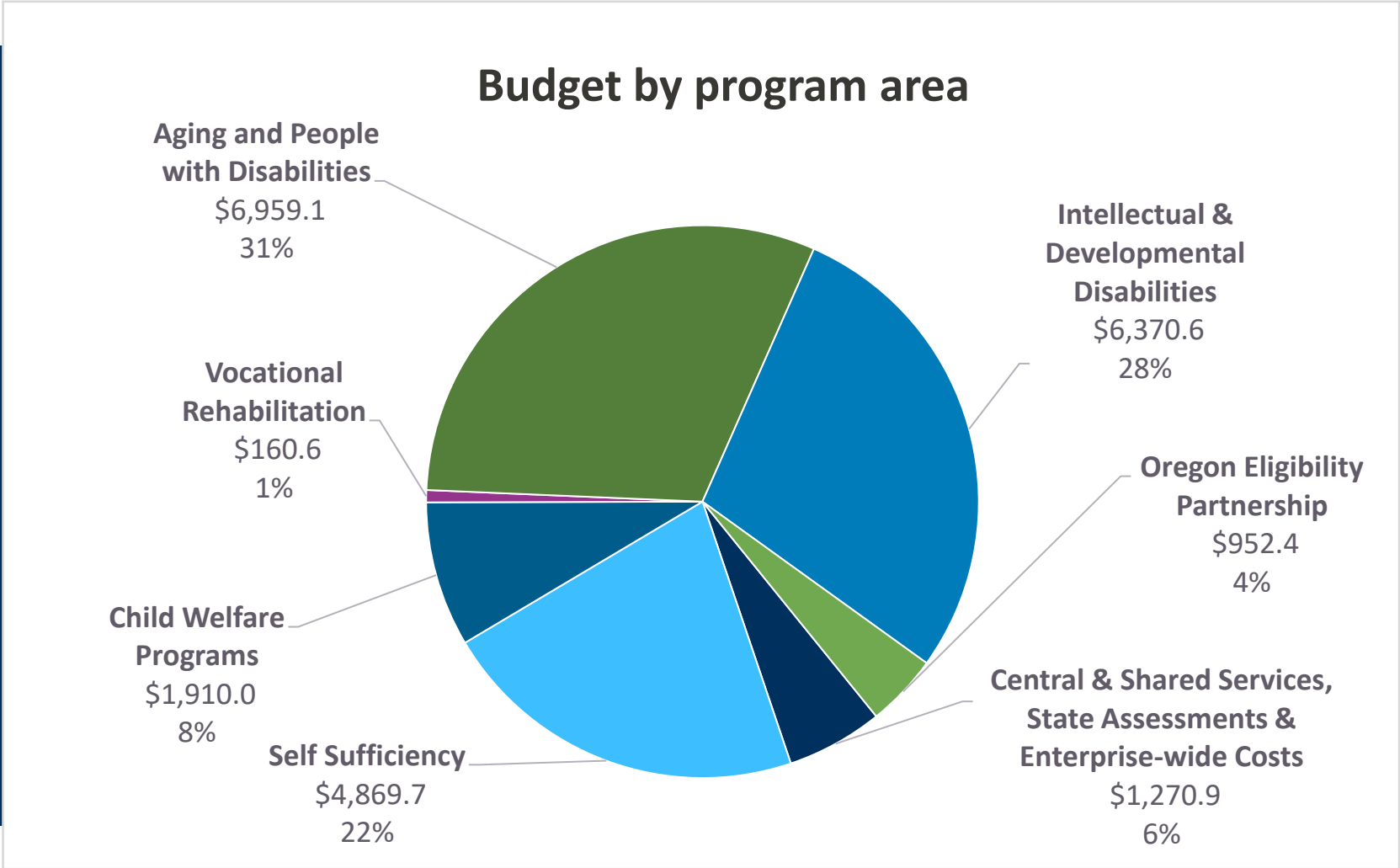
Total budget:
\$22,493,302,448

ODHS budget by fund type



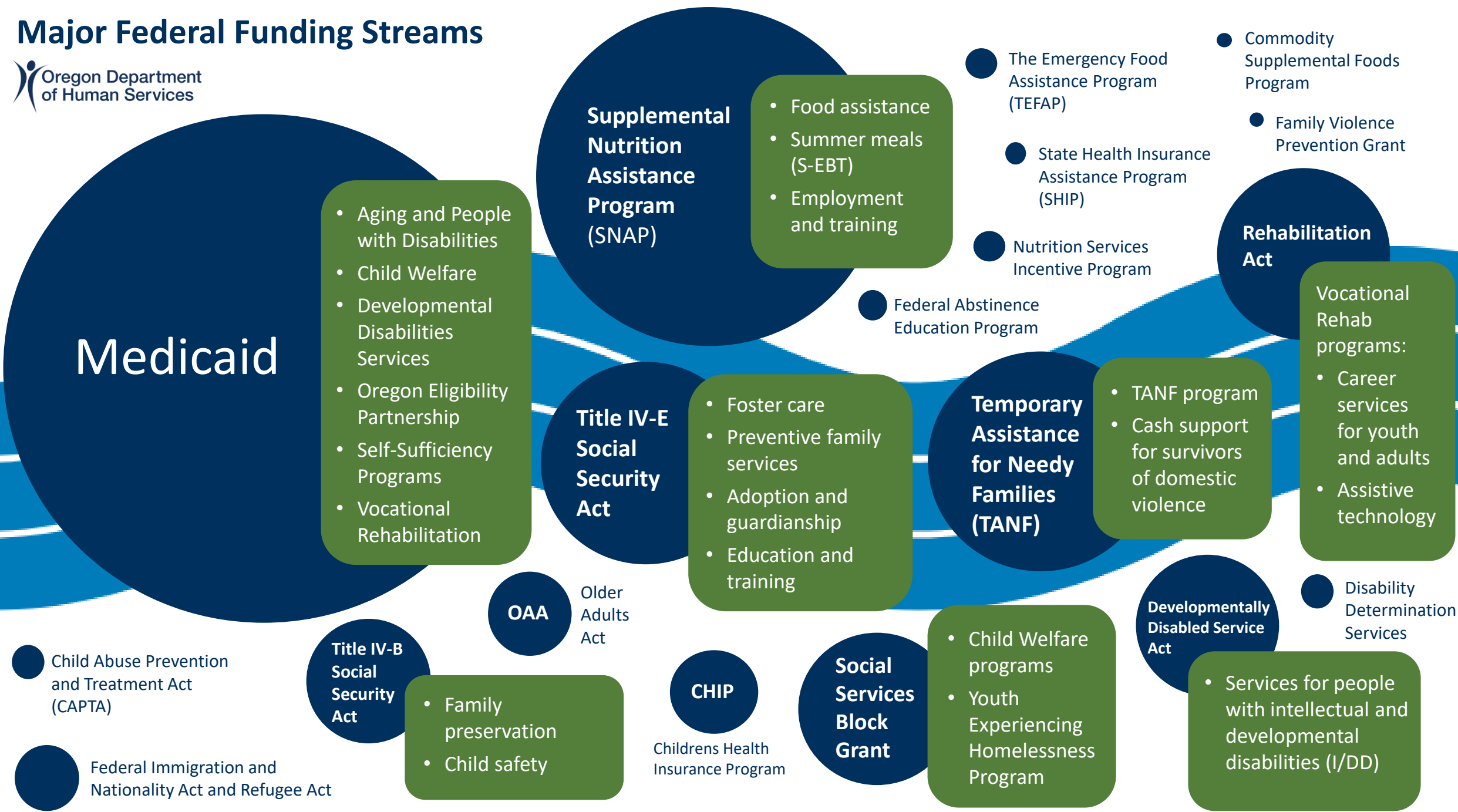
2025-27 Governor's Recommended Budget

Total budget:
\$22,493,302,448



All dollars in millions

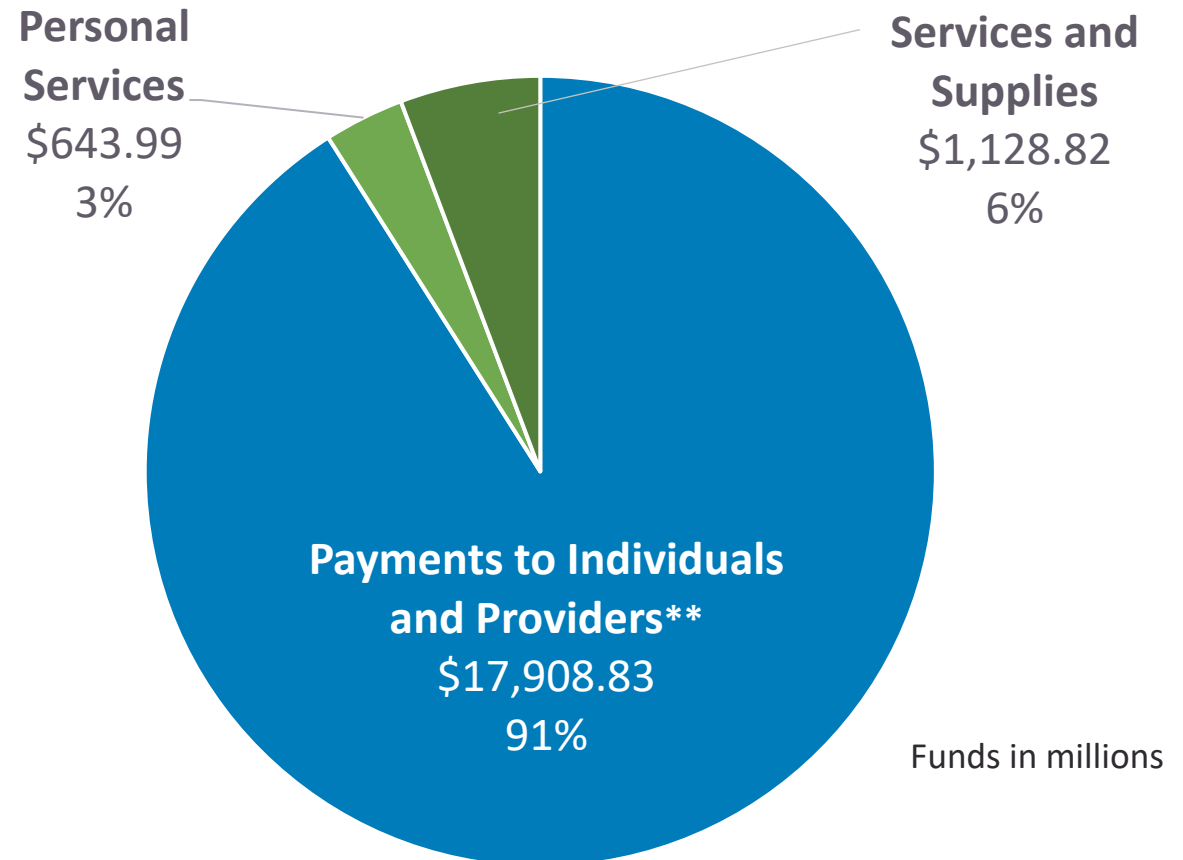
Major Federal Funding Streams



Our budget is community-focused

More than 90% of the ODHS budget* goes to communities in the form of payments to clients, providers and direct-services staff.

*2023-25 Legislatively Approved Budget (LAB) following Feb. 2024 Regular Session



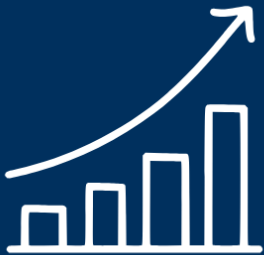
**Includes service delivery staff costs

Challenges and Priorities: 2025-27



Key challenges

Increasing caseloads



Particularly long-term care caseload in Aging and People with Disabilities

Widening gap between cost of services and available resources



55% funding for Oregon Eligibility Partnership workload model

Aging technology



Critical applications like payment systems using legacy technology

Nonprofit partner + provider constraints



Under-resourced provider workforce

Key priority: Customer service



- Improving supports for children and families
- Improving services to Tribes and Tribal members
- Ensuring service equity for Oregon's rural communities

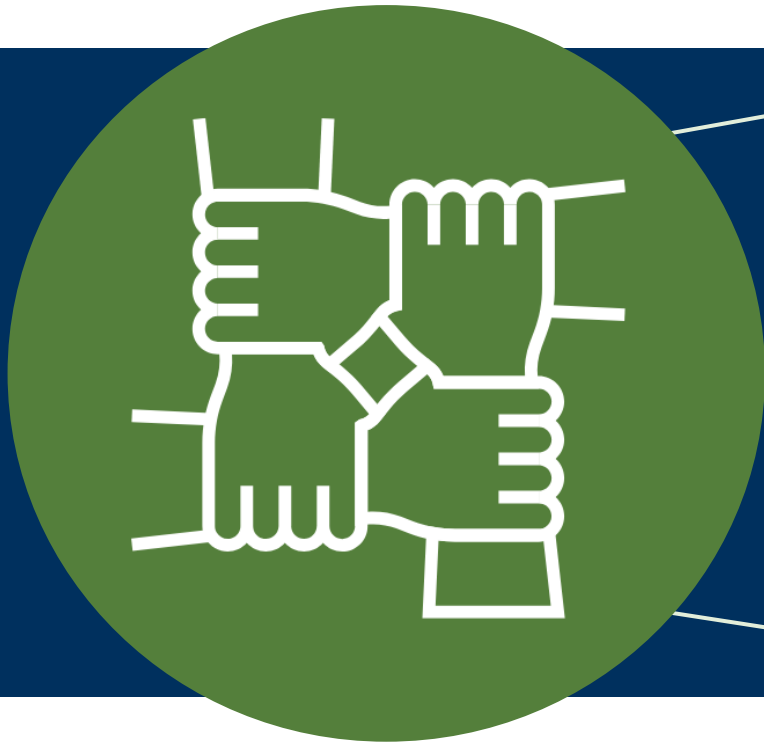
Key priority: Safety



- Increasing capacity for regulatory oversight of contracted providers
- Increasing appropriate placement options for children and adults with complex needs
- Ensuring ODHS buildings around the state are safe for our clients and staff

Key priorities:

Emergency preparedness and community resilience



- IT systems to aid in emergency feeding, sheltering and case management
- Continuing water delivery mission to areas impacted by drought or contamination
- Resilience Hubs and Networks grant program

Statewide Tour 2024:

Connecting with community



17

communities
from St. Helens
to Ontario to
Brookings

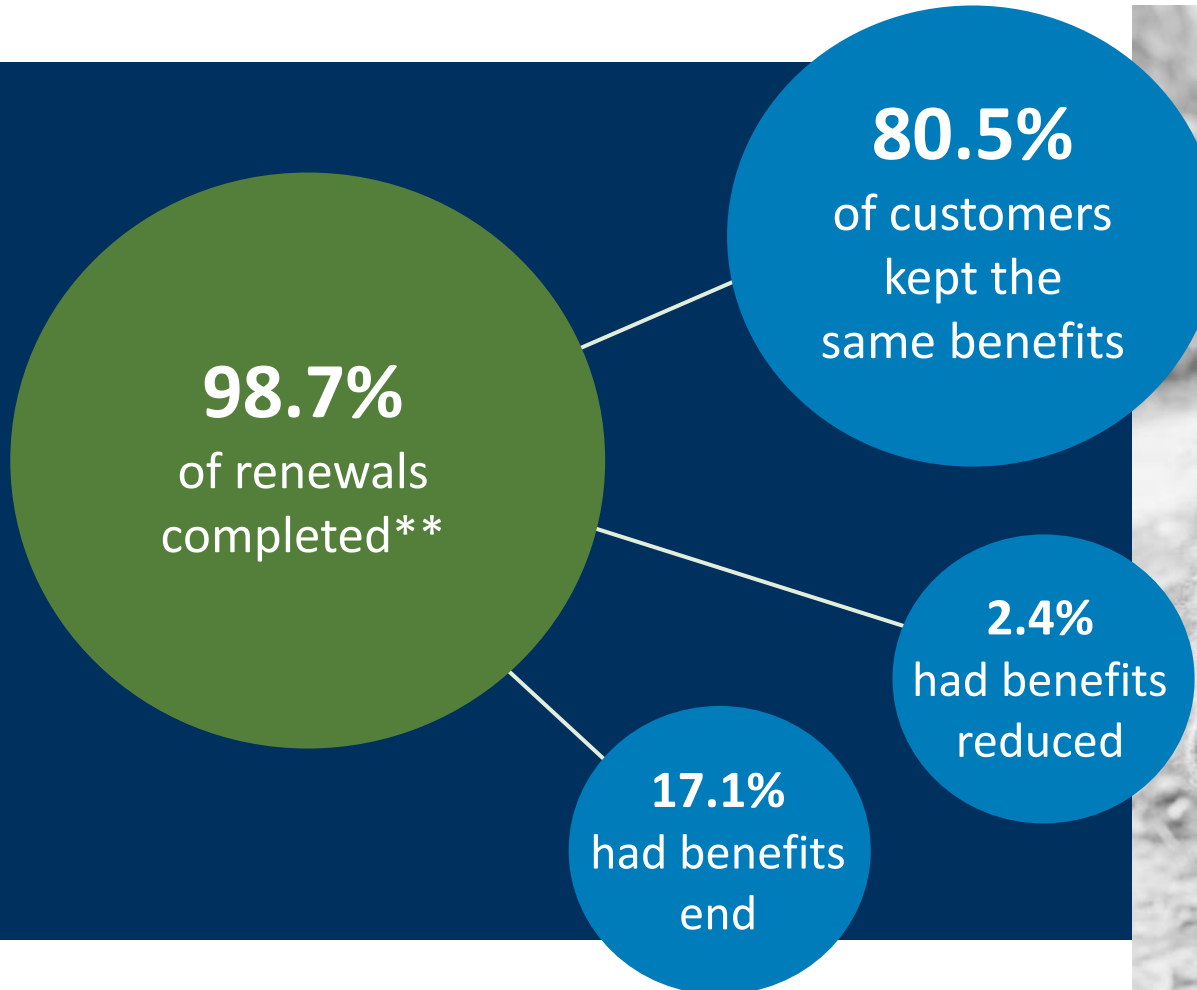


Partnership success stories: 2023-25



Public Health Emergency unwinding: Keeping Oregonians covered

Oregon had the highest Medicaid renewal rate in the nation as of August 2024.*



*Among reporting states. KFF: [Cumulative Medicaid Renewal Outcomes for Reporting States](#).

**As of Dec. 8, 2024

Summer EBT:

Ensuring kids don't go hungry when school's out

More than
343,000
children
participated

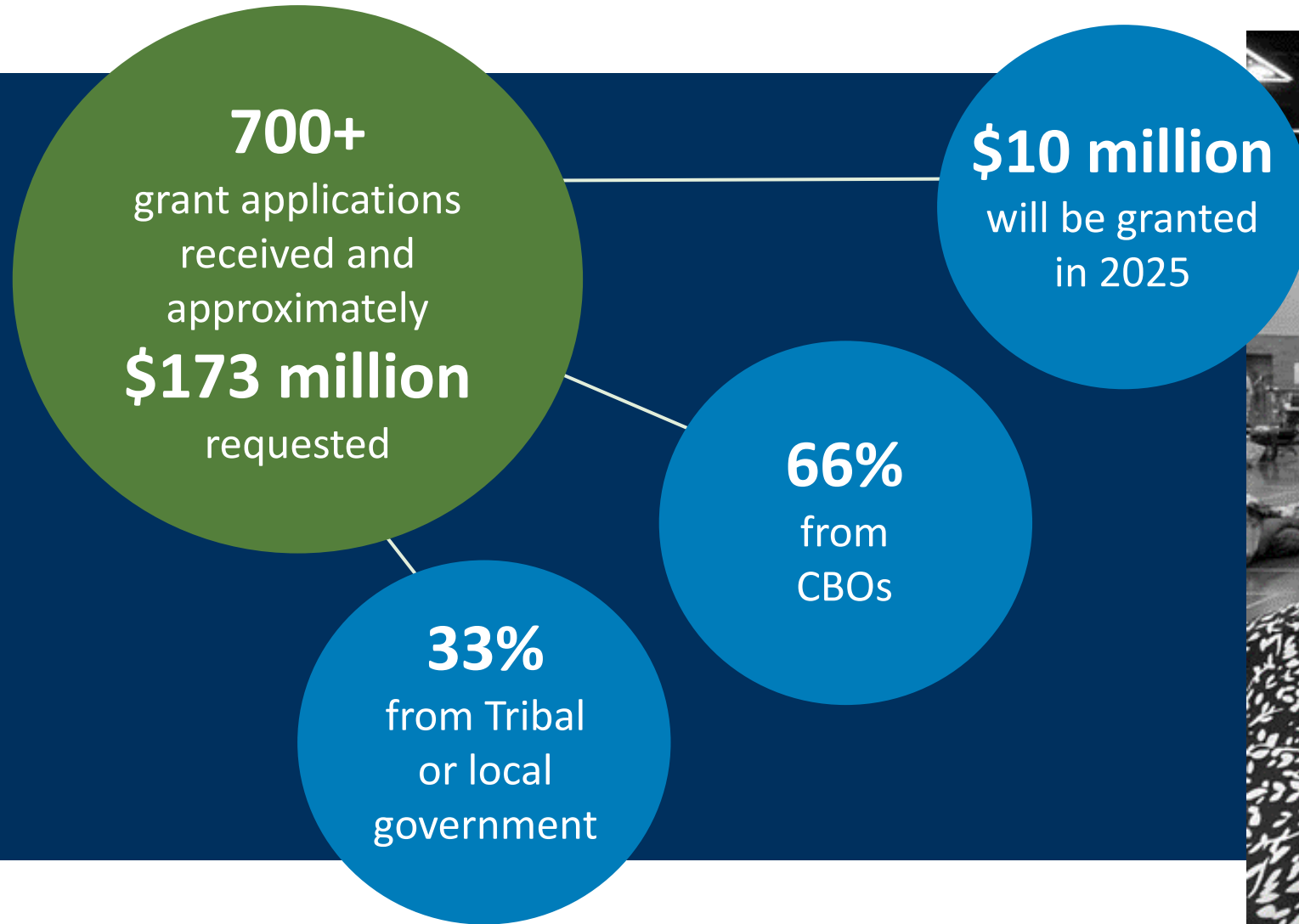
\$41 million
in issued benefits

\$120
for each
eligible
child

97%
of eligible families
automatically
enrolled



Advancing community resilience: Resilience Hubs and Networks Grant



Mobile units: Serving people where they are

1,495

people engaged
by mobile units
serving Coos,
Curry and
Washington
Counties*

382

people received
system
navigation
help

130

benefits
applications
completed



*District 7 data (Coos and Curry) from Jul 2023-Dec 2024;
District 16 data (Washington) from Aug 2023-Nov 2024

Family Preservation demonstration: Piloting a family coaching model

What wasn't working:

Families overburdened by poverty, health issues, or substance use disorder would often fall through community safety nets and land in the child welfare system.

What's working now:

Collaborating to support and stabilize families earlier, ODHS Child Welfare and Self-Sufficiency Programs are:

- Providing intensive coaching 3-4 times per week.
- Connecting families to financial, housing, health and transportation resources.
- **Seeing reduced case duration and fewer children in foster care.**



*Average cases open after a CPS assessment and assigned case: 17 months for a general permanency case vs 9 months for a Family Preservation case (ODHS District 2 data).

Family Preservation demonstration

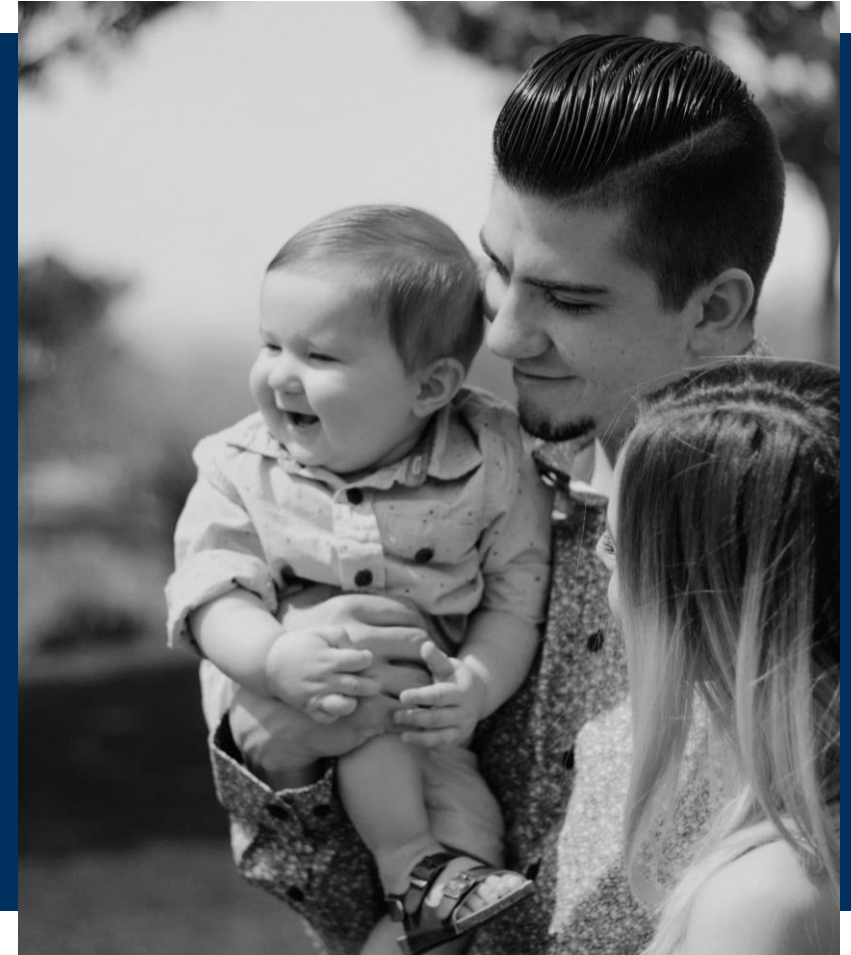
8 sites around the state:

- Douglas County
- Coos/Curry Counties
- Jackson/Josephine Counties
- Klamath County
- Polk County
- Washington County
- Multnomah County: Alberta
- Multnomah County: Gresham

Children staying
safely with
their families:

80%

92%



Pre-Employment Transition Services: Supporting students' career dreams

3,195

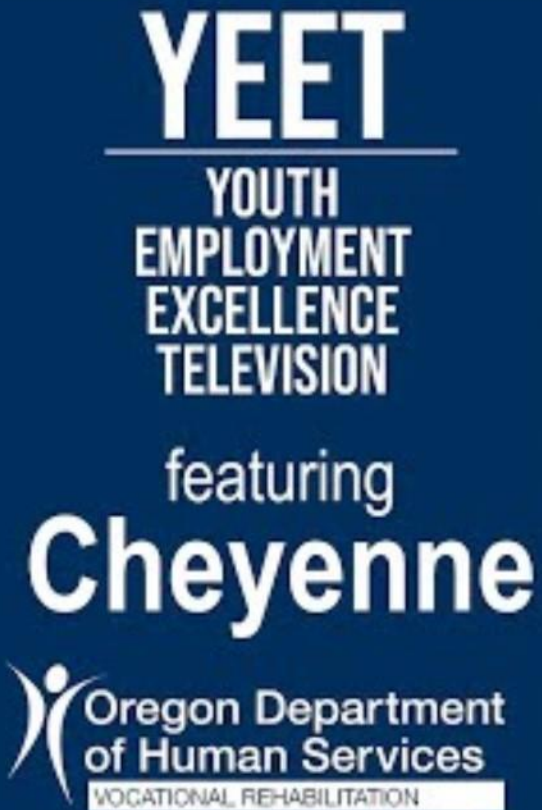
average number of
youth ages 14-21
served per quarter
in SFY 2024

542

students*
participated in
summer work
experiences

222

were students
with I/DD





Questions?
