



# Oregon State Police

**Senate Veterans, Emergency Management, Federal and World Affairs  
Committee**

Casey Coddling, Superintendent  
Josh Brooks, Deputy Superintendent



# Mission & Emergency Response Role

*The Oregon State Police will be a leader in delivering high -quality services that support and enhance public safety in the 21<sup>st</sup> Century.*

## Mission

- To serve all people with a priority of safeguarding life, property, and natural resources by building upon a diverse, professional, and trustworthy workforce.

## Emergency Response Role

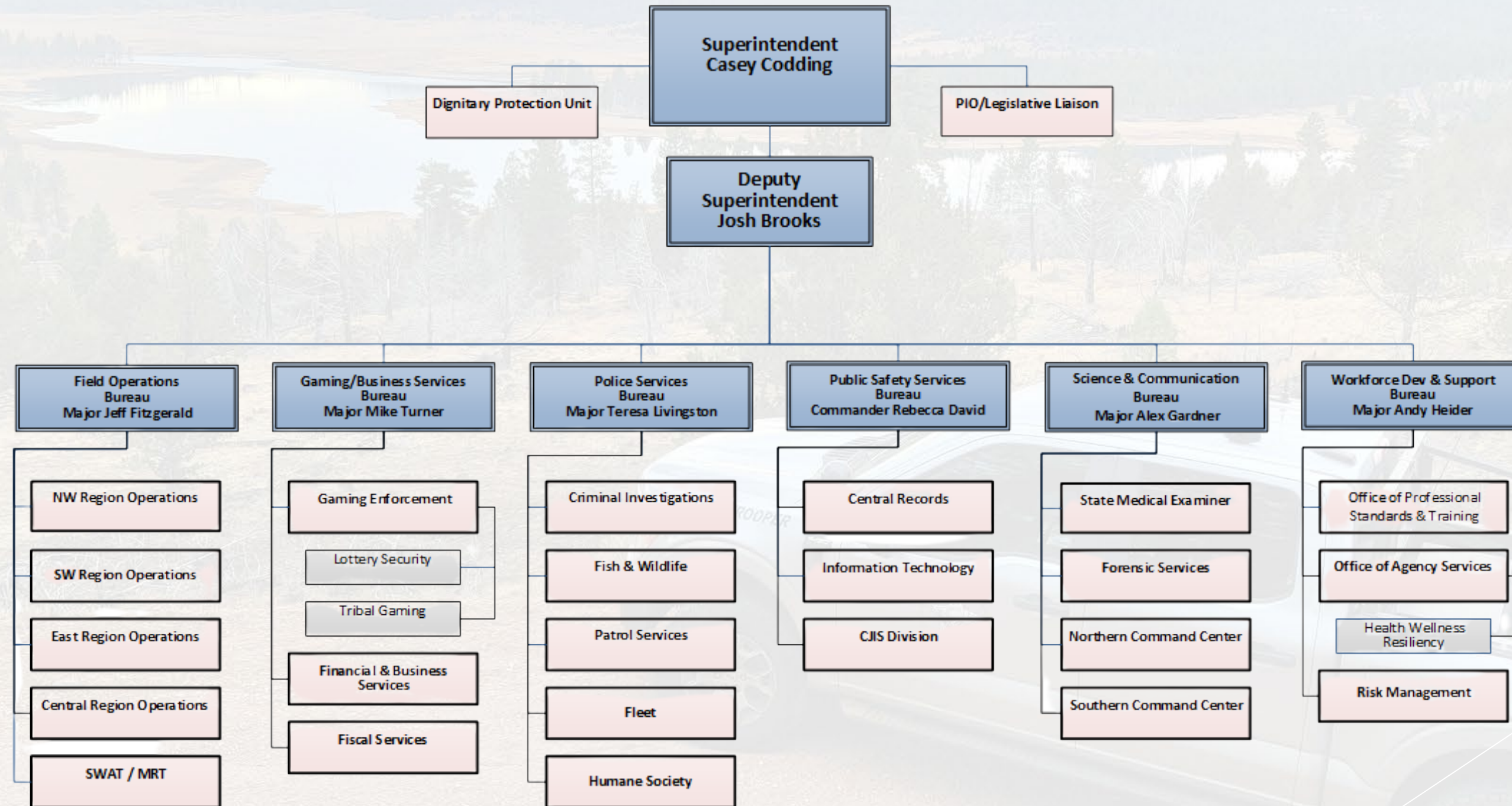
- Oregon Emergency Management (OEM)  
Emergency Coordination Center (ECC) Emergency  
Support Function 13 (ESF 13) Law Enforcement  
representative
  - Coordinate and communicate with law  
enforcement agency partners during critical  
incidents
  - All sworn members NIMS/ ICS trained
- State Interoperability Executive Council
- Oregon Homeland Security Advisory System
- Criminal Justice Information Standards Advisory  
Board
- Terrorism Intelligence Threat Assessment Network  
Fusion Center
- Portland National Security Executive Board (JTTF)







# Organization







# Staff Deployment

## Agency Personnel

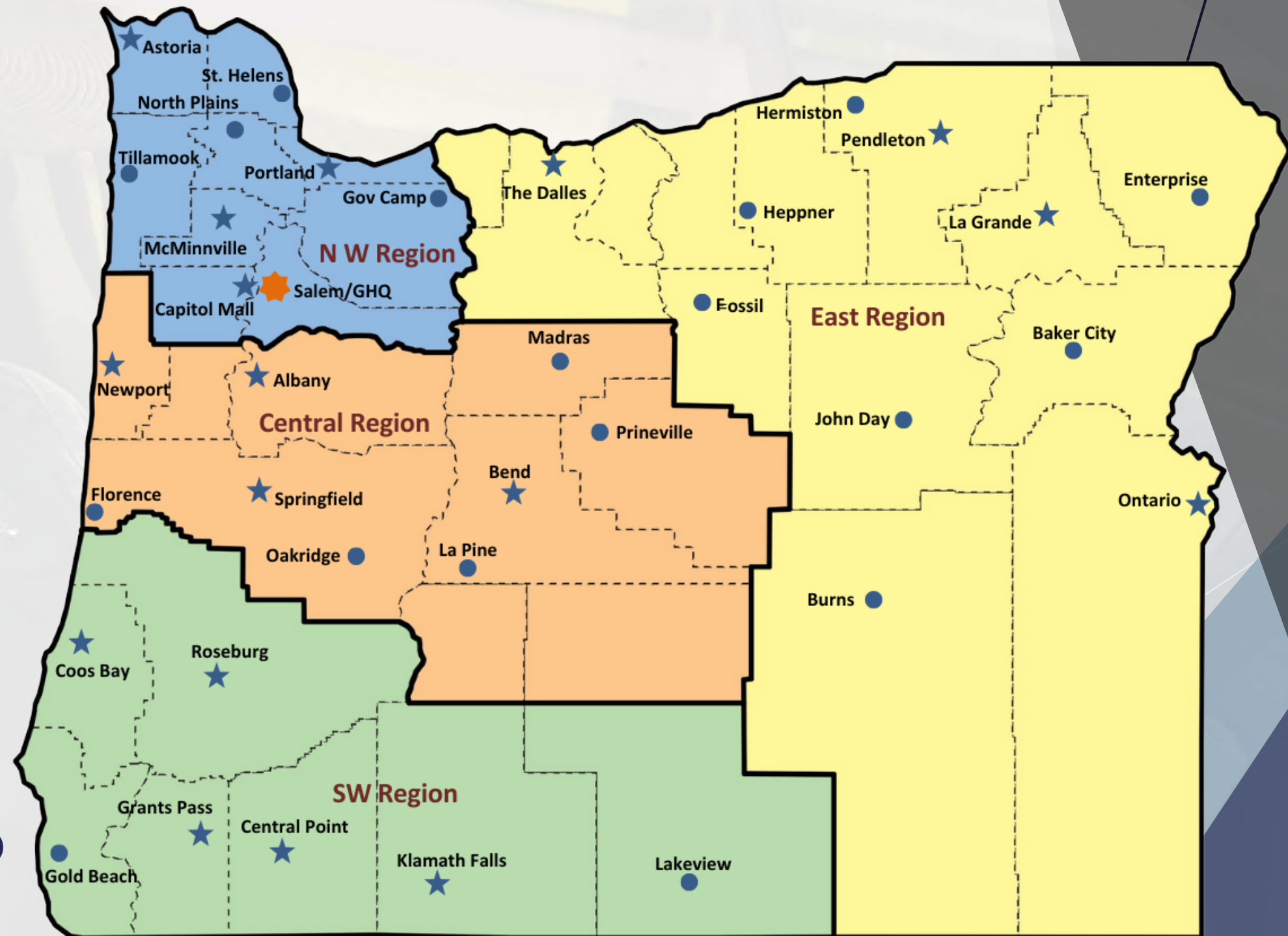
- Sworn staff: 766
  - Patrol: 478
  - Fish & Wildlife: 128
  - Criminal: 110
  - Specialty assignments: 50
- Professional staff: 627

## Patrol Offices

- 35 Patrol Offices
  - 17 Area Commands
  - 18 supporting Worksites

## Specialty Units

- Personnel and equipment stationed statewide
  - SWAT
  - Collision Reconstruction
  - K-9 team
  - Mobile Response Team
  - State Overdose Response Team (SORT)
  - Counter Terrorism Section
  - Drug Enforcement Section





# Command Centers (Dispatch)

## Two regional Command Centers (Dispatch)

- Northern Command Center: Salem
- Southern Command Center: Central Point

## Fully redundant operations

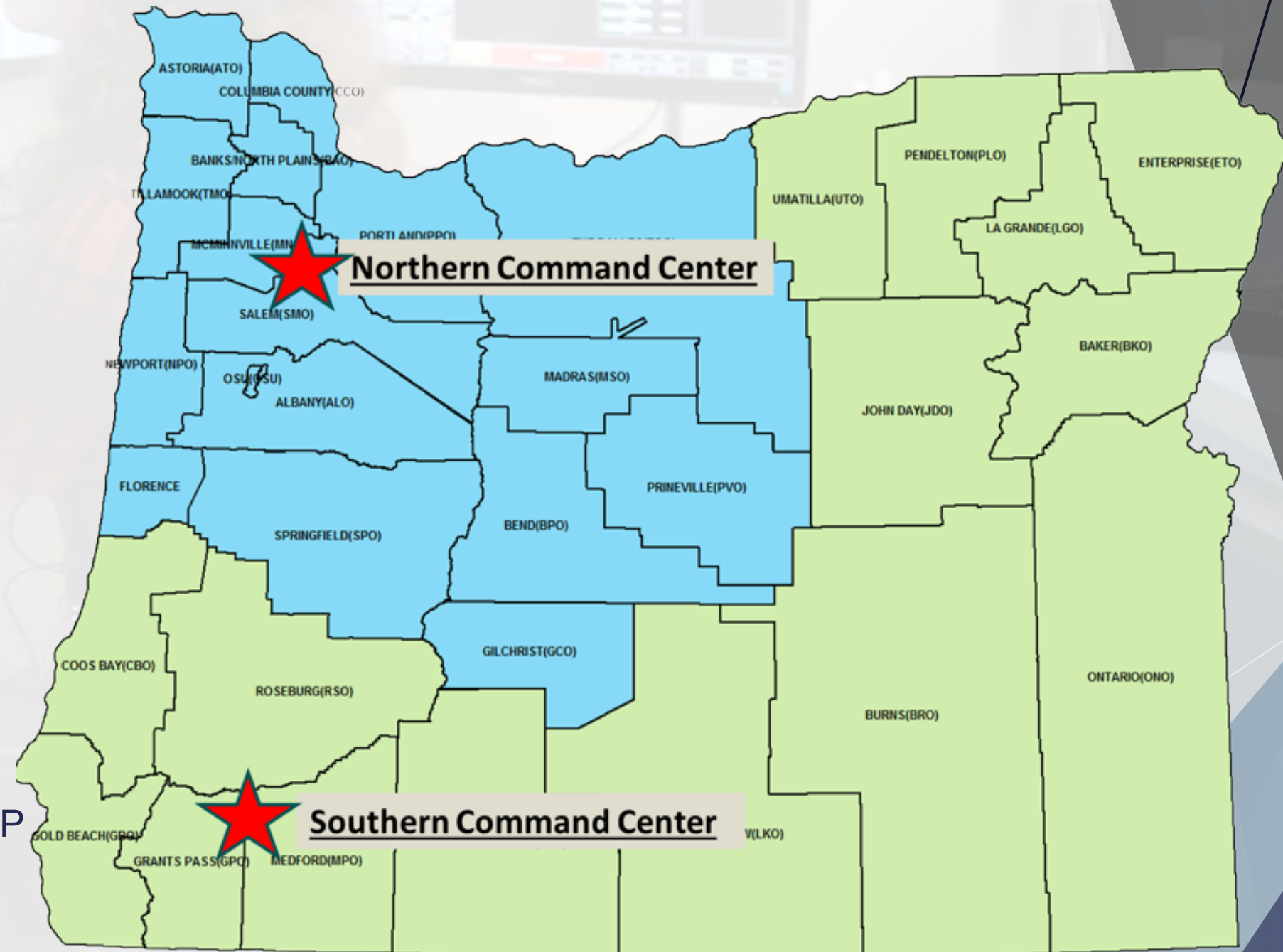
- Regularly exercise transferring operations between dispatch centers

## Secondary Public Safety Answering Points (PSAP)

- Do not directly receive 911 calls
- Oregon PSAPs (911 centers): 41
- Operational 24/7/365

## Statewide Communication

- City/county law enforcement access to OSP radios in each patrol office area







# Emergency Resources

## Agency Operations Center (AOC)

- Ability to monitor/manage critical incident/regional event responses statewide from OSP General Headquarters
- Two fully functional dispatch consoles and Computer Aided Dispatch (CAD) stations
- Two OSP radio base stations
  - Direct communication and incident command from General Headquarters
- Auxiliary radio equipment (similar to HAM Radio)
  - Direct communication with OEM and county emergency management offices
- Starlink internet
- Generator backup
  - CAD, network, and communication redundancy

## Satellite communications for command staff

- Ability to communicate with regional supervisors if other communication channels are unavailable

## Major Incident Command Group

- Command staff Microsoft Teams channel to quickly disseminate emergency information statewide





# Emergency Resources

## Statewide emergency response every day

- Scalable response
  - Local area command, regional, and statewide resources
- Watercraft, aircraft, and off-road vehicles
- Ongoing collaboration with local agencies (cities and counties)
- Support of local emergency orders
  - Regularly deployed throughout state to enhance local operations
- Basic road clearing as needed

## OSP resources/local agency support

- Statewide law enforcement functions
  - Personnel
    - Patrol, Fish & Wildlife, and Criminal Division troopers deployed throughout state
    - Sworn staff 3-day “Go Bag”
- Notification/evacuation assistance
- Criminal investigations
- Mass casualty incidents
  - Medical Examiners (mobile morgue, refrigerated trailers)







# Example: Tsunami Warning

## December 5, 2024, Tsunami Warning

|          |  |
|----------|--|
| 10:54 AM | Tsunami Warning received: 7.0 magnitude earthquake off California coast line; 45 miles SW of Eureka, CA  |
| 10:55 AM | Area Commander notified  |
| 10:56 AM | Dispatch broadcast to Gold Beach and Coos Bay patrol offices <ul style="list-style-type: none"><li>• All available patrol, Fish &amp; Wildlife, and detectives deployed</li></ul>  |
| 11:02 AM | GHQ AOC activated and all command alert issued   |
| 11:16 AM | Major Incident Command Group activated and sharing real time information   |
| 11:21 AM | OSP Area Commander reports to local Incident Command Center <ul style="list-style-type: none"><li>• Pre-positioning of OSP watercraft, aircraft, off-road vehicles, and additional personnel<ul style="list-style-type: none"><li>◦ Grants Pass, Medford, Roseburg patrol, Fish &amp; Wildlife, and criminal division troopers on standby</li><li>◦ Central Region Fish &amp; Wildlife on standby</li></ul></li><li>• Responders instructed to seek higher ground as impact times near</li></ul> |
| 11:54 AM | Tsunami warning lifted   |
| 11:59 AM | Gold Beach and Coos Bay patrol offices resume normal operations  |





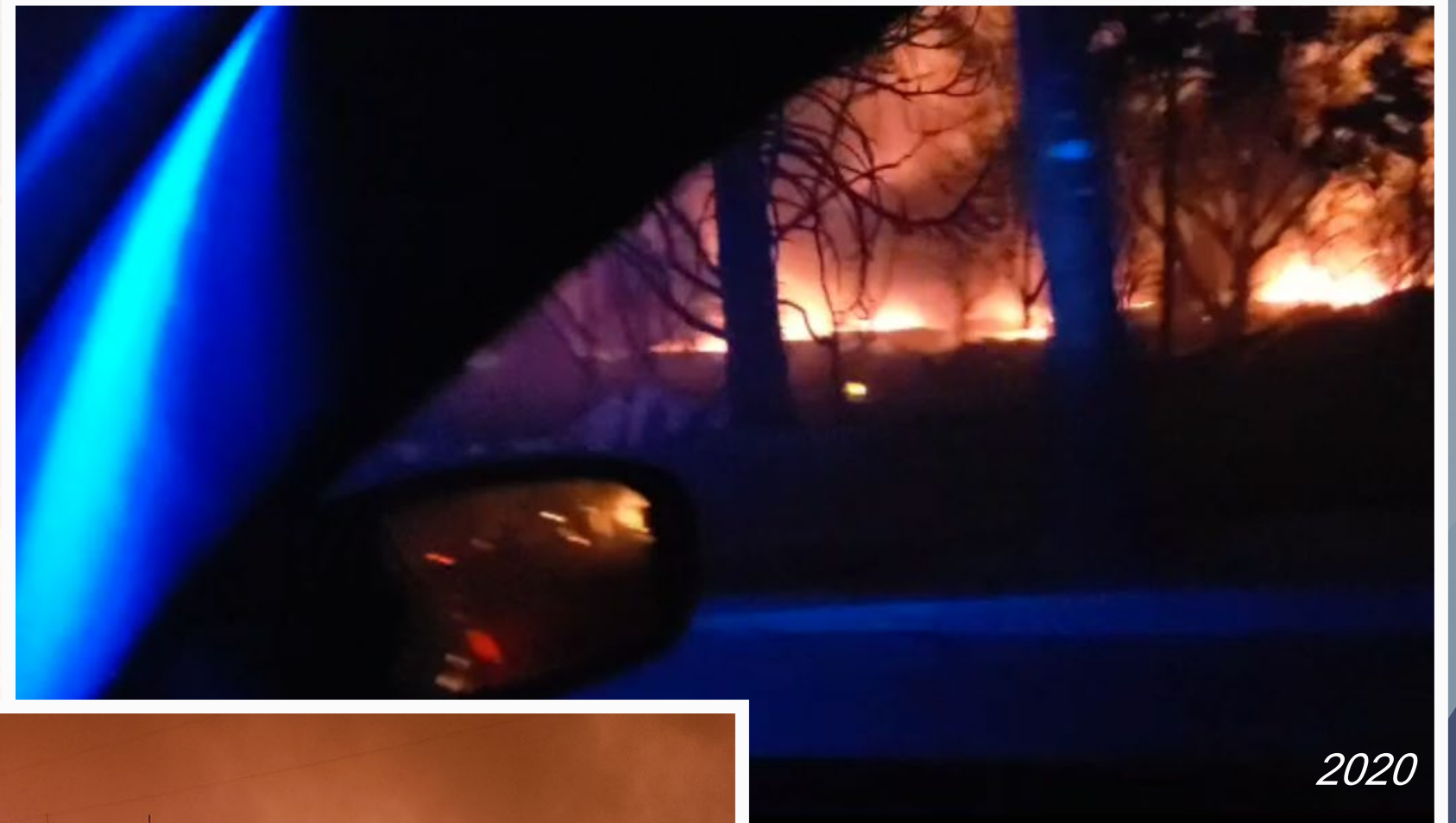
# Example: Wildfire Response

## Annual Wildfire Response

- Statewide allocation of staff and resources in support of local agencies
  - Collaboration with local, state, and federal agency partners
    - Assist with enforcement of local emergency road closures
  - Evacuation response from local patrol offices as needed
    - Supplementing local resources
  - Basic road clearing
    - Fish & Wildlife troopers with chainsaws and winches

## Post Fire Response

- Search for victims
- Criminal investigations
  - Crimes that occurred during a fire
  - Follow-up investigations
  - Arson investigations as needed



2020



2024





# Emergency Plans

## OSP Emergency Plans

- **Emergency Operations Plan (EOP)**
  - All-hazard plan
  - Outlines OSP's roles and responsibilities in an emergency response
  - Guide for responding to major emergencies and disasters
- **Continuity of Operations Plan (COOP)**
  - Works in conjunction with agency EOP to re establish critical functions following an interruption of services
  - Outlines essential functions, succession order and delegation of authority, alternate work facilities and equipment, and technology needs







# Oregon State Police

Closing Remarks/Questions