



# Row River Fire Response

Kathleen Istudor  
Sue Brown  
Walt Bernard

PRESENTED: February 20, 2024



Our community joined forces to support fire protection  
in the valley.

Row River Fire Response, a 501c3





Row River  
Community  
Wildfire Risk  
Reduction  
Project

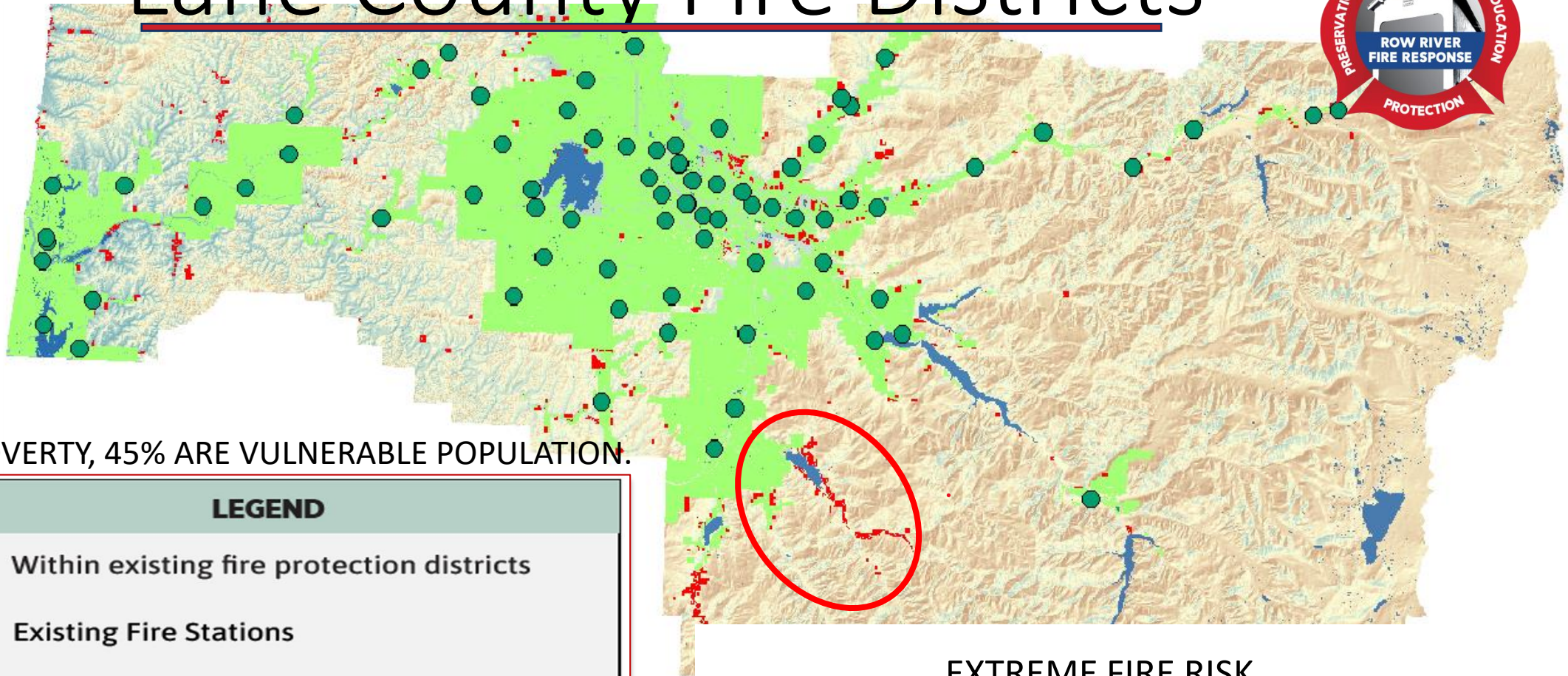


# Community Engagement - OSFM



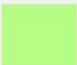





# Lane County Fire Districts



50% POVERTY, 45% ARE VULNERABLE POPULATION.

## LEGEND

-  Within existing fire protection districts
-  Existing Fire Stations
-  Lakes
-  A) less than 200 acres,  
B) greater than \$10,000 improvement/  
structure value,  
C) outside fire protection districts

EXTREME FIRE RISK

DEAD-ENDS INTO UMPQUA NATIONAL FOREST

SOUTH FORK WATERSHED IMPACTING:

2.5MM PEOPLE, 65% OREGON POPULATION



# 2023 LEGISLATURE



Rising temperatures and prolonged droughts in Oregon are impacting forests, leading to longer and more intense fire seasons. Oregon's forests cover over 30.5 million acres, nearly half of the state's land.

11 NATIONAL FORESTS

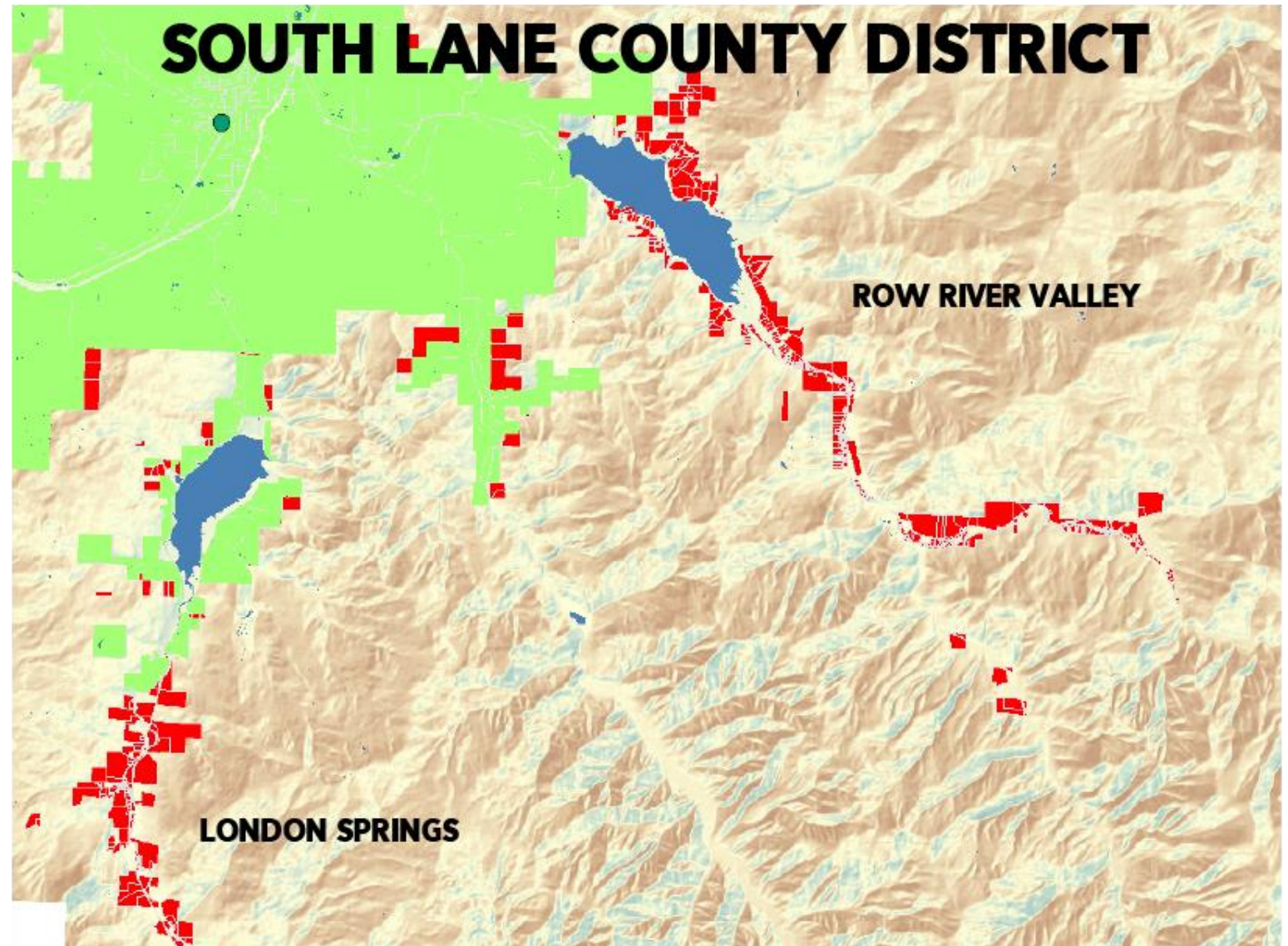
24 WILDERNESS AREAS

10 BLM DISTRICTS



## LEGEND

- Within existing fire protection districts
- Existing Fire Stations
- Lakes
- A) less than 200 acres,  
B) greater than \$10,000 improvement/  
structure value,  
C) outside fire protection districts



Unprotected areas are a burden and do not benefit anyone.  
- Chief Wooten 11/23



# SOUTH LANE COUNTY FIRE & RESCUE



CHIEF WOOTEN (approved by SLCFR Board of Directors)



CHIEF WOOTEN

The RRFR has effectively tackled the challenge, paving the way for a replicable model in fire protection. This success includes:

- Formation of a partnership with a neighboring professional fire district as a transitional auxiliary unit, ensuring a legal fire division, acquiring insurance, training, mentorship, administrative support and equipment.
- Achievement of local firefighting service with 20 active firefighters within four months,
- Establishment of three Emergency Medical Technician (EMT) and service within six months,
- On the ballot for a fire district within one year.





Now  
(Fortunate Beneficiaries)





# HOLIDAY FARM FIRE | Sept 7<sup>th</sup>, 2020



OUR TERRAIN IS THE SAME AS MCKENZIE RIVER VALLEY

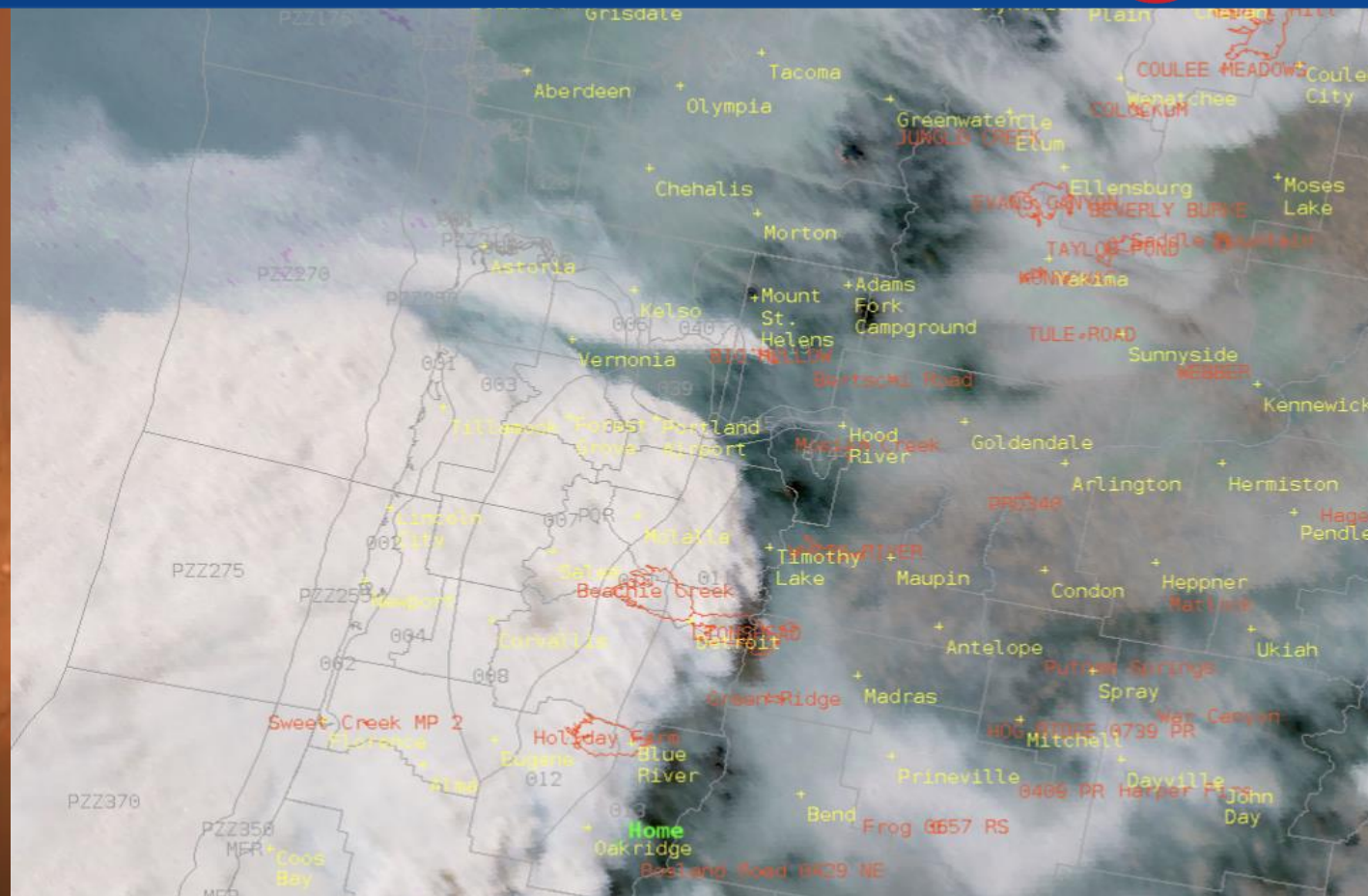
\$442.4MM MOST EXPENSIVE IN OREGON'S HISTORY

2500 Displaced

150 Homes lost

100,000 Residents without power or communication

All Western Oregon blanketed in Smoke



Unprotected areas are a burden and do not benefit anyone.

- Chief Wooten 11/23

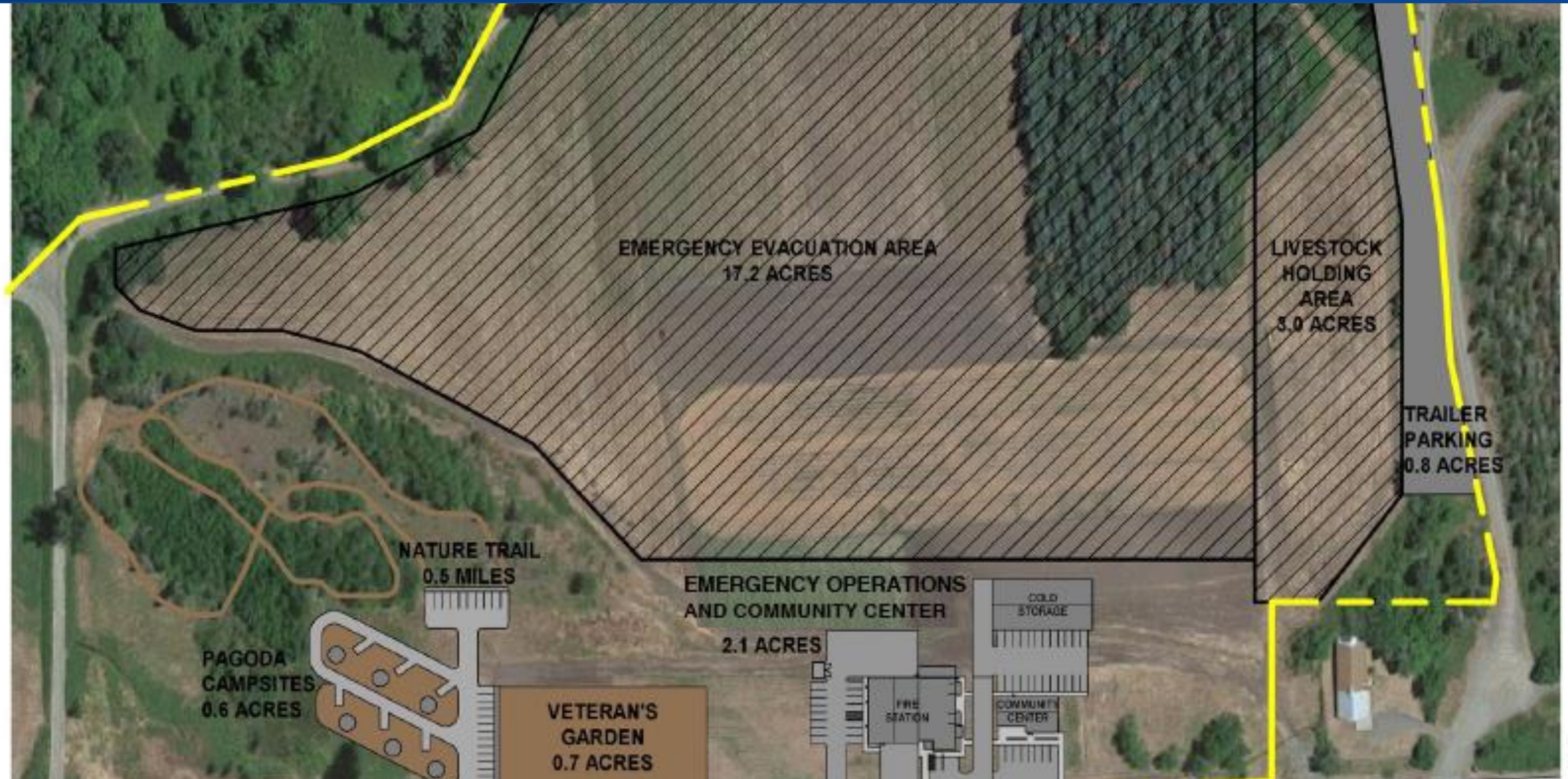




# Temporary Station and Volunteers











FLEX SPACE FOR MULTI-AGENCY USE







Site development spans approximately 72,000 square feet

ASSEMBLY POINT, SHELTER-IN-PLACE,  
EVACUATION POINT.

A 7,200 square foot temperature-controlled warehouse equipped with ADA restrooms serves as storage for fire and EMS vehicles and related equipment. |

EMERGENCY OPERATION CENTER AND MULTI-  
AGENCY COMMAND CENTER

# FLEX SPACE FOR MULTI-AGENCY USE





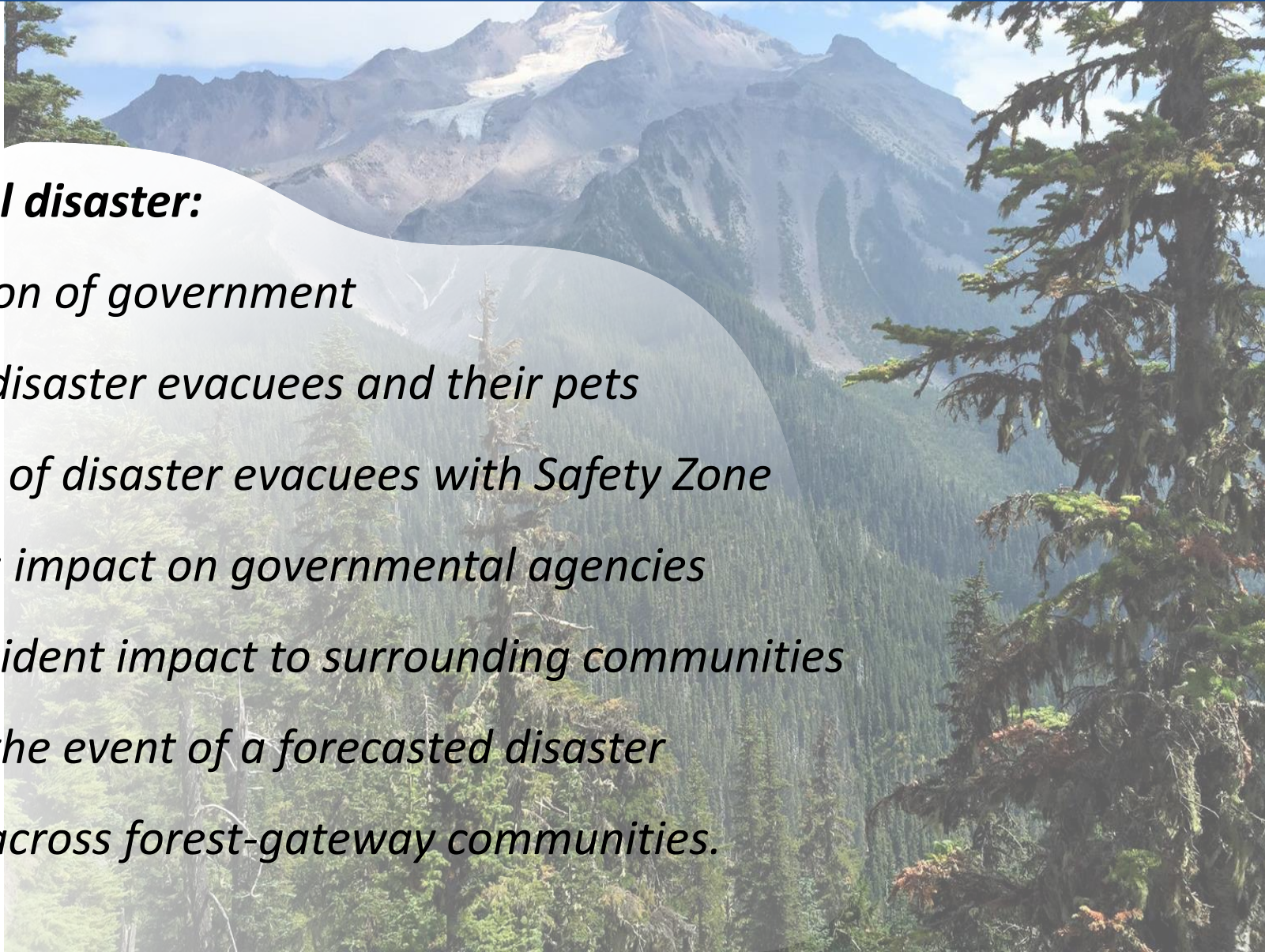
# Benefits of Multi-Use | Multi-Agency



## **REGIONAL:**

### ***In case of a local and/or regional disaster:***

- *Provide stability for continuation of government*
- *Serve as overflow for regional disaster evacuees and their pets*
- *Minimize influx/oversaturation of disaster evacuees with Safety Zone*
- *Prevent/Delay the emergency's impact on governmental agencies*
- *Preventing the spread of an incident impact to surrounding communities*
- *Serve as incident command in the event of a forecasted disaster*
- *Create a network of resiliency across forest-gateway communities.*





# Phase 1- \$3.9MM

---



We don't want any unprotected areas in Oregon

Provides:

- Fire Station
- Safety Zone
- Community Center
- Multi-Use/Multi-Agency Emergency Center
- Saves Lives and Property
- Protects our National Forests
- Protect the Watershed
- Strengthen Local Economy
- Legacy of History and Hope



Unprotected areas are a burden and do not benefit anyone.

- Chief Wooten 11/23