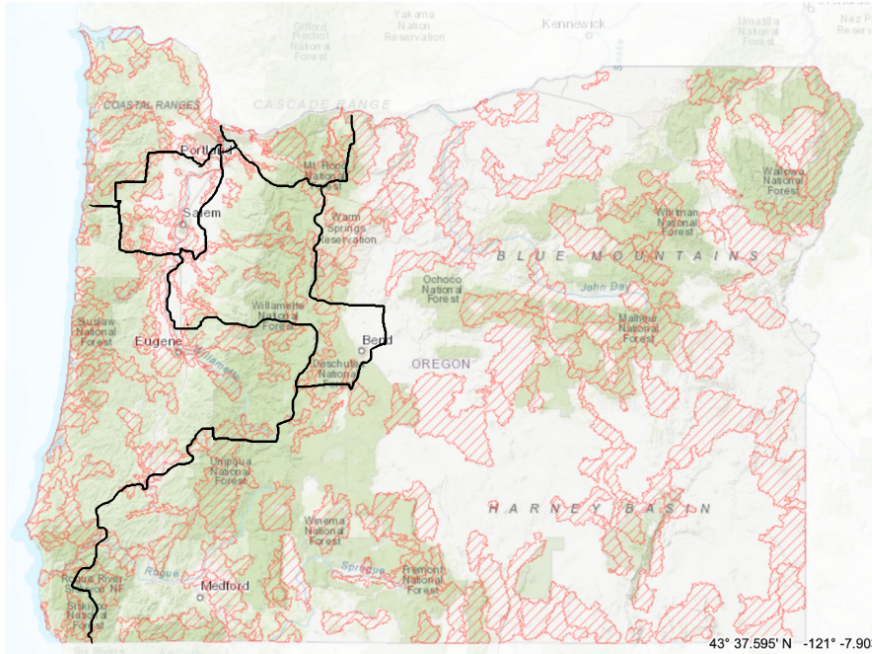


HB 3086 - ODFW Commission Restructure

River Basin Management Areas are the right choice for ODFW Commission & wildlife management.

Wildlife populations, challenges, and opportunities vary by region.

Conservation Opportunity Areas, highlighted by the red hashmarks, are the prime example of the distribution of Oregon's fish & wildlife, their needs, and the Commission's opportunities to effect positive change. The river basin model is a more equitable and appropriate representation of these areas as shown by the distribution of acreage across the state.

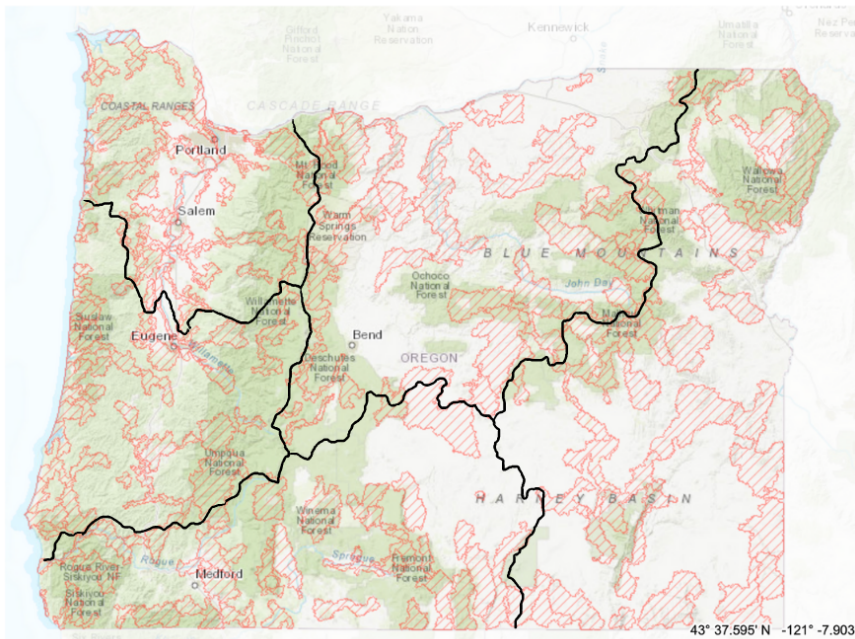


CD	COA Acreage	% of Total Acres
1	827,601	4%
2	16,392,417	77%
3	311,251	1%
4	2,686,326	13%
5	736,134	3%
6	401,445	2%

Conservation Opportunity Areas (COAs) are places where broad fish and wildlife conservation goals would best be met. Focusing investments in these prioritized areas can increase the likelihood of long-term success, maximize effectiveness over larger landscapes, improve funding efficiency, and promote cooperative efforts across ownership boundaries.

-Oregon Department of Fish & Wildlife website

Conservation Opportunity Areas - Congressional Districts

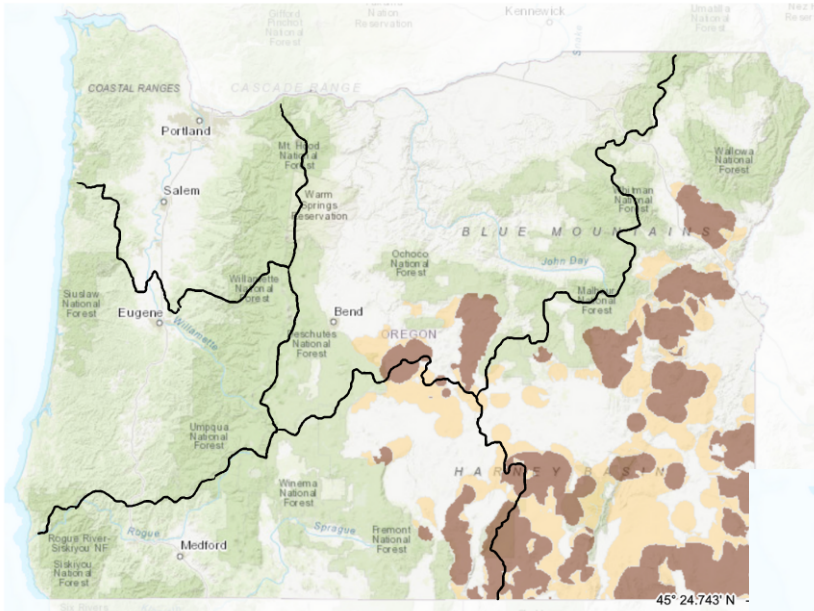


River Basin	COA Acreage	% of Total Acres
Eastern	6,841,015	32%
North Central	4,936,963	23%
North West	2,098,572	10%
South West	4,452,858	21%
West Central	2,965,860	14%

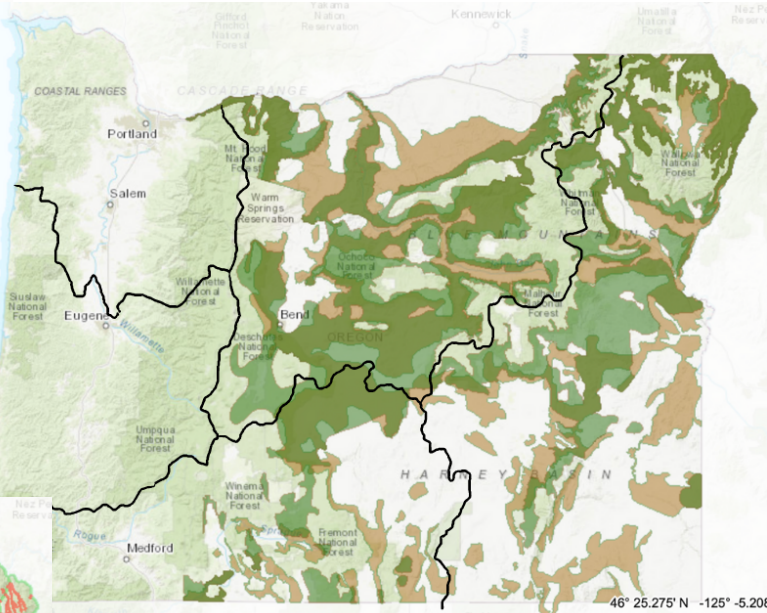
Conservation Opportunity Areas - River Basins

Wildlife diversity links directly to geographic diversity.

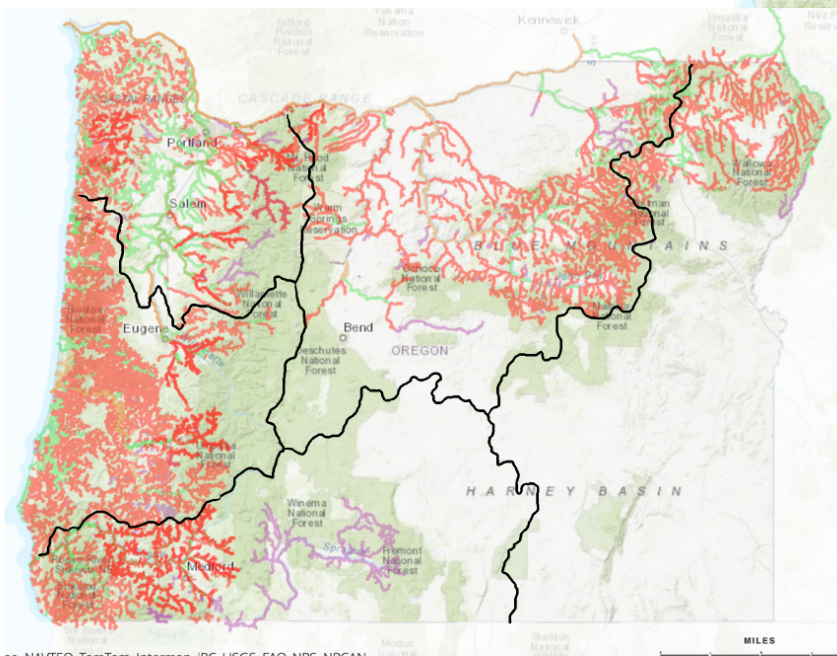
Critical conservation species and habitat are found in all corners of the state, not clustered within areas of human population demographics such as the congressional districts. Geographic diversity is imperative for the ODFW Commission to make the best informed decisions for the betterment of fish, wildlife, and habitat conservation.



Sage Grouse Core Areas

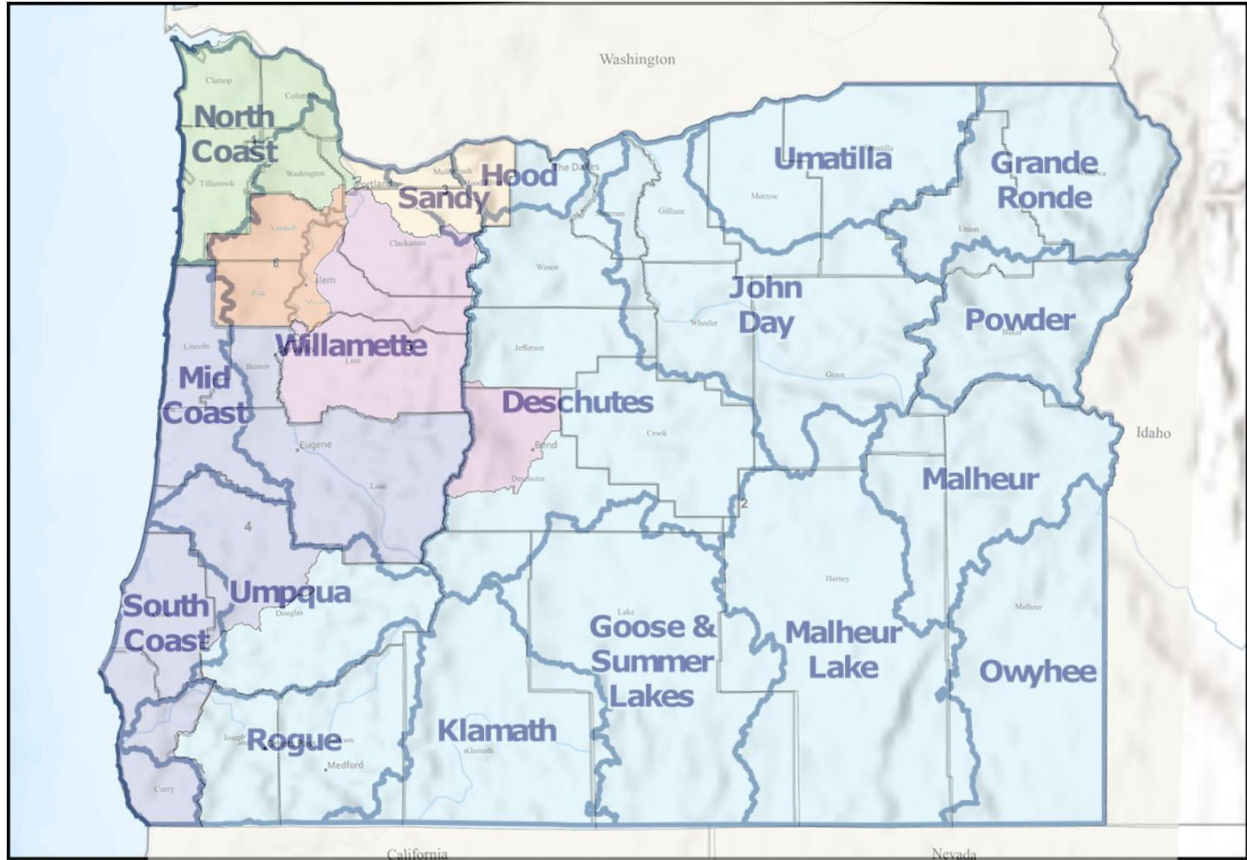


Deer & Elk Critical Winter Range



Summer & Winter Steelhead

All data taken from the Conservation Strategy information on the Oregon Department of Fish & Wildlife website.



**WEST SIDE
"AT LARGE"**
Meg Reeves

**EAST SIDE
"AT LARGE"**
Kathy Kihara

OWRC Region
 OWRD District
 County boundary

0 10 20 30 40 50 Miles

OREGON WATER RESOURCES DEPARTMENT

State of Oregon
 Water Resources Department
 723 Summer Street NE, Suite A
 Salem, Oregon 97301-1266
 (503) 986-0900
www.owrd.state.or.us

Oregon Water Resources Commission

District Representation 2021