

# Canola in the Willamette Valley

SB 789 would extend an unfair and unwarranted restriction of  
canola in the Willamette Valley indefinitely





# History of Canola in the Willamette Valley



- 1990-93 ODA adopts rules for *Brassica* crop pinning maps in Marion and Linn Counties regulated by OSU to keep food grade and oil grade canola separate.
- 2012 ODA adopts temporary rules permitting limited canola in the Willamette Valley periphery.
- 2013 HB 2427 limits canola in the Willamette Valley to 500 acres annually for OSU research on *brassica* cross-pollination, pests, and disease.
- 2015 HB 3382 extends the 500-acre canola limit and changes the purpose from research to commercial.
- 2019 SB 885 extends the 500-acre limit with a sunset in 2023.
- 2023 SB 789, if passed, would extend the 500-acre limit indefinitely.

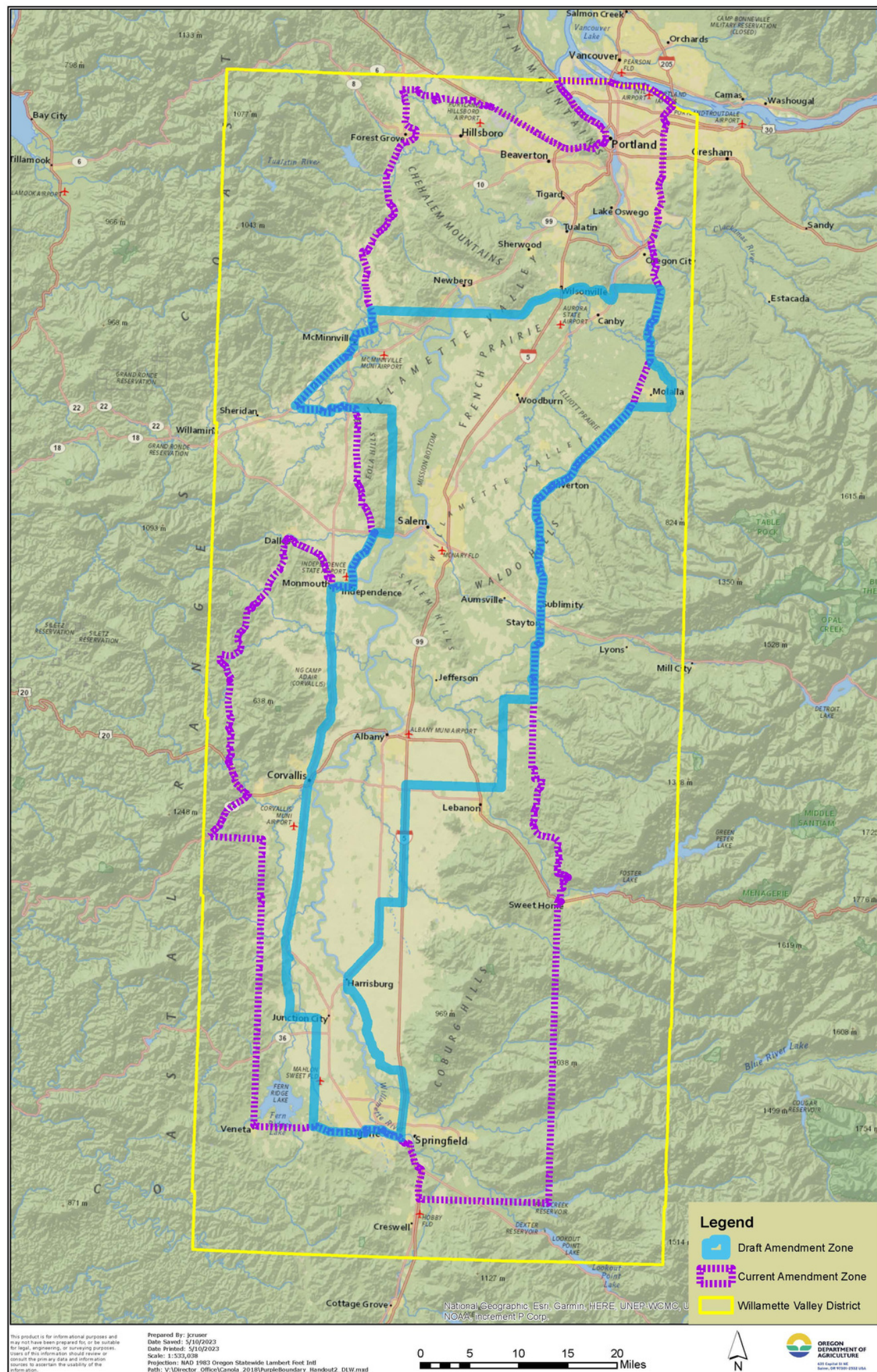


# Willamette Valley Protected District Option rejected by WVSSA in the 2018-19 RAC:

Blue outlined area 880,805 acres – Canola would only be allowed under the current WVSSA structure and pinning map system. If a grower wished to plant canola within those boundaries, they would need to join WVSSA, pin on the WVSSA map, and abide by WVSSA by-laws. WVSSA would approve or deny the acres as they currently do with other specialty seed crops under their bylaws.

Purple outlined area 1,961,392 acres - All Brassica Seed production would be publicly managed. Growing rules and a pinning map would be developed using the administrative rules making process. The management of the system would be determined by ODA and/or OSU. All brassica seed production, including canola, would be managed/ permitted equitably by a public entity.

Yellow box 3,690,145 acres - is the existing Willamette valley Protected District.





# Cover Crop Mixtures- Fall 2021

Delivered prices on 4 pallets or more \* Prices subject to Change  
Non GMO Seed!



## **All Purpose Cover Crop Mix 100-120 lbs/acre**

40% Winter Peas **\$0.56/lb**  
30% CCT Triticale  
20% Walken Oats  
10% Crimson Clover

## **Gardenway PLUS Incinerator 80-100 lbs/acre**

35% CCT Triticale **\$1.10/lb**  
25% Walken Oats  
20% Winter Peas  
5% Common Vetch  
4% Rape  
4% Nemagon White Mustard  
4% Fracking Radish  
2% Annual Ryegrass  
1% Crimson Clover

The use of Brassica seeds in cover crop blends for vineyard management is not regulated.

In other Oregon *brassica* control districts where canola is prohibited from growing it may be grown for cover crop, but it cannot flower. That is not the case in the Willamette Valley.

**Nemagon White Mustard 15-20 lbs/acre \$2.25/lb**

**Hays Barley 100-120 lbs/acre \$0.37/lb**

**BSG Rape 15-20 lbs/acre \$1.85/lb**

**Poco Barley (dies in frost) 80-100 lbs/acre \$0.40/lb**

**Majestic Crimson Clover 12-15 lbs/acre \$1.95/lb**

**Oats \$0.35/lb**

**\$.50/lb \*\*See Tech Sheet**

**Bailey Seed & Grain, LLC**

4570 Ridge Dr. NE Salem, OR 97301

Toll Free: (800)-407-7713 \* Phone: (503)-362-9700 \* Fax: (503)-362-1705

Email: [craig@baileyseed.com](mailto:craig@baileyseed.com) \* [Whitney@baileyseed.com](mailto:Whitney@baileyseed.com)

[www.baileyseed.com](http://www.baileyseed.com)

**BSG**  
**BAILEY**  
SEED & GRAIN LLC



# Current Example of how Co-existence works for Canola and other *Brassica*





# The Real Value of Canola

Canola starts on the farm, creating jobs, improving soil health, and reducing water usage.



Goes to a processor to separate the meal and oil, supporting additional jobs.

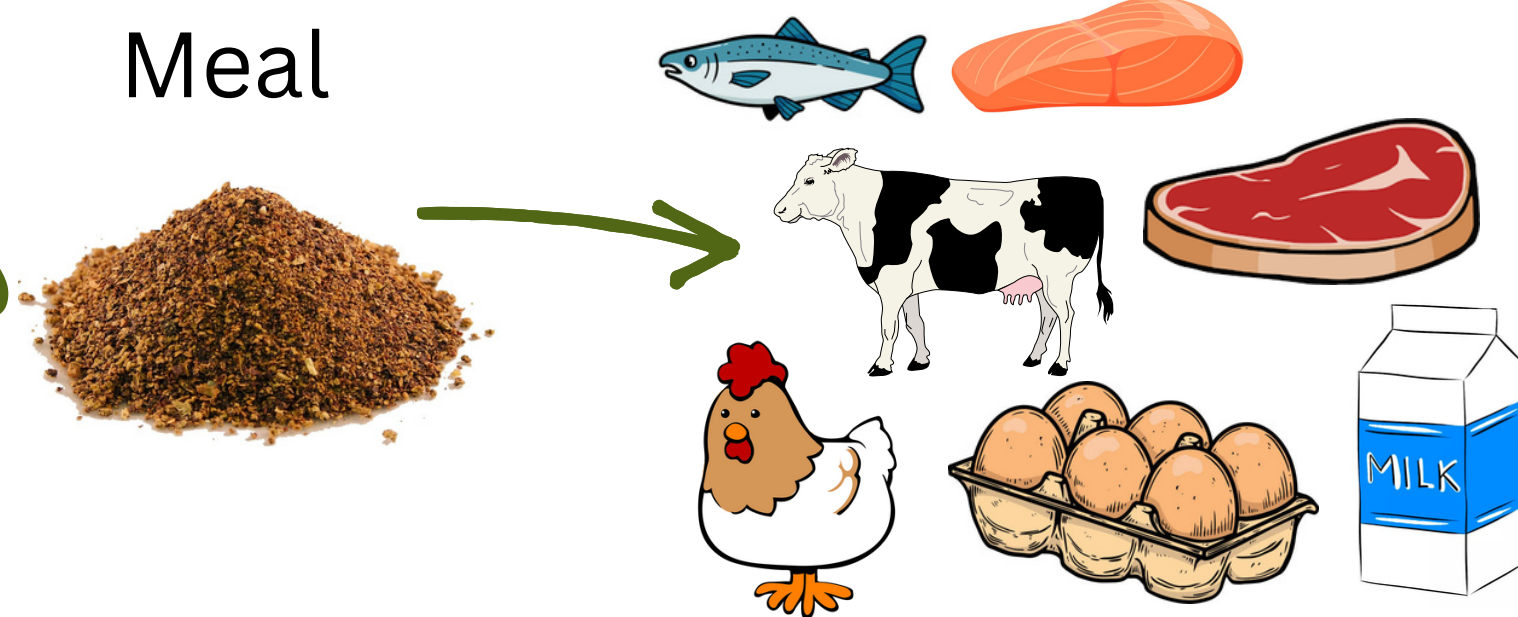


Oil

Meal



Canola Oil is an important ingredient for restaurants, commercial food products, and home cooking, as well as feed for livestock that provide a variety of meat and dairy products. It's an important crop that supports countless jobs from farm to table.





# How Canola is Permitted Currently

Farmer who wants to grow canola submits an application to ODA.

ODA gives the applications to WVSSA, a private membership organization that makes the application decision.

Approved applications are added to the mix of fields that may be permitted. Variances require some actions by the farmer to gain approval. Denied applications are removed from the process with no appeal process.

If total approved acres exceed 500 then farmers negotiate with one another to determine who pulls out or receives less acres than the amount approved.

Approved!

Denied

Variance

Once acres are negotiated to meet the 500 acre cap, permitted farmers plant canola in the fall.





**OREGON  
AGRICULTURE  
TOP 2022**

Based on 2021 data & estimates of value of production from the USDA National Agricultural Statistics Service, Oregon Department of Agriculture, Oregon State University, Oregon Wine Board, and Oregon Department of Fish & Wildlife. This is not a ranking compared to other U.S. states. More stats online: <https://oda.direct/AqStats> info@oda.oregon.gov • Created 2/2023



**Canola provides an incredible rotational crop for grass seed and wheat, and is an important cover crop for wine grapes. It is a great support for some of Oregon's most valuable agricultural products.**



# TOHOKU SEED CO., LTD.

PRODUCTION DEPARTMENT

1625 HIMURO, UTSUNOMIYA, TOCHIGI 321-3232, JAPAN

Phone: +81-28-667-4761 , Fax: +81-28-667-8776

## 2013 Testimony

“If something is not done to provide long term protection from Canola then my company and other companies will need to immediately start looking for other places to produce our seed.....” “We do not look forward to this prospect as we have very few good areas worldwide”.

MEASURE: H8.2427  
EXHIBIT: 8  
H.A.G. & NAT. RESOURCES  
DATE: 3-11-13 PAGES: 2  
SUBMITTED BY: Takashi Ishizaki

My name is Takashi Ishizaki. I am here today representing my company Tohoku Seed Company limited.

Tohoku is a vegetable breeding and sales company headquarters in Utsunomiya, Japan. We have an intensive breeding program to develop our own varieties which we sell throughout the world.

Our company was founded 65 years ago and is still family owned. We are in the top 3 vegetable seed companies in Japan. Our annual sales revenue is over 100 million US dollars per year.

We have been producing vegetable seeds in the Willamette Valley for approximately 30 years..

All of our competitors from Japan also produce significant amounts of vegetable seed here as well. The Willamette Valley is a critical production resource for the Japanese and worldwide vegetable seed trade. All major vegetable seed companies worldwide have seed production here.

Oregon's Willamette Valley is not the cheapest place to produce our brassica seeds. However, it is the best place. We get the best seed quality and reliability of production compared to anywhere else in the world. This is due to the ideal growing conditions, very enthusiastic and technical growers, and the sophistication of the seed producing companies.

The Willamette Valley commands high price for their crops but we are willing to pay that price since quality and reliability are more important than price in the vegetable seed business. It is not exaggeration to say that my company has been expanding our business to be one of top 3 companies in Japan and we could build our reputation of selling high quality seeds because of the Willamette Valley seed production.

Approximately 40% of my company's total annual turnover is from the seeds produced in the Willamette Valley. This includes brassica's, radish, spinach, and other different crops. Of our brassica seed crops, 70% of our sales depend on seed from here. As you can imagine we are highly concerned about any threat to the continued safety of seed production here.

We have been monitoring this situation with extreme concern since 2005. In 2007, I testified by telephone for a hearing with the Oregon Department of Agriculture asking that they continue to provide protection from the production of Canola. We were very satisfied and relieved that the Oregon Department of Agriculture provided full protection for the Willamette Valley seed industry with their administrative rule. We are now very distressed that this has been changed.

If something is not done to provide long term protection from Canola then my company and other companies will need to immediately start looking for other places to produce our seed, so that we are already prepared when the seed production here begins to fail. We do not look forward to this prospect as we have very few good areas worldwide.

## 2023 Testimony

“If something is not done to provide long term protection from Canola then my company and other companies will need to immediately start looking for other places to produce seeds. We do not look forward to this prospect as we have very few good areas worldwide”.



PRODUCTION DEPARTMENT  
1625 HIMURO, UTSUNOMIYA, TOCHIGI 321-3232, JAPAN  
Phone: +81-28-667-4761 , Fax: +81-28-667-8776

To whom it may concern:

My name is Takashi Ishizaki, and I am a seed production specialist for Tohoku Seed CO., LTD in Japan. Tohoku is a vegetable breeding and sales company headquarters in Tochigi, Japan. Tohoku develops non-GMO Open pollinate and hybrid vegetables and flowers for the professional farmers and home garden farmers in Japan as well as around the world.

We grow brassica seed crops around the world for risk management and genetic adaptation. Oregon's Willamette Valley is one of the few special seed production areas in the world. The combination of soil, water, good growers and favorable climate combine to create a very desirable area for specialty seed production. The Willamette Valley commands high price for their crops but we are willing to pay that price since excellent seed quality and consistent good yield under the grove climate changes. Places like the Willamette Valley are unique. Our experience in the Willamette Valley has been very positive. It is not exaggeration to say that Tohoku has been expanding our business to be one of top 3 companies in Japan and we still keep this position, and we could build our reputation of selling high quality seeds because of the Willamette Valley seed production.

We are concerned about Canola production in the Willamette Valley for disease, GMO contamination and isolation issues. Canola can and does grow in many places. That is not the case for consistent high quality vegetable seeds.

If something is not done to provide long term protection from Canola then my company and other companies will need to immediately start looking for other places to produce seeds. We do not look forward to this prospect as we have very few good areas worldwide.

For the reasons above, I do not have any positive thoughts for Canola production in Willamette Valley. I like to continue producing our seeds in this this area.

Respectfully,

石崎 隆 2023/05/08

Takashi Ishizaki  
Production Manager  
TOHOKU SEED CO.,LTD



Coexistence is possible,  
SB 789 is not coexistence



Specialty  
Brassica Field

Happy Bees

Canola  
Field