

## **BARBARA ROBERTS CAREER TECHNICAL EDUCATION CENTER: RURAL/LOW-INCOME CTE FACT SHEET**



### **UNDERSERVED: RURAL, LOW-INCOME CAREER-TECHNICAL EDUCATION**

- Small Schools average **1 CTE program**
  - Large schools average **5.6 CTE programs**
  - 58%** rural schools offer CTE programs
  - 80%** schools statewide offer CTE programs
  - Low-income schools average **2.2 CTE programs**
  - High-income schools average **3.7 CTE programs**
  - 19%** low-income students participate in CTE
  - 26%** non-low-income students in CTE programs
- \*Since 2015, CTE participation increased more in larger districts than in small districts

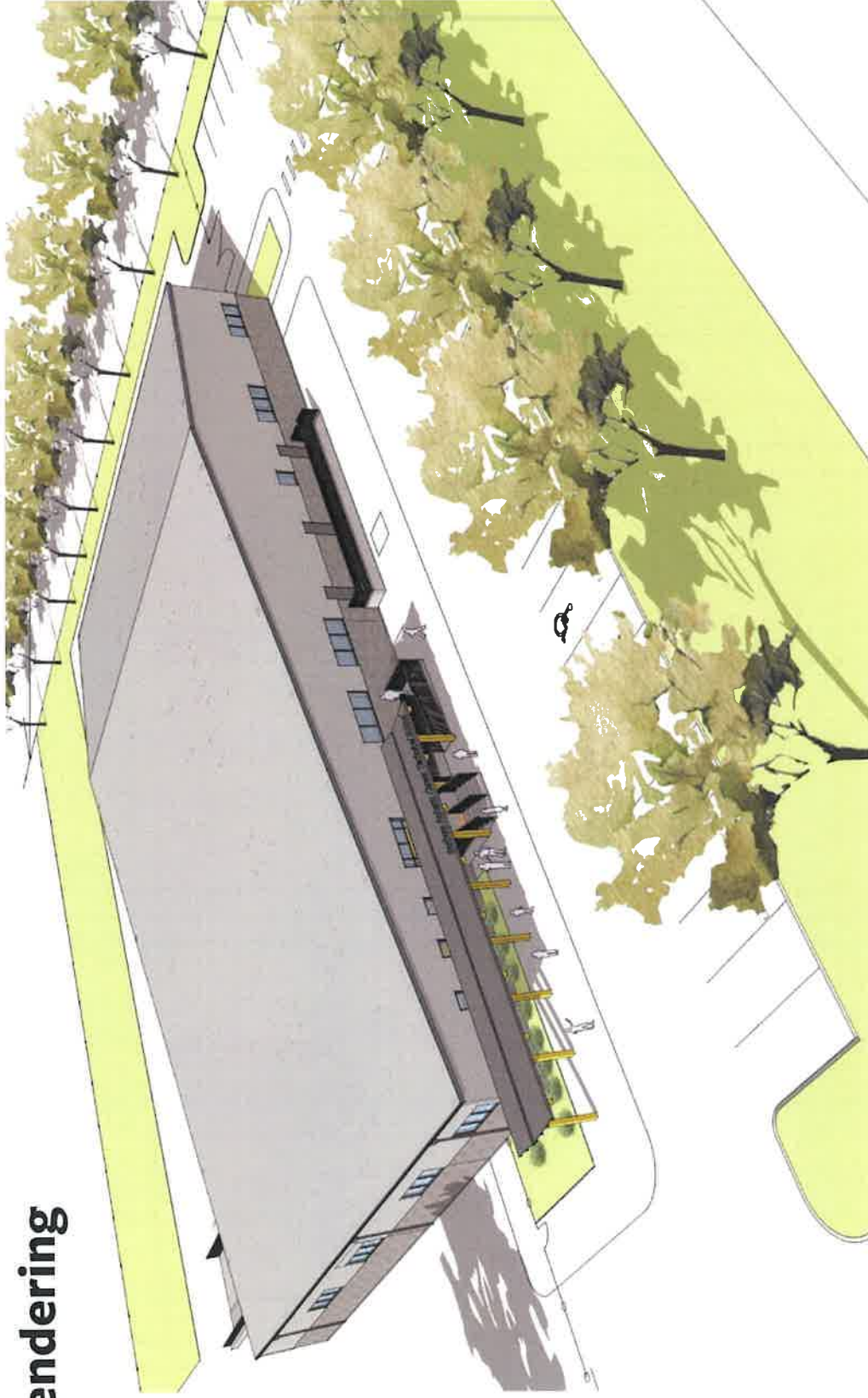
### **BENEFITS OF CAREER-TECHNICAL EDUCATION FOR STUDENTS**

- Low-income students **20% more likely to graduate**
- Salary after graduation: average **\$2,200 more per year**
- Salem-Keizer CTEC: **98%-100% graduation rates** since 2015
- 92% positive placement rate** (higher education or high-wage employment)

### **CAREER-TECHNICAL EDUCATION CENTERS MORE EFFECTIVE**

- 2% wage increase** for each additional year in CTE program concentration
- 3 or more CTE courses: 42% more likely to graduate**

# Conceptual Rendering



# Floor Plan

