
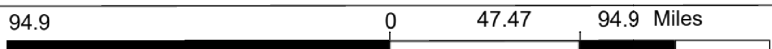


Legend

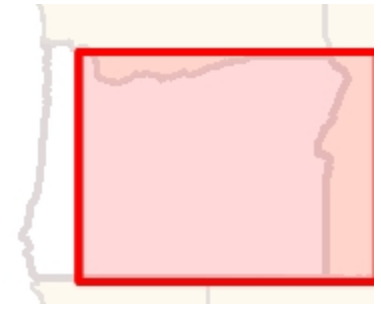
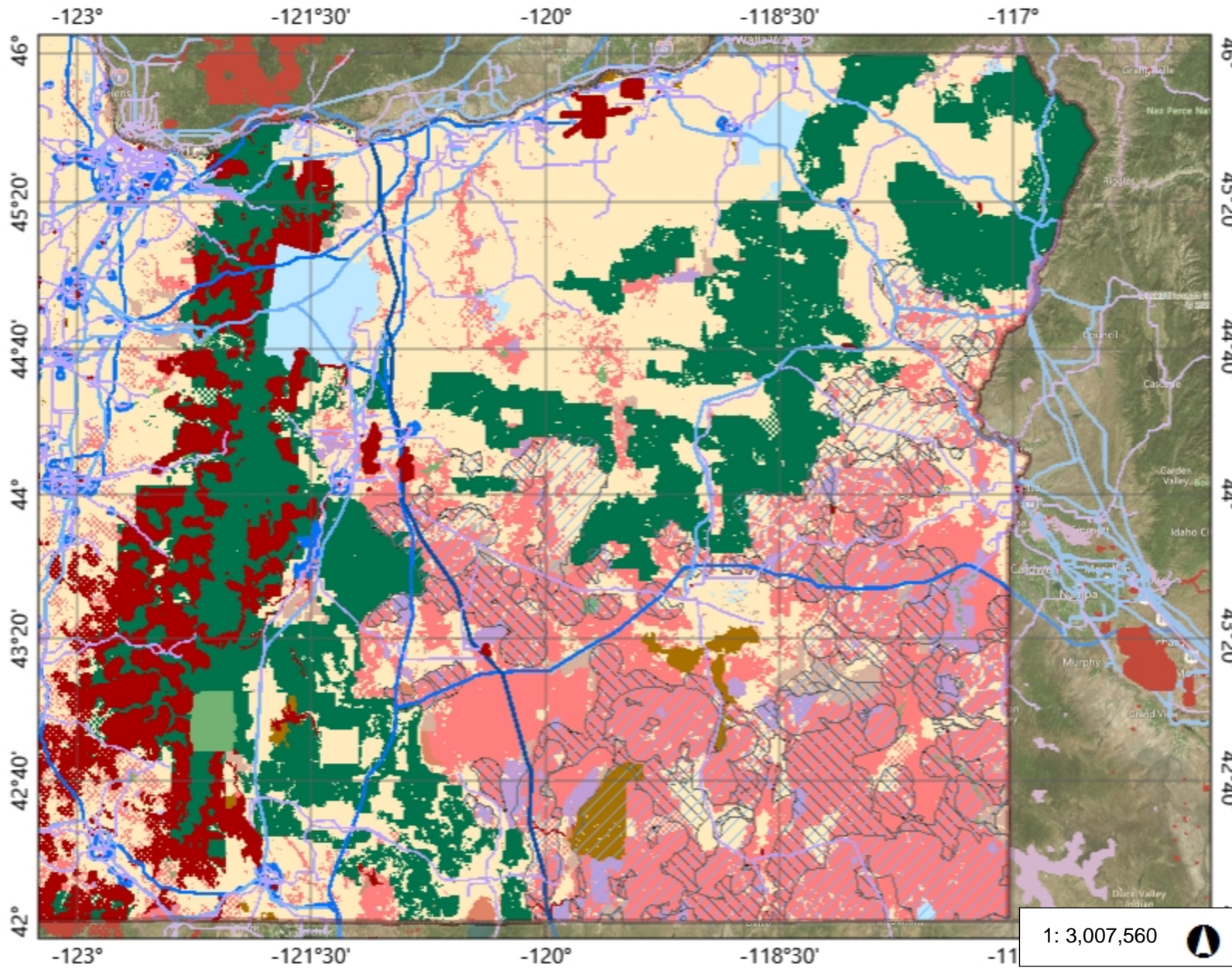
- Installations, Ranges, and Training Areas
- Transmission Lines
 - Unknown
 - 115 kV
 - 115 - 230 kV
 - 230 - 500 kV
 - ≥ 500 kV
- ▨ Local Wetland Inventory Study Areas (Statewide Wetlands Inventory)
- USFWS Critical Habitat Polygons
- Greater Sage-grouse Core Areas
- ▨ Greater Sage-grouse Low Density Habitat
- ▨ BLM Areas of Critical Environmental Concern
- Land Management
 - Private
 - Local Government
 - State Government
 - Federal (BLM)
 - Federal (USFS)
 - Federal (USFWS)
 - Federal (Other)
 - Tribal
 - Water

1: 3,007,560 



Notes

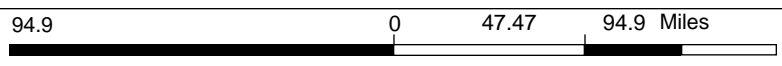
- ▨ Eastern Oregon
- Transmission Corridors (5-mile buffer around 115kV up to 230kV)
- ▨ transmission lines and 10-mile buffer around 230kV transmission lines and greater)



Legend

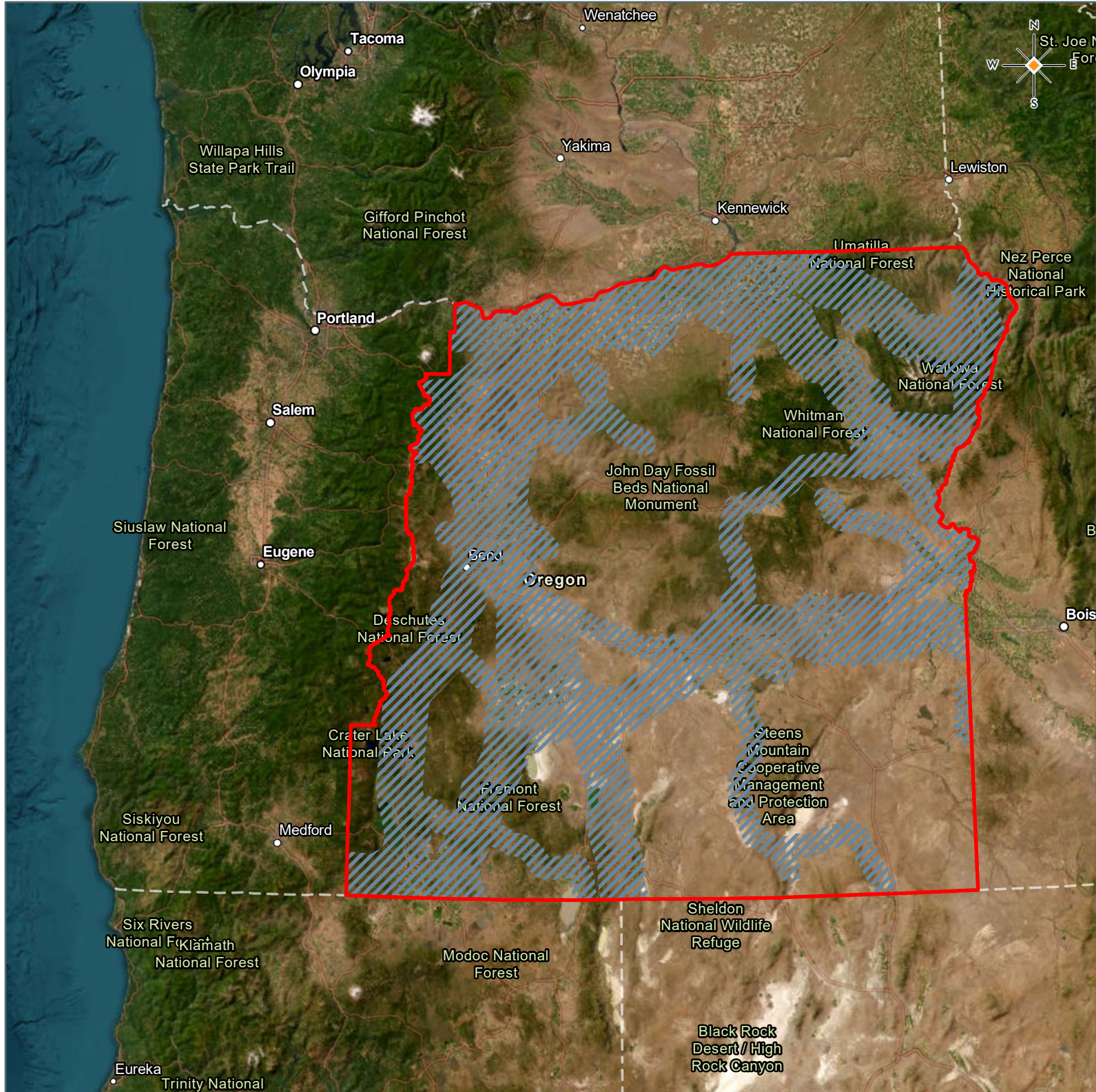
- Installations, Ranges, and Training Areas
- Transmission Lines
 - Unknown
 - 115 kV
 - 115 - 230 kV
 - 230 - 500 kV
 - >= 500 kV
- Local Wetland Inventory Study Areas (Statewide Wetlands Inventory)
- USFWS Critical Habitat Polygons
- Greater Sage-grouse Core Areas
- Greater Sage-grouse Low Density Habitat
- BLM Areas of Critical Environmental Concern
- Land Management
 - Private
 - Local Government
 - State Government
 - Federal (BLM)
 - Federal (USFS)
 - Federal (USFWS)
 - Federal (Other)
 - Tribal
 - Water

1: 3,007,560



Notes

Add your notes here



TITLE
**Eastern Oregon Map -
 Transmission Corridors**

CREATED BY
 NVS on 03/21/2023

LAYER CREDITS
 Basemap: Earthstar Geographics, County of Crook, Oregon State Parks, Esri,
 HERE, Garmin, FAO, NOAA, USGS, Bureau of Land Management, EPA, NPS
 Layers: Transmission data was acquired from EIA

LEGEND
 Eastern Oregon
 Transmission Corridors (5-mile buffer around 115kV up to 230kV transmission lines and 10-mile buffer around 230kV transmission lines and greater)