



Senate Education Committee

Ben Tate, OLDC Director

*An overview of the
Oregon Longitudinal Data
Collaborative program*

May 23, 2023

OREGON LONGITUDINAL DATA COLLABORATIVE: WHO WE ARE



The **Oregon Longitudinal Data Collaborative (OLDC)** is a cross-agency governed program located in the Higher Education Coordinating Commission. The program conducts cross-sector research *examining the impact of education programs, policies, and investments* to help individuals and communities in Oregon thrive.

The **Statewide Longitudinal Data System (SLDS)** is the data system that *matches administrative data collected* by state agencies in order to provide cross-sector, longitudinal data that can be used in research and reporting.



PROGRAM HISTORY

Key Milestones (pre-2020)

- ✓ 2015 – Chief Education Office established and SLDS identified as key program
- ✓ 2016 – Project receives funding from Legislature and contract established to build system
- ✓ 2018 – Project completed
- ✓ 2019 – OLDC Program launched

2020

Program runs with only **3 out of 9 positions filled** due to pandemic budget crisis

Incorporated new data from the National Student Clearinghouse and GED
Improved match rate with workforce to 75%

2021

Program **positions reduced** from 9 to 6 FTE

Incorporated new data from Teacher Standards and Practices Commission
Developed matched datasets for partner agency reports:

- ODE and TSPC for Educator Preparation Programs
- ODE, HECC and OED for federal reporting on K-12 CTE programs

2022

Current Status: **All 6 positions filled** and managing a portfolio of products

- Data provided for postsecondary Equity Briefs
- Data provided for ODE SB744 Report on postsecondary outcomes
- Data provided for ODE research study on 9th grade on track indicator
- 3 public reports: Education Pathway, SLDS Overview, Healthcare Shortage Study



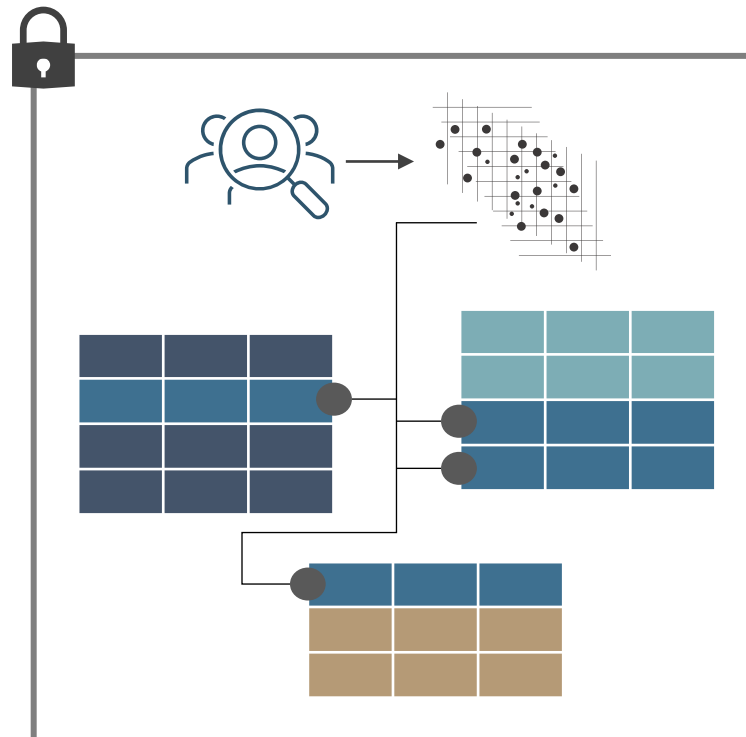
PROGRAM OVERVIEW

The goal of the OLDC is to provide actionable data-supported policy recommendations that impact student learning, training, and workforce opportunities

Data partner agencies share data with the OLDC



OLDC applies matching logic across data partner records



OLDC produces files, reports, and publishes research

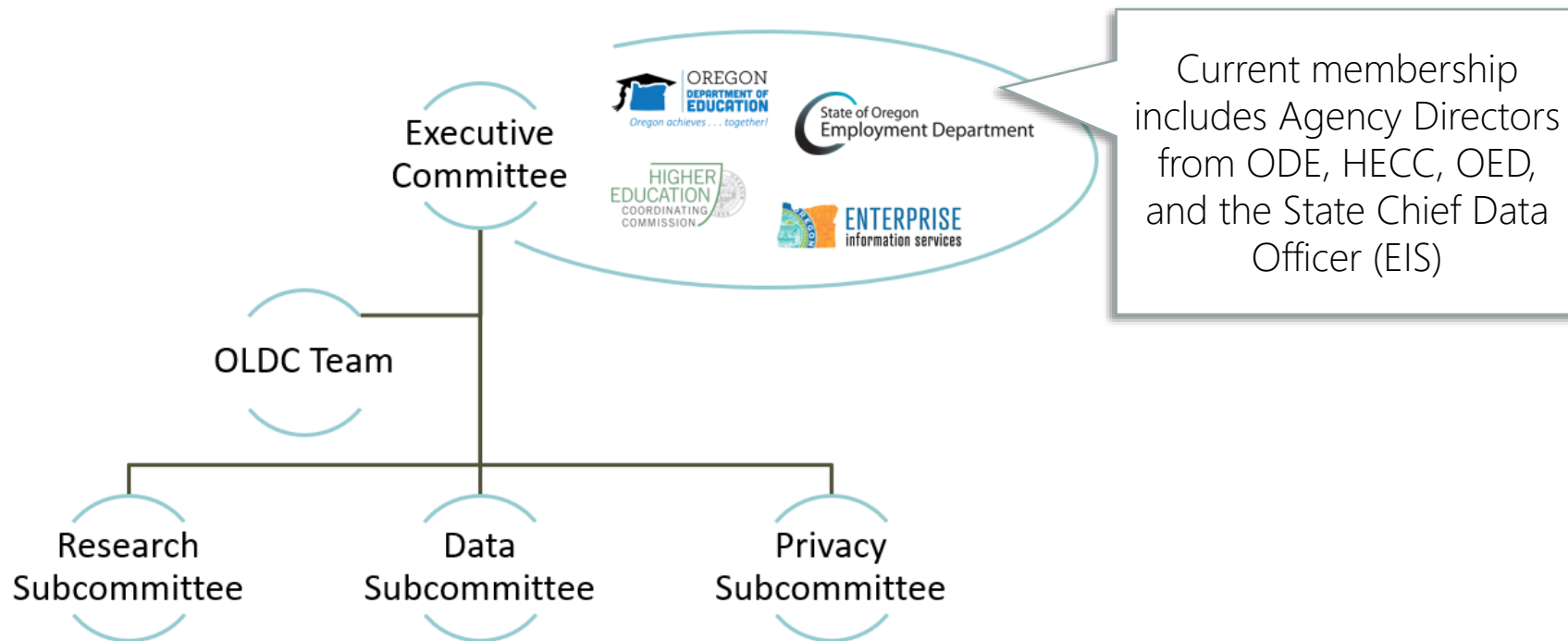


Recently published research on the nursing education shortage



PROGRAM GOVERNANCE

OLDC Governance Structure



The OLDC is administratively housed within the HECC



Illumina
Training
Pathway

Suppo

Promoti

de
of

Alignmen

establishe

Supporti

Th

ac

pr

Resear

The OLDC

Intend

Underst

of Educ

on Pros

Intend

Understan

Pov

ind

sys

stu

mo

Illuminati

a Competi

The

op

of

sup

hov

https://www.oregon.gov/highered/research/Documents/SLDS-mission%20vision%20values_2019%20poster.pdf

<https://www.oregon.gov/das/OSCIO/Pages/DataStrategy.aspx#principles>

https://www.oregon.gov/highered/research/Documents/SLDS-mission%20vision%20values_2019%20poster.pdf

<https://www.oregon.gov/das/OSCIO/Pages/DataStrategy.aspx#principles>

https://www.oregon.gov/highered/research/Documents/SLDS-mission%20vision%20values_2019%20poster.pdf



Oregon

Tina Kotek, Governor

Higher Education Coordinating Commission

Office of Research and Data

3225 25th Street SE

Salem, Oregon 97302

www.oregon.gov/HigherEd

OLDC OREGON LONGITUDINAL
DATA COLLABORATIVE

2023 Research Agenda

Introduction

The Oregon Longitudinal Data Collaborative (OLDC) provides actionable data to identify the impact of educational programs, policies, and investments to help individuals and communities in Oregon thrive.¹ This Research Agenda identifies the specific intended outcomes for 2023 and the projects that will support those outcomes. Utilizing the OLDC managed Statewide Longitudinal Data System (SLDS) to connect the K-12, Postsecondary and Workforce systems, in order to understand how these systems interact and impact each other. OLDC places a high value on integrity, transparency, and equity. We acknowledge that the projects and objectives listed here impact far more than state agency staff and as such we need to include a wider range of voices into the process. OLDC is committed to identifying and including community voice into all aspects of the research and reporting process.

Scope

This research agenda aligns with statewide, program and governance goals, objectives, and values.

Alignment to Statewide Data Goals to the statewide data goals established by the Oregon Data Strategy.²

Alignment to Governance Objectives - The intended outcomes and projects listed here must align with the scope of the OLDC program. Each outcome and project must:

- Link data from two or more data partners (K-12, Teachers, Postsecondary, Apprenticeship or Workforce)

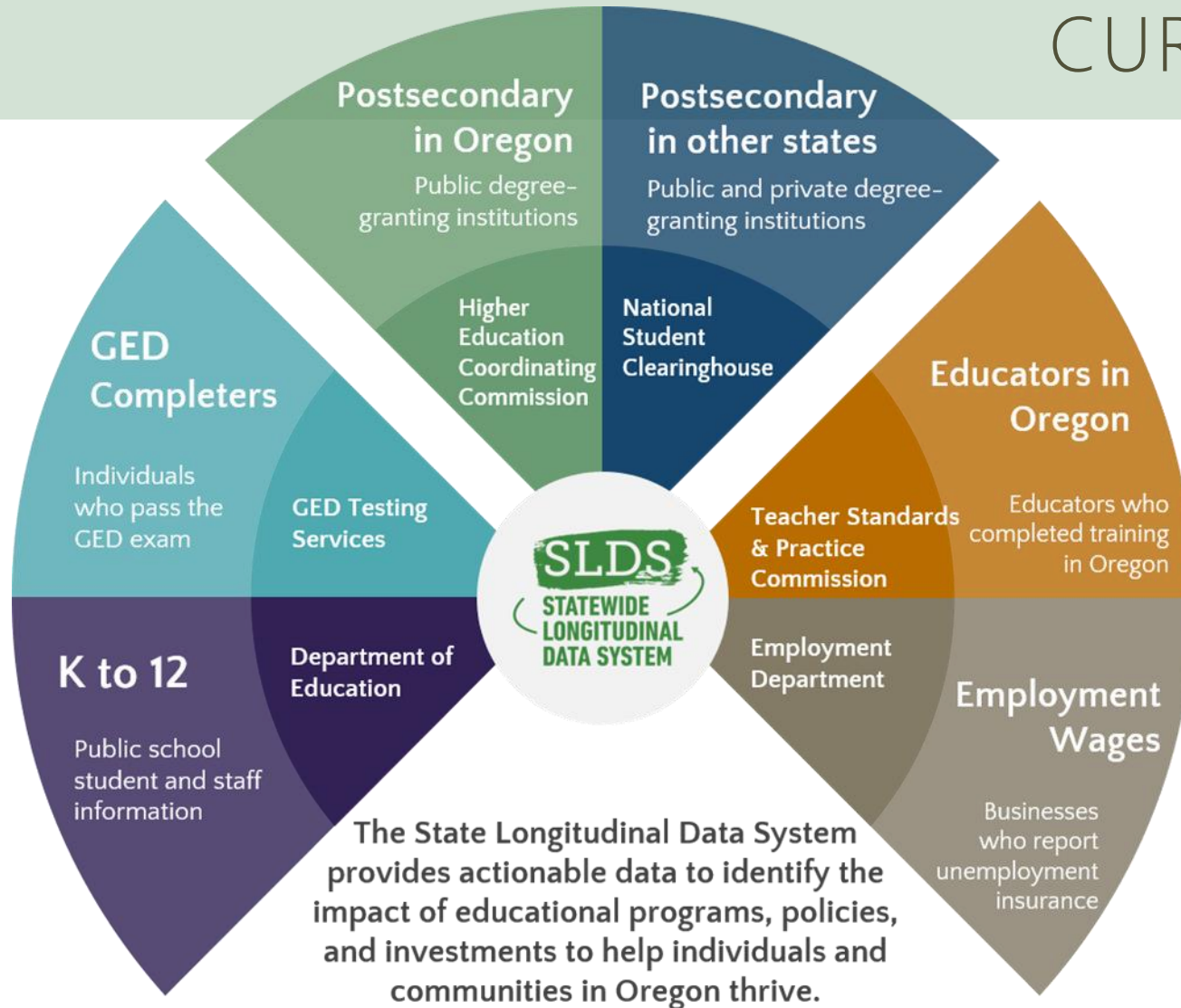
¹ https://www.oregon.gov/highered/research/Documents/SLDS-mission%20vision%20values_2019%20poster.pdf

² <https://www.oregon.gov/das/OSCIO/Pages/DataStrategy.aspx#principles>

RESEARCH AGENDA

- The agenda is developed and published annually
- Data products are approved by the Executive committee with input and recommendation from the Research and Data subcommittees as well as consultation with the Privacy subcommittee
- Ad-hoc data requests are reviewed by Research subcommittee

CURRENT DATA SOURCES



Changes since initial launch:

- **Employment Wages**, now matching 70-75%
- Added **GED Completers**
- Added **National Student Clearing House** data that provides National enrollment and degree data of Oregon K-12 students
- Added **TSPC Educator Licensure Recommendation**

Next Steps:

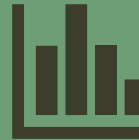
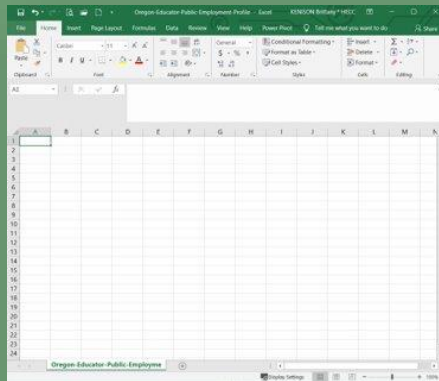
- Add BOLI Apprenticeship Data
- Add HECC Private Career School Data



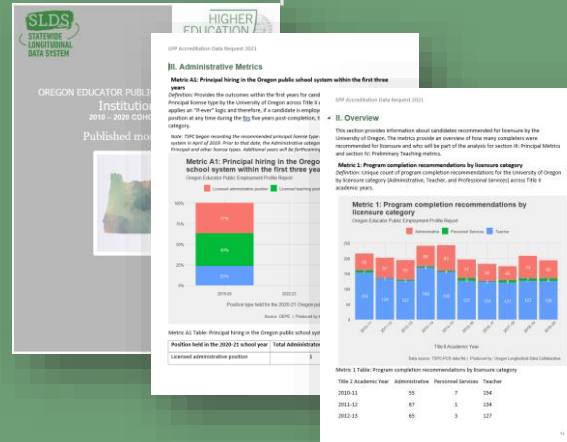
DATA PRODUCTS WE PROVIDE



Raw Data File/ Curated Data File



Derived Data Report



Research Study



2022 RESEARCH AGENDA

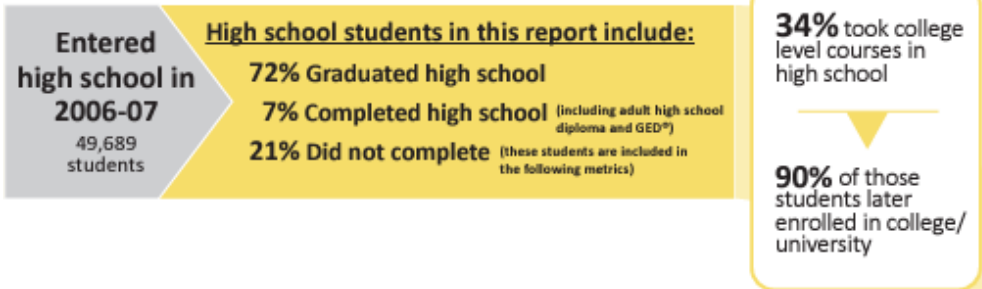
| Name | Type | Status |
|---------------------------|-------------------|----------|
| Educator Prep Program | Raw Data File | Complete |
| CTE Data File | Curated Data File | Complete |
| SB744 Data File | Raw Data File | Complete |
| HECC Equity Briefs | Raw Data File | Complete |
| ODE IES Grant | Raw Data File | Complete |
| Education Pathway | Data Report | Complete |
| SLDS Overview | Data Report | Complete |
| Educator Prep Program | Data Report | Complete |
| Healthcare Shortage Study | Research Study | Complete |



Where Are They Now? Educational Pathways in Oregon

Students in Oregon travel many different paths through the K-12, GED®, postsecondary, and employment systems. This illustration highlights the outcomes for all students who were freshmen in an Oregon public high school in 2006-07, regardless of which path they take after leaving high school. This report illuminates the many paths students take to earning educational credentials and what their wage outcomes are. All data listed reflect the enrollment and education credentials as of the end of the 2019-2020 academic year and wages earned in 2019. Future reports will investigate how this progress varies across the state and where equity gaps exist.

EXITING K-12



POSTSECONDARY



EMPLOYMENT (includes part-time wages)

| Median Wages by Educational Credential | Number in workforce | Years in workforce |
|--|---------------------|--------------------|
| Graduate | \$44,455 | 1,101 |
| Bachelor's | \$40,210 | 4,376 |
| Associate | \$32,199 | 1,860 |
| Career Certificate | \$32,467 | 513 |
| State Median Wage | \$30,747 | |
| HS Diploma | \$30,233 | 13,052 |
| HS Completer | \$24,420 | 1,674 |
| None | \$23,419 | 4,023 |

56% of K12 Cohort had an Oregon job in 2019

68% of those students had a job in 2019 and did not have a postsecondary credential

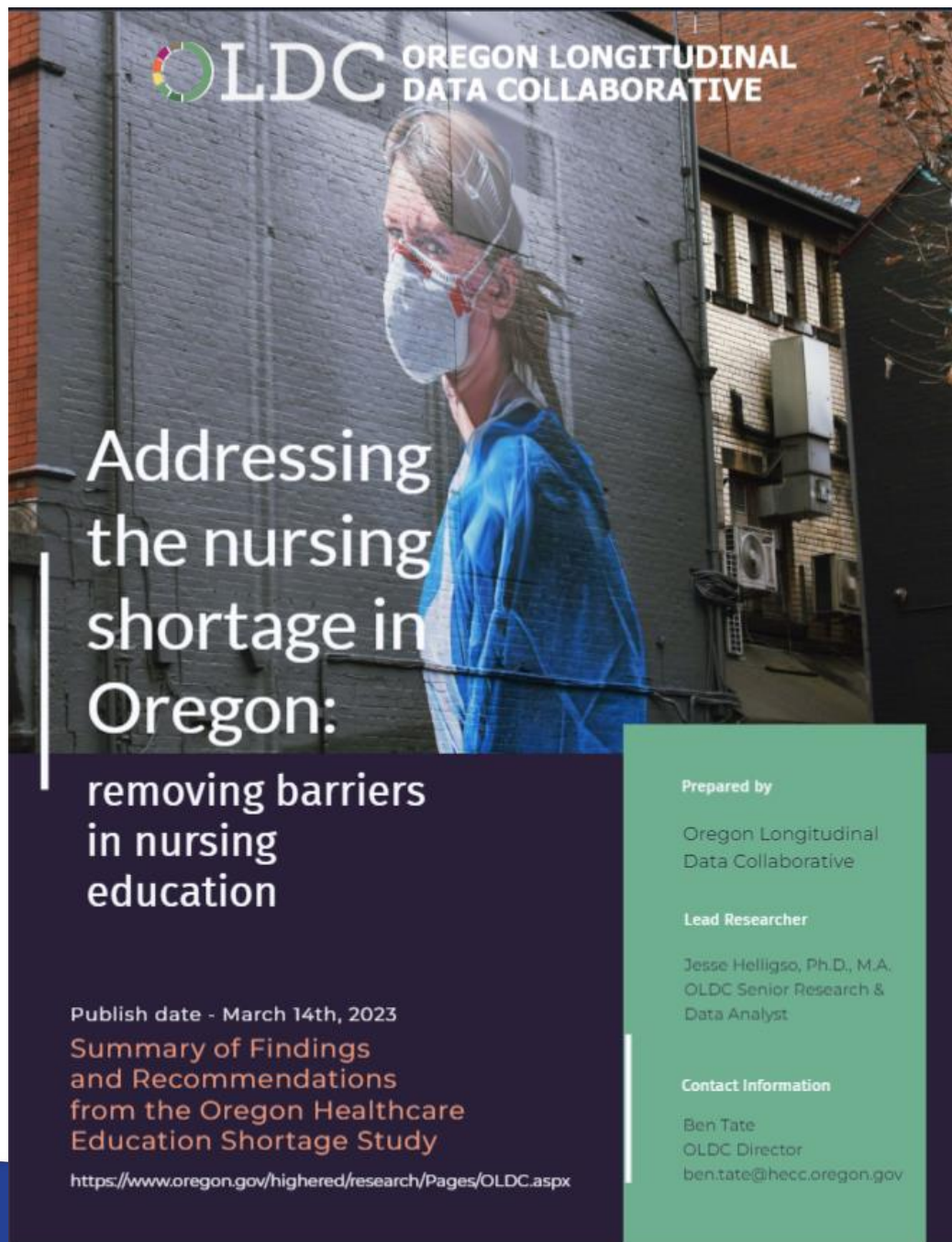
32% of those students had a job in 2019 and attained a postsecondary credential

Education Pathway Report

Infographic depicting the education pathways of students in a single K-12 graduating cohort from cradle to career, identifying key entries and achievement in postsecondary and workforce.

Beyond results, project clarified unique contribution of longitudinal metrics, which differ from agency reporting.

These next versions of this report will be interactive and allow views of outcomes by gender, race/ethnicity and rural/urban.



Healthcare Shortage Study

- Oregon ranks last in the continental U.S for number of nursing graduates per capita across public institutions.
- Plenty of qualified students apply to the nursing programs in Oregon – about 6,800, but only 23% are accepted.

This study delves into the factors causing this shortage and recommends a series of steps to address these issues.

2023 RESEARCH AGENDA: *INTENDED OUTCOMES*

1. Understanding the Impact of Educational Attainment on Prosperity
2. Illuminating Pathways between Education/Training and Labor Force to Meet the Needs of a Competitive and Dynamic Market
3. Promoting Action to Dismantle Systems of Inequity
4. Supporting Agency Reporting Needs



2023 RESEARCH AGENDA: *PROJECTS*

Underway Now:

1.) Educator Pipeline Report – A report looking at Educators from program enrollment, through graduation, licensure and employment in the public school system. These data points will be disaggregated by race/ethnicity, gender and region (rural/urban).

2.) Poverty and Economic Mobility Study – A research study looking at students in poverty and what education programs are correlated with them breaking the cycle of poverty.

Up Next:

1.) Data Refresh – SLDS Overview Report, HECC Equity Briefs, CTE Data Report, and Oregon Educator Public Employment Data.

2.) Educator Pipeline Study – Based on the data from the Educator Pipeline report, a look into where potential issues are in the pipeline that may keep people from teaching.



REQUEST PROCESS

Data Requests - Now

Currently, only accepting research requests from State Government (i.e. Executive Branch Agencies and Legislature).

Research subcommittee reviews and approves requests. Executive Committee sets priority of requests.

OLDC Researcher engages with agency SMEs to learn about how data is collected, validates, applicable policy and regulations

Data Requests - Future

Accept requests from any research or government entity (University, city, county, etc).

Research Subcommittee, and Institutional Review Board (IRB) reviews and approves requests. Executive Committee sets priority of requests.

Determine if request can be answered by existing dashboard.

OLDC Researcher engages with agency SMEs to learn about how data is collected, validates, applicable policy and regulations



Thank you!



<https://www.oregon.gov/highered/research/Pages/OLDC.aspx>