



Senate Education Committee

Ben Tate, OLDC Director

May 18, 2023

*An overview of the
Oregon Longitudinal Data
Collaborative program*

Oregon Longitudinal Data Collaborative. Who we are



The **Oregon Longitudinal Data Collaborative (OLDC)** is a cross-agency governed program located in the Higher Education Coordinating Commission. The program conducts cross-sector research *examining the impact of education programs, policies, and investments* to help individuals and communities in Oregon thrive.

The **Statewide Longitudinal Data System (SLDS)** is the data system that *matches administrative data collected* by state agencies in order to provide cross-sector, longitudinal data that can be used in research and reporting.





MISSION

The mission of the State Longitudinal Data System is to support objective analysis and reliable conclusions based on robust cross-sector*, longitudinal education data.

VISION

The State Longitudinal Data System provides actionable data to identify the impact of educational programs, policies, and investments to help individuals and communities in Oregon thrive.

* Longitudinal data from across the entire education continuum (K-12, Higher Ed, Workforce, etc).



Overview
of the
OLDC

OLDC
Research &
Reporting

Future
projects

Oregon's
integrated
data
landscape

PROGRAM HISTORY

Key Milestones (pre-2020)

- ✓ 2015 – Chief Education Office established and SLDS identified as key program
- ✓ 2016 – Project receives funding from Legislature and contract established to build system
- ✓ 2018 – Project completed
- ✓ 2019 – OLDC Program launched

2020

Program runs with only **3 out of 9 positions filled** due to pandemic budget crisis
Incorporated new data from the National Student Clearinghouse and GED
Improved match rate with workforce to 75%

2021

Program **positions reduced** from 9 to 6 FTE
Incorporated new data from Teacher Standards and Practices Commission
Developed matched datasets for partner agency reports:

- ODE and TSPC for Educator Preparation Programs
- ODE, HECC and OED for federal reporting on K-12 CTE programs

2022

Current Status: **All 6 positions filled** and managing a portfolio of products

- Data provided for postsecondary Equity Briefs
- Data provided for ODE SB744 Report on postsecondary outcomes
- Data provided for ODE research study on 9th grade on track indicator
- 3 public reports: Education Pathway, SLDS Overview, Healthcare Shortage Study



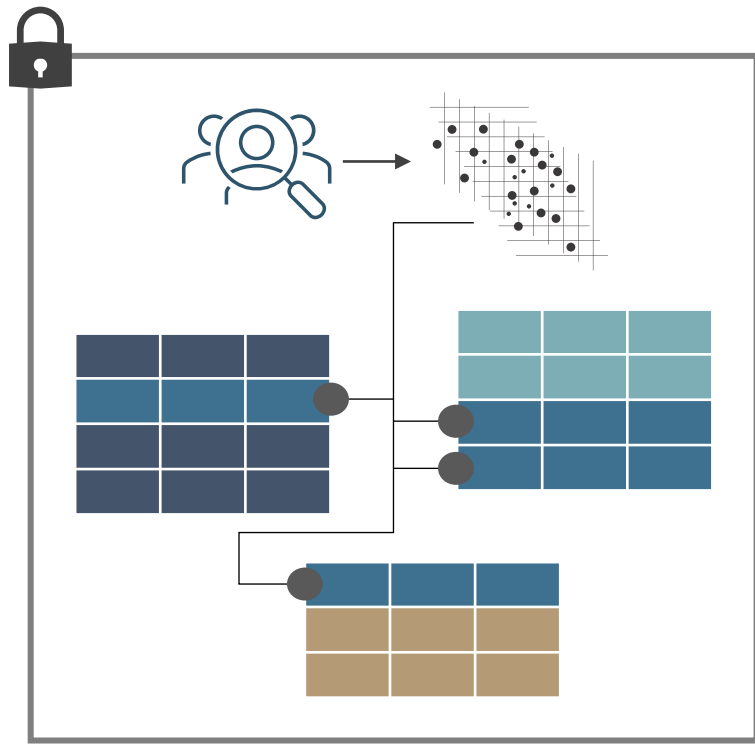
PROGRAM OVERVIEW

The goal of the OLDC is to **provide actionable data-supported policy recommendations that impact student learning, training, and workforce opportunities**

Data partner agencies share data with the OLDC



OLDC applies matching logic across data partner records



OLDC produces files, reports, and publishes research*



Recently published research on the nursing education shortage



PROGRAM OVERVIEW

The goal of the OLDC is to **provide actionable data-supported policy recommendations that impact student learning, training, and workforce opportunities**

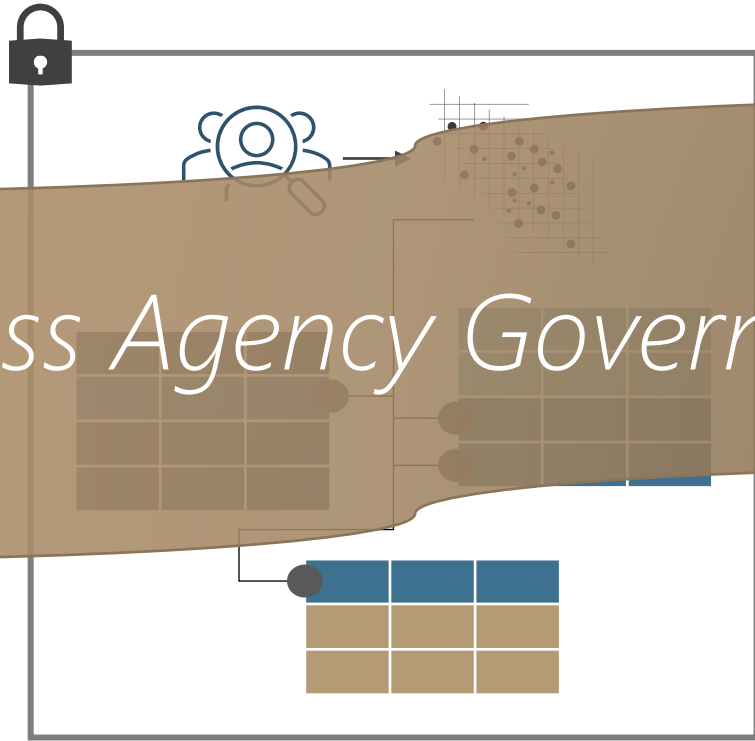
Data partner agencies share data with the OLDC

OLDC applies matching logic across data partner records

OLDC produces files, reports, and publishes research*



Cross Agency Governance

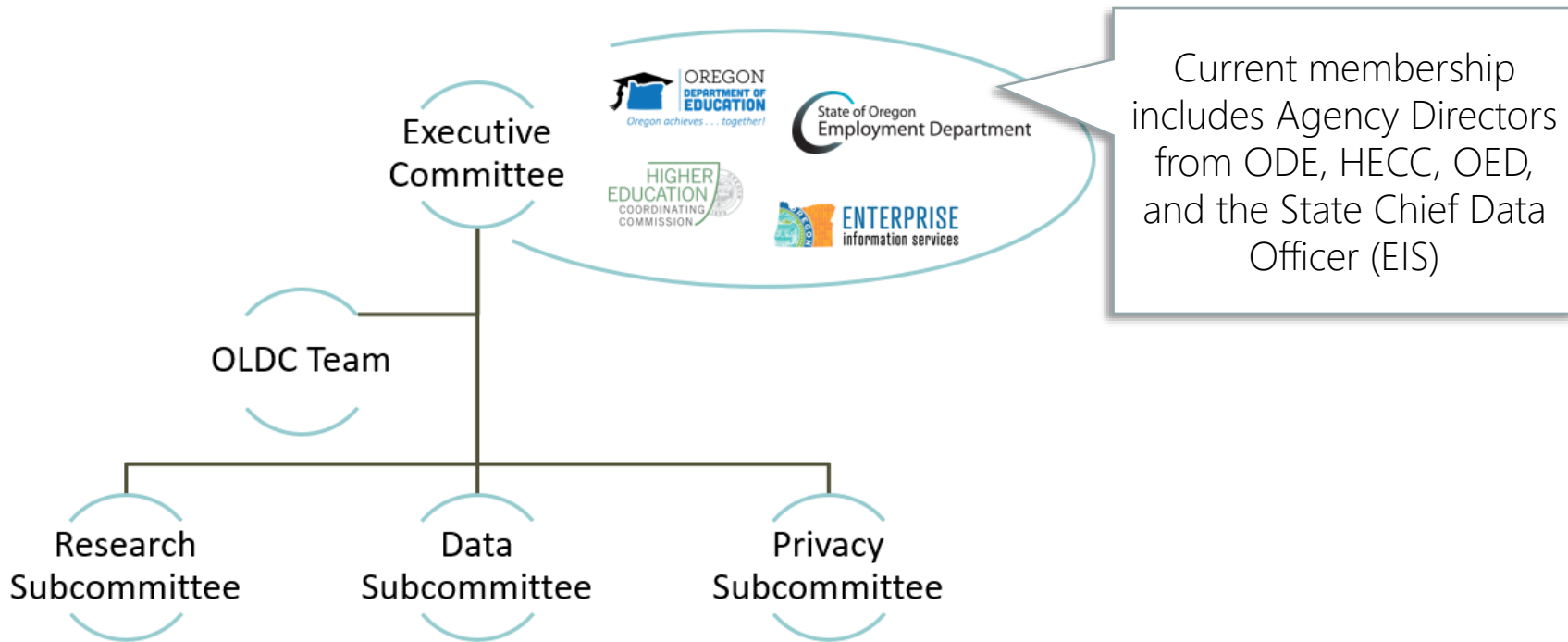


Recently published research on the nursing education shortage



PROGRAM GOVERNANCE

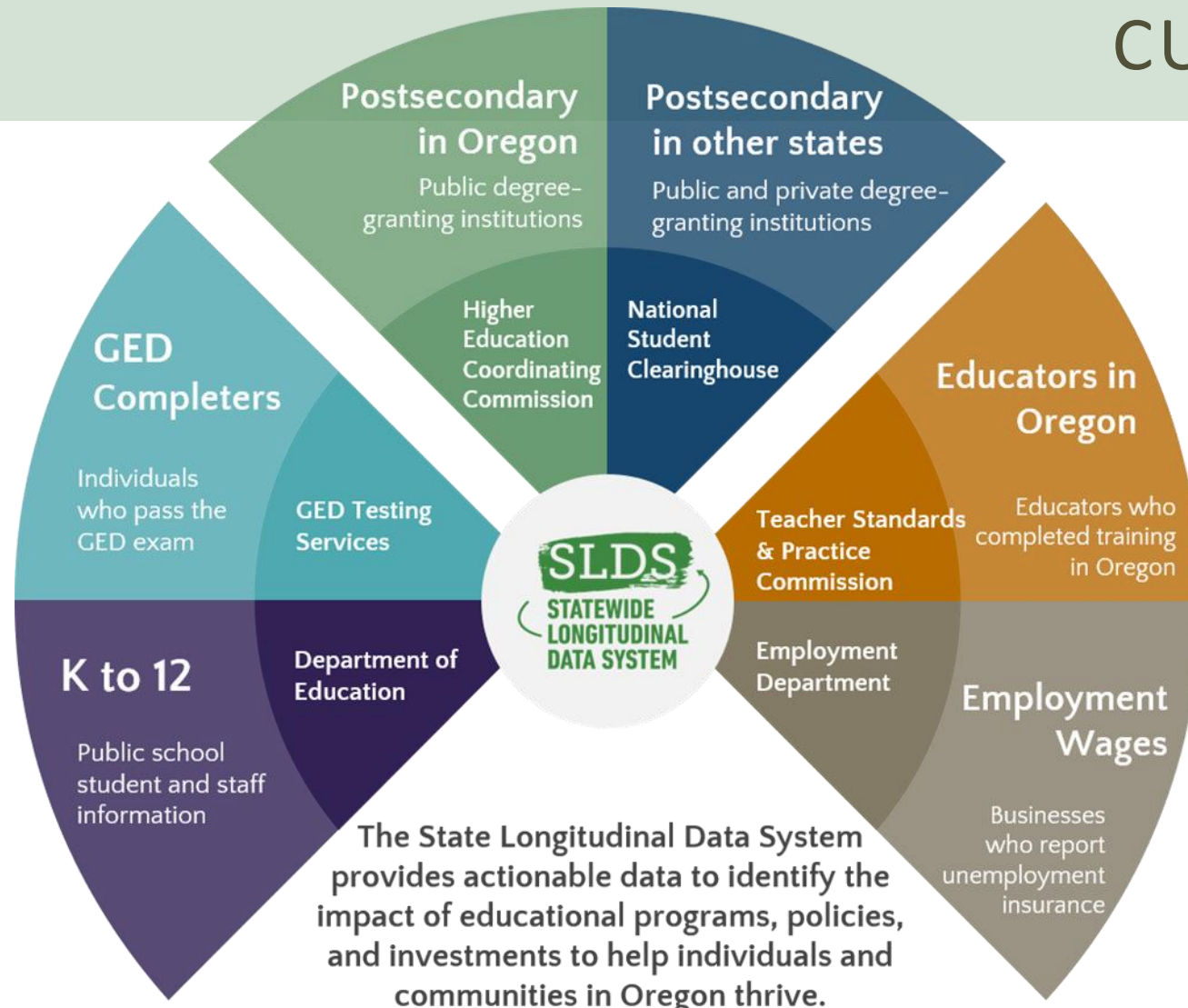
OLDC Governance Structure



The OLDC is administratively housed within the HECC



CURRENT DATA SOURCES

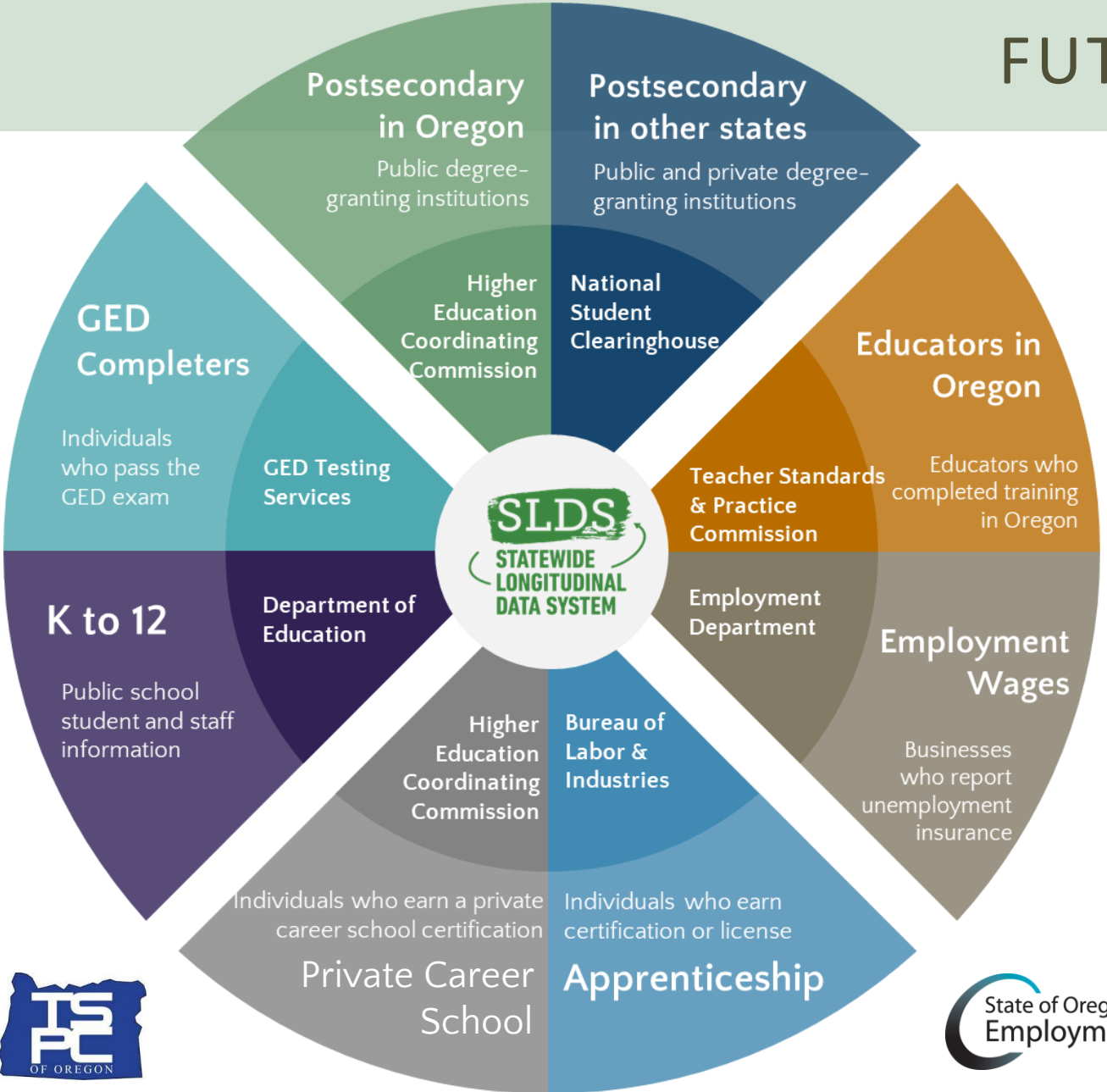


The State Longitudinal Data System provides actionable data to identify the impact of educational programs, policies, and investments to help individuals and communities in Oregon thrive.

Changes since initial launch:

- **Employment Wages**, now matching 70-75%
- Added **GED Completers**
- Added **National Student Clearing House** data that provides National enrollment and degree data of Oregon K-12 students
- Added **TSPC Educator Licensure Recommendation**

FUTURE DATA SOURCES



Onboard two data partners:

- BOLI Apprenticeship
- HECC Private Career School

These next data sources will expand our research to include additional non-degree credentials reflecting the additional pathways students take outside of college or university

Overview
of the
OLDC



OLDC
Research &
Reporting

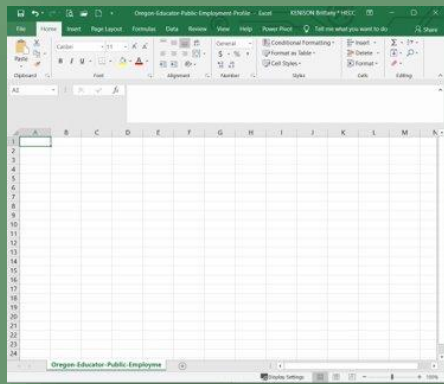
Future
projects

Oregon's
integrated
data
landscape

OLDC. Data products we provide



Raw Data File/ Curated Data File



Derived Data Report



Research Study



Illumina
Training
Pathway

Suppo

Promoti

Ur
we
re
ur

Alignmen
establishe

Supporti

Th
ac
pr

Resear

The OLDC

Intend

Underst
of Educ
on Prosj

Promoti
Dismant
Inequity

Intend

Understar
Pov
ind
sys
stu
mo

Illuminati
a Competi


The
opp
of e
sup
hov

https://

https://w

https://w

https://w



Oregon
Tina Kotek, Governor

Higher Education Coordinating Commission
Office of Research and Data
3225 25th Street SE
Salem, Oregon 97302
www.oregon.gov/HigherEd

OLDC OREGON LONGITUDINAL DATA COLLABORATIVE

2023 Research Agenda

Introduction
The Oregon Longitudinal Data Collaborative (OLDC) provides actionable data to identify the impact of educational programs, policies, and investments to help individuals and communities in Oregon thrive.¹ This Research Agenda identifies the specific intended outcomes for 2023 and the projects that will support those outcomes. Utilizing the OLDC managed Statewide Longitudinal Data System (SLDS) to connect the K-12, Postsecondary and Workforce systems, in order to understand how these systems interact and impact each other. OLDC places a high value on integrity, transparency, and equity. We acknowledge that the projects and objectives listed here impact far more than state agency staff and as such we need to include a wider range of voices into the process. OLDC is committed to identifying and including community voice into all aspects of the research and reporting process.

Scope
This research agenda aligns with statewide, program and governance goals, objectives, and values.
Alignment to Statewide Data Goals to the statewide data goals established by the Oregon Data Strategy.²
Alignment to Governance Objectives - The intended outcomes and projects listed here must align with the scope of the OLDC program. Each outcome and project must:

- Link data from two or more data partners (K-12, Teachers, Postsecondary, Apprenticeship or Workforce)

¹ https://www.oregon.gov/highered/research/Documents/SLDS-mission%20vision%20values_2019%20poster.pdf
² <https://www.oregon.gov/das/OSCIO/Pages/DataStrategy.aspx#principles>

2023 OLDC Research Agenda 1

RESEARCH AGENDA

- The agenda is developed and published annually
- Data products are approved by the Executive committee with input and recommendation from the Research and Data subcommittees as well as consultation with the Privacy subcommittee
- Ad-hoc data requests are reviewed by Research subcommittee



Oregon achieves... together!



OLDC 2022 Research Agenda Included 9 Projects

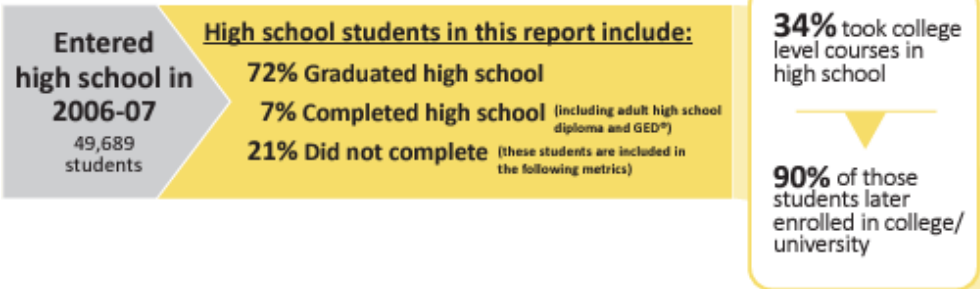
Name	Type	Status
Educator Prep Program	Raw Data File	Complete
CTE Data File	Curated Data File	Complete
SB744 Data File	Raw Data File	Complete
HECC Equity Briefs	Raw Data File	Complete
ODE IES Grant	Raw Data File	Complete
Education Pathway	Data Report	Complete
SLDS Overview	Data Report	Complete
Educator Prep Program	Data Report	Complete
Healthcare Shortage Study	Research Study	Complete



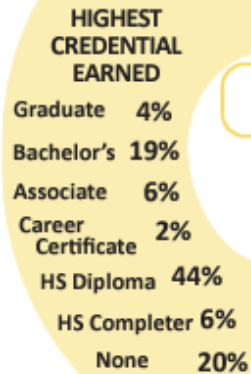
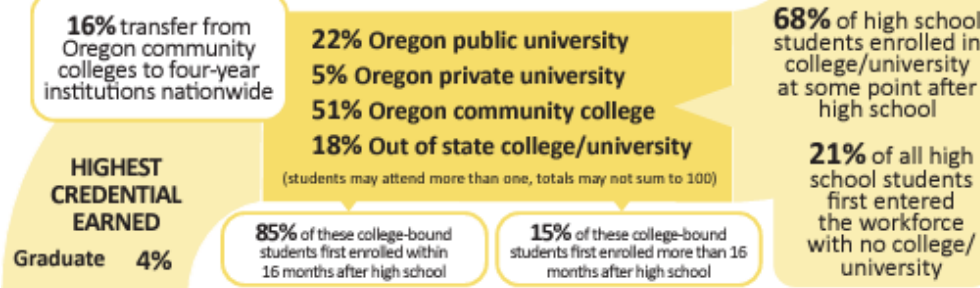
Where Are They Now? Educational Pathways in Oregon

Students in Oregon travel many different paths through the K-12, GED®, postsecondary, and employment systems. This illustration highlights the outcomes for all students who were freshmen in an Oregon public high school in 2006-07, regardless of which path they take after leaving high school. This report illuminates the many paths students take to earning educational credentials and what their wage outcomes are. All data listed reflect the enrollment and education credentials as of the end of the 2019-2020 academic year and wages earned in 2019. Future reports will investigate how this progress varies across the state and where equity gaps exist.

EXITING K-12

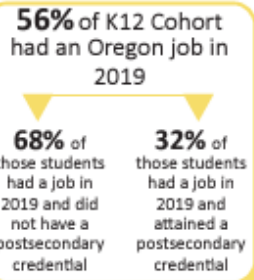


POSTSECONDARY



EMPLOYMENT (includes part-time wages)

Median Wages by Educational Credential	Number in workforce	Years in workforce
Graduate	\$44,455	1,101 2-4
Bachelor's	\$40,210	4,376 4-6
Associate	\$32,199	1,860 6-8
Career Certificate	\$32,467	513 6-8
State Median Wage	\$30,747	
HS Diploma	\$30,233	13,052 10
HS Completer	\$24,420	1,674 10
None	\$23,419	4,023 10+



Education Pathway Report

Infographic depicting the education pathways of students in a single K-12 graduating cohort from cradle to career, identifying key entries and achievement in postsecondary and workforce.

Beyond results, project clarified unique contribution of longitudinal metrics, which differ from agency reporting.

These next versions of this report will be interactive and allow views of outcomes by gender, race/ethnicity and rural/urban.

OLDC. Healthcare Shortage Study

OLDC OREGON LONGITUDINAL DATA COLLABORATIVE

Addressing the nursing shortage in Oregon:

removing barriers in nursing education

Publish date - March 14th, 2023
Summary of Findings and Recommendations from the Oregon Healthcare Education Shortage Study
<https://www.oregon.gov/highered/research/Pages/OLDC.aspx>

Prepared by
Oregon Longitudinal Data Collaborative

Lead Researcher
Jesse Helligso, Ph.D., M.A.
OLDC Senior Research & Data Analyst

Contact Information
Ben Tate
OLDC Director
ben.tate@hecc.oregon.gov

Healthcare Shortage Study

- Oregon ranks last in the continental U.S for number of nursing graduates per capita across public institutions.
- Plenty of qualified students apply to the nursing programs in Oregon – about 6,800, but only 23% are accepted.

This study delves into the factors causing this shortage and recommends a series of steps to address these issues.

Overview
of the
OLDC

OLDC
Research &
Reporting

Future
projects

Oregon's
integrated
data
landscape

2023 RESEARCH AGENDA: *INTENDED OUTCOMES*

1. Understanding the Impact of Educational Attainment on Prosperity
2. Illuminating Pathways between Education/Training and Labor Force to Meet the Needs of a Competitive and Dynamic Market
3. Promoting Action to Dismantle Systems of Inequity
4. Supporting Agency Reporting Needs



Oregon achieves . . . together!

2023 RESEARCH AGENDA: *PROJECTS*

Underway Now:

- 1.) Educator Pipeline Report – A report looking at Educators from program enrollment, through graduation, licensure and employment in the public school system. These data points will be disaggregated by race/ethnicity, gender and region (rural/urban).
- 2.) Poverty and Economic Mobility Study – A research study looking at students in poverty and what education programs are correlated with them breaking the cycle of poverty.

Up Next:

- 1.) Data Refresh – SLDS Overview Report, HECC Equity Briefs, CTE Data Report, and Oregon Educator Public Employment Data.
- 2.) Educator Pipeline Study – Based on the data from the Educator Pipeline report, a look into where potential issues are in the pipeline that may keep people from teaching.



Oregon achieves . . . together!

REQUEST PROCESS

Data Requests - Now

Currently, only accepting research requests from State Government (i.e. Executive Branch Agencies and Legislature).

Research subcommittee reviews and approves requests. Executive Committee sets priority of requests.

OLDC Researcher engages with agency SMEs to learn about how data is collected, validates, applicable policy and regulations

Data Requests - Future

Accept requests from any research or government entity (University, city, county, etc).

Research Subcommittee, and Institutional Review Board (IRB) reviews and approves requests. Executive Committee sets priority of requests.

Determine if request can be answered by existing dashboard.

OLDC Researcher engages with agency SMEs to learn about how data is collected, validates, applicable policy and regulations



Overview
of the
OLDC

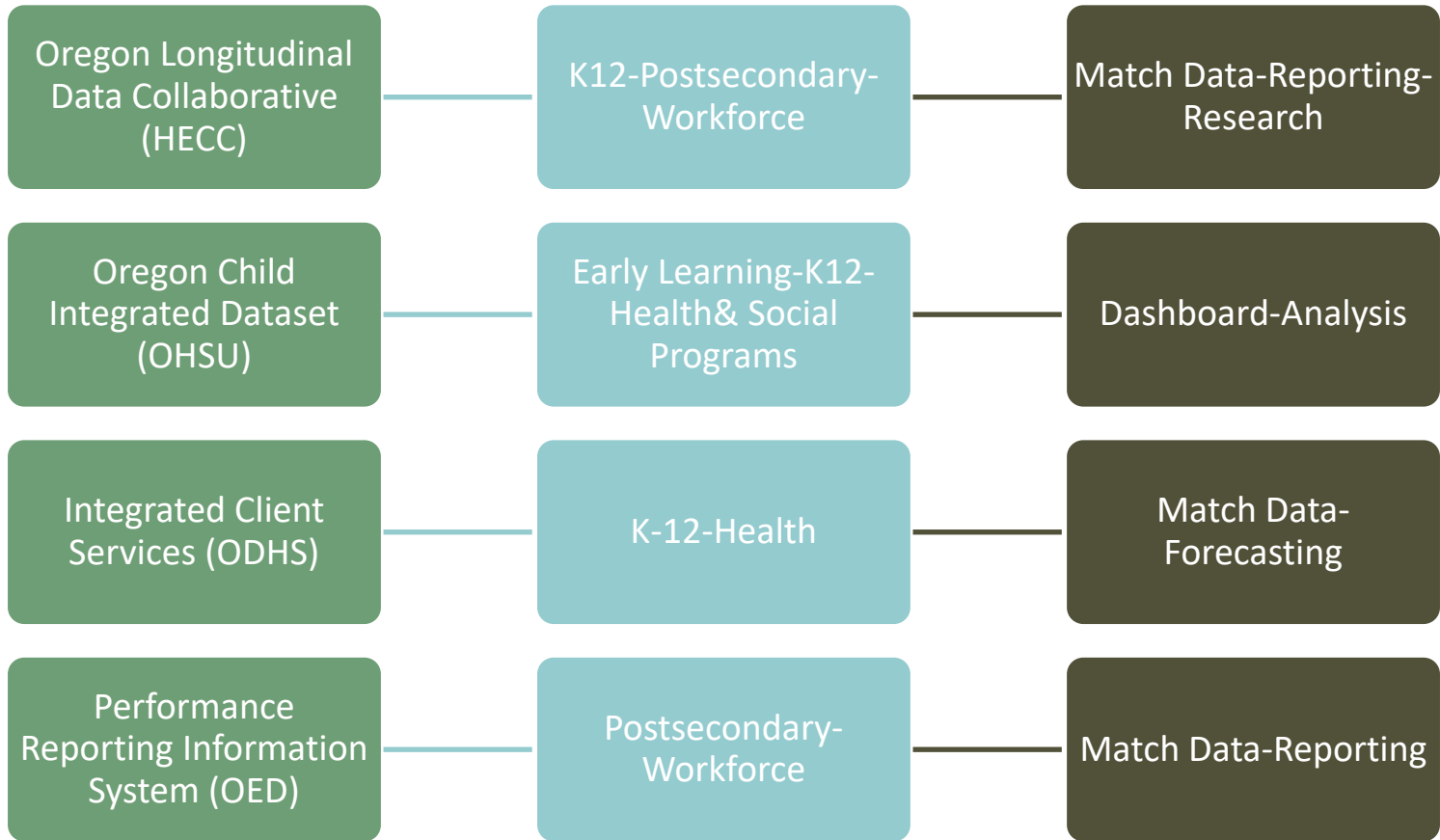
OLDC
Research &
Reporting

Future
projects



Oregon's
integrated
data
landscape

OREGON'S INTEGRATED DATA LANDSCAPE*



OLDC maintains connections with other programs by:

- Meet with OCID Director and CDO monthly and part of OCID Data Analyst Forum
- Work with ICS on matching support
- Attend PRISM Steering Committee on an as-needed basis
- Meet with all groups and CDO to discuss IDS needs for state

*For more information on data sharing among state agencies, see the report submitted by the Chief Data Officer to JLCIMT in March



Thank you!

