

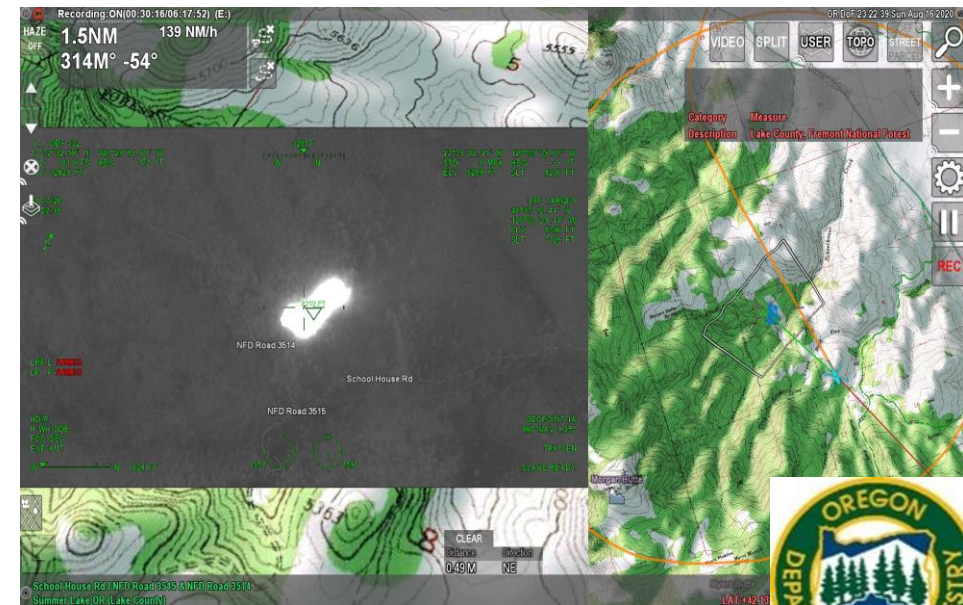


Firefighting Equipment Needs
Senate Committee on Natural Resources
May 17, 2023

Tim Holschbach
Oregon Department of Forestry
Deputy Chief – Policy & Planning
503-945-7434
tim.j.holschbach@oregon.gov

-
- Partenavia P-68 has been in service for 40 years

In the 2022 fire season, the MMA detected 69 fires, 60 of which were detected during extreme fire danger. The early detection of these fires helped to prevent the majority of them from growing into larger fires. Out of the 69 total detections, none of the fires on ODF-protected lands grew larger than 10 acres. Over the span of the season, ODF pilots and operators banked approximately 92 hours in the sky in search of new fire starts, the most in one night being 21 detections.



-
- Twin Otter and Cessna Sky Courier examples of high wing turbine powered aircraft



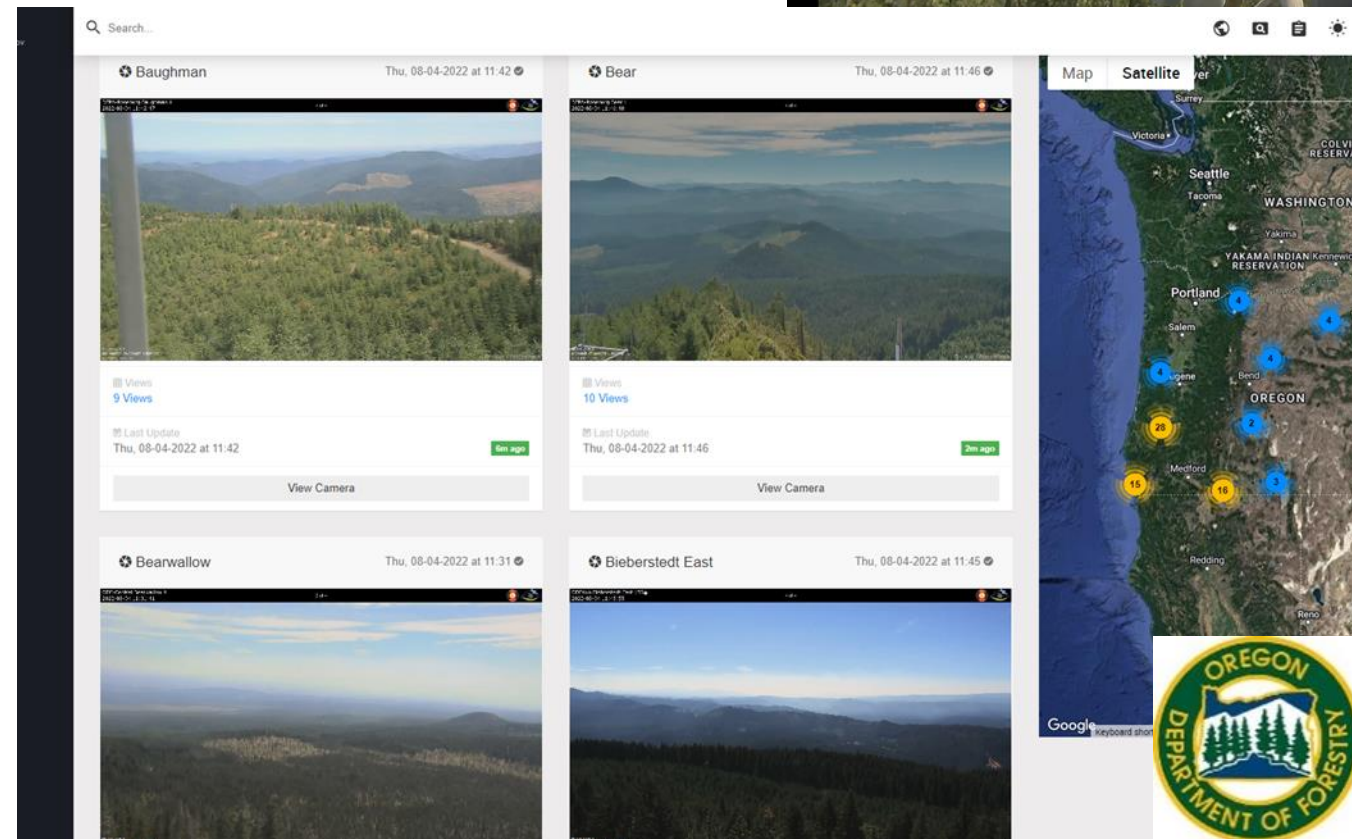
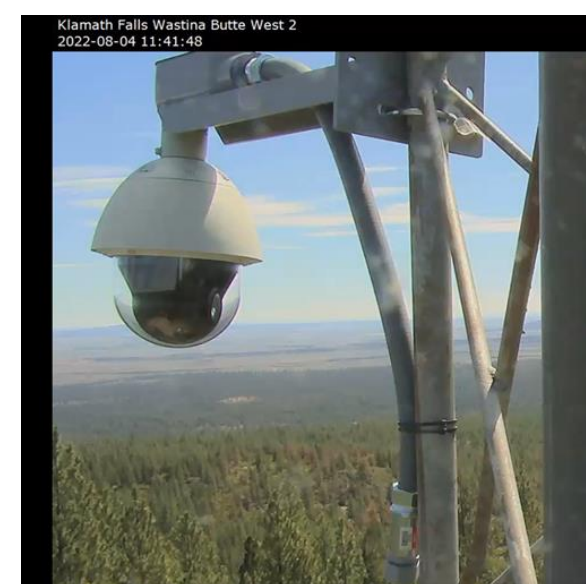
- Twin engine turbine
- High wing aircraft
- Infrared and night vision goggle equipped or compatible platform with supplemental type
- Certificate at purchase
- STOL (Short Takeoff/Landing) aircraft performance
- Minimum 10-passenger capacity
- Cargo rail floor system for pallets
- 8,000' single engine service ceiling
- Cargo rear door with ability to open in flight
- Type certificated aircraft



ENVIROVISION SOLUTIONS FORESTWATCH SYSTEM

- Comparable to the ALERTWildfire platform
- Piloted by Douglas Forest Protective Association since 2006
- Adopted by Oregon Dept. of Forestry in SW Oregon in 2013
- Adopted in Eastern Oregon in 2019
- 16 years of effective use

- ✓ Currently 85 cameras on 63 mountaintop sites (11 of these cameras are SB762 funded)
- ✓ Features pan-tilt-zoom, geo-location, smoke alert system
- ✓ Camera system controls available to camera operators, initial attack dispatchers and fire managers
- ✓ Access to camera imagery via credentialed access to fire service and emergency responders
- ✓ Distributed via phone, laptop, tablet



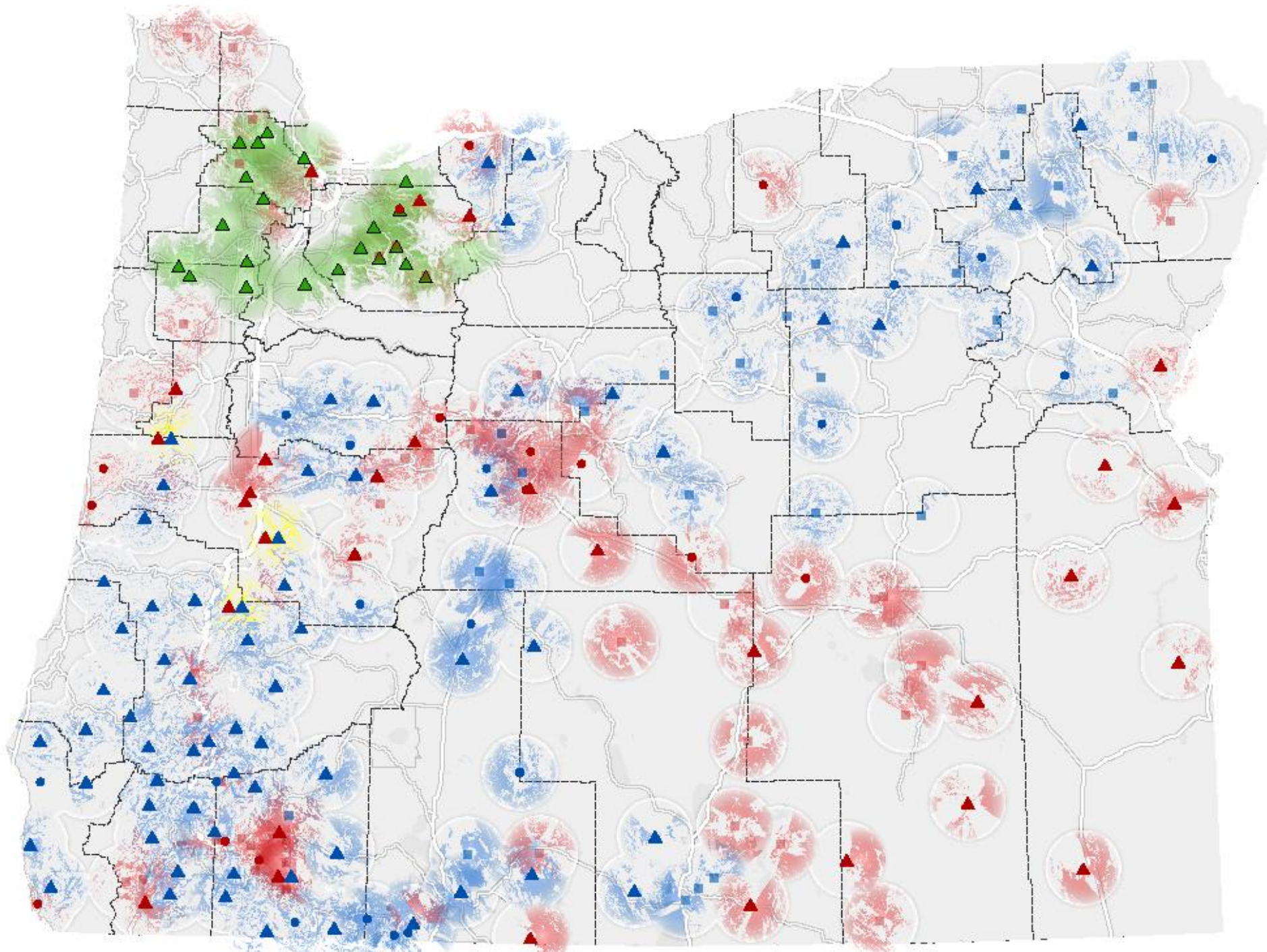
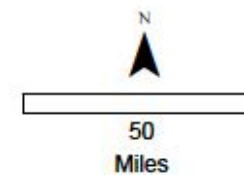
EVS FOREST WATCH

Tied directly to detection monitoring and initial attack response

- 5 Detection Centers
 - Douglas FPA (Roseburg)
 - ODF Southwest Oregon (Medford)
 - ODF Klamath-Lake (Lakeview)
 - ODF Central Oregon (Redmond)
 - ODF Northeast Oregon (La Grande)
- System alerts and geo-locates – tied to the FireWeb service
- All detection centers are co-located in initial attack dispatch centers
- A FLIR camera is being piloted in Douglas FPA for night detection
- Last year caught 25% of fires within the system viewshed as the initial detection
- An effective tool in the detection toolbox



OREGON WILDFIRE DETECTION NETWORK 2023



EnviroVision Solutions Sites

- ▲ Operational
- Planned Through July 2023
- Future

Alert Wildfire Site

- ▲ Operational
- Planned Through July 2023
- Future

Pano AI Sites

- ▲ Operational

Modeled Viewshed

- EnviroVision Solutions
- ALERTWildfire
- Pano AI
- Both ALERTWildfire & EnviroVision Solutions
- 12 Mile Visibility Radius

