

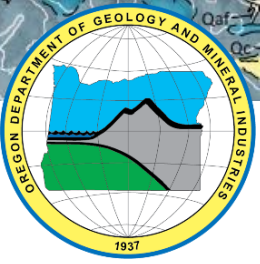
# Oregon Department of Geology and Mineral Industries

## FEMA Cooperating Technical Partnership Grant

Joint Committee on Ways and Means

Subcommittee on Natural Resources

May 11, 2023



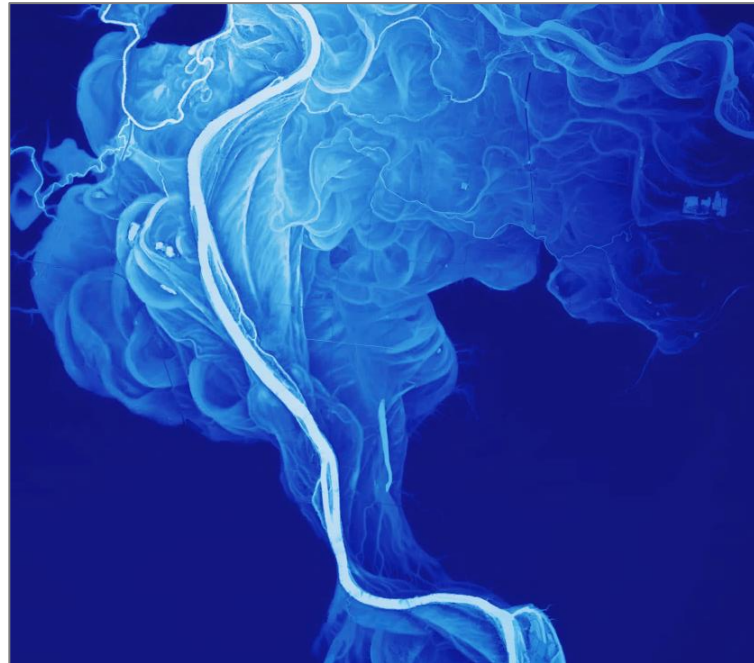
# FEMA Cooperative Technical Partners Program

- DOGAMI has received over \$14,000,000 in support from the FEMA Cooperative Technical Partners Program since 2008

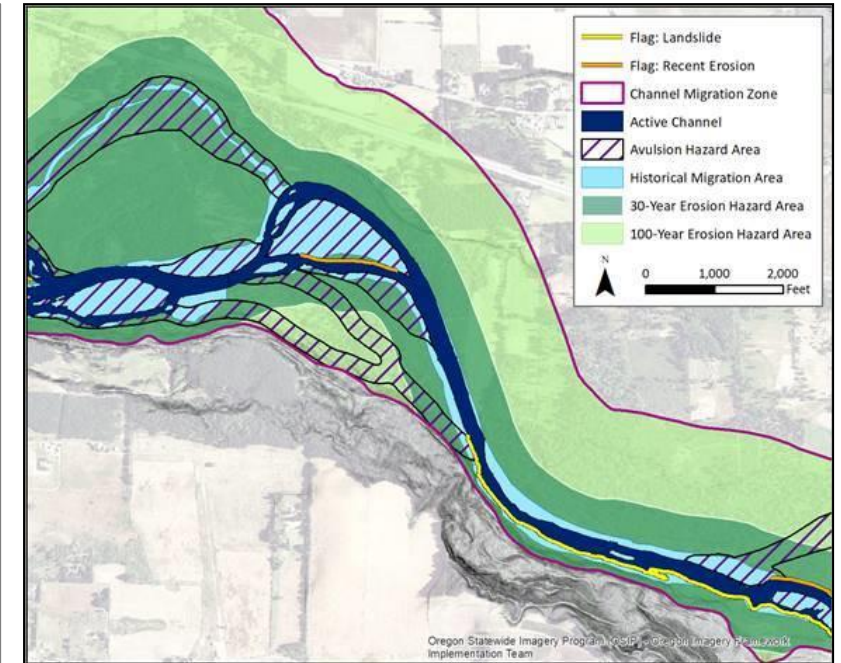
## *CTP Grant Example: Channel Migration Zone Mapping*



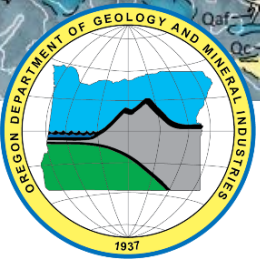
Umatilla County Search and Rescue, 2020



DOGAMI, 2013



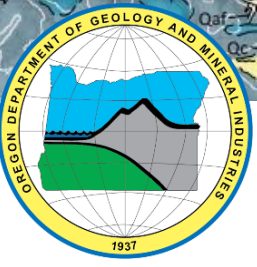
DOGAMI, 2021



# FEMA Cooperative Technical Partners Program

- FY23 request: Total of \$813,528 in support divided across four projects, split into two grant applications per FEMA's request
  - Grant 1: Geohazard Mapping and Vulnerability Assessment
  - Grant 2: Outreach
- Grant details:
  - Full indirect to sponsored agency.
  - No match required.
  - No expenditure limitation is requested.





# Grant 1 - Project 1: Coastal Coos County Landslide Mapping and Analysis

Goal: Develop a detailed landslide inventory. DOGAMI will give presentations and publish maps, GIS data, and a technical report. In coordination with DLCD, DOGAMI will lead a series of landslide risk reduction meetings.

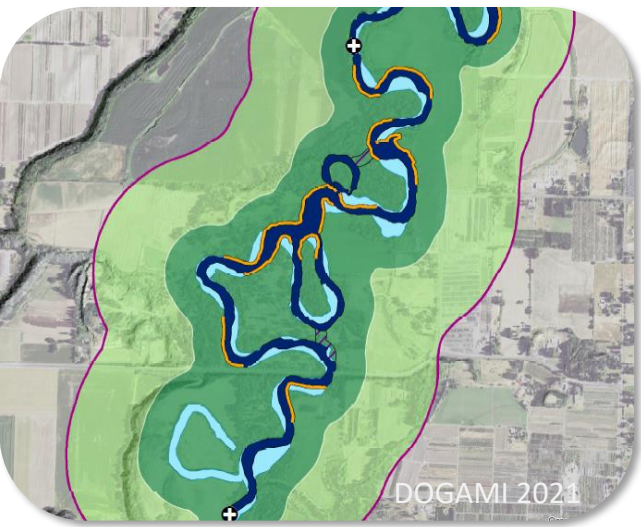
Budget : \$300,000

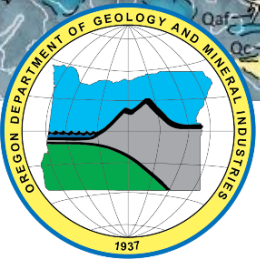


# Grant 1 - Project 2: Jackson County Geohazard Mapping

Goal: Develop a detailed landslide inventory, map channel migration zones, and update coseismic hazard maps (liquefaction and ground motion amplification). DOGAMI will give presentations and publish maps, GIS data, and a technical report.

Budget : \$247,528





## Grant 1 - Project 3: Clackamas County Vulnerability Assessment

Goal: Develop a geohazard vulnerability assessment methodology that includes community lifelines, socially vulnerable population data, unreinforced masonry buildings, and rapid visual screening of critical facilities. DOGAMI will give presentations and publish maps, GIS data, and a technical report.

Budget : \$135,000



## Grant 2 - Project 4: Umatilla and Harney County Outreach

Goal: Create outreach materials (Story Maps and factsheets) and host workshops for local stakeholders in Walla Walla and Harney Basins to promote understanding of groundwater resources. DOGAMI will also participate in statewide FEMA hazard outreach meetings.

Budget : \$131,000



