

Pacific Power Wildfire Mitigation Program

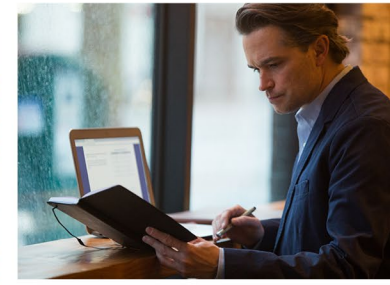
Allen Berreth

Vice President, Transmission & Distribution Operations

Oregon House

Committee on Climate, Energy and Environment

May 8, 2023



FOUNDATION OF PLAN

Established strategies for wildfire risk mitigation

Situationally aware of environmental risks

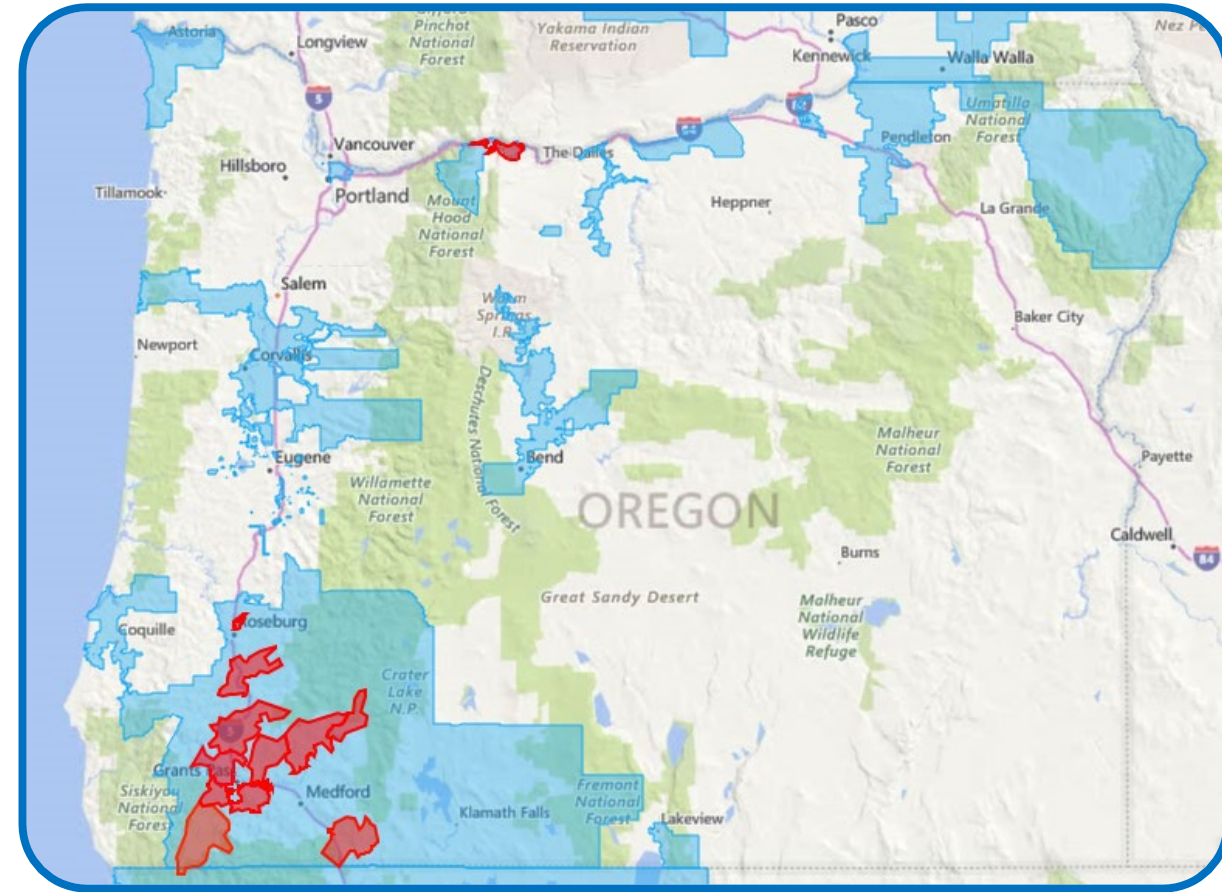
- Risk modeling and fire simulation analysis software
- Monitor fire weather conditions across entire service territory
- Implement operational strategies during elevated risk periods
- Collaboration and coordination with public safety partners
- Evaluate the need for Public Safety Power Shutoff

Resilient system to limit potential for ignition

- Enhanced inspection programs
- Expanded vegetation management practices
- Deploy overhead covered conductor and undergrounding of lines

Rapid response to fault events

- Utilize more sensitive protective coordination equipment
- Replace fuse locations with non-expulsion equipment

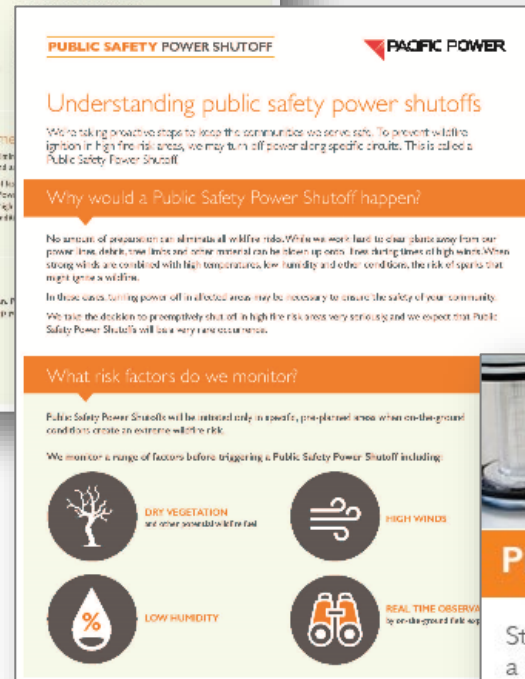
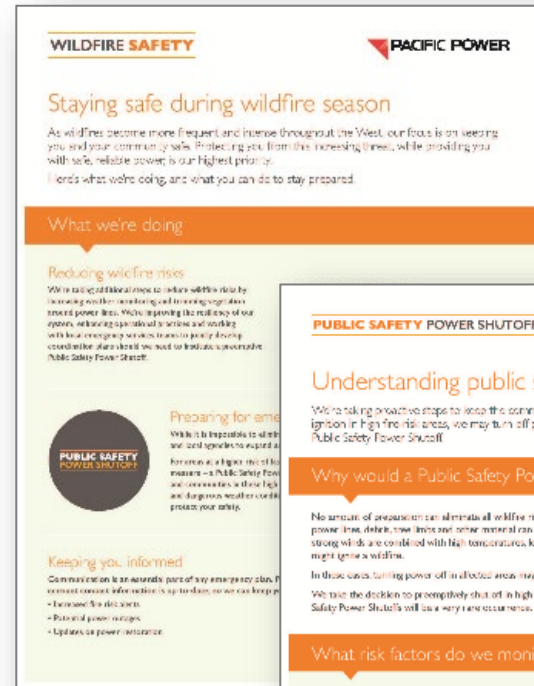


COMMUNITY OUTREACH

- ✓ Advertising
 - Print
 - Radio
 - Digital
 - Social
- ✓ Media outreach
- ✓ Customer Emails
- ✓ Bill messages
- ✓ Webinars
- ✓ Informational sheets
- ✓ Resource center on website

Customer Communication

Wildfire Mitigation and Safety



COORDINATION WITH PUBLIC SAFETY PARTNERS

- ✓ Tabletop exercises with Public Safety Partners (Emergency Services, Fire Response, etc.)
- ✓ Identification of critical infrastructure in the community
- ✓ Partner to establish locations for Community Resource Centers

Community Resource Center Services

- ✓ Shelter from environment
- ✓ Air conditioning
- ✓ Potable water
- ✓ Seating and tables
- ✓ Restroom facilities
- ✓ Refrigeration for medicine and/or baby needs
- ✓ Interior and area lighting
- ✓ On-site security
- ✓ Wi-fi access, radio
- ✓ Televisions
- ✓ On-site medical support (EMT-A at a minimum, paramedic preferred)
- ✓ Charging stations
- ✓ Air purifiers
- ✓ Air quality monitors
- ✓ Ice
- ✓ Non-perishable snacks
- ✓ Small crates for pets
- ✓ Portable ADA ramp

CRITICAL INFRASTRUCTURE	
✓	Maintain lists within our new Public Safety Partner Portal (launched June 1 st , 2022)
✓	Monthly updates and download capability by public safety partners
→	Outreach to update primary and secondary points of contact for facilities and collect backup generation capabilities
✓	Facilities can request to be added to our list online from our critical facilities page
→	Validation of our critical infrastructure with the respective county or tribal emergency managers

EMERGENCY RESPONSE PARTNERS	
✓	Formal collaboration through annual tabletop and functional exercises
✓	Engage and maintain local situational awareness through county emergency manager(s)
✓	Deploy personnel to the local EOC as needed to coordinate responsibilities and distribute information
✓	Situational reporting with county emergency managers
→	Bring on additional PacifiCorp personnel to support more frequent coordination

Questions?