

Oregon Community College Capital Construction Projects



Community College Capital Construction Project Selection Process

Collaborative & Supportive



CENTRAL OREGON
community college

**\$4,000,000
Match Needed**

Renovation and Expansion of CTE Facilities at COCC Redmond Campus

**Renovation and expansion of existing
facilities; goal is to update and expand
COCC's workforce development
programming**



Reducing request from \$8 million to \$4 million.

Project intended to help COCC meet the current and anticipated workforce demands of the region.

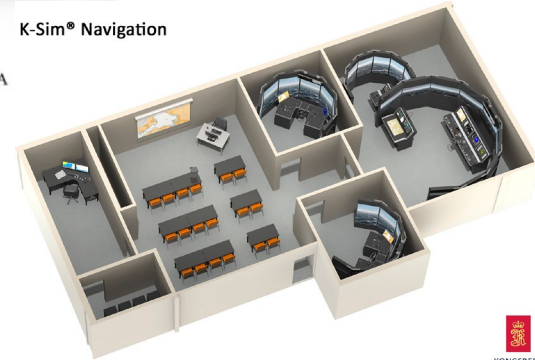
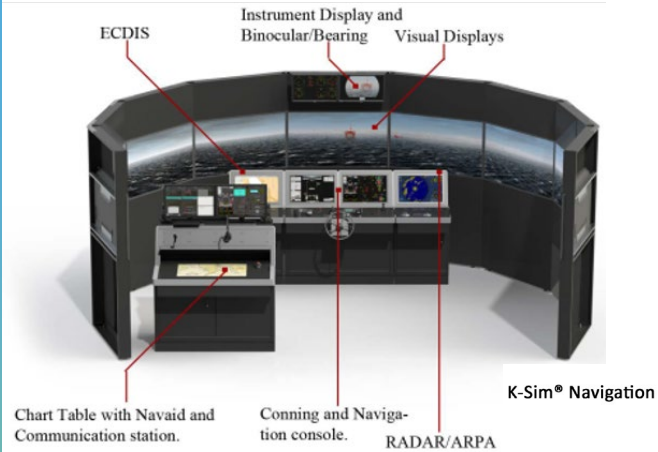
Project scope has shifted from new construction to renovation and expansion with a particular emphasis on improving facilities for manufacturing and skilled-trades apprenticeship.



Clatsop
Community
College

**\$7,900,000
Match Needed**

Maritime Science Center
Remodel the existing maritime
building to equip it with labs and
simulators needed to train the future
labor force in the Maritime Industry.



Increase and Update the Learning Environments:

- Bridge and Tugboat Simulators, Electronics Navigation Lab, Seamanship and Deck Assessment Labs
- Renovate over 13,000 sq. ft. into specialized space and infrastructure for Oregon's only Maritime Science Degree Program



\$8,000,000 Match Needed

(reauthorization request from 2017)

Center for Trades Education

25,000 sq.ft. new construction

Flexible industrial learning spaces

Located in Newport on College-owned
property

Fiscal

State funds approx. 40% of building costs

Plan: 60% balance (match) from local bond

First realistic bond opportunity (*accreditation
in 2020, pandemic, wildfires*)



Expanding career options, growing the skilled trades workforce

- Cycling of programs based on employment opportunities, student demand, and industry support
- Programs may include:
 - Welding & Maritime,
 - Mechanical & Electrical Systems,
 - Emergency Response,
 - Construction Trades, and
 - increased Dual Credit options



**\$8,000,000
Match Needed**

**\$23.5 million renovation of
Science, Mathematics and
Engineering Building (Bldg 16)**

**The 89,547 sq. ft. building serves
more than 5800 students each year**



Project renovates existing Building 16 on LCC main campus

- Modernizes lab and classroom spaces, most of which were constructed in the mid-1960's
- Addresses ADA compliance, safety and infrastructure issues
- Increases in-person learning opportunities and supports growth of high-demand programs
- Allows for enhanced tutoring, advising and career counseling services



SOUTHWESTERN
AN OREGON COMMUNITY COLLEGE

**\$8,000,000
Match Needed**

SUCCESS Project
Student Uplift & Collaboration
**Create Expanded
Support & Success**



Remodel Tioga, Stensland & Dellwood Halls

Tioga Hall

- Create student union for activities, study and clubs.
- Renovate multi-tied space to link tutoring and cultural resource centers, and gathering space.
- Design more accessible, collaborative and safe environment.

Stensland Hall

- Combine student services from several into one building.

Dellwood Hall

- Relocate library to front of campus to provide equitable access for community and people with disabilities.



**\$5,500,000
match needed**

The Dalles, Hood River Renovations for Student Access and Success

**CGCC will ensure seismic resiliency
and ADA compliance, expand hybrid
learning opportunities, and install
campus safety measures.**



Seismic analysis and retrofit

- The Dalles Campus administrative building constructed 1924; main classroom building constructed 1960s.

Renovations for student access and success

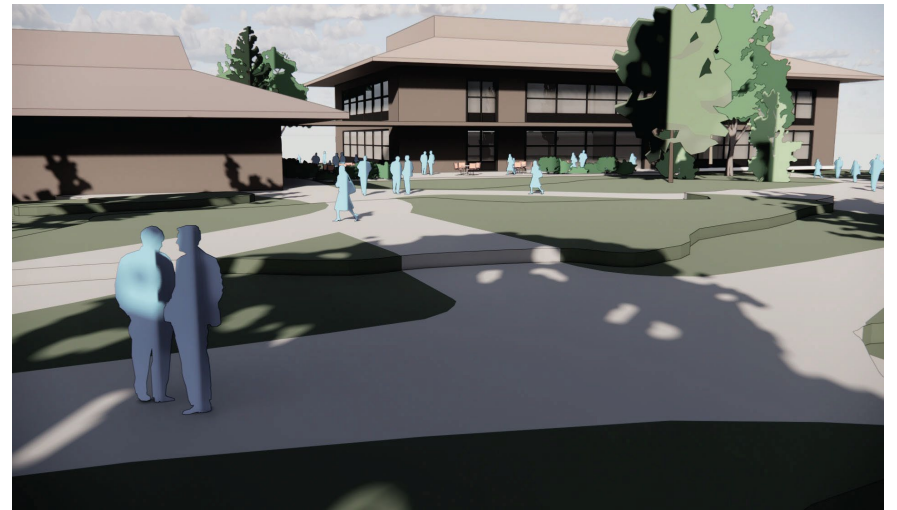
- Building on pandemic experience, ensure capacity to deliver virtual instruction efficiently through technology upgrade.
- Interior renovations for student resource center, commercial kitchen expansion, faculty offices.
- Replace failing elevator, enhance ADA access, campus safety measures for The Dalles, Hood River campuses.



UMPQUA
Community College

\$8,000,000
Match Needed

**Welcome Center &
Medical Careers
Training Hub**



- 26,000 sq ft
- Student forward welcome center facility on the ground floor
- Medical program lab facilities on the second floor to house 8 new medical careers programs
- Replace existing building that lacks functionality and accessibility
- Serve the local healthcare industry with highly skilled workforce
- Create increased opportunities for students to engage in family supporting wage careers



**\$8,000,000
Match Needed**

Rock Creek Building 2 Complex

**\$30 million project budget;
\$20 million college funding**

**30,000 to 50,000 square feet of Career
Technical Education space for Building
Construction Technology and Automotive
Collision and Repair Services**

**Identified in PCC's Facilities Plan and
included in the General Obligation Bond
Series 2023**



Phase I will:

- Provide customized, hands-learning space
- Flexible environment for interdisciplinary learning
- Improve educational delivery modes
- Offer more equitable facilities
- Save on deferred maintenance costs
- Support sustainability and resiliency, in line with the College Climate Action Plan

Timeline:

- Pre-Design: 2023
- Design: 2024
- Construction: 2025
- Building Opening: 2026