

Joint Committee on Ways & Means Subcommittee on Natural Resources



82nd Oregon Legislative Assembly • February 28 – March 1, 2023
2023-2025 Biennial Budget

Agenda

DAY 1 »

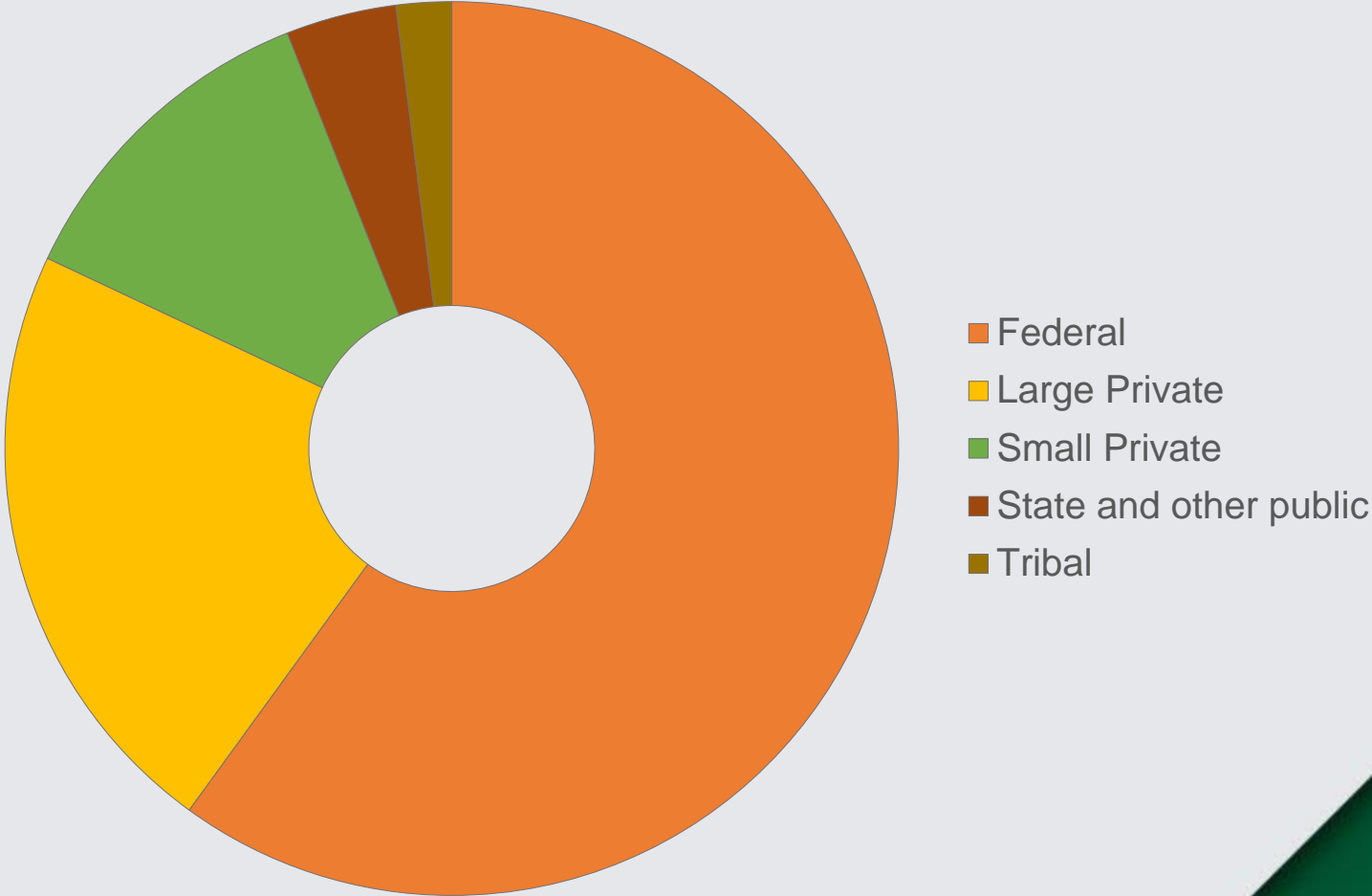
- Department Overview
- Fire Protection Division

DAY 2 »

- Forest Resources Division
- State Forests Division
- Planning Branch
- Agency Administration
- Governor's Budget



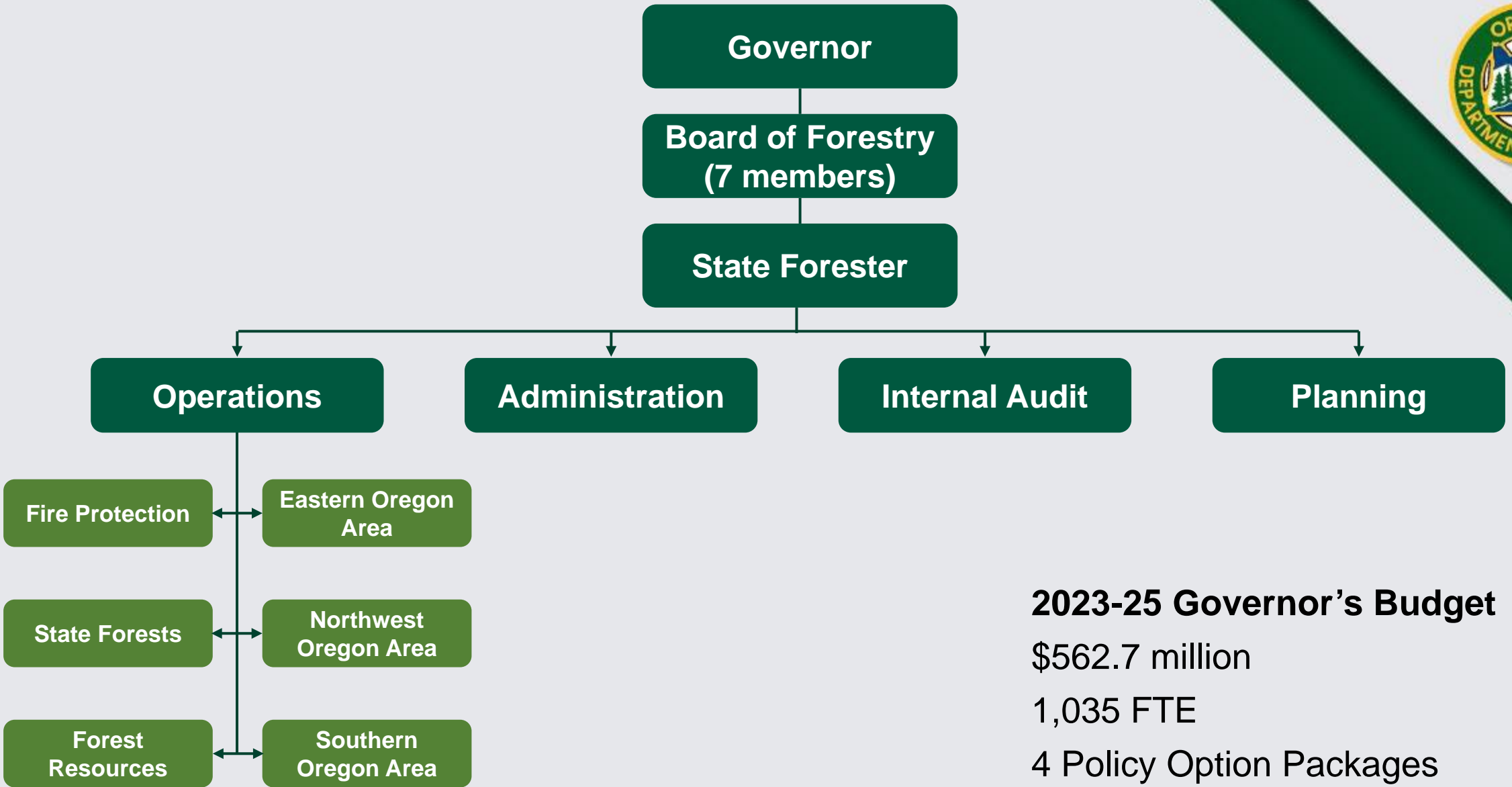
Who owns Oregon's Forests?



Mission

To serve the people of Oregon by protecting, managing, and promoting stewardship of Oregon's forests to enhance environmental, economic, and community sustainability.







Fire Protection Division

- Protection for **16 million** acres of private, state, local and some federal forestlands
- Complete and coordinated system
- Wildfire prevention
- Smoke mitigation
- Funding wildland firefighting in Oregon





Forest Resources Division

- Forest Practices Act
- Forest Health
- Landowner Assistance
- Urban & Community Forestry
- Landscape Resiliency
- Federal Forest Restoration and Good Neighbor Authority
- Private Forest Accord





State Forests Division

- Management of more than 760,000 acres of working forests for greatest permanent value
 - » Social, economic & environmental
- Funded by timber sales
- Habitat Conservation Plan & Forest Management Plan



Planning Branch

- Supports strategic planning, issue analysis, decision support, statewide initiatives and external relationships
- Responsive to increasingly complex operating environment





Agency Administration

Responsible for ODF's key administrative functions, including:

- Human Resources
- Public Affairs
- Finance and Budget
- Procurement
- Information Technology
- Facilities





2021-23 in Review

- Senate Bill 762
- Private Forest Accord
- MGO recommendations



Challenges & Opportunities

- **Challenge**—Cost of wildfire
- **Challenge**—Climate change
 - » Social, economic & environmental
 - » Wildfires
 - » Forest health
 - » Forest benefits
- **Opportunity & challenge**—Large increase in federal funds for forest restoration and resilience, but limited workforce capacity (public & private)





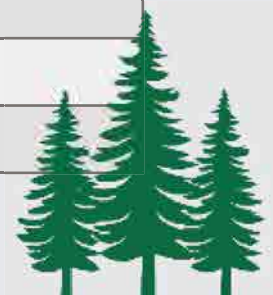
2023 Legislative Session

Bills with potential budget impacts for ODF	
HB 2187 SB 753	GF appropriation related to Sudden Oak Death.
HB 2813	Requires OHA to ensure communities have access to safe water.
HB 2985	Directs DCBS to establish Prescribed Fire Liability Pilot Program.
HB 2986	Directs ODF to establish by rule a Prescribed Fire Capacity Grant Program.
HB 3016	Establishes Community Green Infrastructure Grant Program.
HB 3241	Establishes harvest tax rate for 2024 & 2025.
SB 80	ODF to study wildfire and report findings to the Legislature.
SB 90	Requires ODF to study issues related to establishment of task force to develop recommendations on state forest management.
SB 509	Requires ODF to study community-based programs for reducing wildfire risk.
SB 530	Establishes state policy regarding natural climate solutions.



Key Performance Measures (KPMs)

#	Measure title
1	Customer service to county governments and forest landowners
2	Board of forestry performance
3	Forest practices act compliance
4	Urban and community forest management
5	State forests total revenue
6	Air quality protection
7	Private forestland managed at or above forest practices act standards
8	Forest stream water quality
9	Voluntary public and private investments made to create healthy forests
10	State forests north coast habitat
11	Fire suppression effectiveness
12	Prevention of human-caused wildland forest fires
13	Damage to Oregon forests from insects, diseases, and other agents





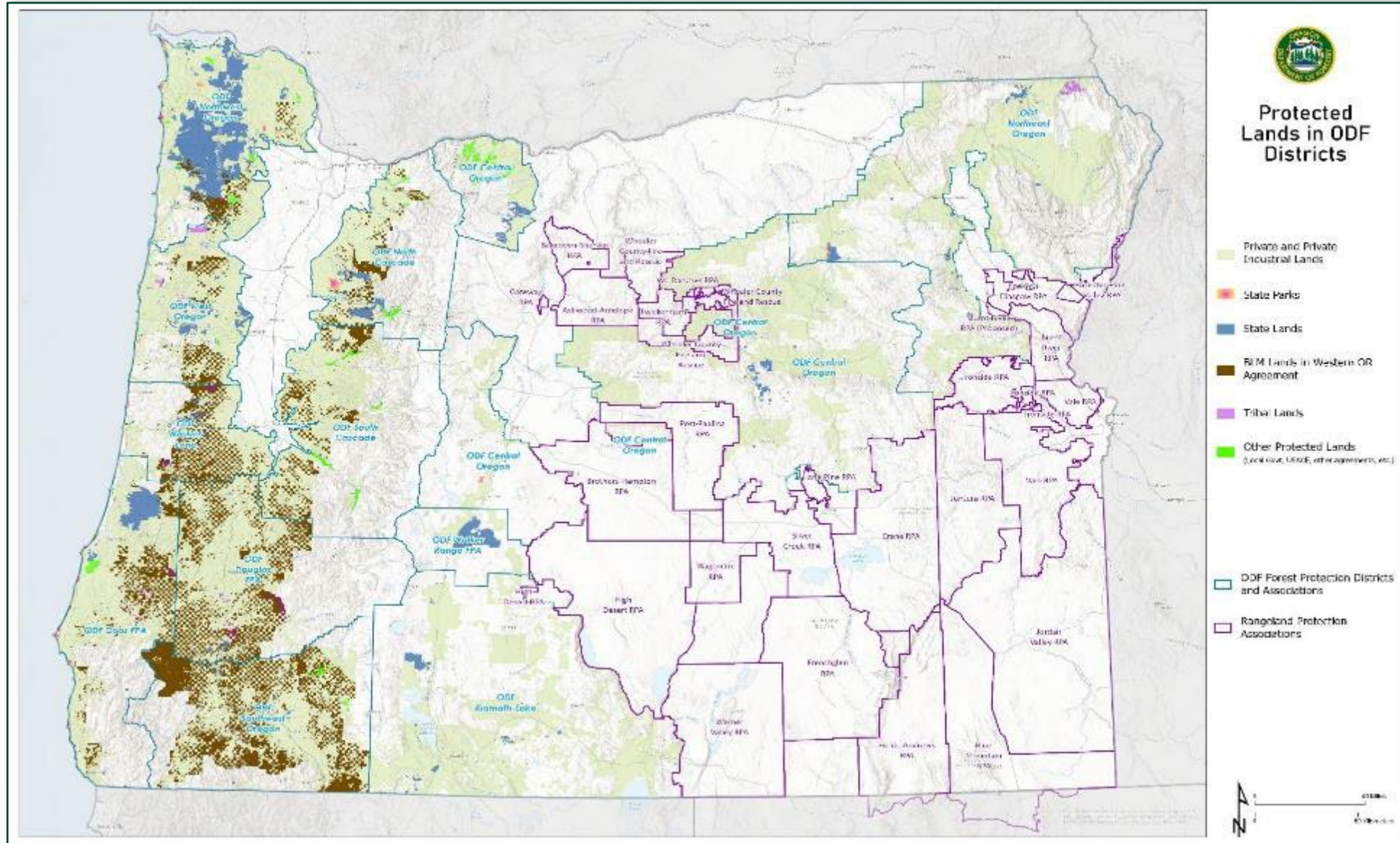
Questions?

Fire Protection Division

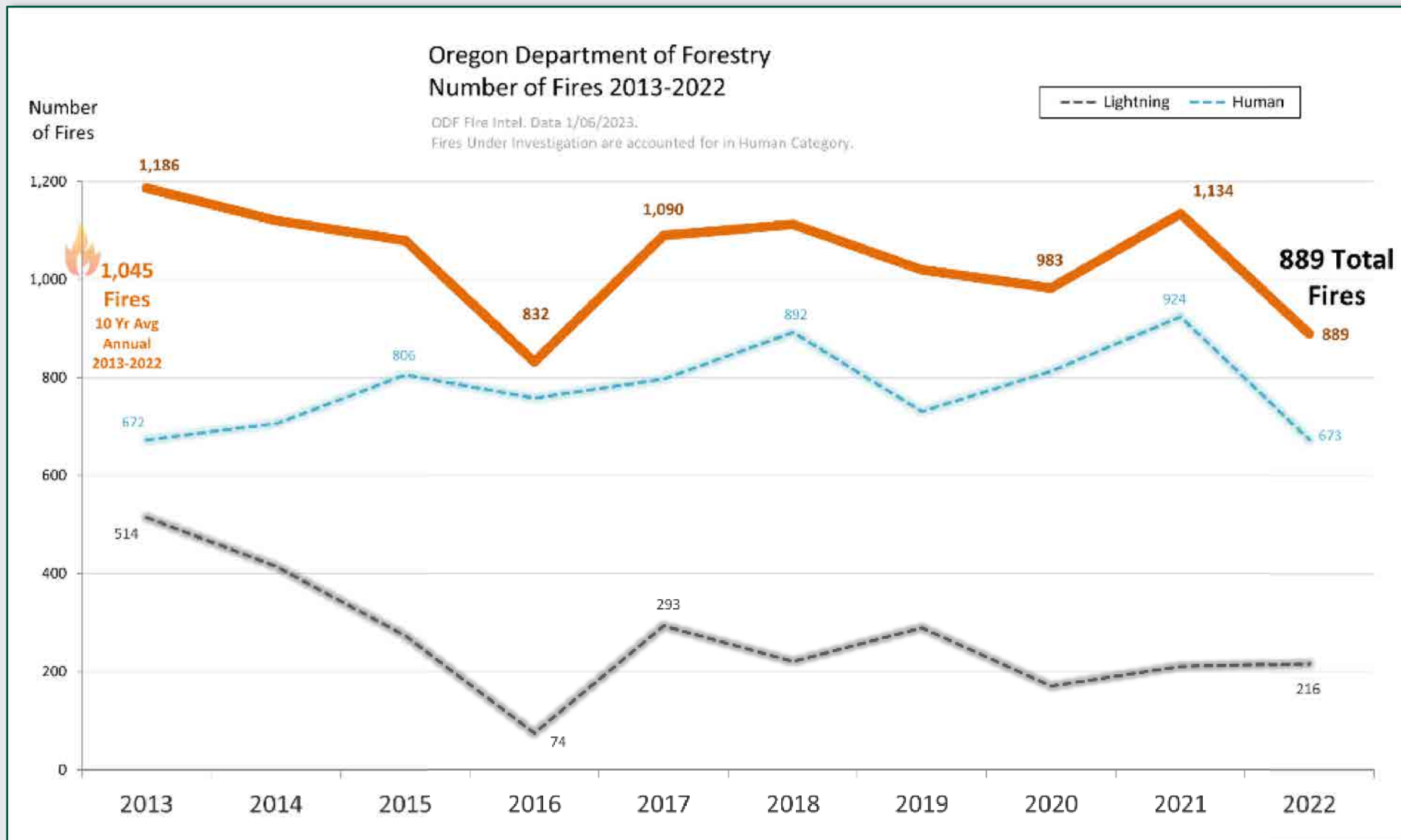




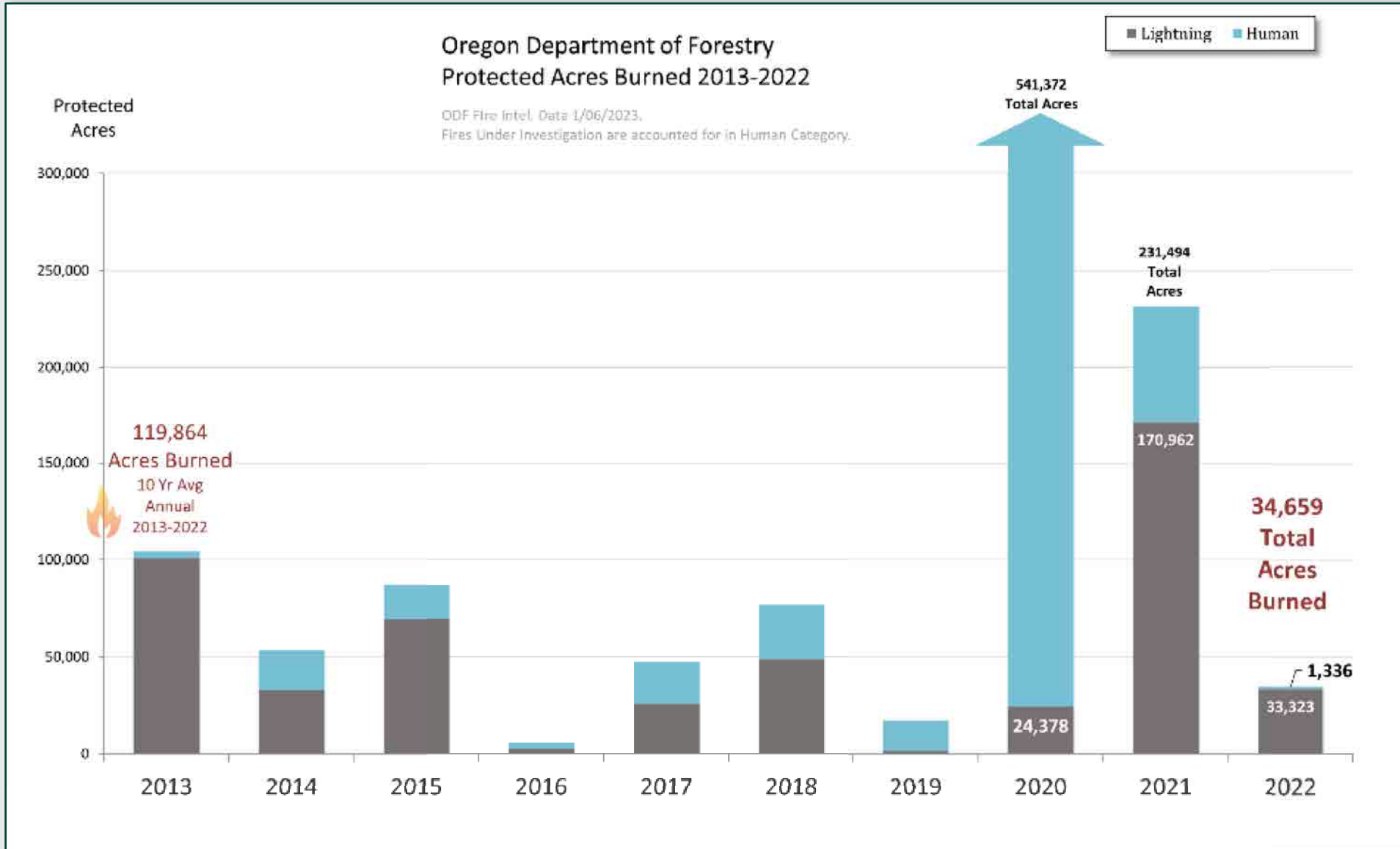
Fire Protection in Oregon



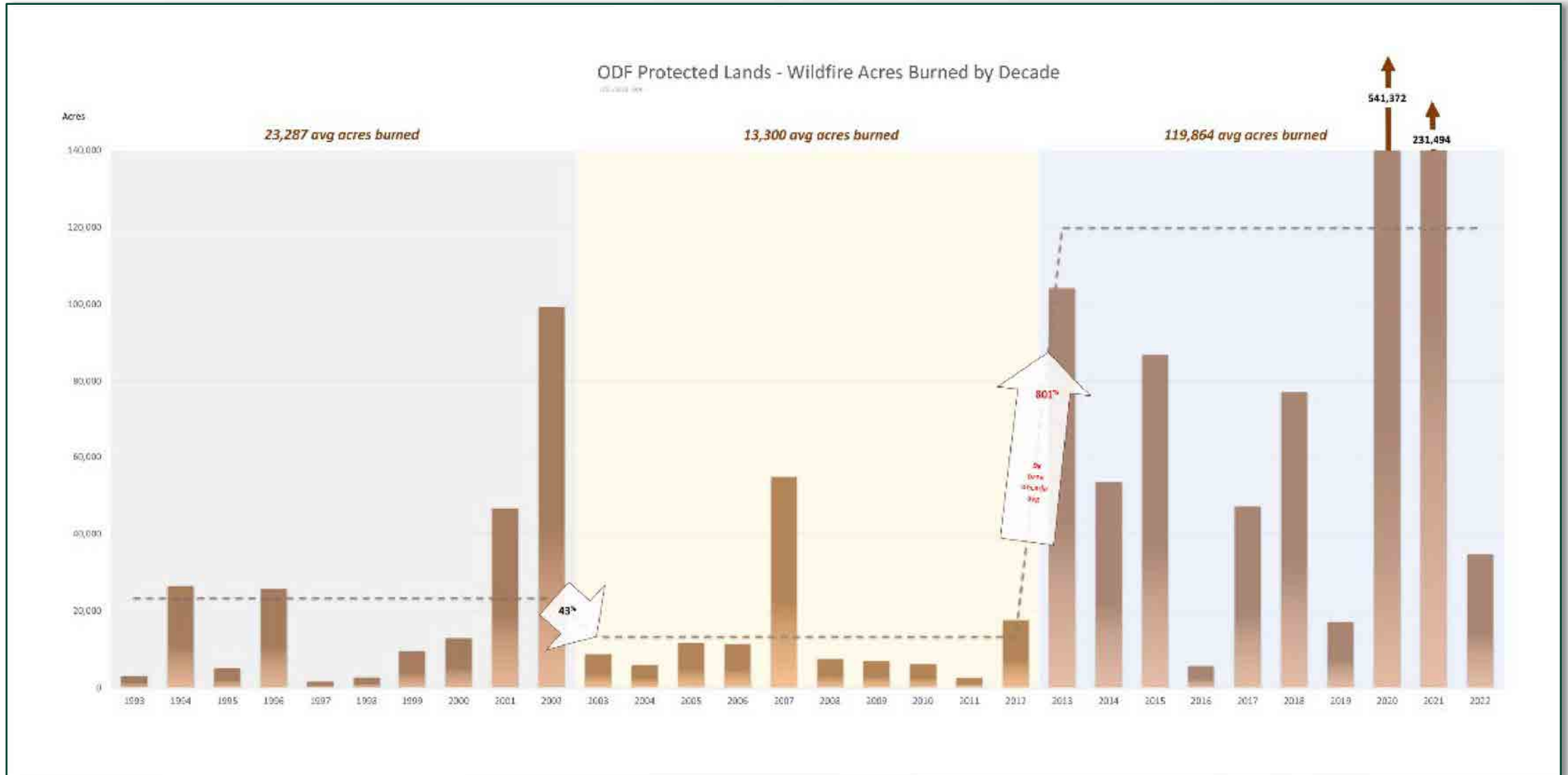
Number of Fires – ODF Protection



Acres Burned – ODF Protection

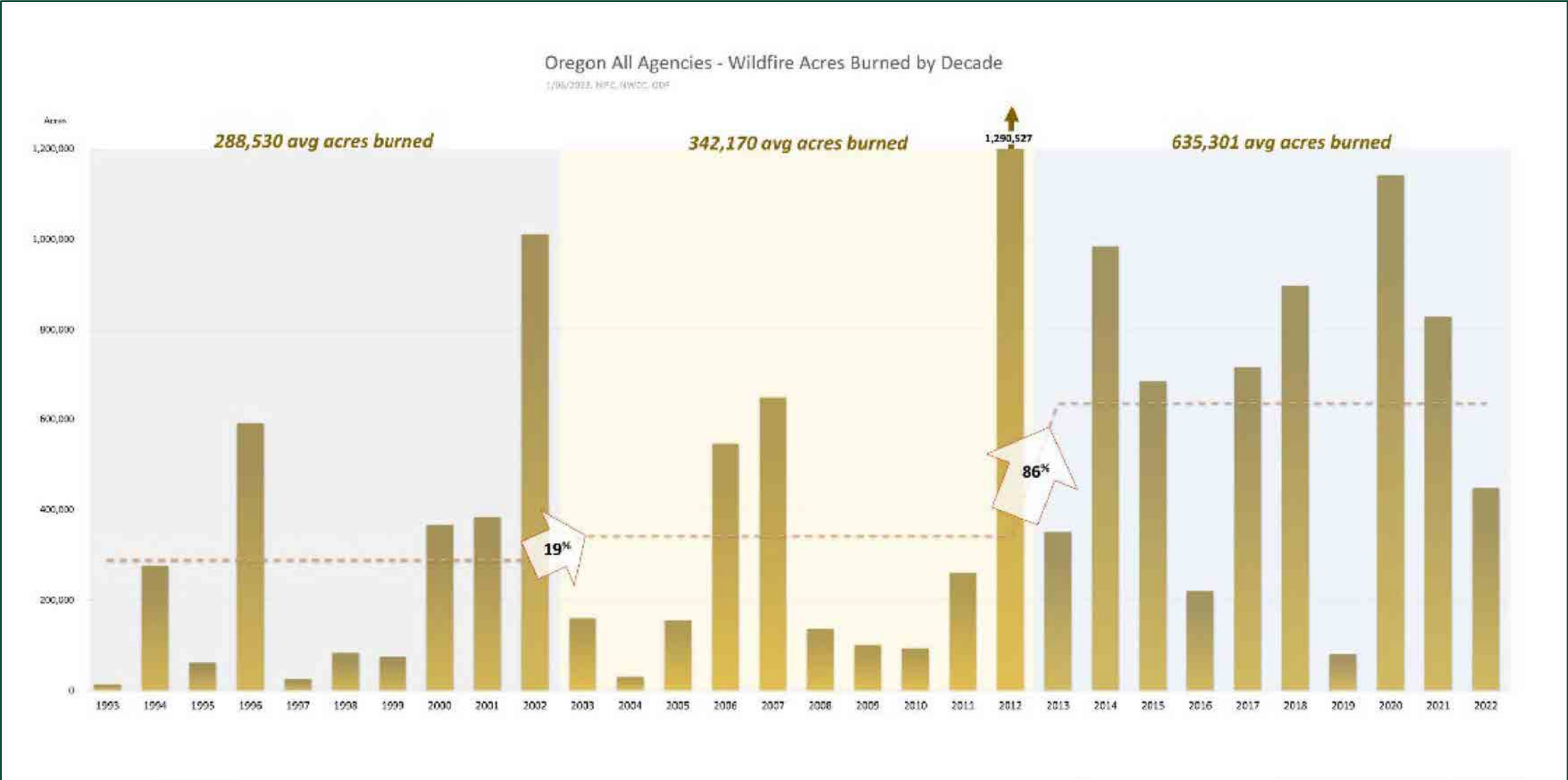


Acres Burned: ODF Protection



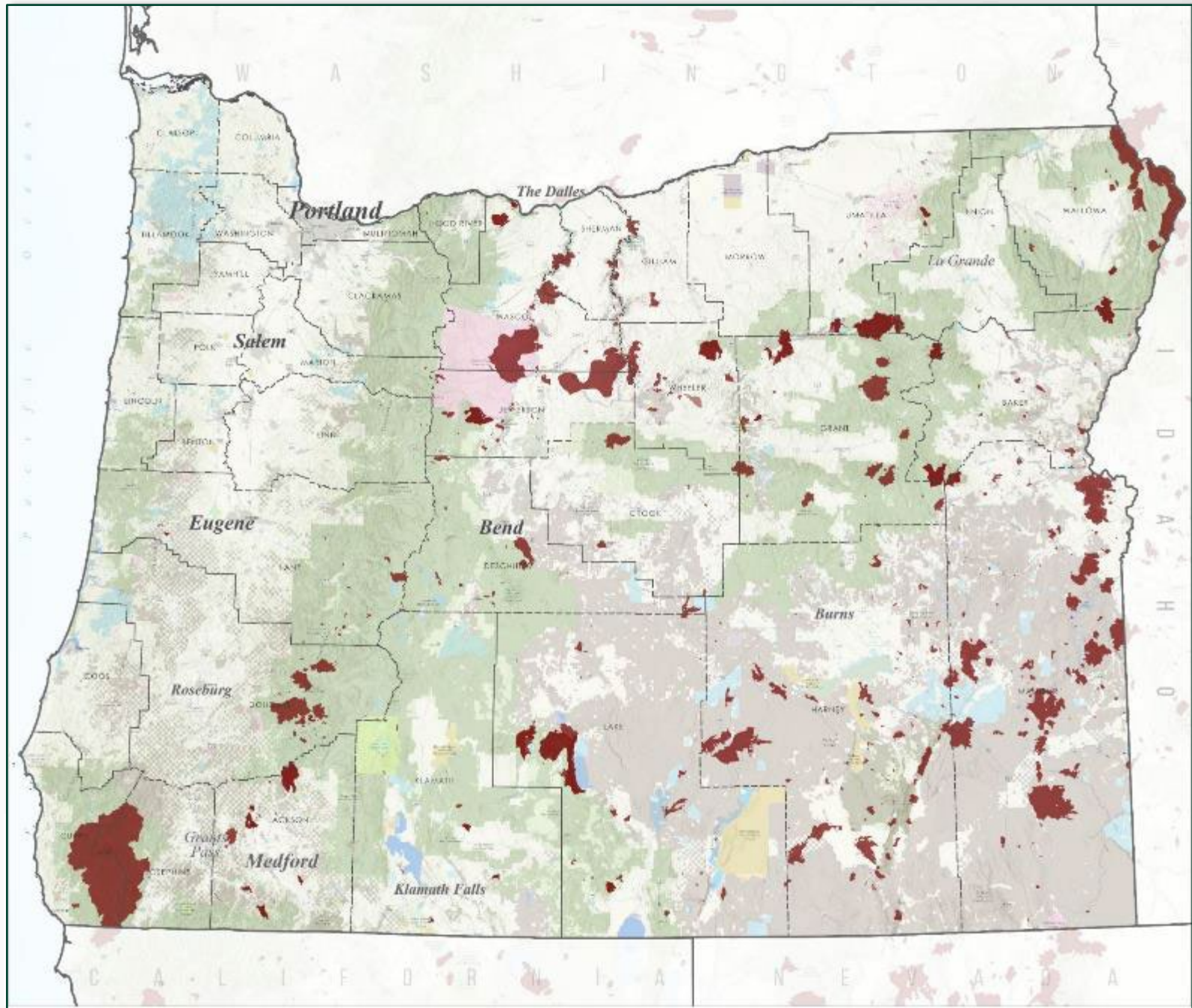


Acres Burned: All Jurisdictions



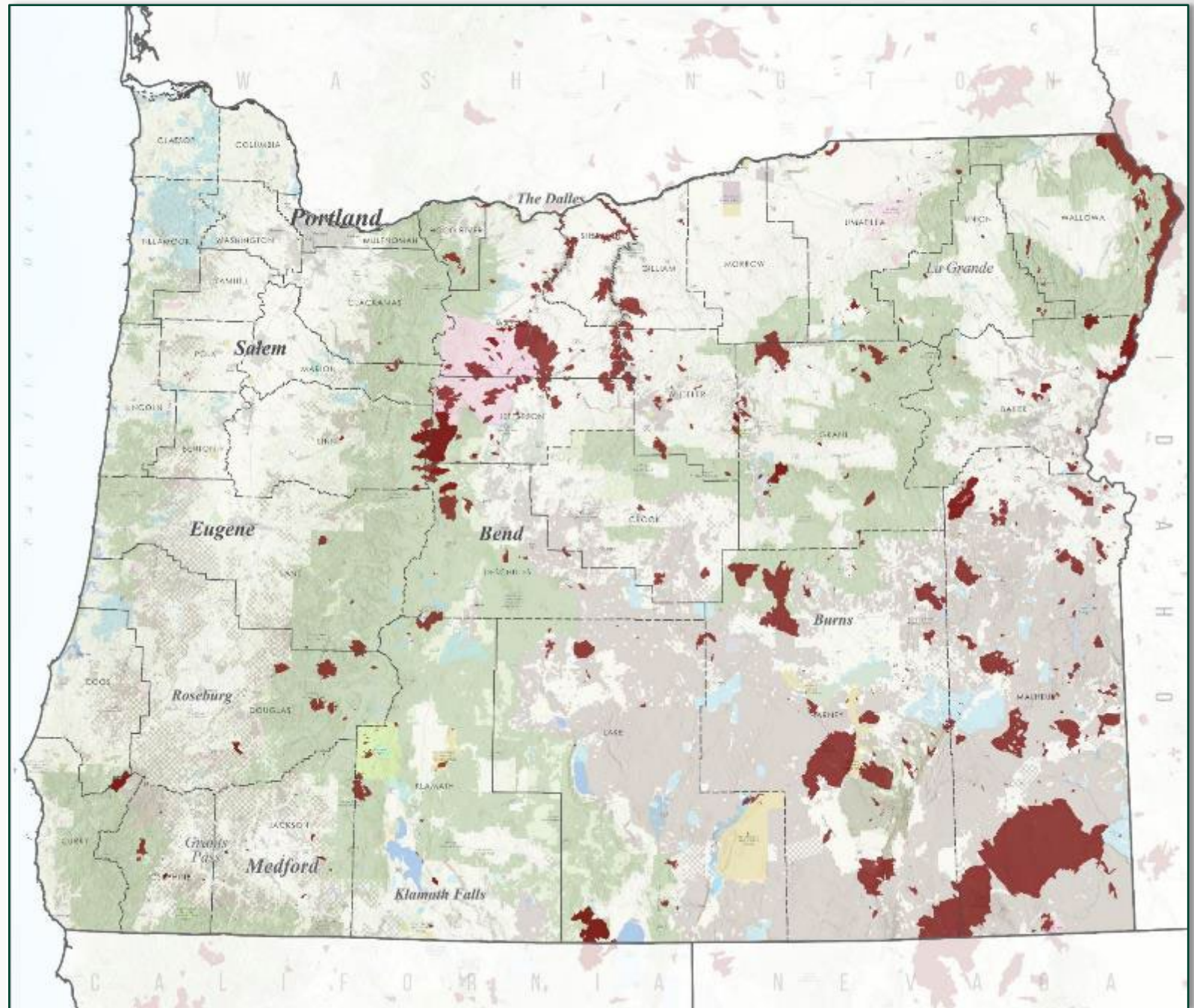
Historical Large Fires in Oregon

1993 - 2002



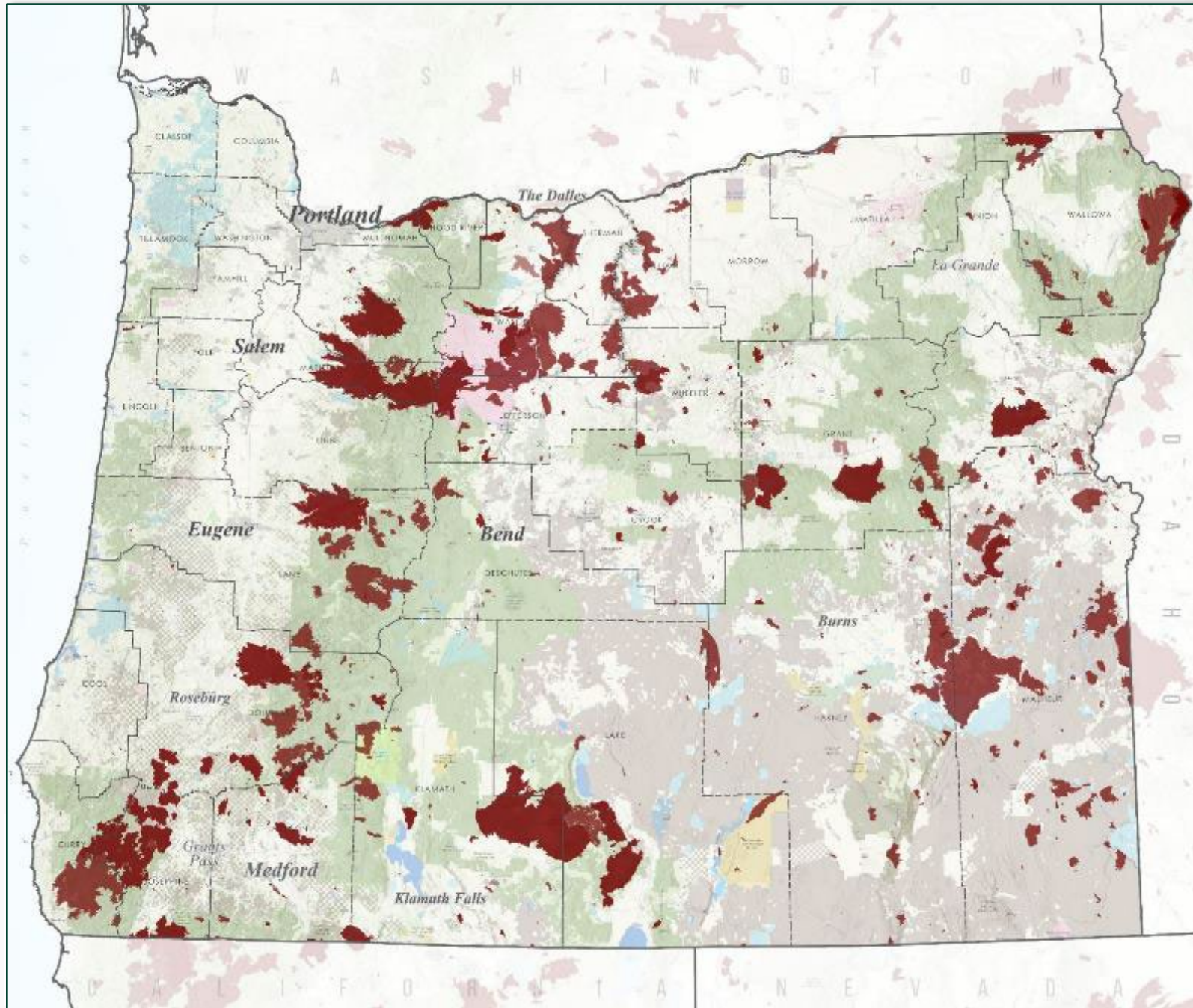
Historical Large Fires in Oregon

2003 - 2012



Historical Large Fires in Oregon

2013 - 2022

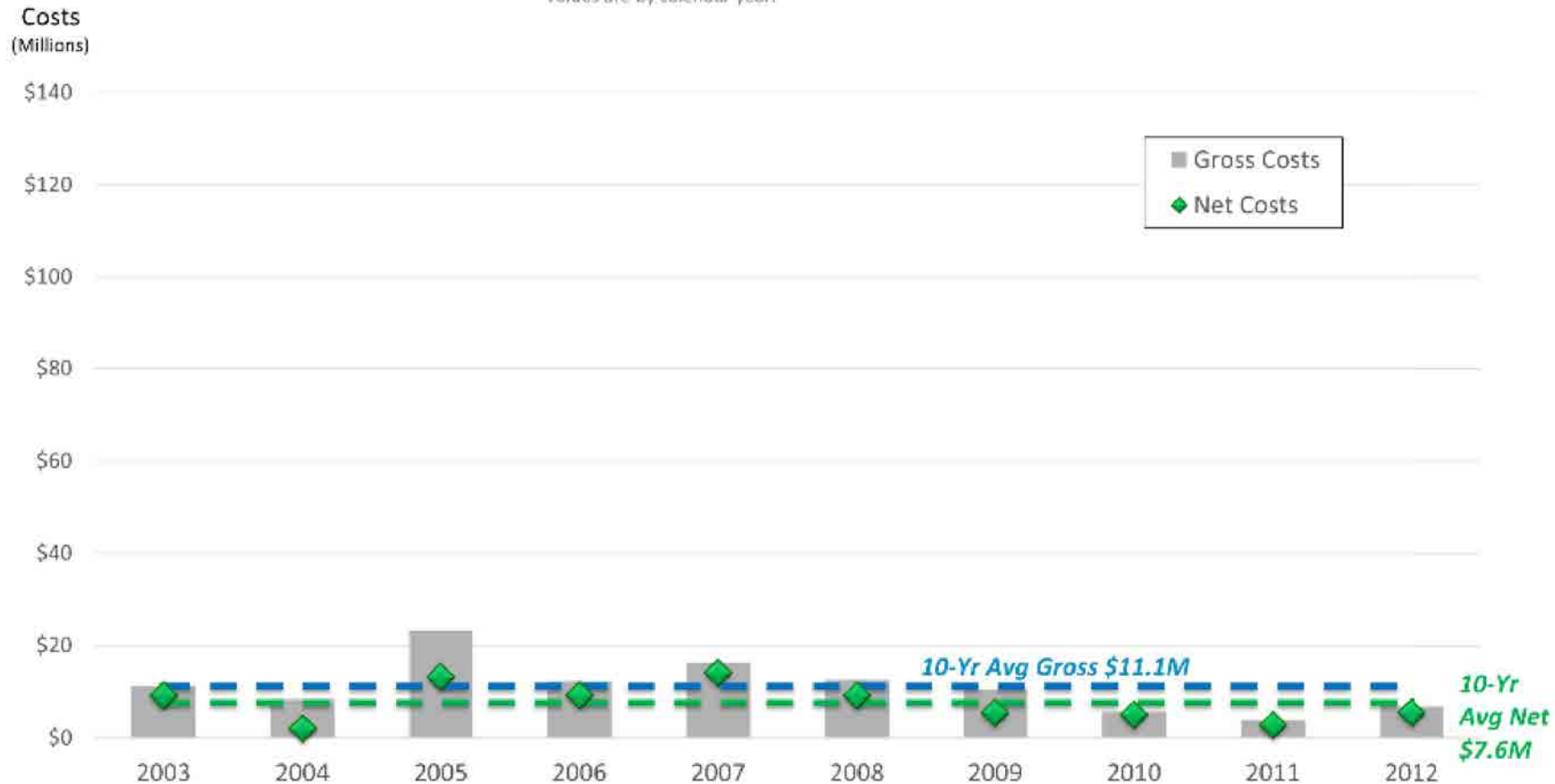


ODF Emergency Fire Costs



ODF Emergency Fire Costs 2003 - 2012

ODF Protection Finance and EFCC Data 1/09/2023.
Values are by calendar year.



2003-2012

ODF Emergency Fire Costs



ODF Emergency Fire Costs 2013 - 2022

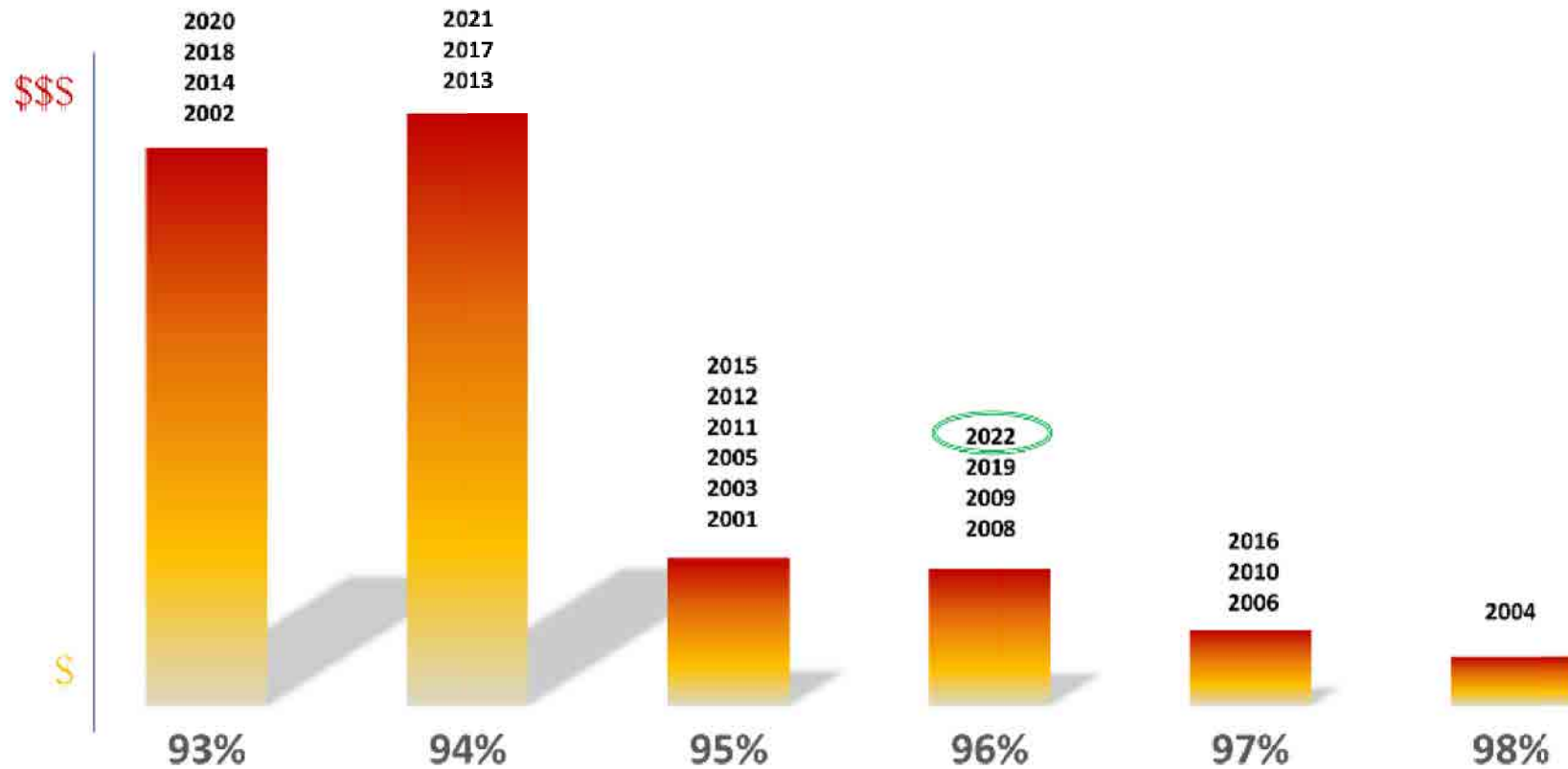
ODF Protection Finance and EFCC Data 10/27/2022.
Values are by calendar year including non-jurisdictional fires for 2013-2021.



*includes draft claims figures

2013-2022

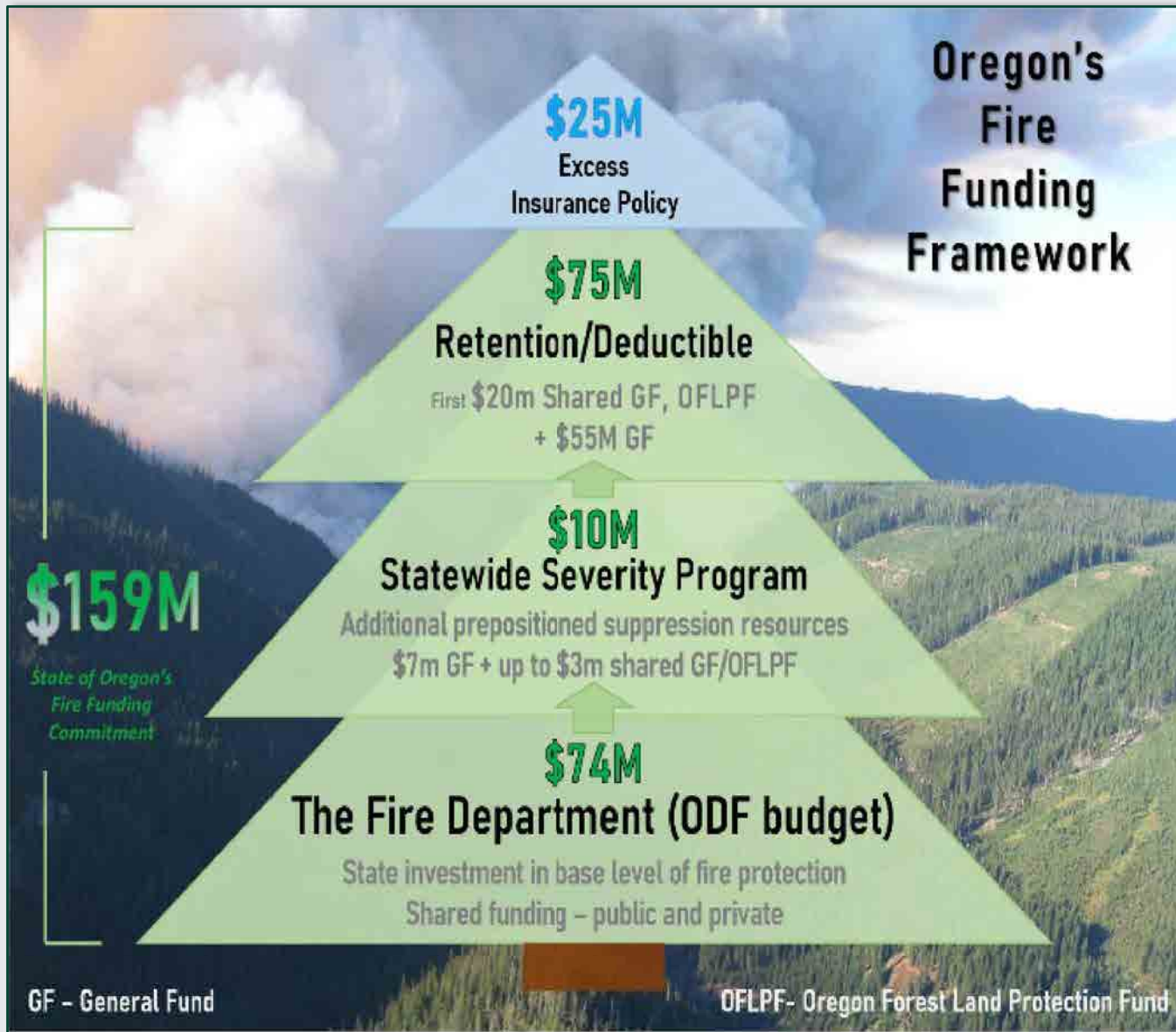
Small fires, big savings



ODF Fires 10/27/2022, Protection Finance and EFCC data 10/27/2022.
Showing Average of Gross Costs for Years at Each Performance Level (%).

KPM #11 –
Fire suppression
effectiveness

Funding for Wildfires



Preventing Fires

KPM #12 – Prevention of Human-caused Wildfires



ODOT SIGNAGE



KEEP OREGON GREEN BILLBOARD



FIRE DANGER LEVEL SIGNAGE



Reducing Risk

KPM #6 – Air Quality Protection (smoke intrusions from prescribed burns)



PRESCRIBED BURN



BURN PILE



Protecting Forests & Communities





Questions?

Forest Resources Division



Forest Resources Division

- Enforcing and administering the Oregon Forest Practices Act (FPA)
- Forest health and monitoring
- Adaptive management and training
- Small Forestland Owner's Office – family forestland assistance
- Urban and community forestry
- J. E. Schroeder Seed Orchard
- Oregon Seed Bank
- All lands initiatives
- Federal forest restoration program





Forest Practices Act

Division's role

- Education
- Technical advice
- Inspections
- Enforcement
- Adaptive management

Key Performance Measures

- #3 FPA compliance
- #7 Private forestlands managed under a certified management plan
- #8 Forest stream water quality



Private Forest Accord

- Updated rules
- Small Forestland Owner Office
- Adaptive Management Program
- Habitat Conservation Plan development
- Training & outreach



Forest Health

- **28 Million** Acres Surveyed Annually
- **Goal:** Healthy, Resilient Forests
- Focus on:
 - » Insects
 - » Diseases
 - » Invasive Plants



KPM #13—Damage to Oregon forests from insects, disease, and other agents.





Family Forestland Assistance

- **60,000** family-owned, managed forests
- What we do
 - » Information & technical help
 - » Grants
 - » Small forestland owner office



Urban & Community Forestry

241 cities, local governments, and community organizations served

KPM #4 Urban and community forest management



SALEM CAMPUS PEACE TREE CEREMONY



COMMUNITY EVENT





Seed Orchard & Seed Bank

J.E. Schroeder Seed Orchard

- Breed seeds with highly desirable ecological traits
 - » Growth potential
 - » Wood quality
 - » Disease tolerance

Oregon Seed Bank

- Provides tree seed for family forestland owners



All-Lands Initiative





Federal Forest Restoration Program (FFR)

What we do

- Accelerate pace and scale of federal forest restoration

Outcomes

- Fuels reduction
- Commercial restoration
- State investments leveraging federal and other funds





Questions?

State Forests Division





State Forests

Managed for greatest permanent value for all Oregonians:

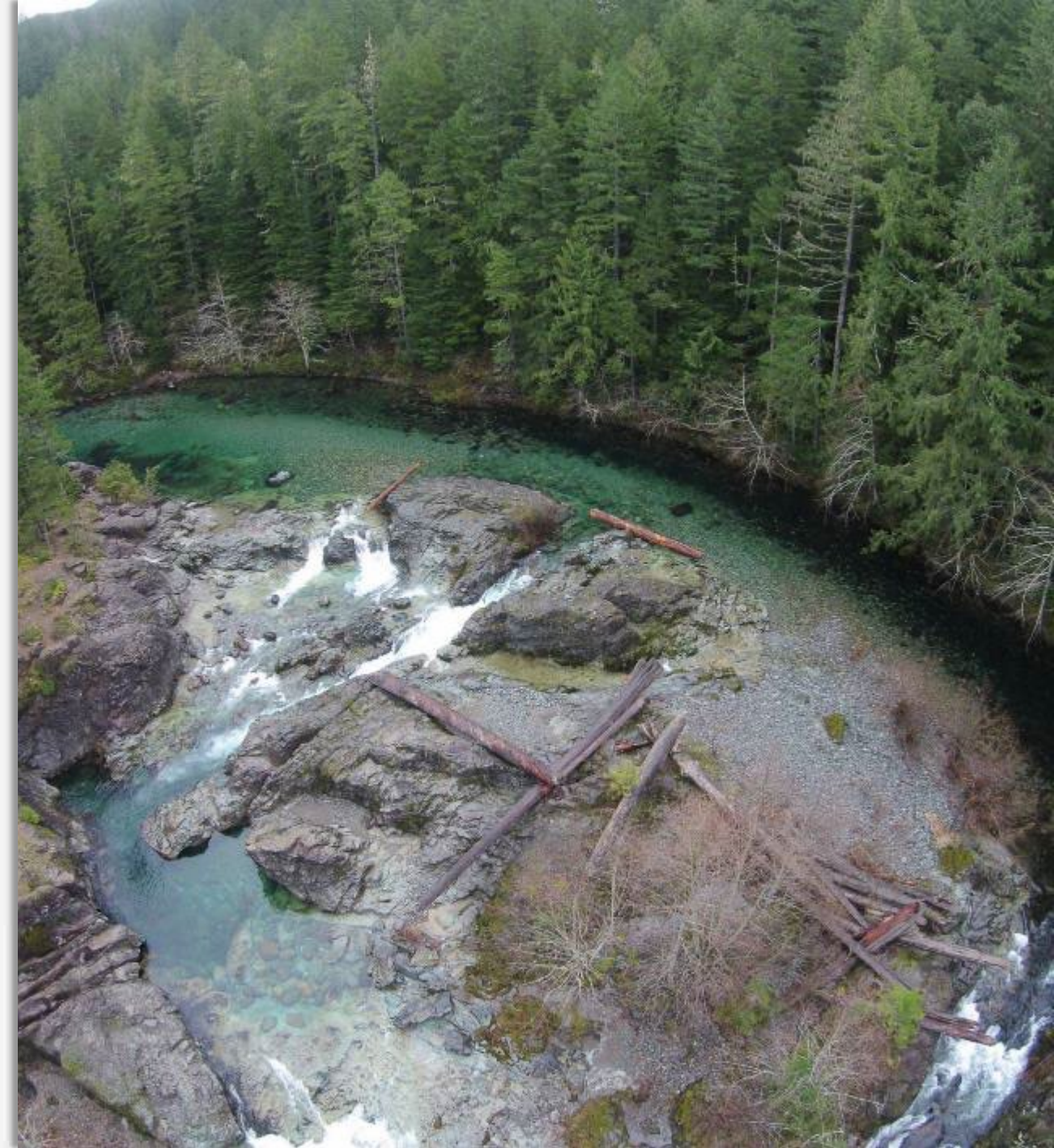
- Social
- Economic
- Environmental





Lands

- Board of Forestry Lands - **730,000 Acres**
 - » Clatsop
 - » Tillamook
 - » Santiam
 - » Gilchrist
 - » Sun Pass
 - » Small Scattered Parcels
- Common School Forest Lands - **33,000 acres**



Funding

Almost all revenue derived from timber harvest

- 63.75% to counties and local taxing districts to provide local services
- Remaining 36.25% to ODF for state forests management, including:
 - » Timber sale planning and implementation
 - » Reforestation
 - » Survey and protection of threatened and endangered species
 - » Education programs
 - » Trails & recreation facilities
 - » Research and monitoring
 - » Litigation expenses
 - » Wildfire protection



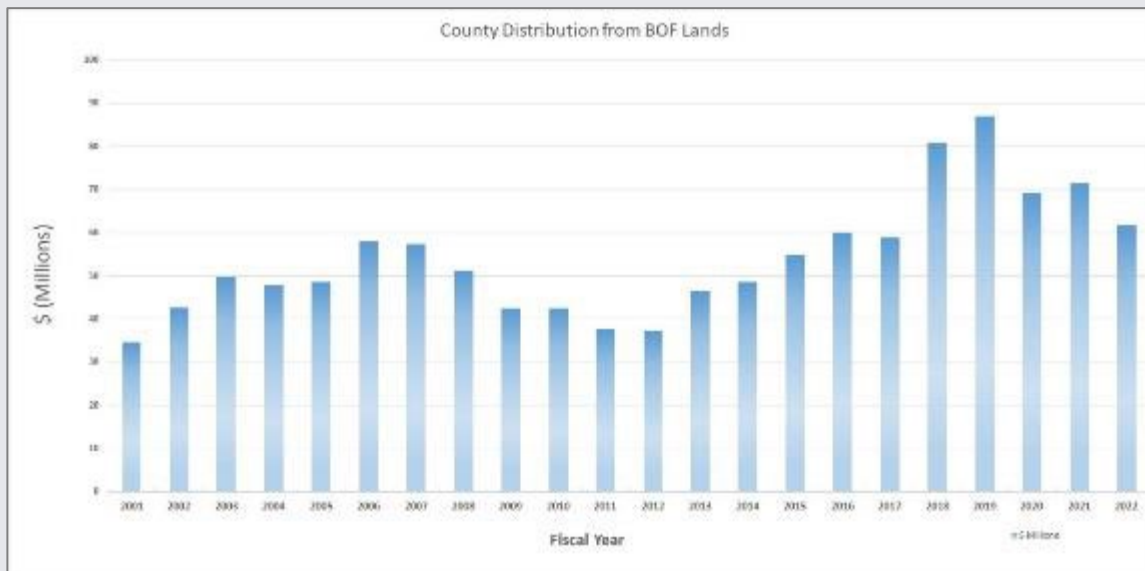
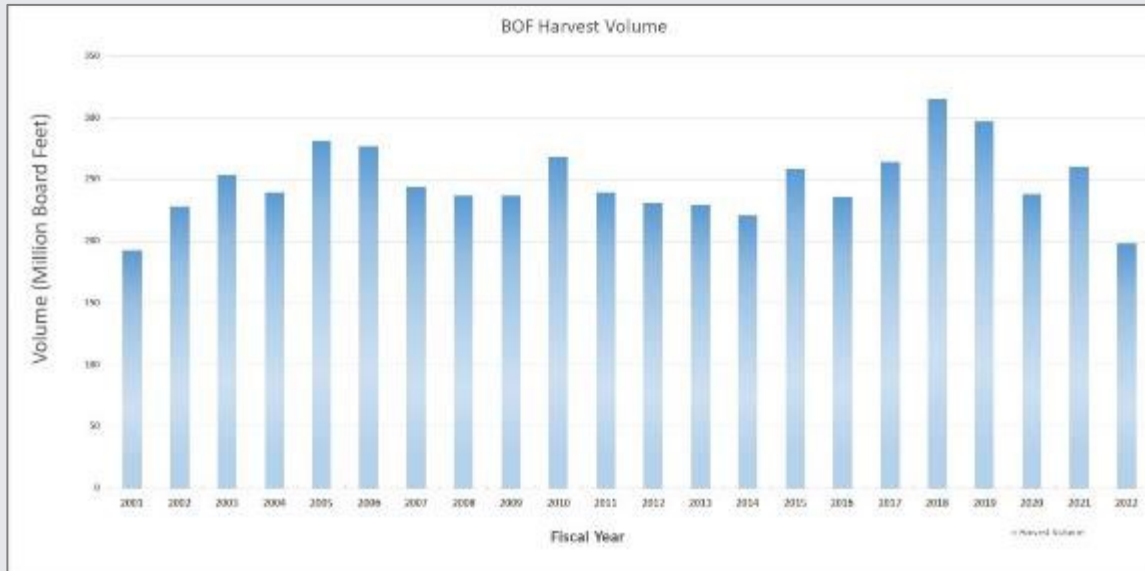


Social Benefits



- Recreation, Education & Interpretation
 - » Trails – Hiking, Horseback riding, ATVs
 - » Campgrounds
 - » Tillamook Forest Center
- Jobs
 - » Forest sector
 - » Recreation & tourism
- Tribal
- South Fork Camp

Economic Benefits



AVERAGE TIMBER HARVEST

5-Year: 262 MMBF
10-Year: 252 MMBF

AVERAGE REVENUE TO COUNTIES

5-Year: \$74.1 Million
10-Year: \$63.9 Million

AVERAGE REVENUE TO ODF

5-Year: \$42.1 Million
10-Year: \$36.3 Million



Environmental Benefits

RESILIENT FORESTS

- Protection from fire
- Protecting Oregon's wildlife
- Treating insects and disease
- Providing:
 - » Clean air
 - » Drinking water
 - » High-quality habitat for native fish and wildlife
- KPM #10 – State forests North Coast habitat





Challenges

- Forest health
- Funding structure
 - » Reliance on timber revenues to achieve greatest permanent value





Addressing Challenges

- Internal fiscal budgeting process
- Business process improvements
- Policy revisions
 - » Habitat conservation & forest management plans
- Adaptable workforce
 - » Keeping workforce aligned with workloads and workflows





Questions?

Planning Branch



Planning Branch

Development and maintenance of internal and external relationships to support proactive management of agency affairs





Planning Branch

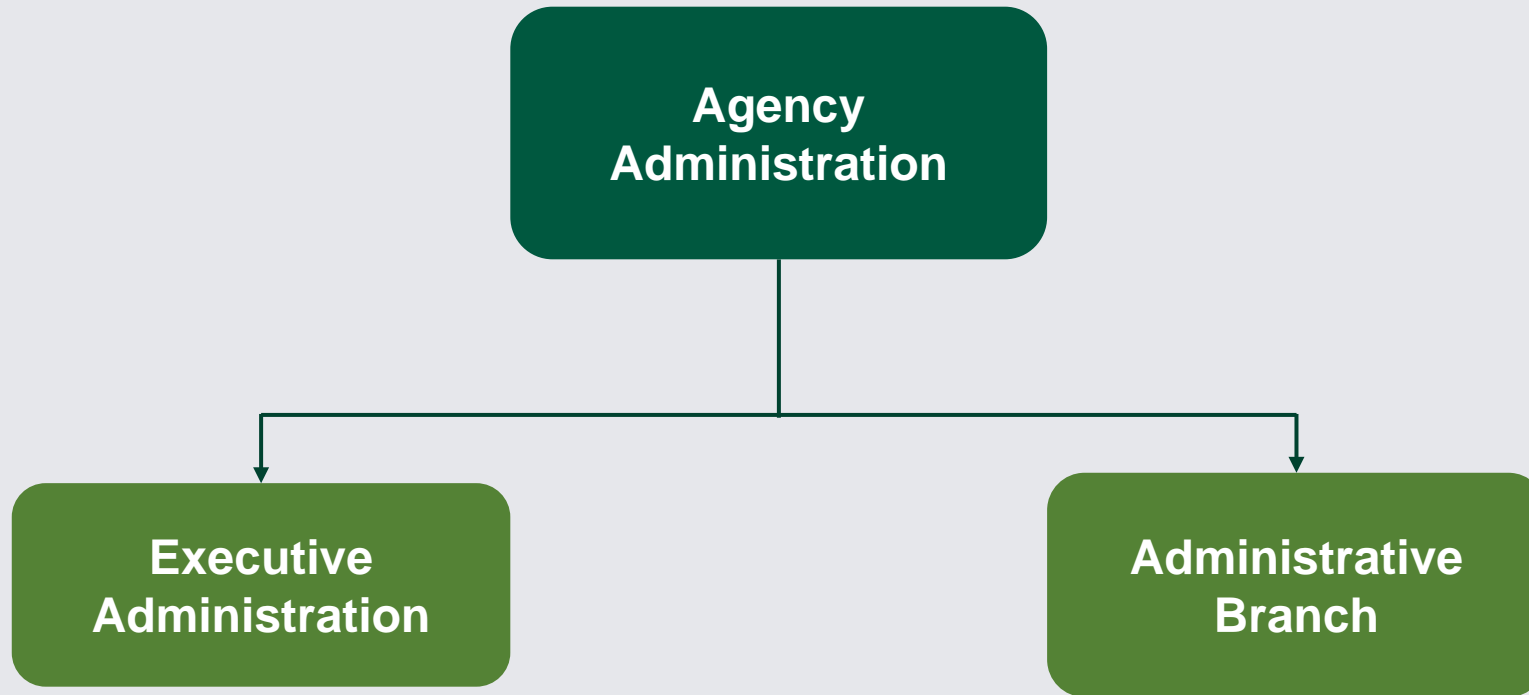
- Decision Support
- Analysis
- Strategic Planning
 - » Climate Change & Carbon Plan
 - » Forestry Program for Oregon
 - » 20-year strategy & Shared Stewardship
- Resource Planning
- Partnerships



Questions?

Agency Administration







Executive Administration

- Agency Executive Leadership
- Executive and Leadership Team Support





Administrative Branch

- Business Services
- Information Technology
- Human Resources
- Public Affairs
- Motor Pool
- Admin Modernization



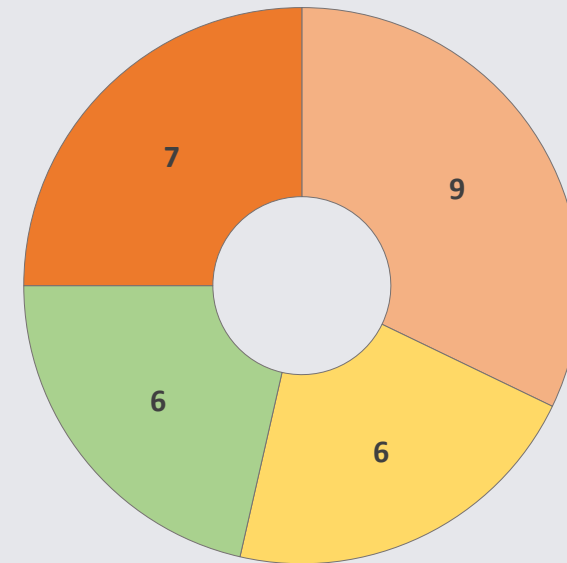
Resources

Administrative support and expertise needs continue to increase, both internally and externally.

- Diversity, equity, inclusion, environmental justice
- Employee support and engagement
- Public interest in agency's work
- Facilities maintenance, rebuilding
- Fire season staffing and support

MGO Recommendations

- Implementation of 28 financial policy and process updates continues
- MGO performing assessments of ODF's progress
- ODF & MGO regularly presenting updates to the Board of Forestry



Implemented

Substantially completed

In progress

Not under review



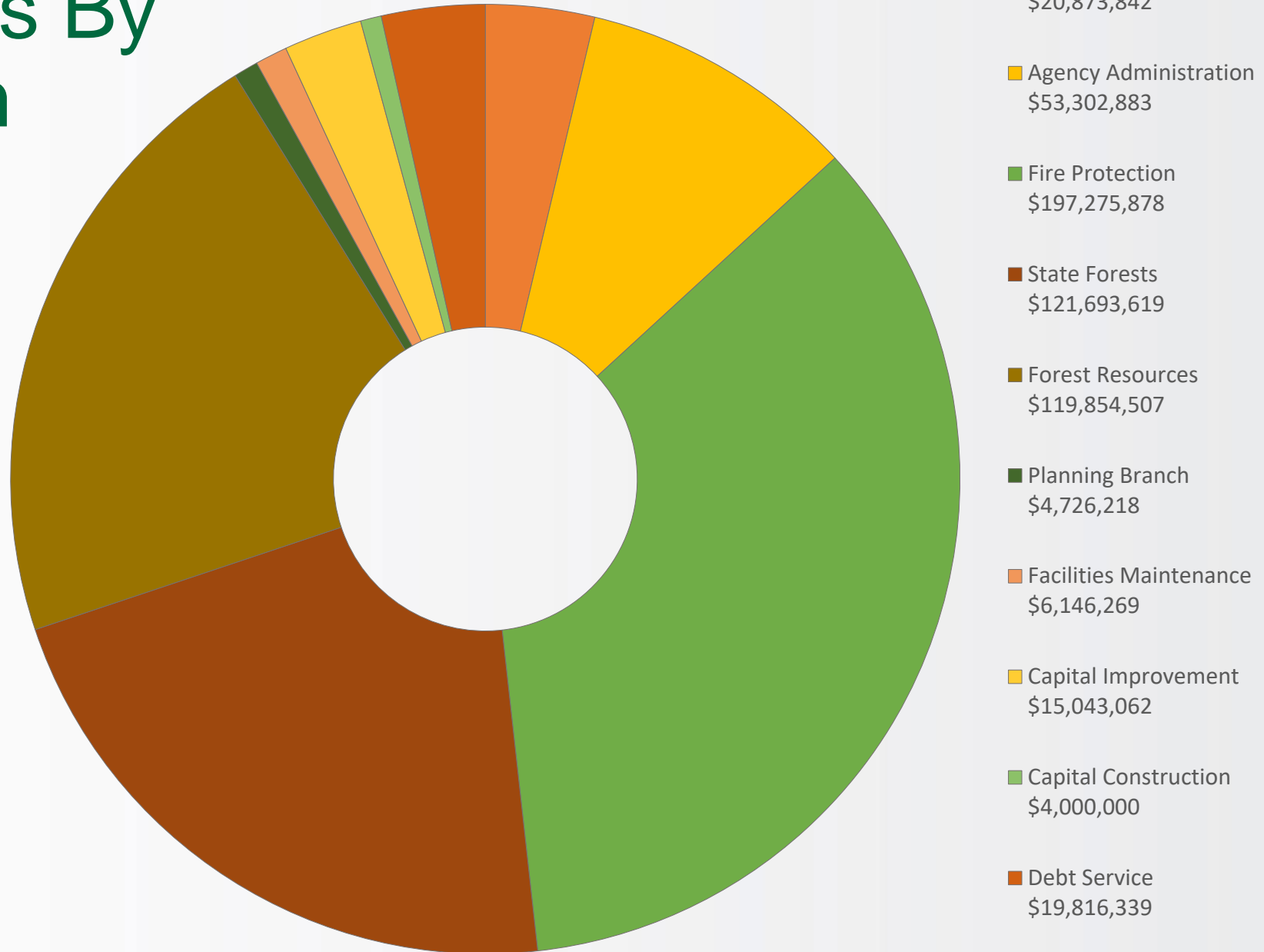


Questions?

Governor's Budget

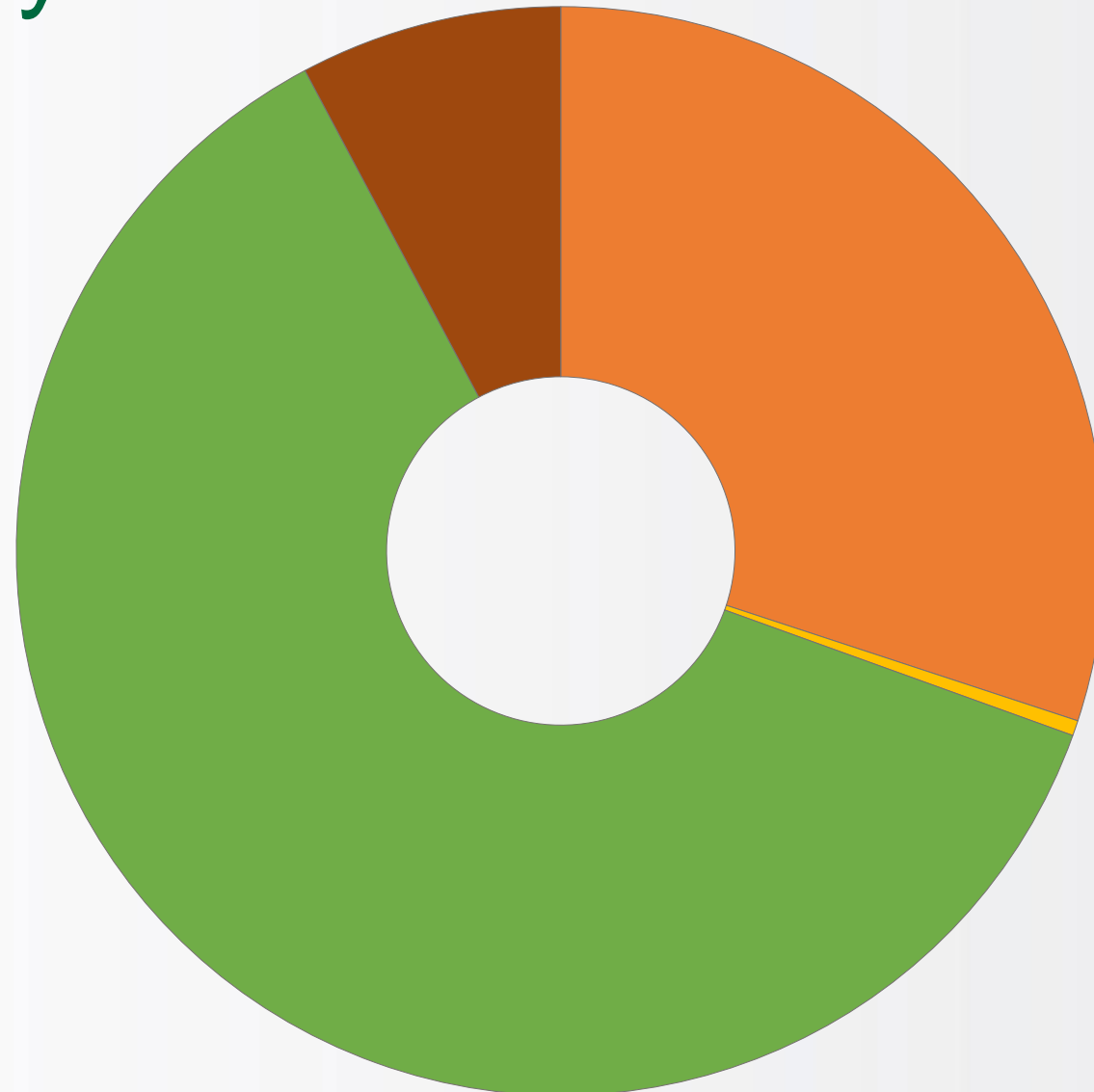


All Funds By Program Area



All Funds By Fund Type

\$562,732,617

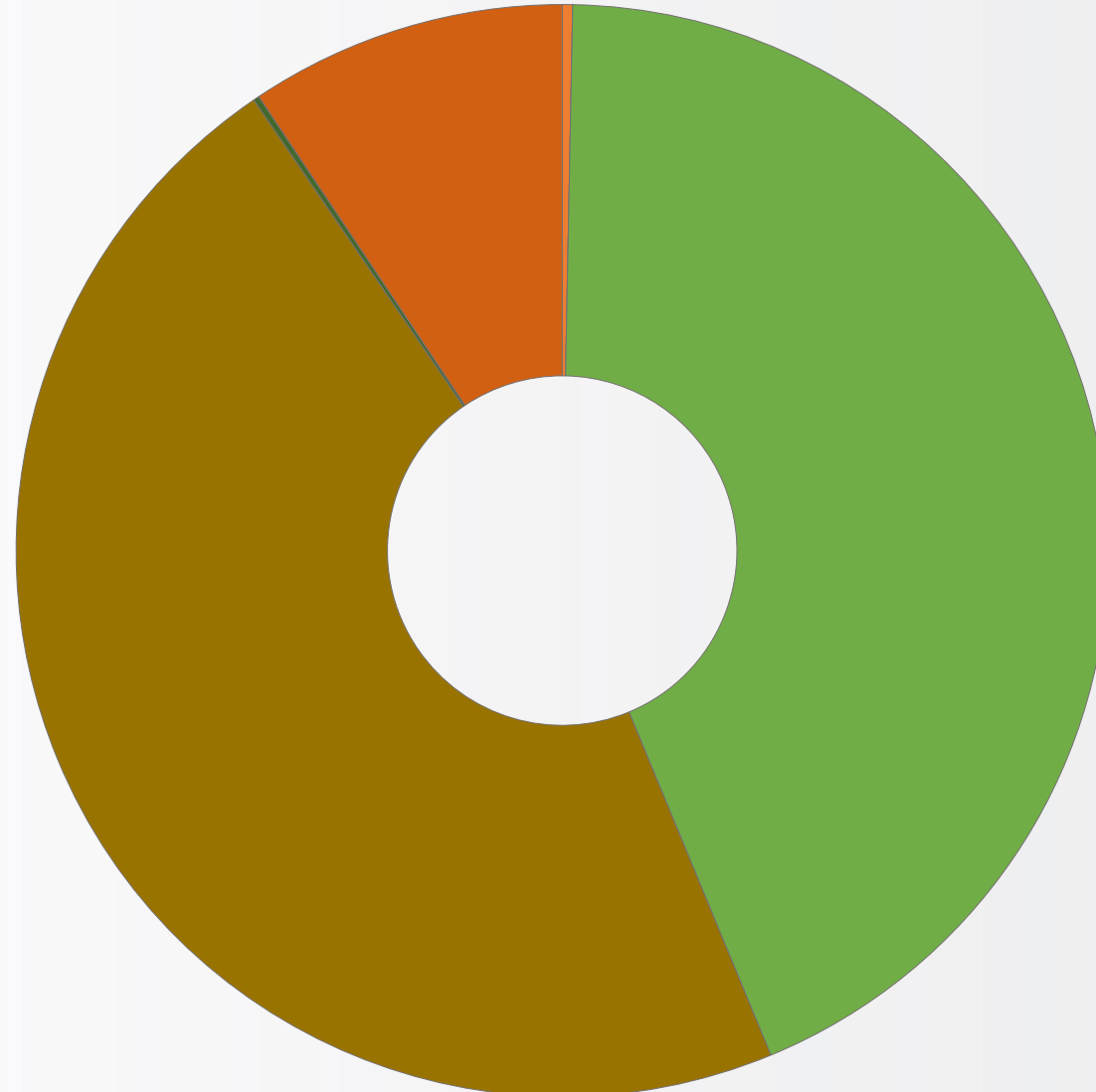


- General Fund
\$169,120,333
- Lottery Funds
\$2,557,080
- Other Funds
\$347,242,173
- Federal Funds
\$43,813,031



General Fund By Program

\$169,120,333



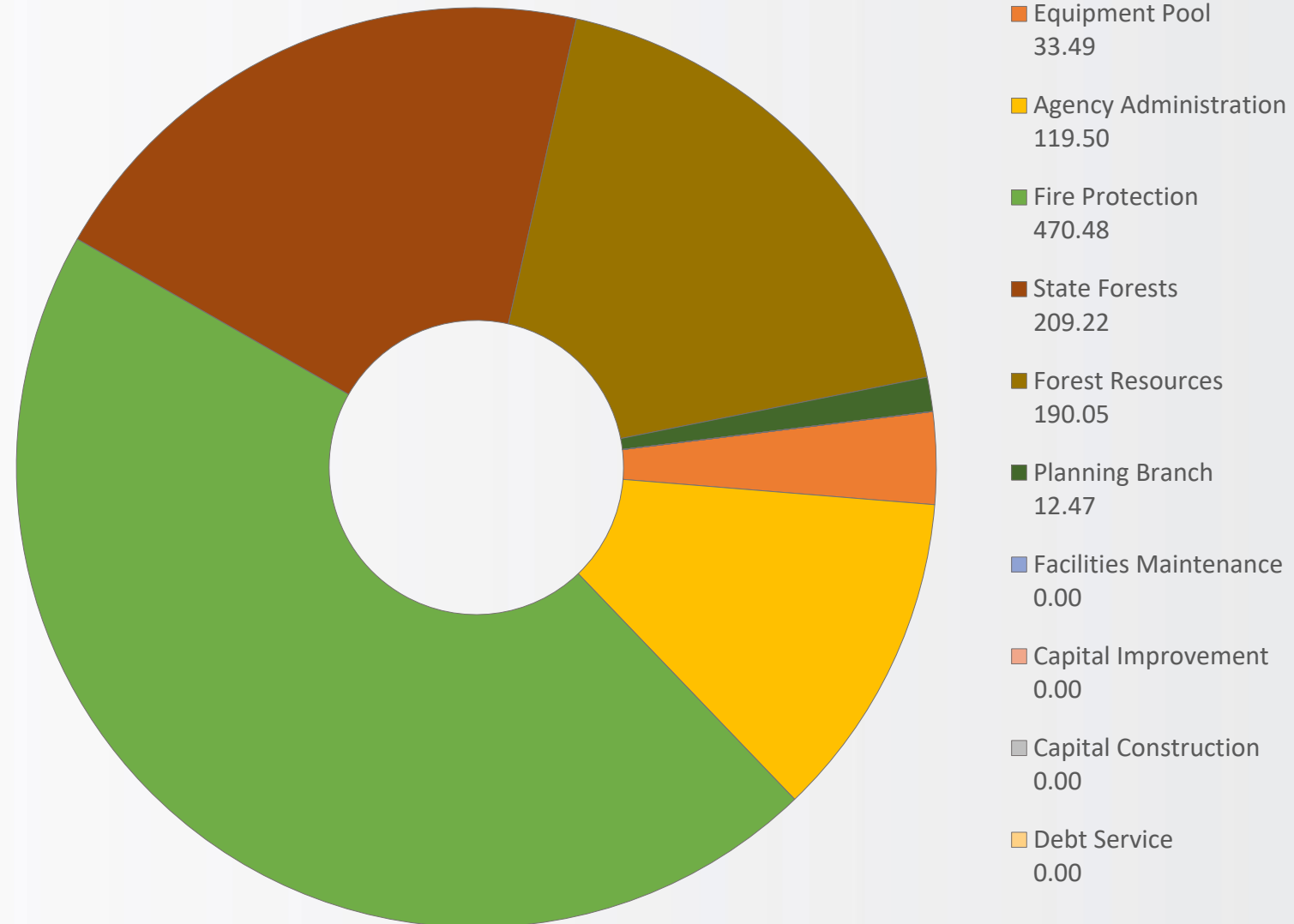
- Equipment Pool
\$522,583
- Agency Administration
\$0
- Fire Protection
\$73,484,227
- State Forests
\$0
- Forest Resources
\$78,958,052
- Planning Branch
\$302,387
- Facilities Maintenance
\$0
- Capital Improvement
\$0
- Capital Construction
\$0
- Debt Service
\$15,853,084





FTE By Program

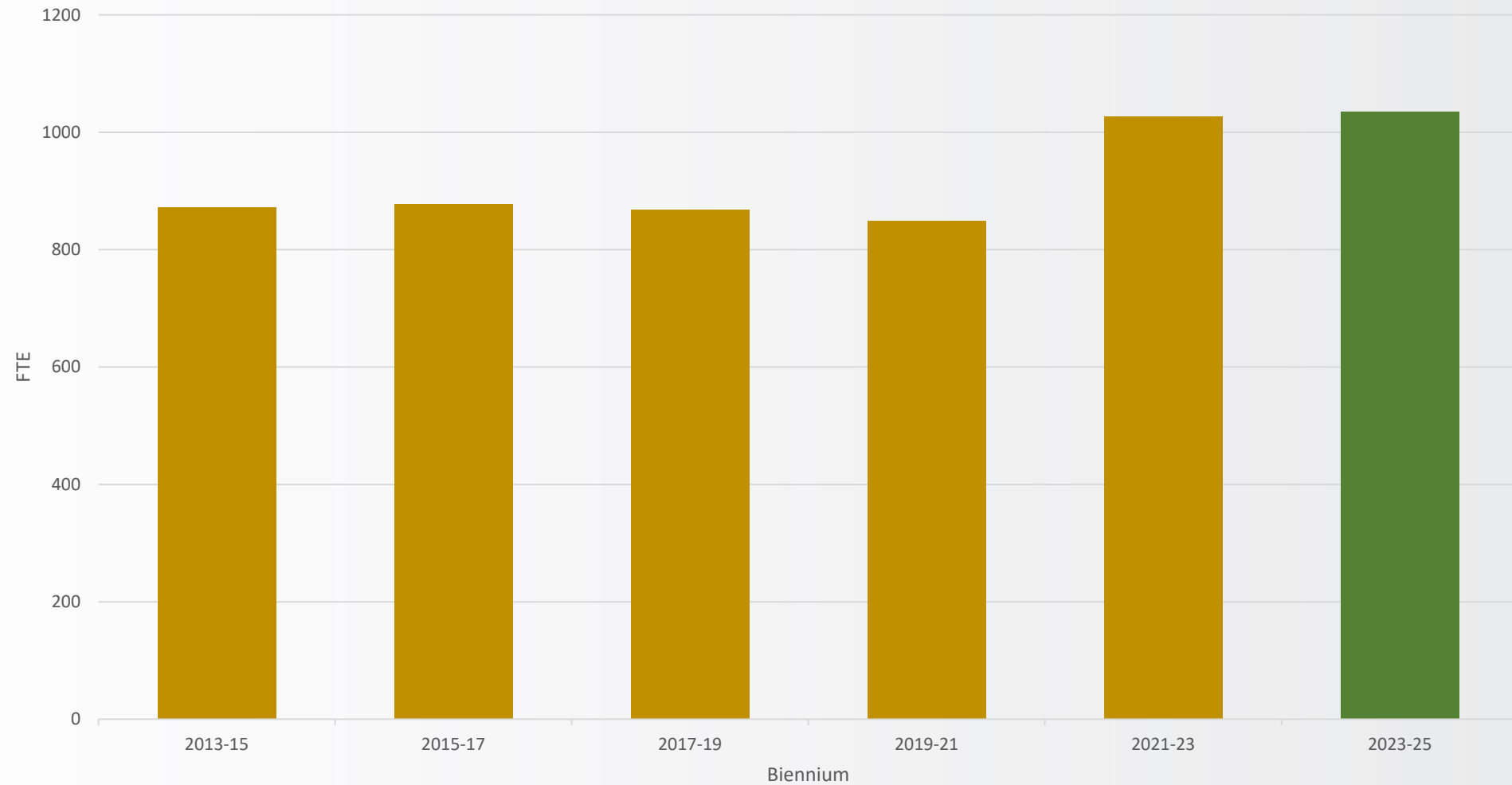
1,035.21 FTE



FTE over time



2009-2023 Legislatively Approved FTE
& 2023-25 Governor's Budget FTE





Governor's Budget: POPs

ODF Policy Option Packages	
106	Private Forest Accord Development <i>Provides GF to support establishment of the Small Forestland Owner Investment in Stream Habitat and Adaptive Management programs required under the PFA and SB 1501 (2022).</i>
110	Fire Severity Resources & Insurance <i>Establishes a Special Purpose Appropriation in the Emergency Board Fund to provide critical supplemental firefighting resources that are positioned where and when fire danger is the highest.</i>
114	Capital Construction: Klamath Facility Replacement <i>Provides Other Funds limitation to enable the department to use insurance proceeds and other revenue sources to rebuild the facility lost to fire in ODF's Klamath-Lake District.</i>
115	Capital Construction: Santiam Facility Replacement <i>Provides Other Funds limitation to enable the department to use insurance proceeds and other revenue sources to rebuild the facility lost to fire in ODF's Santiam Unit.</i>

Governor's Budget: GF Reductions

- Four Administrative Branch positions
- \$7.87 million from the landscape resiliency grant program
- \$1.97 million from the small forestland grant program





Questions?

THANK YOU!